



PHILLIP ISLAND & SAN REMO

ADVERTISER

YOUR COMMUNITY VOICE!

Thursday, June 12, 2025

\$2.00 Incl. GST



DAL finally released, Newhaven to expand

Newhaven's town boundary is expanding to Samuel Amess Drive, under the State Government's Distinctive Areas and Landscapes (DAL) process. The boundaries of other Phillip Island towns and estates will mostly remain as is, with the DAL effectively halting residential land development across the island.

PLANNING

Town boundaries across Phillip Island will not be expanded, except at Newhaven, according to the final chapter in the State Government's long-awaited Distinctive Areas and Landscapes (DAL) process.

And as already reported, San Remo's town boundary has now officially been expanded to allow housing development through to Punch Bowl Road.

The Bass Coast DAL process first started in 2019, as a 50-year plan to guide future land use.

It included two months of planning panel hearings in 2023 – which considered 750 submissions – with residents ever since patiently waiting the final details.

Following the final DAL release last week by Planning Min-

ister Sonya Kilkenny, many will be celebrating an effective halt to residential land development across the island, which means there will be growth inside towns, including increasing heights.

Ventnor, Cape Woolamai and Smiths Beach now have their current town boundaries locked in, despite intense lobbying by developers for expansions.

Although a low-density residential area to the west of Sunset Strip is now included in that town boundary, allowing residential infill and effectively merging Smiths Beach and Sunset Strip.

Newhaven

The biggest surprise is at Newhaven, where the town boundary is expanding to Samuel Amess Drive.



The biggest change to emerge from last week's announcement is that Newhaven's town boundary is expanding to Samuel Amess Drive. This boundary was proposed in the Bass Coast Planning Scheme, but is a considerable extension from what the DAL proposed in 2022.

This boundary was proposed in the Bass Coast Planning Scheme as future residen-

tial land, but only subject to a detailed coastal vulnerability hazard assessment, because the

land is deemed of environmental significance.

The new Newhaven boundary – which will ultimately be locked into law following this announcement – is a considerable extension from what the DAL proposed in 2022, to end roughly around Boys Home Road.

The Newhaven West land fronts Churchill Island, adjoins a marine national park, and is part of the internationally-recognised Western Port RAMSAR wetland, while a DAL ecological study states this area could be home to threatened species.








The final boundary has given a nod to these environmental issues, excluding the land immediately fronting the water to protect outviews from Churchill Island.

Continued page 8

SOUTH COAST FLOORING XTRA
A FABULOUS FLOORING EXPERIENCE
155 Thompson Avenue, Cowes 03 5952 1488

COWES SELF STORAGE
COWES BOAT CARAVAN RV STORAGE
24 hr Video Surveillance
FULLY SECURED - FULL SURVEILLANCE
Ray White Phillip Island
41 Thompson Avenue, Cowes
5952 2799

SOUTH COAST TAXIS
1300 687 222
13cabs Book with 13cabs app
Download on the App Store

PHILLIP ISLAND 7 DAY WEATHER FORECAST	Thu/Jun12	Fri/Jun13	Sat/Jun14	Sun/Jun15	Mon/Jun16	Tue/Jun17	Wed/Jun18
							
	MOSTLY SUNNY 9 13	SHOWER OR TWO 8 13	PARTLY CLOUDY 7 13	SHOWER OR TWO 10 13	SHOWER OR TWO 11 14	SHOWER OR TWO 11 13	SHOWER OR TWO 11 13



In the first nine days of June, 31.8mm fell on Phillip Island, with the highest total recorded by the Rhyll weather station on Monday June 9 of 19.2mm.

Welcome rain after dry autumn

CLIMATE

Farmers and gardeners across the island have welcomed a wet start to winter.

In the first nine days of June, 31.8mm fell, with the highest total of 19.2mm recorded by the Rhyll weather station on Monday June 9.

Rainfall so far in June makes it our wettest month since February, with the rainfall already

eclipsing the total rainfall for May (27.4mm), April (13.8) and March (28.4mm).

According to Bureau of Meteorology statistics, the mean rainfall for June (at the Rhyll station) is 66.8mm, so there's a lot more rain needed to deliver average rainfall for the month.

After the driest autumn on Phillip Island on record, many are hoping for a long wet winter.



The Circular Economy Summit in Cowes last week was organised by Bass Coast Shire Council's Meg Humphrys and Peter Maganov.

It's easy being green: summit

Almost 100 people from across Victoria attended a circular economy summit in Cowes last Thursday, World Environment Day.

Speakers discussed how the community is moving to a sustainable future.

Organisers of the summit, which was held at Berninnet, were Bass Coast Shire Council's environmental strategy coordinator Meg Humphrys and environmental programs coordinator Peter Maganov.

POLICE BRIEFS

Hoon's car impounded

On May 29, local police impounded a Holden Commodore after reports of two vehicles doing burnouts at a tourist attraction facility at Summerlands.

One car was still in the carpark when police arrived, driven by a 23-year-old male from Carrum Downs.

Police said the car was not roadworthy, including rear tyres worn down to the wire. The driver was taken to Cowes police station where police allege he returned a breath test result of 0.136.

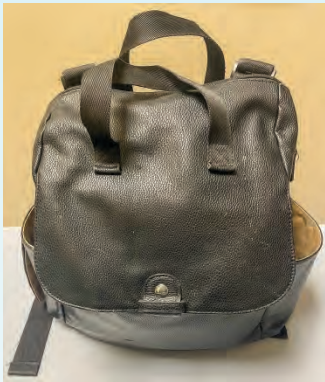
The man's licence was immediately suspended and the car impounded for 30 days, at a cost of \$1275. The man will appear in Korumburra Magistrates Court later this year on charges including driving over the limit (0.05), improper use of a vehicle, careless driving and an unroadworthy vehicle.

The driver of the second vehicle (a 22-year-old also from Carrum Downs) was later spoken to by police. He refused to nominate who was driving the car, and has been charged to appear in court at a later date.

Bag it

San Remo police are looking for the owners of a bag (pictured) found at a park in Marine Parade on May 12.

If it is yours, or you know the owner, please contact San Remo Police Station on 03 5678 5500 or email san-remo.uni@police.vic.gov.au



PHILLIP ISLAND & SAN REMO

ADVERTISER

CONTACT US:

Editorial: advertiser@pisra.com.au
Advertising: ads@pisra.com.au
Sport: sport@pisra.com.au
Classifieds: ads@pisra.com.au

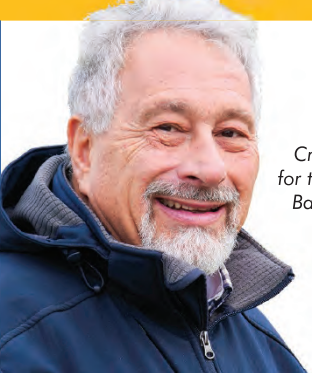
Suite 2, 60 Chapel Street, Cowes, 3922.
Phone (03) 5952 3201
Fax (03) 5952 3024

Publication No. VBF 9005897
Registered by Australia Post.

Subscribe online
www.pisra.com.au

Don't hesitate to contact me, I am here to help.



Cr Ronnie Bauer
for the Island Ward,
Bass Coast Shire

PO Box 996 Cowes 3922
Tel: 0439 535 282
email: Ron.Bauer@basscoast.vic.gov.au
Authorised by Ronnie Bauer, PO Box 996, Cowes 3922

Winter Pruning Specialists

Reliable Garden

Limited spaces now available for winter rose & fruit tree pruning.

- Professionally Trained Staff
- Fully Insured
- Servicing Phillip Island & San Remo since 2007



0418 598125 www.reliablegarden.com.au



COASTAL

REFRIGERATION & AIR-CONDITIONING

Refrigerant Trade Auth No: AU 51426 - PI 48651

- Service Agent for Daikin
- Commercial & Domestic Refrigeration & Air Conditioning
- Licensed Split System Installer • Sales, Installation and Service

AH'S COMMERCIAL BREAKDOWN EXPERT AFTER SALES SERVICE

Rick North – Servicing Phillip Island & Surrounding Areas
Phone: **5678 5190** – Factory 1, 60 Genista St, San Remo

www.coastalrefrigandaircon.com.au



 [coastal_refrig_and_aircon](https://www.facebook.com/coastal_refrig_and_aircon)  Coastal Refrigeration & Airconditioning

Football club slams council

BUDGET

The Phillip Island Football Netball Club (PIFNC) has called for Bass Coast Shire Council's draft 2025/26 budget to be "thrown out and started again", after failing to fund urgently needed sports facilities.

PIFNC secretary Glenn Plymin gave an impassioned submission to councillors at the draft budget hearings this month, after it allocated just \$250,000 to the proposed future recreation reserve, on the corner of Ventnor and Phillip Island roads.

"The allocation of only \$250,000 to the much promised, never delivered Recreation Reserve was an insult to not only the PIFNC, other sporting clubs, and aquatic groups, but also island residents as a whole," Glenn said.

"The council budget was an absolute disgrace. It doesn't need tinkering with, it needs to be voted down, thrown out and started again."

As reported, in April councillors Tim O'Brien and Ronnie Bauer both voted against the budget, with Cr O'Brien receiving applause from the public gallery after saying he was "so disappointed and almost outraged" by the \$250,000 allocation.

Cr Bauer said the reserve was "the most important priority for us islanders" and said he would move a mini budget later in the year to progress the reserve, while Cr Tracey Bell said she understood if the community "feels a bit duped".

Glenn told councillors during the budget submissions the club was the largest in Gippsland "by a long way" and they had been hit with a "double whammy",



"The council budget was an absolute disgrace. It doesn't need tinkering with, it needs to be voted down, thrown out and started again," the Phillip Island Football Netball Club told council at a hearing on the draft budget, arguing the Cowes oval is overused and worn out (photo taken before 2025 turf restoration work).

with a failed new reserve in addition to dilapidated change rooms.

"Not only don't we have new grounds and facilities to use, which have been promised for four decades, but we also have rundown existing rooms, including holes in floors and no dedicated female changerooms, that the council will not invest in as the new reserve is 'coming'."

Glenn said the club had been told council grant money could not be used for maintenance, and so PIFNC has spent

cash to keep rooms useable, while they had applied unsuccessfully for further grants.

"There is no other public football ground available for training after March in winter on Phillip Island or San Remo," he said.

"If it wasn't for Newhaven College's fantastic assistance, we would have been without a ground to play on in the 2023 and 2024 seasons as the Cowes ground was fast becoming unplayable."

Glenn said the club was further disappointed council did not have the proposed recreation reserve on its government advocacy list.

"This is another slap in the face for PIFNC and other impacted groups and residents."

"The ongoing joke around PIFNC is that anyone over 60 won't be alive to see the new reserve in use."

Pool

Phillip Island Aquatic Centre Fund (PI-ACF) president Don Turner told the budget submissions hearing the long-awaited pool was "ignored" in the draft budget.

He told councillors aquatics had previously been a shire priority in both the advocacy strategy and the financial plan, which reflected community priorities.

But aquatics was now missing from all these policies.

"I'm not sure why it's not a priority," Don said.

"It's still a powerful need from the community."

"In the lead up to the 2024 council elections it was evident candidates saw aquatics as a community priority."

He said in the 2025 Federal election campaign pools were also a priority, with Liberal and Labour candidates promising funding, which he argued the shire should now leverage.

Don explained PIACF had just under \$100,000 in the bank, with Rotary and Bendigo Bank each promising a further \$25,000.

But this would not meet the required price tag of \$46 million for a Phillip Island pool.



If funding for new mountain bike infrastructure is provided in the budget, it will deliver a jump park at council's Gap Road site, "the first formal facility in the region".

New bike tracks planned, but unfunded

BUDGET

Phillip Island may have the lion's share of new bike tracks, a Bass Coast Shire Council hearing has been told.

The Bass Coast Mountain Bike Association this month gave a presentation at the draft 25/26 budget submissions, explaining a concept report will be presented at this month's council meeting, zeroing in on three potential bike sites on the island: Gap Road, Sunset Strip and Five Ways, with a fourth at West Area Road in Wonthaggi.

As reported last year, the much-anticipated final Mountain Bike/BMX/Pump Strategy was unanimously supported by councillors, despite it failing to commit to any specific project.

The strategy provided

an overview of more than 30 sites, with a shortlist of about 11 on Phillip Island for either dirt jumps, micro trails, mountain bike or pump tracks.

Because of the "vague" strategy, Cr Rochelle Halstead at the time moved a successful alternative amendment to create an implementation plan by June 2025 that will detail locations, costs and timeframes for delivery.

During the budget submission hearing this month, the bike association's Brad Janson and Trudi Smith told councillors the mountain bike community had "serious concern" the draft budget failed to allocate funds to the strategy's implementation plan.

Brad said \$500,000 should be allocated, which was about 12 per cent of the total estimated project cost,

and would kickstart stage one.

"The Mountain Bike (MTB) Concept Report, due for presentation at the June council meeting, outlines a staged implementation of MTB infrastructure across four key sites," Brad said.

"The total cost of the project is estimated at \$4 million, structured into six delivery segments."

"This project will fill a critical gap in local recreational infrastructure, supporting youth engagement, active lifestyles and regional tourism growth."

He said the funding would deliver a jump park at council's Gap Road site, "the first formal MTB facility in the region".

"Stage one has been strategically selected for its ability to deliver high community impact quickly."

Farmers being hit hard on multiple fronts

BUDGET

Local farmers risk being "rated out of existence", with farms potentially "no longer viable", according to a Surf Beach farmer.

Victorian Farmers Federation (Bass Coast) president Bill Cleeland made a submission to Bass Coast Shire Council's draft 25/26 budget hearing, saying the Farmers Federation was "very concerned about the recent significant increase in the average rates assessments payable by farmers".

"The rates burden borne by farmers has been increasing over time. This increase takes no account of the farmers ability to pay or the services they use," Bill said.

"Farmers' ability to pay rates fluctuates to a far greater degree than wage and salary earners."

He told councillors farmers were facing "astronomical" costs, including from the drought and also the new Emergency Services and Volunteers Fund (ESVF).

Added to this, he said, was the cost of "skyrocketing" Bass Coast Shire rates.

"We are not asking for a handout but asking for it to be equitable and at the moment it's not."

He said farm rates were well above the rate cap.

Based on an average assessment on the draft budget farmers will pay \$3963 compared to \$2391



Victorian Farmers Federation (Bass Coast) president Bill Cleeland says the rating system is unfair: "We are not asking for a handout but asking for it to be equitable and at the moment it's not".

for commercial rate payers and \$1690 for residential.

"The average farm assessment has increased rapidly in the last few years compared to the other land types."

Bill said he had experienced significant growth in his farm rates bill, with his 2009 rates \$6000 and by 2010 it leapt to \$10,750.

He said councils could adjust its differential rates to ensure ratepayers paid their fair share, "and no group of ratepayers experience significant and rapid increases in their rates".

The draft budget proposes the farm rate remains unchanged at 80 per cent of the general rate, but Bill argued the farm rate differential should be reduced to 60 per cent.

"It is clear in recent

years the State Government-imposed rates cap has not protected farmers."

"By a careful adjustment of the rate differential, the shire can achieve a fairer more equitable outcome."

"It would be good to have upper and lower limits so we don't experience massive leaps ... for rates to be adjusted each year to establish a fair and equitable distribution."

He said land was a farmers' working capital and was taxed disproportionately compared with the working capital owned by other people and businesses.

"I hate it when a farm sells on Phillip Island because it can have a dramatic effect on our own property."



The Nobbies centre, carpark and boardwalks are closed until the end of the month, after PINP said there was an "infrastructure incident" with the building last week.

Nobbies closed for June

TOURISM

Phillip Island Nature Parks has confirmed the Nobbies Centre, carpark and boardwalks will remain closed until the end of June.

The area was closed off last week after what was described as an "infrastructure incident" at the Nobbies Centre building, although no exact details have been provided.

Nature Parks CEO Catherine Basterfield said an engineering assessment took place last week.

"An engineering investigation has been carried out, with initial works focused on ensuring the building structure is safe to enable access to the true attraction of this site – the boardwalks, the views and the blow hole," Ms Basterfield said.

"Rectification works will be required on parts of the visitor centre's exterior.

"At this stage, we expect initial works to be completed and access to the boardwalks restored by the school holiday period."

Until then, the Nobbies Centre remains closed, with Nature Parks saying the building, carpark and boardwalks have been temporarily cordoned off to ensure the safety of the

public and staff.

"We urge the public to keep clear of the area. The Boulevard, running along the South coast of the Summerland Peninsula, between the Nobbies and the Penguin Parade, remains open."

The Penguin Parade Visitor Centre will be opening from midday each day, to accommodate any visitors requiring facilities on the Summerland Peninsula, including food, drink and retail options.

Public toilets are located at the Penguin Parade Visitor Centre car park and inside the centre.

Issues

The Nobbies Centre is situated on the exposed south-western point of Phillip Island in Western Port Bay and facing Bass Strait which is often subjected to extremely harsh weather conditions.

In January 2024, the Antarctic Journey at the Nobbies closed, due to "ongoing technical issues".

At the time, CEO Catherine Basterfield told the Advertiser the technology at the attraction had "reached the end of its life, but also referenced the state of the building.

"The facility itself is in a salted, wind-swept location and the infrastructure struggles, so there is

maintenance work."

In October 2024 the board approved appointing a contractor to undertake critical repairs on the Nobbies Centre.

At the time, Nature Parks infrastructure and planning general manager Jarvis Weston said the centre's maintenance and repair work was expected to run over nine months and would include repairs and maintenance to structural steel elements, rust treatments, painting, stormwater systems, eaves, facias, plumbing and electrical services.

He also said they would soon start long term planning for the site as part of a broader refresh to the Summerland Peninsula Master Plan.

An update from the Nature Parks Board of Management last month, confirmed it had approved undertaking a redesign of the Summerland Peninsula Masterplan.

A Nature Parks spokesperson said "future opportunities for the Nobbies precinct will be an important part of the Summerland Peninsula Master Plan".

"We look forward to hearing the broader community's aspirations for this iconic destination as we revisit this plan in the coming months."

Calls for greater protection of wildlife

BUDGET

More funding is needed to protect wildlife, including reduced speed limits and more local laws officers, a Bass Coast Shire Council hearing on the draft 2025/26 budget has been told.

Citizen scientist and Cowes resident Ron Day requested funding from council for reduced speed signage on the Cowes-Rhyll Road.

Ron previously tallied roadkill each day across three years on a 3.6km stretch of the road, finding nearly 1000 animal deaths.

He said he had been monitoring the same stretch from January 1 to May 25 this year and found 202 kills, including just over 100 wallabies.

"On the Mornington Peninsula 32 kangaroos have been killed on a single road there in 12 months and they received grant funding to introduce dynamic speed signage to indicate reduced speed," Ron said.

"But here there are 100 wallabies dead in five months."

He said council analysis showed between November 2019 and January 2020 there were 189,000 vehicles on the Cowes-Rhyll Road,

equivalent to 200 per day both ways.

The analysis showed 37 per cent exceeded the speed limit between 80-95km/hr and six per cent exceeded 95km/hr.

The Cowes-Rhyll Road was set to be part of a stage two speed review on Phillip Island, which is yet to eventuate, on hold for four years.

"It would be a complete faux pas if within the next 12 months agreement was reached on implementing speed changes but because of lack of budget funding allocation, implementation could not proceed," Ron told councillors.

"In the meantime, as each year passes, hundreds, if not thousands of wildlife are unnecessarily killed, not to overlook the road user safety aspect and vehicle damage resulting from these wildlife road impacts."

Previously conservation groups have called for dusk-to-dawn variable speed signs to protect wildlife.

Local laws

Former police officer and island resident Peter Fogarty told the budget hearing enforcement of council's local laws was not being ef-

fectively applied.

"A common thread among the community is 'why report it, the council does nothing'," Peter said.

"Under reporting of incidents is significant due to a lack of community confidence in the council community safety team taking enforcement action."

He said one of the most common offences was by owners of pet dogs, walking dogs off leash especially in wildlife areas, "deliberately flouting the very laws in place to protect them, their pets, wildlife and the community at large".

Peter said the lack of enforcement was not the community safety team's fault, but because they have had no additional resources over many years, "despite huge increase in population and pet ownership".

"The result being the council is supporting people doing the wrong thing, not those who do the right."

Peter provided a detailed economic analysis to provide more local laws officers.

"Education by social media is only an extremely small part of pet control and ignored in any case," he said.

"Enforcement is the strongest education."



Now Consulting in Cowes!



Dr. Carmen Brown

Specializing in Perimenopause/Menopause Care
with Dignity, Respect and Compassion

- Perimenopause
- Non Hormonal/Hormonal
- Menopause
- Other Options

187 Thompson Ave Cowes, VIC 3922
25 A'Beckett Street Inverloch, VIC 3996
03 8548 0350 fax 03 8799 2337
www.magnoliawomenshealth.com.au
info@magnoliawomenshealth.com.au

Handley & Anderson
FUNERAL DIRECTORS
Servicing South Gippsland & Phillip Island

Locally owned and operated by

Scott & Sharon Anderson 5672 1074

Caring and personal 24 hour Service

Main office Wonthaggi
3085 Loch-Wonthaggi Road, Wonthaggi
(P.O Box 35, Wonthaggi)

Cowes office (by appointment)
15 Warley Avenue, Cowes 5952 5171

Email: info@handafunerals.com.au
www.handleyandersonfunerals.com.au

A.F.D.A.

First a Nobel Prize, now a King's honour

COMMUNITY

Sunderland Bay's Nobel Peace-prize winning campaigner Dave Sweeney has added another gong to his name, awarded a Member of the Order of Australia (AM) in the King's Birthday Honours.

But, like with his Nobel prize, the award won't be going to his head any time soon.

"AM for me is before midday or listening to current affairs on the ABC," Dave joked.

"I support community and working collectively, so it's a welcome acknowledgement of years of work, but it's not like 'aren't I great'."

The AM was awarded for "significant service to nuclear-free campaigning, and to First Nations advocacy", with Dave a cofounder of the International Campaign to Abolish Nuclear Weapons (ICAN), for which he won the Nobel Peace Prize in 2017.

Among his many roles, he has also been the nuclear free campaigner for the Australian Conservation Foundation since 1996, is a former anti-nuclear campaigner for Friends of the Earth Australia, as well as being a cofounder and Victorian representative of the Aboriginal-led Australian Nuclear Free Alliance.

Dave – who spends a third of his time on Phillip Island, when not traversing Australia in his campaigning role – says the AM more than anything underscores the importance of engaging with democracy.

"We are really lucky in this country because we can criticise and not be shot or imprisoned for it. In a world that is often reduced to shouting matches, this is a recognition that different perspectives, non-violent debate and active engagement are valid.

"I have spent more than 30 years of my career saying no (to nuclear). If I was in Russia I wouldn't get an award. I'd be 4176B in Gulag 12. And if I



Dave Sweeney, who has been awarded a Member of the Order of Australia (AM) in the King's Birthday Honours, says Phillip Island is where he "recharges" to carry out his nuclear-free campaigning work.

was in the USA, I could be picked up by ICE without a warrant and chucked in a vehicle, which in other countries is called kidnapping."

Victories

Dave had his first foray into protesting in 1983 at South Australia's Olympic Dam, a campaign they lost, with the mine now one of the world's most significant deposits of copper, gold, uranium and nickel.

Throughout his career he has fought uranium mines, radioactive waste dumps, nuclear reactors and weapons, while supporting renewable energies.

He lists some of the big wins as protecting Kakadu in the Northern Territory from the planned Koongarra and Jabiluka mines, and halting the imposition of ra-

dioactive waste dumps in South Australia and the NT.

He admits while it is frustrating nuclear energy rears its head every few years ("nuclear is like Voldemort, the industry keeps re-grouping"), he believes this year's Federal election underscored a theme in the electorate.

Former Prime Minister John Howard, he says, lost both the election and his seat in 2007 after embracing nuclear power, a precedent repeated this year with Peter Dutton.

"It's never a single narrative in an election loss, the Coalition lost for a range of reasons, but nuclear was absolutely rejected. And it's not just Melbourne and Sydney rejecting it.

"The greatest policy difference at the election was one party supported nuclear and the oth-

er supported renewable energy.

"There's deep scepticism and caution about nuclear in the Australian community."

Recharged

Dave says while his job is "tiring" and it would be easy to become jaded, he remains positive.

"I do believe the arc bends to justice. It's just sometimes slow."

He says even though Australia has the world's largest single resource of uranium, it supplies only 10 per cent of the market, and "we are not digging more uranium or accepting more waste".

Furthermore, 45 per cent of power in Australia now comes from renewable energy.

"Two decades ago that was not the case. Back then renewable energy was seen as the domain of hippies, or the bespoke

hobby of a university professor."

The saying that most inspires his campaigning comes from Nicaragua: "The most beautiful victory is the war we avoid".

"Looking back I've been involved in campaigns against multiple mines, waste dumps, and reactors that haven't gone ahead, meaning the risk and damage they bring will not occur. "The absence of the bad is the good."

Dave acknowledges the world of campaigning has changed since he started, mostly thanks to social media, which on the one hand informs and unites, but on the other hand overwhelms and distracts.

So how to continue cutting through and being effective, especially when the "legal and political space has been consciously shrunk", such as banning protestors, and when "there's been a movement away from truth, evidence and science and a lack of trust in experts".

He says effective campaigning starts with clearly articulating criticism, providing an alternative and being solutions oriented, as well as offering authentic voices from impacted people.

Dave has been coming to the island since he was 16 and says it is his ballast.

"I plug in to nature here. I love watching the seasons unfold. I routinely swim or (cold water) immerse, not for endurance, but a refresher, a dust off.

"I poke around the garden, walk the cliffs and beaches, and go into Cowes for a resupply of food, drinks and words at the library.

"I often have quite pressured and conflicted work and this place provides perspective. It recharges me, reminds me of big natural cycles and that change is a constant.

"It reminds me that special places are precious and we need to take action to protect them."

Thinking about a home battery? Here's your chance to learn more

ENERGY

Totally Renewable Phillip Island (TRPI) is hosting a free community information session to help you find out everything you need to know about installing a home battery.

This morning session will cover the why and how of home

battery systems.

The event, at the Phillip Island RSL in Cowes, on Saturday June 14 from 10am to 2pm, aims to provide "easy-to-understand" advice for households looking to reduce their energy bills and gain energy independence.

TRPI spokesperson Garry Busowsky said with rising liv-

ing costs and the Federal Government's home battery rebate scheme it was the "perfect time to learn about the benefits of home batteries".

"The session will explore the different types of batteries, safety considerations, how batteries work with or without solar panels, and what rebates

or subsidies may be available to households," Garry said.

To give a practical perspective, two local solar and battery installers will speak about their services and display equipment.

Whether you're curious, already have solar panels, or are considering an energy upgrade,

this session is designed to answer your questions.

TRPI is a community-based group promoting the transition to renewable energy.

The session is free, however bookings are essential.

Register now at: events.humanitix.com/home-batteries-information-why-and-how

LET'S KEEP GOING

2025

DONATE NOW

35 YEARS OF
CLEANING UP OUR
ENVIRONMENT



SCAN TO DONATE
CLEANUP.ORG.AU

Clean Up



CELEBRATING
35
YEARS



College Tour

Wednesday 18 June, 2025
9.30am

NEWHAVEN
COLLEGE

Scan the code
to book a tour

Kilcunda a top tiny town

TOURISM

Kilcunda is a finalist in the Victorian Top Tourism Town awards, with voting now open to decide the winner.

Bass Coast Shire Council said the awards prove Kilcunda isn't just a town you drive through, it's a place worth hitting the brakes for.

And they are encouraging the community and all who love Kilcunda to vote now and help to steer Kilcunda into the winner's lane.

Bass Coast Mayor, Cr Rochelle Halstead said the nomination is something the whole community should be proud of.

"It's fantastic to see Kilcunda recognised as a finalist in these awards," Cr Halstead said.

"Over the past few years, we've seen real changes driven by your voices, from the safety and accessibility improvements on the Bass Highway to the new skate park and playspace that families are already loving.

"I'm incredibly proud of what's happening here, and I hope everyone gets behind Kilcunda and casts a vote."

Each year the Victoria Tourism Industry Council (VTIC) hosts the Victorian Top Tourism Town Awards to showcase the value of tourism to the towns and communities across Victoria, celebrating the diversity and outstanding regional



Bass Coast Mayor, Cr Rochelle Halstead said the nomination is something the whole community should be proud of and urged everyone to cast a vote for Kilcunda.

destinations our state has to offer.

Kilcunda's nomination as a finalist in the Top Tiny Tourism Towns category is alongside other towns with a population below 1500 people such as Flinders, Marlo, Halls Gap and Noojee.

Known for its iconic trestle bridge, surf beach, and the George Bass Coastal Walk and the Bass Coast Rail Trail right on its

doorstep, Kilcunda is a haven for nature lovers, active travellers, and those seeking an authentic seaside escape.

With its vibrant local events like the Kilcunda Lobster Festival and Running Festival, friendly community, and laid-back charm, the town offers visitors a perfect blend of adventure and relaxation.

The nomination is also a big moment

for the passionate local businesses who help shape the visitor experience and are celebrating being featured in the official award itinerary.

Highlights include the Kilcunda General Store, The Sticks, and the Ocean View Hotel, where sweeping views pair perfectly with a seasonal menu. Visitors can fall asleep to the sound of the ocean at the Kilcunda Ocean View Motel or the family-friendly Kilcunda Oceanview Holiday Park.

This nomination reflects the exciting growth and renewed energy in Kilcunda. Recent business booms, important government investments, and the passion of local business owners, tourism operators, community groups, and residents are all coming together to create something truly special.

Public voting is open now and individuals who cast a vote will automatically go into a draw to win One Perfect Melbourne Stay, a two-night stay at the luxurious Sofitel Melbourne on Collins and dining vouchers redeemable at some of Melbourne's best restaurants.

Voting for the VTIC Victorian Top Tourism Town Awards is now open until 5pm, Friday June 27.

To learn more and to cast your vote visit: www.vtic.com.au/toptourismtown/2025finalists/

/Sponsored article/

Mary settles in as Monash MP

POLITICS

It's been a whirlwind since the Federal election for Liberal candidate Mary Aldred, who won the seat of Monash.

Although the election was held almost six weeks ago, the seat wasn't called for several weeks, the official declaration of the poll only took place at the end of last month, and the newly declared MP is yet to open her Warragul electoral office.

"It should be up and running next week, and in the meantime, I've had mobile offices," Mary said. The mobile office, or listening posts, were a feature of her campaign and something the new member is keen to continue.

"I will continue to listen as the Federal member, and I'm determined to continue to meet people in the towns they live in.

"I want to be engaged. I want to listen, to represent the views, aspirations and challenges of local people and the best way to do that is to talk to people."

So far, there's been one trip to Canberra, for the Liberal Party leadership ballot in May.

Parliament will resume in July, where Mary will be officially sworn in as the member for Monash, and will get to make her first speech.

The date is yet to be confirmed, but Monash voters will be able to listen to the new MPs maiden speech via the aph.gov.au website.

While national media is focused on the turmoil within the Coalition post-election, Mary said she's been warmly welcomed into the federal party.

"I have had great support from the Victorian team. Jane Hume was in Monash regularly throughout the campaign."

Many of the Coalition front bench also visited the electorate to campaign alongside Mary, including new leader.

"Sussan Ley visited Phillip Island, met with residents, and came to Monash six times," Mary said.

"She has a good understanding of the issues here. Sussan is from a regional electorate and it's terrific to have a regional person in the job. She understands the unique issues regional communities face.

"It's good we have a leader that knows Monash well."



Mary Aldred has been formally declared the new member for Monash and in July will travel to Canberra to be sworn in and give her maiden speech to parliament.

Challenges

A line of communication to the leader is one way Mary will be making her case for better facilities and provisions for her electorate.

"My focus is getting on with the business of representing Monash," she said.

"My job is to stand up as strongly as I can and push for what we need.

"I am part of the Australian federal parliament, so I am making sure I have an informed and influential voice on big local issues on behalf of the local community."

One key focus will be the long-awaited sports hub for Phillip Island.

As part of her election campaign, the Liberals promised \$10 million, if elected, to kickstart the development of the reserve.

Despite now being the opposition, Mary said she remains committed to securing funding for the project.

"I'm looking forward to working with the committee and different sporting clubs to keep the pressure on," she said.

"I have got a constructive relationship with a number of government representatives, and I won't take my foot off the accelerator.

"Over the years, in my role on Committee for Gippsland, I've had discussions with state and federal politicians from both



Mary Aldred (second from left) with Senator Jane Hume (second from right), with Glenn Plymin and Peter McMahon, visited Phillip Island to announce an election commitment of \$10 million for the sports hub. Despite now being the opposition, Mary said she remains committed to securing funding for the project.

sides. I will continue to approach them, as I approach everything, in a respectful, constructive, persuasive manner."

Mary is also looking forward to meeting with Bass Coast Shire Council, to work together to achieve what is needed for the area. Alongside the sports hub, Mary said the key issues raised by voters have been drought, erosion, education, health services, and roads and infrastructure.

She said the impact of drought is huge in the electorate and she has already written to the Federal Treasurer asking that the ATO provide leniency to drought impacted farmers in Monash.

"A lot have had to sell off stock earlier than normal and that will impact their tax bill," Mary explained.

"I've asked if some of those larger payments could be deferred for 12 months."

With her office, and support staff soon to be up and running, Mary said her website and social media will be regularly updated, highlighting key priorities.

It will also show where and how constituents can get in contact with their new member.

"If people feel strongly about an issue or have something they'd like assistance with, come and talk to me. I am available

and accessible to the whole community."

She plans to continue her pop-up listening posts at community events and markets – something she described as her favourite part of the campaign – and said any such appearances will be published on social media.

These conversations on the ground are central to her approach as an MP.

"The best way to be a strong representative is being available and accessible to people," she said, stating she was determined to deliver for the people of Monash.

"To be able to get a little bit of a swing to the Liberal Party was pretty remarkable and I won't ever take that faith and confidence for granted.

"I am a product of this community. The way I go about things is shaped by the lessons I learned and the example of people in this community. They have been generous in their support and mentorship over the years.

"I am here to help, to serve the community. And I will do that in tune with values and principles I've always done things by."

Follow Mary Aldred:

www.facebook.com/MaryAldredMonash
www.maryaldred.com.au



VICTORIAN
TOP
TOURISM
TOWN

TINY TOWN
FINALIST 2025

Vote for Kilcunda!

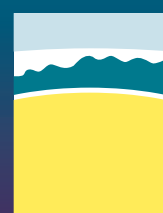
Kilcunda has been named a finalist in the 'Top Tiny Tourism Town' category as part of the 2025 Victorian Top Tourism Town Awards, hosted by the Victoria Tourism Industry Council!

Kilcunda needs your vote!

Scan the QR code or visit

vtic.com.au/toptourismtown/2025finalists/kilcunda

Vote to win! One lucky voter will win a luxurious Melbourne escape for two.



BASS
COAST

DAL finally released, Newhaven to expand

From page 1

During the planning panel hearings in 2023, lawyers for the combined Newhaven West landowners of 906, 910 and 930 Phillip Island Road, Newhaven, including Howard Verwey, Geoff Moed and Panny Letchumanan from the chocolate factory, argued locking the boundary at Boys Home Road was “ill-conceived”.

The planning panel report, also released last week, shows panel members agreed, recommending land west of Beverley Road does “not have a strong landscape character” and “is appropriate for sensitively designed residential and tourism development”.

During the hearings, proposed concept designs for the Newhaven West land were shown, which included extensive carparking along Phillip Island Road and service roads for mooted tourism facilities.

As reported in 2022 in the Advertiser, Geoff Moed, known to many locals as the former owner of A Maze’N Things, said he bought 30 acres of this Newhaven West site several years ago because he believed it was

earmarked by the council for future housing development and was within Newhaven’s town boundaries.

Last week Mr Moed told the Advertiser the whole DAL process meant for more than seven years he had been unable to make progress on developing the land and he had “lost a lot of motivation”.

“You can only beat your head against a wall so many times,” Mr Moed said, adding he knew nothing about the final outcome of the DAL until the Advertiser informed him.

He described the outcome as “not a victory but not an outright defeat”, asking whether the government would compensate him for the loss of about 10 acres fronting the water.

Given his loss of motivation, he said he was “undecided” about whether to develop the land or sell it.

What now?

Bass Coast Shire Council and public agencies are now required to endorse the draft SPP – the next key step before the DAL can be finalised.

Once approved, the Bass

Coast will become the fourth area in Victoria to have an SPP in place – joining the Bellarine Peninsula, the Surf Coast and the Macedon Ranges – giving it the state’s highest level of long-term planning protection.

An SPP must go before Victoria’s two houses of Parliament to change and the Planning Minister must ensure a review of the Bass Coast SPP occurs no later than 10 years after it starts.

Following a review, an SPP may be amended or a new SPP prepared.

Planning Minister Sonya Kilkenny last week said they had listened to the input of local communities.

“This draft policy lays the groundwork for long-term protections that will preserve what makes the Bass Coast so special for future generations,” she said.

Member for Bass Jordan Crugnale said the SPP acknowledged the “special significance of Bass Coast”.

Details: engage.vic.gov.au/project/distinctive-areas-and-landscapes-program/page/bass-coast

More photos, showing town boundary maps from the SPP at pisra.com.au



Cowes protected town boundary stays as it is, including heights up to five storeys within 200m of Cowes CBD.

No more growth, with a few exceptions

PLANNING

While Newhaven was the surprise outcome of last week’s State Government Distinctive Areas and Landscapes (DAL) announcement, what can we expect for other towns?

Cowes

The final chapter in the DAL involved the release last week of the final draft Statement of Planning Policy (SPP), which will soon be enshrined in law.

The SPP shows there will be no expansion of Cowes’ town boundary, which locks out farming zone land at the corner of Coghlan Road and Cowes-Rhyll Road (known as the Cowes Golf Club and Lechte land).

The town boundary map for Silverleaves shows where flooding is expected from Rhyll Inlet, right up to Coghlan Road.

Saltwater Creek to the west is an important green break between Ventnor and Cowes and is now protected.

With no outward expansion, all development will now occur as infill, including heights up to five storeys within 200m of Cowes CBD.

Cape Woolamai, Smiths, Ventnor

Planning observers described the 2023 DAL planning panel hearing as a developers’ “picnic” and a “forum to expand town boundaries”, with lawyers lobbying to include land in town boundaries including: 48ha at the Phillip Island airfield site; 34ha adjoining Smiths Beach to the east of the current hamlet; and the controversial 24-hectare “Cadogan” land in Ventnor, which a decade ago embroiled former state Liberal leader Matthew Guy in a political controversy.

The report from the planning panel hearing, also released last week, shows the panel members supported “varying (and mostly modest) extensions” to Cape Woolamai, to include the northern end of the airport land.

However, the draft SPP has rejected this, locking in current town boundaries for Cape Woolamai, Smiths Beach and Ventnor, with the planning panel recommending Ventnor be protected because of its environment, including populations of short-tailed shearwaters and hooded plovers.

A low-density residential area to the west of Sunset Strip is now included in the town boundary, allowing residential infill and effectively merging Smiths Beach and Sunset Strip.

“Urban development of Phillip Island should be carefully managed and largely contained in specific localities to support it as a nature-based tourism destination,” the report from the planning panel states.

“This will ensure Phillip Is-

land’s settlements remain subservient to Phillip Island’s environmental and landscape values.”

San Remo

At the 2023 planning panel hearings lawyers representing landowners from Potters Hill Road to Punch Bowl Road argued this area should be included in the proposed town boundaries, including land owned by the Chinese-backed Springway Corporate Group.

The final draft SPP agrees.

As previously reported, the draft San Remo structure plan-out for community consultation earlier this year – anticipated the SPP’s recommendations, with 150 hectares to open for subdivision to Punch Bowl Road, which will see up to 1200 new lots.

The draft SPP states the expansion will ensure protection of the coastline, with housing stopped at a ridgeline overlooking Bass Strait.

Mainland

Lawyers representing developers at Corinella and Coronet Bay also lobbied to have their land included in town boundaries, while the planning panel recommended land south of Cutty Sark Road, between Gellibrand Street and Agar Road be included in the town boundary.

But the SPP ignored these, with no expansion to Corinella and Coronet Bay town boundaries.

Grantville’s town boundary is unchanged, with low-lying land previously earmarked for industrial land formally taken out.

One of the biggest surprises from last week’s announcement is that Cape Paterson will have no expansion, a major win for residents.

Both the Bass Coast Planning Scheme and the DAL 2022 recommendations stated Cape Paterson would almost double north, but that has now been ruled out.

Both Wonthaggi and Inverloch have been left with a large question mark over them, with the SPP stating more work for these towns is required, with Inverloch needing more investigation from the impacts of erosion.

The SPP states the “challenge facing the Victorian Government and community is managing the growth of metropolitan Melbourne and the state’s regional settlements”, while conserving the environment, and town characteristics.

The report from the planning panel hearing states while existing State Government policy is to plan for at least 15 years supply of land, “it is appropriate to plan for up to 25 years of land supply across the Bass Coast Shire given the extent and impact of the DAL”.

“In time, Wonthaggi will provide for significant, but not all growth,” the report states.

More photos showing town boundary maps from the SPP at pisra.com.au

Farmers, woodlands left baffled

PLANNING

The release of the final chapter in the State Government’s long-awaited Distinctive Areas and Landscapes (DAL) process last week has – for some – left more questions and fewer answers.

When released in 2022, the DAL proposed a series of beefed-up landscape planning controls to protect significant landscapes around the island, including the coast and hinterland between Cape Woolamai and Ventnor, as well as the Rhyll Inlet, and areas north of Cowes-Rhyll Road to Newhaven.

Despite the report from the 2023 planning panel hearing, also released last week, offering detailed recommendations to these Significant Landscape Overlays (SLOs), the final DAL offers little detail.

It reiterates landscapes around the island are of regional and state significance, and states industries especially tourism need to be protected.

And it emphasises that by 2075 the area will have net-zero emissions and be adapting “to the impacts of climate change and natural hazards, including rising sea levels, coastal erosion, inundation and flooding”, with “very little waste” going to landfills and using renewable energy, including wave, tidal and offshore energy.

Farmers

In 2022, the Victorian Farmers Federation Bass Coast president Bill Cleeland – who has a 450-acre beef cattle farm at Surf Beach – said the proposed planning controls would severely impact farm operations.

This included any farmers under the proposed SLO areas would be required to get a planning permit to build a post and wire fence, while post and rail fences – which are more costly and elaborate – didn’t require permits.

The proposed planning controls also required farmers to apply for planning permits for



The lawyer representing conservation groups in 2023 said it was time for Bass Coast to have its first national park, in the Western Port Woodlands at Grantville. However, last week’s State Government planning announcement made no such recommendation, instead requiring yet more investigation, acknowledging continued sand mining in the area.

significant excavation work, with restrictions on farm sheds and vegetation clearing.

The report from the 2023 planning panel hearing recommends planning controls needed “further work to strike the right balance between protecting agricultural land and supporting the practical operation of agricultural enterprises”.

However, no further details are provided in the final draft Statement of Planning Policy (SPP) released last week.

Woodlands

The planning panel hearing report finds the Western Port Woodlands have national significance and there should be strengthened controls to protect the forest from sand mining.

But last week’s final draft Statement of Planning Policy (SPP) recommends further investigation to identify areas of high value in the woodlands, while ensuring “a balance with the development of extractive resources to support Victoria’s growth”.

Save Western Port Woodlands spokesperson Catherine Watson last week said the SPP acknowledged long-standing community

concerns about the potential impacts of sand mining.

“We’ve made real progress from the initial draft SPP which did not even mention the woodlands or the land use conflict,” Catherine said.

“Now let’s get on with including the necessary protections in our planning scheme with an Environmental Significance Overlay on the woodland corridor.

“We already have a large body of evidence relating to the values of the Western Port Woodlands.”

She said given the State Government’s recent identification of massive sand resources on cleared farmland in Cardinia and Baw Baw shires, there was “no longer a rationale or excuse to clear areas of high biodiversity to extract sand”.

The Victorian National Parks Association (VNPA) said they were concerned the SPP stopped short of implementing robust planning controls to prevent further habitat destruction.

“Recognition is a good first step. But the plan falls short of giving remnant coastal woodlands and their rare wildlife lasting protections,” the VNPA said.



Distracted drivers won't see the fine coming.

Just because you can't see the police, doesn't mean you can't be seen.
Mobile phone and seatbelt detection cameras are out there to keep our roads safe.
If you use your phone illegally while driving, you will face a minimum fine of \$593
and 4 demerit points. Chances are you will be caught.
Anywhere. Anytime. Anyone.

TAC**VICTORIA**
State
Government

Sarah sees Shades of Pink

FUNDRAISING

Once a year, the Phillip Island Football Netball Club (PIFNC) turns pink, raising awareness and funds to support breast cancer care.

The date for this year's pink round is August 23.

The mastermind turning the Bulldogs' red, white and blue into pink, Phillip Island's Sarah Pedersen, has just been named the Bass Coast 2025 Community Leader, in recognition of her work as co-founder of Shades of Pink.

While she's quick to stress it's the community that has done the great work for Shades of Pink, there's no denying Sarah's enthusiasm and commitment to the cause.

Sarah's friend Lisa Martindale secretly nominated her for the award, then confessed as the two women watched their kids play basketball.

"I think she knew I wouldn't be able to yell at her if she told me when we were out in public," Sarah laughed.

"I feel like a fraud being named community leader – it's community leading it, not me."

Sarah co-founded Shades of Pink in 2017 with her friends Kat Coopersmith and Sarah Allen, to support the Breast and Cancer Centre at Maroondah Hospital.

The charity was initially linked to football clubs in the Eastern League, which established a pink round, with clubs hosting ladies luncheon fundraisers.

When Sarah and her fam-

ily moved to Phillip Island seven years ago, she wanted to "bring a little pink to the island". The idea really took hold when she discovered how many local people have had, or are having treatment at the Maroondah hospital.

With her husband Cameron one of the island's Senior players and now head coach, it didn't take much to persuade the club to turn pink.

One of the biggest clubs in Gippsland, Sarah said the PIFNC threw its support behind the charity, and each year raises thousands of dollars through the Shades of Pink luncheon.

"The club has been incredibly supportive. They sourced and got pink footy jumpers made and were happy to put on the luncheon," said Sarah.

"And the club's sponsor, Bendigo Bank, contributed as well."

She also thanked her mum, and friend Lisa, describing them as her biggest supporters.

"They come along for the ride and are there whenever anything is needed."

"I couldn't have done any of this fundraising without them."

The Shade of Pink Ladies Luncheon is now a fixture on the local calendar, and this year will be held on August 23.

Tickets to the event sell out quickly, limited to just 60, the maximum capacity of the clubhouse.

"I believe if we had the room, we could have 100-plus at the lunch," said Sarah, who is keen to grow the event, with plans al-



Sarah Pedersen (left) with Shades of Pink committee members Kat Coopersmith and Samantha Bishop. This year's Ladies Luncheon and pink round at PIFNC is August 23.

ready fermenting to hold a second lunch in 2026, outside of the football club.

Luncheon

To date, the Phillip Island Shades of Pink has raised around \$12,000, thanks to the generosity and support of the local community and businesses.

Official supporters of Shades of Pink include Bendigo Bank, PIFNC and Salt Law, but Sar-

ah said they would welcome any other local businesses that wanted to be involved.

As preparations get underway for this year's luncheon, the team is working hard to source donations for the raffle and auction.

If you can help, please contact Sarah through the Shades of Pink website.

Cash donations can also be made online.

Through all its fundraising,

Shades of Pink has been able to purchase a 3D mammogram machine, 3D biopsy system and a portable ultrasound for use at the Breast and Cancer Centre at Maroondah Hospital, and funded wages for a breast cancer nurse, plus groundbreaking research through Health4Her.

As well as raising funds, Sarah wants Shades of Pink to help increase community awareness around breast cancer.

"First and foremost, we want everyone to be aware. Check monthly, know your breasts and if there's any slight changes, go to your GP."

Leadership

As for that Community Leader award, while she shrugs off the title of leader, there's no denying Sarah and her fellow nominees at the recent Community Awards, are leading (and shaping) the way our community helps and supports one another.

"The other people on the night – their dedication and what they are doing for Bass Coast is amazing," she said.

"If you have friends doing amazing things in our community, please nominate them."

"Nominating someone puts the work they are doing on the council's radar."

"For the council to go another step further and look into these things that people are doing, and fund them a bit more, that would be a great step."

To support Shades of Pink: www.shadesofpink.com.au/

Portable long service leave that moves with your workers.

Community Services Contract Cleaning Security

Employers in Victoria's community services, contract cleaning or security industry must be registered with the Portable Long Service Authority.

By registering you can ensure your workers are eligible for portable long service leave – leave that moves with them – even when they change employers in the same industry.

So, make sure you and your workers are registered.

To register your workers and find out more plsa.vic.gov.au



Come explore Phillip Island

BUSINESS

Local Way Tours officially launched its new Phillip Island Explorer initiative, which will change the face of transport on the island, with an industry lunch at Phillip Island Winery last month.

Local Ways founder Ray Staindl said at the heart of the project is a “two-part transport and touring solution designed to enhance accessibility, increase in-region stay, and deepen the visitor experience”.

The service includes:

- Daily direct transfers between Melbourne and Phillip Island, with airport and CBD hotel pickups and drop-offs.
- A daily hop-on, hop-off bus loop connecting island destinations and locations, including a late-night Penguin Parade return.

Ray said this integrated model “reduces the need for self-drive, alleviates congestion, and encourages longer, car-free stays – driving economic uplift for local businesses while supporting sustainable tourism”.

The Phillip Island Explorer will launch during the Phillip Island Whale Festival on July 4, operating for 1.5 weeks over the school holidays.

It will resume in September as a daily service, running both the Melbourne transfer and hop-on hop-off components.

“This bold new offering was not built in isolation,” Ray said.

“The Phillip Island Explorer is the result of extensive ground-work informed by collaborative reports and research from both state and local government, rec-



Ray Staindl, founder of Local Ways, has now launched the Phillip Island Explorer initiative, that includes Melbourne transfers and a hop-on, hop-off bus loop connecting the island's main destinations and locations.

ommendations from key tourism authorities, and valuable insights provided by respected industry professionals across the region.”

The project also reflects the lived experience of Ray, who has called Phillip Island home since he was young and already showcases the area as part of his island Day Tours.

“As someone who's lived and worked here, I know how special Phillip Island is – and how much more there is to share,” said Ray.

“This isn't just a transport service. It's a way to allow visitors to

stay longer, experience more, and discover the island's story – connecting visitors to the local character, natural beauty, and unique experiences that define Phillip Island as a premier destination.”

Ray said the response from the local industry and operators had been enthusiastic, and they were “eager to engage with a new model that connects guests directly with their accommodation, attractions and experiences”.

More information at www.localwaytours.com.au/phillip-island-explorer



The Newhaven College team for the Real World Design Challenge (from left): Freya Berry (Project Mathematician), Clint Heinze (Mentor), Issy Mahon (Project Manager and Project Scientist), Melinda Kelly (Maths Teacher), Tilly Stecher (Systems and Test Engineer), Jasmine Ruffin (Communication Analyst and Strategist) and Eli Bowker (Software Engineer).

Students ace Real World Design

EDUCATION

A team of five dedicated Year 11 students from Newhaven College has achieved international recognition for their outstanding work in the Real World Design Challenge (RWDC).

The annual STEM competition engages high school students (Years 9-12) in solving real-world engineering problems faced by leading industries.

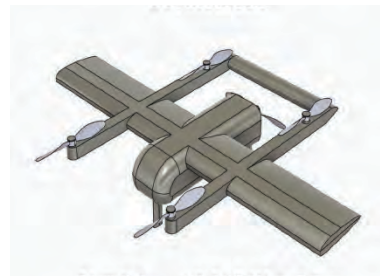
This year, teams were tasked with designing an unmanned aerial vehicle (UAV) capable of flying into fire zones to deliver and retrieve supplies. Students were required to use professional engineering software to develop their solutions and submit an academic paper, alongside a presentation detailing the design, functionality, and impact of their proposed UAV.

Their paper was of such a high standard, the group was invited to present it at the RWDC finals in Washington DC, however, they were unable to attend. Mathematics teacher Melinda Kelly and aeronautical engineer Clint Heinze mentored the group.

“The physics involved in the preliminary design of an aircraft is at the university level,” said mentor, Clint Heinze.

“This type of project introduces secondary school students to problems and challenges they will encounter in their professional careers.

“The fact that the team was able to so easily deal with the complex physics and mathemat-



Prometheus: the final design of the unmanned aerial vehicle (UAV).

ics involved in aerofoil selection and energy consumption was very impressive. The students were optimistic, committed and hard-working. It was an absolute pleasure to work with them.”

Year 11 student, Eli Bowker, described the experience.

“We were the only Australian team in the Real World Design Challenge. We assigned ourselves roles to tackle different parts of the challenge and our mentor, Clint Heinze, guided us through the design process and helped us with the aeronautical engineering involved.

“The team put in lots of work and ended up with a design we are very proud of.”

Mathematics teacher and mentor, Melinda Kelly, was thrilled with the team's efforts and the final result.

“We congratulate the students and commend them for representing Newhaven College with such innovation, determination, and professionalism on the international stage,” she said.

No sign of fox

WILDLIFE

Despite reports of a fox sighting on the island on social media last week, Phillip Island Nature Parks said they've found no evidence of any foxes.

However a Nature Parks spokesperson said the community should contact them if they think they've seen a fox.

“The Nature Parks encourages the community to report possible fox sightings on Phillip Island by calling 0419 369 365.

“We regularly receive reports, which are followed up and investigated by our pest control team.”



Nature Parks uses conservation dogs, like Springer Spaniel Flash (seen here as a puppy during training), to help detect evidence of foxes on Phillip Island.

COME AND GET IT.

AUTUMN EDITION OUT NOW. PICK UP YOUR FREE COPY AT THE PHILLIP ISLAND AND SAN REMO ADVERTISER, CAFES, RESTAURANTS, STORES, ACCOMMODATIONS AND ATTRACTIONS, AS WELL AS LOCAL NEWSAGENTS.



A legacy that will live on

OBITUARY

A lifetime of dedication and outstanding contribution to the Phillip Island community was acknowledged when Rhyll resident John Jansson was farewelled at a packed funeral service held at the Uniting Church in Cowes on June 3.

A man of quiet brilliance, boundless curiosity, with a deep love for this island and its stories, John recorded images and information, along with a remarkable collection of maritime artefacts, a priceless legacy for the generations to come.

Born at Warley Hospital in Cowes in 1948, the son of Frank and Helen Jansson, into a fifth generation of mariners, John grew up with his brother Ray on the family farm at Rhyll. A deep connection to the sea and interest in the history of Phillip Island was evident from an early age.

His primary schooling began at Cowes State school, and continued at the Wonthaggi Tech, where he was described by one teacher as the closest student to “genius” that he had ever encountered. John was awarded Dux of every year level while in attendance there, accepting the awards that came his way with the quiet reserve and innate modesty that accompanied him through life.

After finishing his secondary schooling, John began tertiary studies at the Swinburne Institute of Technology, going on to graduate from Melbourne University in 1971 with a degree in Civil Engineering.

During his studies he worked part-time for the Shire of Dandenong. After a brief stint employed at a tin mine in Ardethan, NSW, he returned home in 1972, the inland no match for his connection to Phillip Island.

John worked first as a civil engineer with the Shire of Bass, and then for the Phillip Island Shire, before going out on his own as a consultant engineer — a role he continued until his retirement.

Apart from computation work carried out for many local buildings, he was also responsible for the engineering levels of the revamped Phillip Island racing circuit which was built to hold the first Phillip Island Grand Prix in 1989, and other

high profile public buildings.

John's devotion to community during this period was unmatched.

His list of community memberships and contributions over 50 years reads like a who's who of the Island's organisations. Some of his many roles included Treasurer and committee member of the Phillip Island Conservation Society and he was an active member of the National Trust for 50 years and the Bass Coast National Trust Branch.

More recently he was presented with a Paul Harris Award from the Rotary Club of Phillip Island and San Remo, as recognition for a lifetime of community service.

History

John's true passion — his life's calling — was history, and he served many years on the committee of the Phillip Island and District Historical Society, of which he was a life member.

Long before it became fashionable to preserve the past, John understood its value.

In his twenties, he was quietly capturing the disappearing corners of Phillip Island, photographing historic homes, the island's faithful ferries in operation until the opening of the first bridge, weathered buildings — and documented numerous events, people and places in picture and story, over more than five decades.

His love of history and heritage saw him research local maritime history, the fishing industry, and also World War I on Phillip Island. John was presented with a major community award by the Phillip Island RSL for his meticulous research into the lives of the 45 young Phillip Island men who enlisted to fight in World War I, 21 of whom did not return.

John's lifelong fascination with wooden boats was certainly in his genes, as a fifth-generation mariner. In 1975 he purchased the historic goods shed on the Rhyll foreshore, to fulfill his long-held dream of boatbuilding.

His first creation, the 30-foot ketch Swan, was one of many new builds and careful restorations that brought history back to life on the water. The Amy Christina was restored in that shed.

Shipping played such a vital



An engineer, boatbuilder, historian, author and most of all a true gentleman, John Jansson passed away on May 25 at the age 76. Photo: Jason Cameron.

role in the lives of the island's early settlers, and was a prominent feature in the 1988 historic Phillip Island Bi-Centennial mural, unveiled by the Governor General. John and his father Frank provided artist Eric Juckett with their collection of photos of the iconic ships that plied local waters, to assist him with his work.

While John's historical insights were also invaluable, it was meticulous rigging diagrams that truly bore his personal stamp — drawings informed by a skill he began honing as a teenager, building and rigging model boats. That quiet obsession never left him; and he completed his final model boat just two years ago.

Another major achievement was a compilation of every recorded shipping movement in Western Port since records began — an extraordinary body of work.

John's expertise was often sought from the local community and beyond. As a researcher and author, he generously contributed to several notable publications on both maritime and local history.

He also played an important role assisting marine archaeologists from Flinders University in locating and identifying shipwreck remains off the coast of Phillip Island.

His deep knowledge of the local coastline, tides, and historical shipping routes were yet another example of John's dedication and detailed research making a lasting impact in the field of maritime history.

As well as building boats, he also built his own home — a mudbrick cottage styled on late 19th-century architecture, complete with a lace-trimmed verandah and handcrafted sash windows, overlooking the 'Nits' at Rhyll.

Genealogy was also a passion. Over decades, John painstakingly traced not only his own family's lineage but also produced a comprehensive Phillip Island family tree, reconnecting long-lost relatives and uncovering forgotten ties.

Beyond the island, John loved to travel. He especially enjoyed the Wooden Boat Festival in Hobart and many adventures including in the more remote areas of Australia, shared with Marion, his longtime companion and fellow explorer.

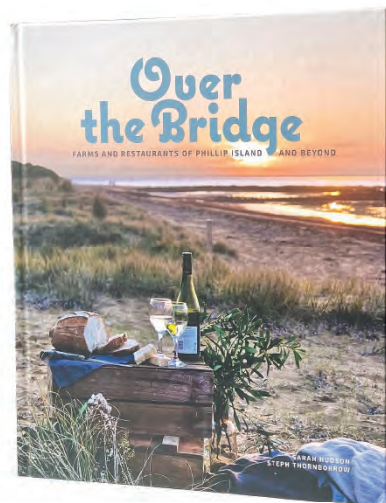
John leaves behind a legacy not just of photographs, artefacts, books and information, but of finely crafted boats — each one a reflection of his skill, patience, and respect for tradition.

He will be deeply missed by the people of Phillip Island.

An extended version of this obituary is available at pisra.com.au

Wonderful Winter reading.

Winter special, \$80 for two books plus a free Advertiser online subscription (valued at \$70).



2 FOR \$80

Available at the Advertiser office, 60 Chapel St. Cowes or www.pisra.com.au/subscriptions#subscriptions

PHILLIP ISLAND & SAN REMO
ADVERTISER



Shore Break by Chris Pitman, delves into themes of surfing, masculinity, isolation and the quest for human connection, live on stage at Berninneit on July 30, at 7.30pm.

Riding life's waves: surfing, mental health

THEATRE

Bass Coast Shire Council has announced a groundbreaking one-off event at Berninneit on July 30, combining live theatre, expert panels on mental health, as well as the opportunity to discuss mental health, bonding and connect.

Shore Break is a compelling 75-minute piece of theatre, performed by Chris Pitman, delving into themes of surfing, masculinity, isolation and the quest for human connection.

Berninneit is the first stop on this show's East Coast tour, following rave reviews and standing ovations at its Adelaide Festival Centre premiere.

Phillip Island is home to the oldest continuously running surf club in Australia and has a long and proud surfing history.

A council spokesperson said the event

celebrates the authentic allure of the ocean and its profound impact on surfers and beach enthusiasts alike.

"This deeply moving narrative resonates with audiences from diverse backgrounds, exploring themes of self-discovery and redemption," the spokesperson said.

The solo performance will be followed by a panel including local surfing legend Ross Clarke-Jones, Chris Pitman – the writer and performer of Shore Break and facilitated by mental health expert Paul Milne.

Attendees will then be invited for post-show nibbles in the foyer.

Don't miss Shore Break, Berninneit in Cowes on Wednesday July 30, from 7.30pm.

Tickets on sale now: www.trybooking.com/CZOBW or www.basscoastculturalvenues.com



Laurie Dixon (left) and tractor event organiser Ian McFee, at the Fordson Tractor Club of Australia's annual get-together at Rhyll.

Getting their motors running

COMMUNITY

The Fordson Tractor Club of Australia held its annual get-together at Rhyll recently, with dozens of tractors on show and enthusiasts coming from across Australia.

Farmer Ian McFee hosted the event, showcasing his own collection of about 17 tractors, alongside Laurie Dixon.

Ian said his oldest tractor was made in 1937 and his favourite was a Fordson Dexta from 1958.

The tractors were first produced by Henry Ford and Son in 1917 and then various companies until 1964 when the Fordson name was dropped and all Ford tractors were simply badged as Fords in both the UK and the US.

“What’s Your Story?”

25-27
July 2025

Festival
of Stories

COWES BAZAAR PRESENTS

THE YURT EXPERIENCE

117 THOMPSON AVE, COWES

TERM 2
22ND OF
APRIL - JULY
4TH 2025

COMMUNITY SCHEDULE

	MON	TUE	WED	THU	FRI	SAT
9:30AM		SOMACHI YOGA WITH ABBIE	GONG & HATHA YOGA WITH PANIA	MOVE, BREATHE & FLOW WITH DEE		MEDITATION WITH CAROLYN
4:30PM				MEDITATION WITH CAROLYN		
5:00PM			GONG & YIN YOGA WITH PANIA			

CASUAL CLASS: \$22
3 CLASS PASS AVAILABLE: \$55
MEDITATION: \$10

CONTACT US:
THEYURTEXPERIENCE_COWES@GMAIL.COM

Where does your story begin?

DNA & YOUR FAMILY HISTORY

Dr. Jenny Redman
Genealogical Society of
Victoria

Saturday June 21, 2025
1:30 – 4:00pm

- What is DNA and how it can help find your family
- The different companies and types of DNA testing
- Advantages and disadvantages of using DNA
- Understanding your results and solving brick walls
- Question time

Newhaven Hall – 23 Cleeland Street Newhaven

Free Entry and Refreshments

Phillip Island & District Genealogical Society Inc.

RSVP by 19 June to piadgs@outlook.com
or phone Sue on 0419 665 862



Contact us

Email: piadgs@outlook.com
Facebook: Family History – Phillip Island & District
Website: www.piadgs.org.au



Don't miss your chance for a live Fleetwood Mac experience with Running in the Shadows at the Union Theatre in Wonthaggi on Friday July 4, as they pay homage to the superstar band.

Relive the glory of Fleetwood Mac

MUSIC

Experience Australia's premier tribute to Fleetwood Mac – Running in the Shadows – on stage at the Union Theatre in Wonthaggi on Friday July 4.

Running in the Shadows is Australia's longest running tribute to this iconic band, and continue to tour this country (and others) extensively, playing in some of the best venues to capacity crowds.

Unlike any other, Running in the Shadows deliver the energy and enthusiasm night after night as they explore the music of Fleetwood Mac, to pay homage to the superstar band.

You will hear all your favourites: Gypsy, Landslide, Don't Stop, Rhiannon, Dreams, Everywhere, Go your own way, The Chain ... and many, many more.

The six-piece rock band explore Fleetwood Mac's extensive back catalogue, covering all the classic ballads, blues and rock songs from their five decade plus career.

Covering the early hits from the music of Peter Green, through to the Rumours album era, spanning up to Tango In The Night and even some Stevie Nicks solo material, there is something for every

Fleetwood Mac fan to enjoy.

The show has attracted rave reviews from audiences across the country.

"If you're a real Fleetwood Mac fan, then this show is incredible. The vocals are spot on, and the performance level out of this world. As close as you can get," said one happy audience member.

"What an outstanding show, brilliant vocals and music combine to deliver an amazing performance. A must see for any music lover ... can't wait to see it again," raved another.

"All the musicians were excellent, highly recommend this to anyone that is a Fleetwood Mac fan. A night to remember!"

Fleetwood Mac have sold more than one hundred million albums world-wide and been inducted into the Rock and Roll Hall of Fame.

Their songs are part of international music history.

Running in the Shadows at the Union Theatre Wonthaggi, Friday July 4, from 8pm.

Tickets available now via basscoastculturalvenues.com or www.trybooking.com/events/landing/1330333

/ Sponsored article /



It was a sea of blue beanies as the community turned out to support San Remo's Big Freeze.

Big day for Big Freeze

FUNDRAISING

The winter weather lived up to the Big Freeze name, but the rain held off for the San Remo Hotel's Big Freeze event on Sunday.

MC for the day, horse trainer Peter Moody kept the crowd updated on proceedings and was joined at times by Fight MND representative Lynne Kearney.

There were many shrieks and laughs as the hardy souls braved the ice bucket, raising money for this fantastic cause.

In an emotional moment, the son of a beloved San Remo local who is fighting MND, spoke to the crowd before being dunked, highlighting just how personal a cause this is.

"The dunkers and the community were incredible and dug deep," said a spokesperson for the San Remo Hotel.

"The grand total raise is \$26,988 which is just absolutely amazing."

The new total has outstripped last year's event, which raised over \$23,500.



Pink dunker Amanda Black emerges from the ice tank at the San Remo Hotel's Big Freeze.

As well as the money raised by the dunkers, hundreds of raffle tickets were sold, with some lively bidding at the auction raising over \$5000.



This year's Big Freeze at the San Remo Hotel exceeded last year's tally, raising almost \$27,000 for Fight MND.

COAST2COASTEVENTSPRESENTS

RUNNING_{the}SHADOWS

WONTHAGGI UNION COMMUNITY ARTS CENTRE

FRI JULY 4

BASSCOASTCULTURALVENUES.COM

FLEETWOOD MAC

Friends Of Churchill Island Society Inc.

FOCIS

Friends of Churchill Island Society Inc presents

Dr Greg Moore, OAM

Public presentation + Q&A.

Sunday June 22nd 2025, 2-4 p.m.

Newhaven Community Hall,
23 Cleeland Street, Newhaven VIC 3925

This is a free event, but you must register to attend by emailing our secretary, Christine Grayden:

secretary@focus.org.au or phone/text 0400 900 612.

Greg Moore is a Senior Research Associate of Burnley College, University of Melbourne, where he was Principal from 1988 to 2007; he was Head of the School of Resource Management at the University from 2002 to 2007. With a general interest in horticultural plant science, revegetation and ecology, Greg is particularly interested in arboriculture. He has been a member of the National Trust of Victoria's Significant Trees Committee since 1988 and chair since 1996. Greg has written two books, contributed to five others, has published over 165 scientific papers and articles, and is well-known to listeners of ABC radio. He was awarded the Order of Australia medal 2017 for services to the environment, particularly arboriculture.

All welcome. Don't forget to register!



This Sunday, June 15 the Phillip Island Jazz Club presents Graeme Pender Grenadilla Wood, at the Phillip Island Bowling Club, in Cowes, from 2pm.

Grenadilla Wood comes to Cowes

JAZZ

This Sunday, June 15 the Phillip Island Jazz Club presents Graeme Pender Grenadilla Wood, at the Phillip Island Bowling Club, in Cowes, from 2pm.

The name Grenadilla Wood comes from the Grenadilla Wood (Dalbergia Melanoxylon) from Mozambique.

This type of wood has been used since the end of the 19th century and the beginning of the 20th century and is quite possibly the most popular wood used in the making of clarinets.

"During last year's visit, Ashton Vas played the clarinet and boy was he great," said a club spokesperson.

"We are hoping that Ashton

will play the clarinet in June for a couple of tunes."

Performing in Grendilla Wood are Graeme Pender on clarinet, Frank Carter on trombone, Peter Hooper on banjo, Peter McIntyre on sousaphone and Graham Michel on drums and the very talented Ashton Vaz on piano.

"It will be great to see Aston performing once again.

"We recommend you book early if possible, which gives us an idea on how many tables and chairs we need for the day."

Tickets are \$20 for members and \$25 for visitors.

Sunday June 15, Phillip Island Bowling Club, 40 Dunsmore Road, 2pm - 4.30pm.

For more information: Jill Boyce on 0417 416 300.

Bells ring to remember refugees

COMMUNITY

The Phillip Island Rural Australians for Refugees (RAR) group is calling on the community to observe International Refugee Day on June 20.

An RAR spokesperson said the day was a way to acknowledge the overwhelming number of refugees in the world - 37.9 million according to figures compiled in 2024.

"There continues to be refugees seeking safety and security from persecution, conflict, threat of death and climate catastrophes.

"In Refugee Week we also acknowledge the economic, social and cultural contribution of people who have been accepted to re-settle in countries like Australia," the spokesperson said.

"Refugees are great contributors to their communities and our country."

RAR said there are many groups in the area working to assist refugees.

"Groups like the Bass Coast Refugee Sponsorship Group, have already been responsible for three families from Syria resettling in Gippsland.

"Closer to home, our RAR group is supporting refugees living in Australia with food donations, fundraising and advocacy," they said.

"We have also fund raised to support the education of women



The Phillip Island RAR group meet every Friday morning to ring bells at the front of Berninnet "to remind passersby that the issue of refugees has not gone away". They are calling on the community to mark International Refugee Day on June 20.

and girls in Afghanistan. Since the takeover of the Taliban women and girls have faced life changing discrimination that forces them to cover up, cease education at the age of six, no talking, laughing or singing in public among many other restrictions.

"In other words, erasing them from public life."

If you'd like to be part of the initiatives to help refugees, the Phillip Island RAR group meet every Friday morning to ring bells at the front of Berninnet "to remind passersby that the issue of refugees has not gone away".

"Then we go for coffee and lively discussion. Come join us."

Enquiries: Lesley 0432 163 694.



151 Thompson Ave, Cowes

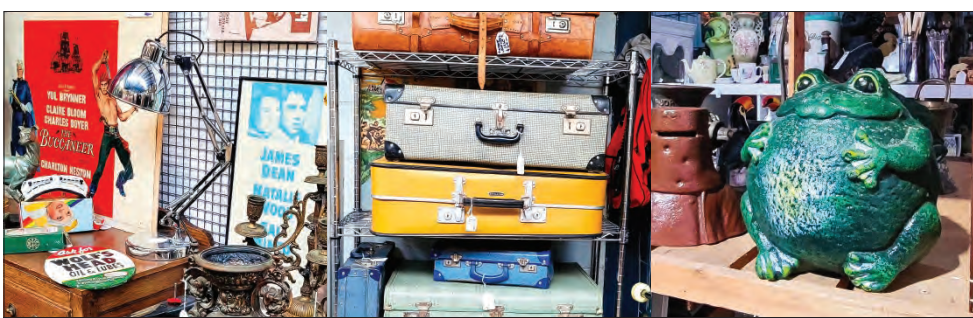
(03) 5952 2605

theislandmarketplace@gmail.com

Open 7 days a week 10am - 4pm



the island marketplace



COWES

ISLAND VINTAGE

217 Settlement Rd, Cowes VIC 3922
Phone: (03) 5952 2432 or 0425 846 258
info.cowesislandvintage@gmail.com
cowesislandvintage.store



Refugee Week
Coordinated by
Refugee Council of Australia

15 - 21 June 2025
Finding Freedom:
Diversity in Community

refugeeweek.org.au | #RefugeeWeekAU

Arifa (L) and Arozo (R) are former refugees from Afghanistan. Read what finding freedom means to them at refugeeweek.org.au. Photography by Damon AMB.

Coordinated by



Principal Partner



Event Partners



Major Partner



Partners



Supporters



Supporters



Find out more:





The Saddle Up! Country Music Roadshow returns to the Westernport Hotel this weekend (June 14), featuring Gareth Leach & The Narratives of Hope playing country classics, and DJ's spinning your favourite country bangers.

Time to Saddle Up

MUSIC

Howdy Partners – it's time to saddle up for the best country music night out after sundown – when the Saddle Up! Country Music Roadshow returns to the Westernport Hotel this Saturday, June 14.

Featuring the fantastic live band Gareth Leach & the Narratives of Hope playing your favourite country classics live, line dancing sessions and DJs spinning your favourite country bangers to keep the hoedown happening.

Saddle Up! Country Music Roadshow is your new go-to night out. Rustle up your best bunch of outlaws and compadres, grab your boot-scootin' baby, and head to the best saloon in town, The Westernport Hotel in San Remo, on June 14 for a night of country music fun you won't forget.

Featuring the music of: Luke Combs, Johnny Cash, Zach Bryan, Dolly Parton, Morgan Wallen, Willie Nelson, Chris Stapleton, Shania Twain, Zac Brown Band, Hank Williams, Tyler Childers, Brad Cox, Merle Haggard, Post Malone, Loretta Lynn, Jelly Roll, Miley Cyrus, George Jones, Lainey Wilson, Carrie Underwood, Patsy Cline, Luke Bryan, John Denver, Alan Jackson, Faith Hill, Tammy Wynette, Taylor Swift, Waylon Jennings, Beyonce (Cowboy Carter), Charley Pride, Conway Twitty, Buck Owens, Glen Campbell, George Strait, Vince Gill, Garth Brooks, Rascal Flatts, Randy Travis, Reba McEntire, Kenny Rogers and many more.

Find out more about Saddle Up! at their Facebook and Instagram pages.

Tickets: www.thewesternport.com.au

/ Sponsored article /



Joy Williams celebrated her 100th birthday on May 29, surrounded by friends and family, including her sons Richard and Andrew.

Joyful 100 birthday celebrations

COMMUNITY

Joy Williams of Rhyll celebrated her 100th birthday on May 29 surrounded by friends and family.

Now a resident at Phillip Island Care Community, Joy moved to the island with her husband Jim in 1987, after visiting their caravan at the Loch Road caravan park frequently throughout the 70s and 80s.

Few would have predicted such a long and fruitful life when tiny Joy was born.

Lucky to be alive after a harrowing premature birth, the doctors directed nursing staff to save her mother, "because there was no hope for her".

Proving them all wrong, Joy has been stoic, strong and sharp throughout her life, making the most of what life has thrown her way with a positive attitude.

Joy was raised on a soldier settlement farm in the small community of Lismore in the Western Plains of Victoria. With few transport options, she rode a horse to school at only seven years old.

The daughter of a World War I veteran, as soon as she was old enough, she joined the Air Force during World War II and served as a nurse at only 18 years old, declaring "I wanted to be able to do something to help as soon as I was able".

She married Jim, the "great love of her life" and raised two boys, Richard and Andrew, in Beaumaris, before moving to Rhyll.

Sadly, Joy lost Jim to liver cancer when he was 66, requiring her to draw on all her strength to carry on. She learned to drive in her late 60s, when she

was known for ripping around in her white Camry station wagon "Flivver" which has only recently been sold.

Still fairly mobile, she puts her good health down to "doing what you had to, to survive in the country".

Her family's subsistence living meant you grew and ate all your own food, vegetables and animals, and weren't subjected to the sugar and alcohol that have become too common today.

Joy has always loved her little fishing village of Rhyll, and helped with the community resistance to the proposed development of the Rhyll inlet.

"I've had a good life, a good husband and two boys," said Joy.

"And I have been very lucky to live on the island for all this time."

SADDLE UP! COUNTRY MUSIC ROADSHOW

LIVE BAND - DJ'S- LINE DANCING

FEATURING:

GARETH LEACH & THE NARRATIVES OF HOPE

PLAYING YOUR FAVOURITE COUNTRY CLASSICS LIVE

PLUS LINE DANCING SESSIONS,
SADDLE UP! DJ'S & MORE

SUPPORTED BY OUR MATES: **travla**
Australian Lager

SAT JUNE 14TH - THE WESTERNPORT SAN REMO
TIX VIA OZTIX.COM.AU

J09523AA

GIG GUIDE

13//6 **THE CORZ** - 7.30PM

14/6 **SADDLE UP** - 9PM \$21.50+BF

15/6 **EL ROLLO** - 5PM

17/6 **ANDREW HAMILTON** - 7PM \$30.30+BF

23/8 **SCARECROW-THE MELLENCAMP SHOW-35 YEAR ANNIVERSARY TOUR** - 9PM \$35+BF

20/09 **FRENZAL RHOMB 'A MAN'S (STILL) NOT A CAMEL' 25TH ANNIVERSARY TOUR** - 9PM \$53+BF

PLUS:
MONDAY NIGHT
INDUSTRY NIGHT
WEDNESDAY NIGHT
\$17 PARMA NIGHT
THURSDAY NIGHT
\$20 BURGER NIGHT
FRIDAY NIGHT
LOCALS NIGHT, \$750 JOKER POKER & MEAT RAFFLE

WWW.THEWESTERNPORT.COM.AU

J09523AB

Winter

at

Phillip Island RSL

Winter Warmers

LUNCH SPECIALS

MONDAY TO THURSDAY 12PM - 2PM

ONLY
\$15!

GO *fancy* - add a glass of Morgan's Bay for \$4.50

Winter Feast

Fish & Chips	Crispy Fish Burger & Chips
Chicken Schnitty & Chips	Caesar Salad
Beef & Cheese Burger & Chips	Spaghetti Bolognese

*Terms & Conditions apply Cannot be used in conjunction with any other offer (including PIRSL App offers) Membership points will not accrue on these specials

WEDNESDAY & THURSDAY

MEMBERS NIGHT DRAWS

Drawn 7pm | Wed & Thurs nights Entries open from 4pm-7pm

PLUS Members Meal Specials

*TERMS AND CONDITIONS APPLY

MYRSL CLUB MEMBERS' NIGHT

EVERY FRIDAY

Members Draw, Raffle, & more!

Draws at 6pm, 7pm, and 8pm

*TERMS AND CONDITIONS APPLY

SUNDAY PUZZLES, POPCORN

& Pinot

EVERY SUNDAY 2PM - 4:30PM ANZAC ROOM

SPACES ARE LIMITED-
REGISTER ONLINE NOW
or visit the concierge desk

*Terms & Conditions apply +18yr event

YULE BE GLAD YOU DID!

Christmas in July AT PHILLIP ISLAND RSL

SUNDAY TO THURSDAY

2 Course Menu

BOOK YOUR SPOT ONLINE

MEMBERS ONLY

*Seniors menu/pricing available with valid card

PLUS all day beverage specials!

GET IT ON
Google Play

Download on the
App Store

DOWNLOAD OUR APP:



NOT A MEMBER? JOIN NOW AND ENJOY THE REWARDS



PIRSL.COM.AU
225-243 THOMPSON AVE COWES VIC

[f](#) [@](#) /PHILLIPISLANDRSL

Specialist learning hub officially opened

Staff and students of Our Lady Star of the Sea Primary School (OLSS) at Cowes celebrated the official Blessing and opening of their new Specialist Learning area in May.

Father Manny Lomagno – Parish Priest of St Mary’s Parish in Cowes officially blessed the new facilities. He was joined by the Hon Martin Dixon – Board Director Diocese of Sale Catholic Education Limited (DOSCEL), Mr Paul Velten – Director of Catholic Education for the Diocese of Sale, Mrs Cathy Blackford – Principal of OLSS, invited guests and friends of the school, parish and the wider community.

The official party unveiled a plaque to commemorate the occasion.

The modular building named Our Gathering Space, serves as a dynamic multi-purpose hub to accommodate specialist learning including art, music/drama/digital technology and science.

Principal Mrs Catherine Blackford said the addition of this dedicated space is a wonderful asset to enhance the educational experiences of students.



Staff and students of Our Lady Star of the Sea Primary School (OLSS) at Cowes celebrated the official Blessing and opening of their new Specialist Learning area earlier this month.

“It includes two open learning areas, smaller break-out spaces, a kitchenette, and accessible amenities designed to foster creativity and collaborative learning.”

Director of Catholic Education for the Diocese of Sale, Mr Paul Velten, said the project involved relocation and refurbishment of an existing modular building previously used at St Peter’s College, Clyde North campus.

“The building’s refurbishment and adaptive reuse reflects DOSCEL’s commitment to environmental sustainability, aligning with the Church’s

call to Care for Creation.

“It is wonderful to see this building transformed to suit the specific needs of our Lady Star of the Sea Primary School. These new learning spaces will undoubtedly nurture creativity, engagement, and inclusive education for all students.”

Mr Velten extended gratitude to Crosier Scott Architects for their innovative design and to Kubale Constructions.

The building project which was completed in December 2024 ready for the 2025 new school year was self-funded by the school community.

Building a stronger community through resilience

Our Lady Star of the Sea Primary School is a proud partner with The Resilience Project (TRP).

A school spokesperson said students participate in weekly lessons, from TRP’s evidence based whole school wellbeing program, focusing on gratitude, empathy, mindfulness and building emotional literacy.

“Students also have the opportunity to strengthen their resilience every day, with daily Gratitude, Empathy and Mindfulness (GEM) chats in every classroom.

“This journey to build resilience in our young people is a combined community effort with our youngest community members participating in TRP at Island Kids, and after completing TRP program at Our Lady Star of the Sea, students have the opportunity to continue their resilience journey at Bass Coast College.”

The OLSS spokesperson said recently published findings from an independent evaluation by Monash University, show a long-term, whole-school approach makes a meaningful and lasting difference



Eve, Ella and Jippa, students at Our Lady Star of the Sea, taking part in The Resilience Project, an evidence-based, whole school wellbeing program.

ence to mental health and wellbeing.

“The study found that after six years, students at The Resilience Project schools saw higher scores across all positive mental health outcomes, including life satisfaction, hope and coping skills.

“Participants also saw significantly lower odds of mental illness (34 per cent lower for anxiety and 47 per cent lower for depression),” the spokesperson said.

“This research shows that when wellbeing is embedded in school culture, there are incredible long-term results.

“A dedication to supporting youth mental health is more crucial now than ever before.

“Staff, parents and students are all involved in building a culture of Gratitude, Empathy and Mindfulness (GEM) at Our Lady Star of the Sea, and we couldn’t be prouder.”

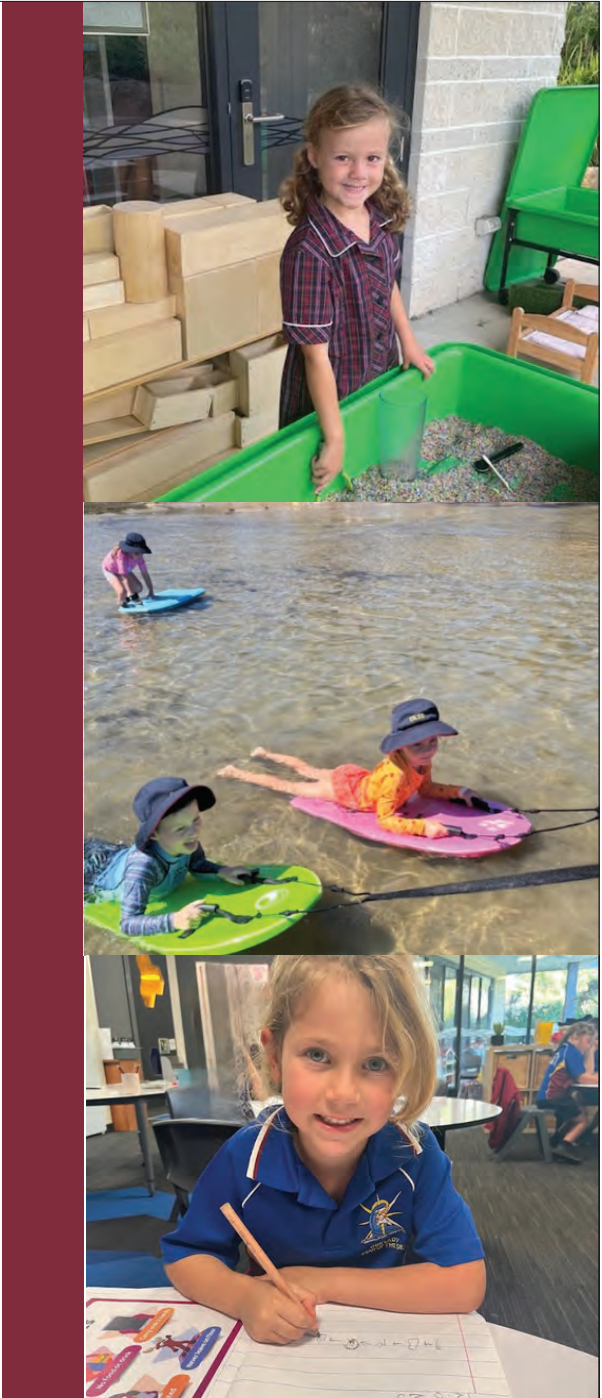
JD05566A

SHINE BRIGHT AT OUR LADY STAR OF THE SEA 2026 PREP PARENT INFORMATION SESSION

We warmly invite you to an information session to learn more about our beautiful school community.

- Meet our Leadership Team and current Foundation teachers.
- Gain insights into our evidence based curriculum and extra curricular activities.
- Let us show you how we support student development and wellbeing.
- Meet some of our current school families

Thursday 19th June 10:30-11:30



SCHOOL INFORMATION SESSIONS 2025

Advertising Feature



Hop, skip and a step into Prep at Cowes Primary School

Over recent weeks, children at the Phillip Island Early Learning Centre and surrounding kindergartens have visited Cowes Primary School for their first Prep transition session.

The children were eager to explore the new environment and learn about the different activities that Prep students at Cowes Primary School get to enjoy.

Using the beloved children's book *The Magic Hat* by Mem Fox as inspiration, the children explored how patterns, sequins and feathers can be used to create their own magic hat. Bilby students from the PIELC practiced their fine motor skills by cutting, gluing and assembling their hats which they then wore in an imaginative play activity.

These transition sessions are thoughtfully designed to ease and support students in building familiarity and confidence in the new school environment whilst fostering a sense of belonging and excitement about the adventures ahead. By blending exploration, creativity, and storytelling, the day set a positive tone for the



River enjoying *The Magic Hat* activity at the Cowes Primary School Prep transition session.

kindergarteners' educational journey.

Parents who are wanting to make an informed

decision about their child's primary education journey are encouraged to attend the upcoming informa-

tion sessions to learn more about what Cowes Primary School has to offer.

/ Sponsored article /



San Remo Primary student Connor lining up for a pancake, prepared by the team from the Rotary Club of Phillip Island and San Remo. More photos at pisra.com.au/education

Pancake breakfast treat

San Remo Primary School was treated to a special pancake breakfast this month, thanks to the Rotary Club of Phillip Island and San Remo.

The school was thrilled to receive the tasty treat from Rotary.

"The delicious pancakes were a huge hit,

and the morning was filled with smiles, full tummies and community spirit," a school spokesperson said.

"We truly appreciate the Rotary Club's continued support and kindness. It was a wonderful way to start the day and bring everyone together."

Are you contemplating where to send your child to school in the next few years?

We invite all prospective families to join us for a...

SCHOOL TOUR



Excellent academic and wellbeing outcomes, caring staff, strong community links, modern facilities and well equipped learning spaces.

On the morning you will:

- Meet our committed staff
- Hear about our approach to literacy, numeracy and wellbeing
- Hear about our specialised staff and programs
- View our well-equipped learning spaces

FOR ENQUIRIES: PRINCIPAL: Rodney McKenzie PHONE: 5952 2132
EMAIL: cowes.ps@education.vic.gov.au
WEB: www.cowesps.vic.edu.au



THURSDAY JUNE 19 at 9:30am
PLEASE MEET SARAH TYRRELL OUTSIDE THE SCHOOL OFFICE.

ROADWORKS NOTICE



Bass Highway (M420), Grantville Traffic Signals Installation

New traffic signals will be installed at the Dandy Premix Quarries intersection to reduce truck traffic through Grantville and improve safety for pedestrians and motorists using the Bass Highway.

- Works start mid-June 2025, approx. 4-month duration
- Lane closures, reduced speed limits, contra-flow traffic
- Deep Creek St and Bass Hwy Service Rd access impacted
- Two bus stops temporarily relocated

COMMENCEMENT AND DURATION OF ROADWORKS

Roadworks will commence mid-June 2025 for approximately 4 months on the installation of Traffic Signals at the Dandy Premix Quarries (Regional Group Australia) quarry intersection, 1381 Bass Highway, Grantville.

During roadworks there will be reduced speed limits, lane closures and contra-flow traffic through the Bass Highway construction zone with modified traffic layouts in place.

ROADWORK TIMES AND TRAFFIC MANAGEMENT

Roadworks across four (4) stages will generally be undertaken Monday to Saturday (6 days/week) between the hours of 7.00am – 7.00pm. Some short-term roadworks may be carried out overnight.

Traffic controls including Variable Message Signs (VMSs), Safety Barriers, Portable Traffic Lights, Traffic Controllers and Truck Mounted Attenuators (TMAs) will be in operation. Periods of contra-flow traffic operation – traffic transferred from usual carriageway across median to share part of the other carriageway, with traffic moving in the opposite direction – will also be required.

Stage 1 Roadworks are confined to the existing quarry intersection median strip and the access/egress lanes.

Stage 2 Roadworks (Northbound) **Stage 3** (Southbound) & **Stage 4** (Sealing Course to both) will involve Bass Highway carriageway closures and contra-flow traffic.

ACCESS ARRANGEMENTS

Deep Creek Street and the Bass Highway Service Road traffic will be temporarily impacted during Stages 2, 3 and 4.

Deep Creek Street: temporary use of Bonney Road for Bass Highway access and egress, including for Smith Street, Broome Court, Stewart Street, Malcolm Drive and Panoramic Drive traffic.

Bass Highway Service Road (western side of Bass Highway): temporary northbound egress to Bass Highway under traffic controller supervision. This will also impact on traffic from Blackwood Drive, Swan Street, Vision Lane and Lang Street using the Bass Highway Service Road for northbound entry to Bass Highway.



Map data: ©2024 Google, Imagery ©2024 Airbus

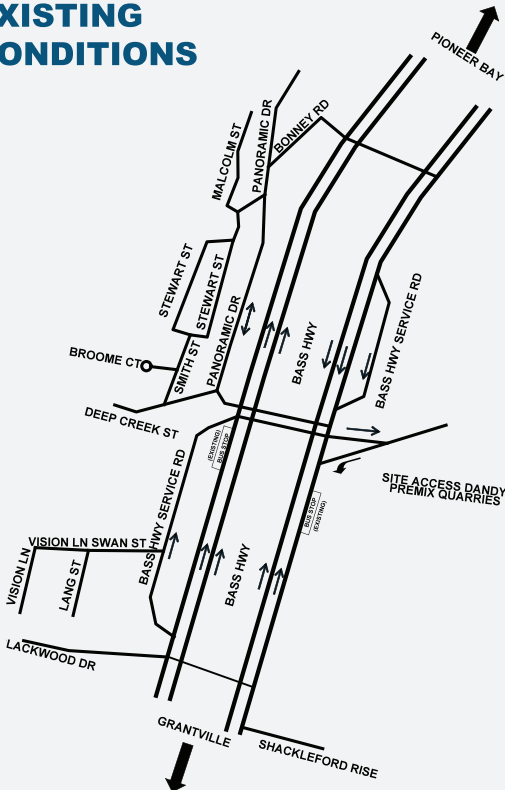
BUS STOPS

Two (2) Bus Stops in the construction zone (northbound & southbound) will be temporarily relocated north (approx. 100m & 200m respectively) with signage, waiting area provision and pedestrian protection provided.

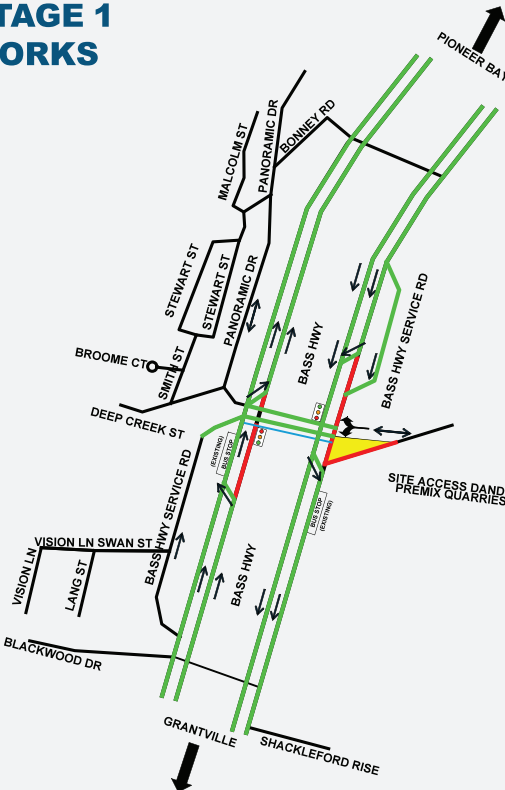
PROJECT OUTCOMES AND COMMUNITY BENEFITS

Installation of the Traffic Signals will enable trucks to turn right, northbound onto Bass Highway, resulting in a major reduction in quarry trucks through Grantville. The Traffic Signals will also improve Bus Stop pedestrian safety and assist safer Deep Creek Street traffic flows onto Bass Highway.

EXISTING CONDITIONS



STAGE 1 WORKS



Motorists are urged to obey speed limits and traffic controls during the roadworks. Your cooperation will greatly assist the safety of workers, pedestrians & other motorists.

Please contact us for further information or to share your feedback.

Applicant

Dandy Premix Quarries Pty Ltd
(Regional Group Australia)
Garry Cranny, Sustainability Manager
Email: gcranny@dandypremix.com
Mob: 0419 587 440

Head Contractor

R&C Asphalt Paving Pty Ltd
Simon Varghese, Construction Manager
Email: simonv@rcasphalt.com.au
Mob: 0427 480 668

LEGEND

- ROAD CLOSURE
- LANE CLOSURE
- PEDESTRIAN CROSSING
- WORK AREA
- TRAFFIC SIGNAL

Island
HOME

Advertising Feature

YOUR PHILLIP ISLAND AND SAN REMO PROPERTY GUIDE



This well-appointed home offers comfort, convenience, and modern living, just moments from local shops and amenities.

Stylish home close to shops, schools and transport

Perfectly positioned in a gated community and moments from local shops, medical, transport and schools, this well-appointed home offers comfort, convenience, and modern living.

Featuring three spacious bedrooms, including ensuite and WIR to the master bedroom, this property is ideal for families or downsizers.

The versatile floor plan includes two generous living areas, offering space to relax or entertain.

Other features include double garage with internal access, split system heating and cooling, gas log fire, stylish kitchen, low maintenance grounds, including pool.

Contact agent to organise a private inspection.
Address: 4/24 Redwood Drive, Cowes.
Price: \$745,000.
Contact: Kendall O'Garey, First National Phillip Island, 0410 595 130.



The property is idea for families, with low maintenance grounds and an inground pool.



A versatile floor plan includes two generous living areas, offering space to relax or entertain.

FIRST NATIONAL PHILLIP ISLAND

4/24 REDWOOD DRIVE, COWES
\$745,000
Perfectly positioned in a gated community and moment from local shops, medical, transport & schools this well appointed home offers comfort, convenience, and modern living. 3 spacious bedrooms, including ensuite & WIR to Master.
CONTACT KENDALL O'GAREY 0410 595 130

2/56 ANDERSON ROAD, COWES
\$660,000 TO \$699,000
The perfect package awaits with north facing views from the upper level, the ground floor is bathed in natural light and creates a warm and inviting setting which flows to a large deck and court yard.
CONTACT KENDALL O'GAREY 0410 595 130

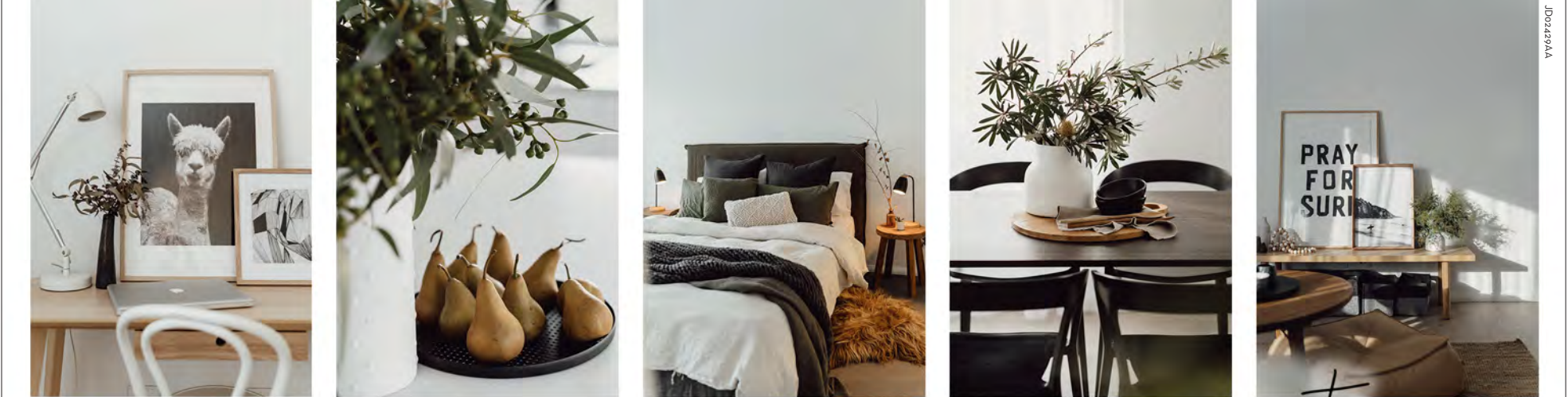
251/1 FINDLAY STREET, COWES
\$690,000 TO \$740,000
Nestled in the Foreshore complex is the perfect property with an extra large living area that has potential to cater for two families or groups of friends. There is excellent access to Cowes foreshore and shops/ restaurants. Set over a single level with a secure car park on title. It also has the potential for holiday rental income. An inspection is a must.
CONTACT MICHAEL MCLEOD 0412 712 034

526A VENTNOR BEACH ROAD, VENTNOR
\$659,000
Here's your chance at an incredible chance to own your own spacious half acre block that would have great water views if you built a double story, with established trees, providing both privacy and natural beauty. This property is ready to build.
CONTACT MICHAEL MCLEOD 0412 712 034

MORE STOCK URGENTLY NEEDED.

56-58 THOMPSON AVENUE, COWES
PH: 03 5952 3922

WWW.PHILLIPISLANDFN.COM.AU
INFO@PHILLIPISLANDFN.COM.AU



Property styling can give you an advantage

First impressions are everything and in an increasingly tough real estate market, Pint Size Property Styling can help your home stand out from your competitors. We know what it takes to create an emotional connection for potential buyers which translates to homes that sell more quickly and for higher prices. **Contact Steph on 0412 031 035**



BUSINESS GUIDE

LOCAL TRADES AND SERVICES

AIR CONDITIONING

ALWAYS COOL
AIR CONDITIONING
HEATING & COOLING SPECIALISTS
1800 931 631
www.alwayscoolair.com.au

Pic Lic 45137
Au 34551

BLINDS/AWNINGS

Creative Blinds & Awnings

FREE MEASURE & QUOTE
Mobile Showroom
Peter: T/F: 5952 5092 M: 0417 358 650

CARPENTER

CARPENTRY
Est 1982
Home Renovations
Maintenance & Repairs
Window Replacement | Decks
John 0447 975 626

DRIVEWAY RESTORATION

CLEAN, PRESSURE BLAST
AND RESEAL

DRIVEWAYS AND PATHS

MARK: 0418 105 262

AIR CONDITIONING

BONUS
GIFT CARD CAMPAIGN
OFFER ENDS 31 JULY 2023

SUPPLY, INSTALLATION,
REPAIRS & MAINTENANCE
Shop 1/13 Inverloch Rd, Wonthaggi
0400 001 465
citytocoastair.com

AUS9230

BLINDS/AWNINGS

0418-965-140
CALL NATH

Outdoor Blinds
Internal Blinds
Curtains & Sheers
Aluminium Shutters
Plantation Shutters

CONCRETER

Matt Burgess 0405 533 456

EARTHMOVING

MK EARTHWORKS
BULK CARTAGE * SITE CLEAR * TRENCHES * DRILLING

- Excavations
- Demolitions
- Drive/Pathways
- Retaining walls
- Spoil removal

- Free quote / consultation
- Experienced local business
- Innovative solutions
- Quality workmanship
- Transparent communication
- Full compliance / insurance
- Tight access specialists

* TIPPERS * EXCAVATORS * SKIDSTEER * AUGERS * ROLLER *
em: mkearthworks@gmail.com
ph: Mick - 0408 575 472

AIR CONDITIONING

COASTAL
REFRIGERATION & AIR-CONDITIONING
03 5678 5190
office@picra.com.au
Coastal Refrigeration and Airconditioning
coastal_refrig_and_aircon
AUS1426

COMMERCIAL & DOMESTIC
SERVICE, INSTALLATION, MAINTENANCE AND SALES

BUILDER

EXTENSIONS
RENOVATIONS AND
MAJOR REPAIRS
DECKS
ISLAND
DESIGN & BUILD
0417 503 003
ROB NORTON
INSURED & LICENSED BUILDER DB-U 61563

CONCRETER

**RAY MATTOCK
CONCRETING
AND EXCAVATIONS**

- Exposed aggregate paving
- Coloured - Slate - Brick paving
- House slabs - Garages

**PH: 5952 3853 FAX: 5952 5103
Mob: 0418 560 202**

EARTHMOVING

DIG IT & DEMO

AIR CONDITIONING

southcoast air
Air conditioning
& refrigeration
Cooling & heating specialists
Split system sales & complete installation
Service, repairs Electrical contractor
0402 044 377
Dave Miller
PIC. 43216
L109866 REC26099

CABINET MAKER

JOINERY SMOOTH
RECYCLED TIMBER CABINETRY
KITCHEN'S
INSTALLATION SERVICE
TRADITIONAL SAUNA'S
BESPOKE DESIGN
0457 239 600
MITCH.JOINERYSMOOTH@GMAIL.COM
WWW.JOINERYSMOOTH.COM.AU
JOINERYSMOOTH
ACN 672 446 769

CONCRETER

**NEW WAVE
CONCRETING**
0402 454 742
Luke Hinrichs
Phillip Island & surrounding areas since 1999

EARTHMOVING

**EVERYTHING
EARTHWORKS**

- SITE CUTS
- SITE CLEANS
- DEMOLITION
- LANDSCAPING
- RETAINING WALLS

0400 633 030

BLINDS & CARPET

**SOUTH COAST
FLOORING XTRA**
A FABULOUS FLOORING EXPERIENCE
155 Thompson Avenue, Cowes
03 5952 1488

CAR REMOVAL

**BASS COAST
CAR REMOVALS**

Unwanted cars removed free
CHEAP TOWING NOW AVAILABLE
Call Shane
5678 2002 or 0407 599 616

CONCRETER

**TIM NEWMAN
CONCRETING**

- Exposed aggregate
- House slabs
- Driveways
- Footpaths
- Sheds & garages
- All concreting needs

Tel/Fax 5956 8791
RMB 2180 Ventnor 3922 E:tnewman@waterfront.net.au
0419 312 805

EARTHMOVING

Bobcat/Excavator Tipper Hire

All aspects of earthmoving, driveways,
draining and landscaping
Rubbish removal
0418 372 399
Servicing all Phillip Island areas
Ray's Skip Hire + Earth works

ADVERTISING

To advertise in the
**Business
Guide**
CONTACT JANE ON
5952 3201 OR EMAIL
ADS@PISRA.COM.AU

CLEANING

**ISLAND
CARPET CLEANING**
EST1981

- Extreme heat extraction - Rapid Dry
- Commercial - domestic
- Rental bond specialists
- Fast, efficient service

0415 106 443
islandcarpetcleaning87@gmail.com

DECK RESTORATION

Enjoy your outdoor space
for years to come with DeckSeal!
DECK SANDING, CLEANING, OILING AND MAINTENANCE.

Call Nick on 0411 988 401
basscoast@deckseal.com.au
www.deckseal.com.au

ELECTRICIAN

**JACKSON ELECTRICAL
& AIR CONDITIONING**

- Reliable & fully insured
- Split system installers
- Air conditioning sales and service
- TV Antenna & data
- All types of electrical services
- Free quotes
- Hot water systems
- Ovens and cooktops

CALL MICHAEL 0427 633 667
CAPE WOOLAMAI REC 17893 LIC. 48834

Island Flue
Cleaning

- CHIMNEY & FLUE CLEANING
- NEW COWLS SUPPLY & FIT

0488 522 950 5956 6888
richandi@hotmail.com RICHIE & DI LAING

DECKS & VERANDAHS

**ISLAND
DECKS**

Specialists in all
types of decks
and verandahs
John Johnston 0414 714 179

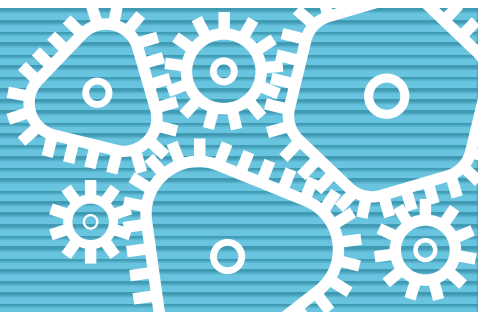
GARAGE DOORS

**GARAGE DOOR
REPAIRS**

0439 203 426
JET DOORS
EST. 2023

BUSINESS GUIDE

LOCAL TRADES AND SERVICES



GAS SUPPLIERS

WRIGHTON GAS SUPPLIES

Agency for **ELGAS**

Servicing Phillip Island & San Remo
For all household gas supplies

Bruce Wright

Tel: 5952 3252 Mobile 0409 164 441

LANDSCAPING AND DESIGN

**VICTORIA'S PREMIER DESTINATION
FOR ALL THINGS NATURAL STONE
AND PORCELAIN TILES.**

OVER 500 HUNDRED PRODUCTS TO CHOOSE FROM!

THE STONE STORE

0424 426 932

FACTORY 14, 71 FRANKSTON GARDENS DRIVE, CARRUM DOWNS
WWW.THESTONESTORE.COM.AU

PAINTER

Repair, Refresh, Renew
your home or business with
Red Ochre Painters

*"Fantastic job!!
Love your work... looks amazing!"*
- Peter, Cape Woolamai

**Contact us today
on 0425 711 217**

**RED
OCHRE
PAINTERS**

PHILLIP ISLAND

RESTUMPING

KEANE & SON

House Restumping & Levelling

Paul Keane

0427 080 309

keanesrestumping@outlook.com
PO Box 696, Wonthaggi, Vic, 3995

GUTTER CLEANING

GUTTER-VAC

Clean. Safe...Easy

Vacuum gutter cleaning,
gutter guard, solar panel cleaning,
ceiling cavities cleaning.

0427 393 291

swgippsland@gutternvac.com.au

RESTUMPING

**RESTUMPING &
RELEVELLING**

Restumping, Levelling,
House Raising & Repacking,
all renovation works

CALL 0418 506 788

Licence DBL24625

HANDYMAN

SJC HOME MAINTENANCE

Qualified Tradesman with over 35 years experience

Call for a Free Quote
No job too small

Quality work at a great price, Fully insured

Call Mick 0424 414 495
www.sjchomemaintenance.com.au

LAWN MOWING

Call 131 546

- ✓ FREE QUOTES
- ✓ Fully insured
- ✓ Police checked
- ✓ OH&S compliant
- ✓ All work guaranteed

RISK FREE

Lawn mowing, gardening, pruning,
hedging, rubbish removal, gutter cleaning,
weeding, mulching, odd jobs

www.jims-mowing.com.au

PLASTERING

WONTHAGGI plaster
& Construction Supplies

T: 5672 1535 F: 5672 3786

42 INVERLOCH ROAD, WONTHAGGI
wonthaggiplaster.com.au

CEMENTEL GYPROCK CSR NATIONAL MASONRY EARTHWOOL

ROOFING

SOUTHERN METAL ROOFING

Metal Roofing Specialists

- Metal Wall Cladding • Domestic & Commercial
- New Installation & Renewals • Maintenance
- Fascia, Gutters & Downpipes • Aluminium Gutter Guard

30 Years Experience

M: 0431 044 485 E: chrissavona@yahoo.com.au
Lic No 40950

HYDRAULIC AND MECHANICAL

ROTARET
HYDRAULIC ENGINEERING

Hydraulic, pneumatic and mechanical repairs.
Design and fabrication.
We also stock industrial supplies.

Factory 2, 3 Cyclone St, Wonthaggi
(03)5672 5924

Email: enquiries@rotaret.com.au

We are More than Just Hose and Fittings

LAWN MOWING

**Phil's Mowing
and Lawn care**

0408 559 408

Prompt - Honest - Reliable

Servicing Phillip Island and Surrounding Areas
From San Remo to Cowes, Wonthaggi to Grantville

PLUMBING

brenex

24 hours
7 days

plumbing & gasfitting

- Roofing - Gas - Water - Hot Water - Pumps
- Water Tanks - Sewers & Storm water - Blockages

Brendan Duncan 0418 342 649
PIC No. 26296
Email | brendan@brenexplumbing.com.au

SOLAR

islandenergy

SOLAR - BATTERIES - OFF GRID

ACCREDITED MASTER ELECTRICIAN APPROVED SOLAR RETAILER

1300 534 110

REC 19496

LANDSCAPING

AB
Landscaping & Concreting

Retaining Walls
Paving
Small Brick Repairs
Concreting
Landscaping
Small Jobs Welcome

**Phone Andrew
0408 822 263**

MARINE MECHANIC

TOPWATER MARINE

0402 761 692

SUZUKI MARINE

- Authorised Suzuki Marine dealership and service center
- Sales and service of new Suzuki outboard motors
- Suzuki genuine spare parts
- Inboard / outboard motor servicing and repairs
- Accessory Installations and electrical work
- Trailer servicing and modifications
- Anchor winches • Boat detailing • Insurance work

THE ULTIMATE OUTBOARD MOTOR

www.topwatermarine.com.au | info@topwatermarine.com.au
64 Dixon street, Inverloch

PLUMBING

CHUNKS PLUMBING

All types of plumbing
24 HOUR SERVICE Lic # 48411

- Gas • Hot water units
- Sewers, storm water, blockages

A local, reliable business

Daniel Campbell - 0438 520 546
daniel@chunksplumbing.com.au

PLUMBING

Same Day Plumbing Service

Morris Brothers
Lic 43482

Free Quotes - Pensioner Discounts
0403 116 435

SLIDING DOOR REPAIRS

SLIDING DOOR REPAIRS

Are your doors sticking, catching or just not sliding properly?

- Timber & Aluminium Sliding Doors
- Bi Fold Doors
- Cavity Doors
- Wardrobe Doors
- Security Doors
- Track & Roller Replacements
- Screen Replacements
- New Locks Fitted

And Much More

Now Servicing Phillip Island

Ph 0438 538 244
info@asdrm.com.au
www.allslidingdoorrepairsmelbourne.com.au

LAWN MOWING

Dave Costello

For all your lawnmowing,
landscaping &
rubbish removal

Call for a free quote

0411 175 957

PAINTER/DECORATOR

SHANE FENECH

Painting & Decorating
Quality Tradesman
New homes . Renovations. Re-paints
Free Quotes

0419 523 299

PLUMBING

RELIABLE PLUMBER

Fast Response at an honest price

Tappy the Plumber
0427 776 808

email: tappy@waterfront.net.au
Fully Licenced & insured. All work guaranteed Lic. No. 119269C

- NO CALL OUT FEE
- Leaking taps & toilets
- Hot water systems replaced
- Vanities & water
- Filters installed
- Gas fitting
- General plumbing

ADVERTISING

More
Business Guide
on next page.



Members of Bass Coast Health's Reconciliation Action Plan Working Group with copies of the plan (from left): Steve Fuery, Jane Ori, Jess Jude, Fiona Christensen, Dion Triptree, Kristen Yates-Matthews, Lauren O'Dwyer and Interim CEO Simone Alexander. Absent: Darelle Van Haaster, Aunty Doseena Fergie and Hope Thomas.

Bass Coast Health's inaugural Reconciliation Action Plan

RECONCILIATION

Bass Coast Health (BCH) launched its first Reflect Reconciliation Action Plan (RAP) at Wonthaggi Hospital during Reconciliation Week (May 27 – June 3).

The RAP lists BCH's actions over 12 months towards providing culturally accessible, responsive and safe health services to the community.

BCH Interim CEO Simone Alexander said health is an area of significant disadvantage for First Nations Peoples and BCH is committed to improving the community's health outcomes.

Ms Alexander said the plan was endorsed by Reconciliation Australia to guide BCH on furthering its efforts in fostering reconciliation with First Nations Peoples.

"Reconciliation action plans recognise that at the heart of reconciliation is the relationship between the broader Australian community and Aboriginal and Torres Strait Islander peoples," she said.

"The plans contribute to creating opportunities for these meaningful relation-

ships to be established and nurtured. This plan demonstrates our aspirations to enhancing the health of our First Nations People, knowing that good health is vital to them enjoying their lives to the fullest."

As examples of creating culturally safe and welcoming places, two wards at Wonthaggi Hospital bear First Nations gifted names and First Nations artwork proudly hangs in public places at the hospital. The new Phillip Island Community Hospital at Cowes will also feature First Nations artworks.

"To optimise the care we provide, we have a dedicated Aboriginal Health team of an Aboriginal Clinical Nurse Consultant and Aboriginal Health Nurse, who are supported by our Elder-in-Residence Aunty Professor Doseena Fergie and guided by our First Peoples Advisory Committee who are community representatives," Ms Alexander said.

Other actions implemented by BCH so far have been:

- the increased identification of Aboriginal and Torres Strait Islander peoples on admission

- the formation of the First Peoples Advisory Committee, which has been consulted about the expansion of the health service
- an Aboriginal representative on the Bass Coast Health Community Advisory Committee, which reports to the Board
- the development of a culturally-safe environment for patients and staff through the ongoing education of all staff
- the display of the Aboriginal and Torres Strait Islander flags at the front of Wonthaggi Hospital

The RAP launch featured a Welcome to Country, Smoking Ceremony and speeches.

Uncle Mik Edwards of Bunurong Land Council said, "Reconciliation is not just a word we make up for one week a year; it lasts forever. It lasts for every blink you take, every step you take."

Dion Triptree is Co-Chair of BCH's First Peoples Advisory Committee.

"I'm proud to see how Aboriginal and Torres Strait Islander voices are not only present but are

guiding Bass Coast Health towards being culturally safe and towards genuine reconciliation.

"Bass Coast Health is not just committed to listening but committed to walking alongside our First Nations People with respect and courage."

Darelle Van Haaster, BCH's Aboriginal Health Clinical Nurse Consultant, read a message on behalf of Aunty Professor Doseena Fergie, who is also Co-Chair of BCH's First Peoples Advisory Committee.

"I am pleased to say that this health service is committed to collaborating with the community to bring about positive culturally appropriate changes within its system so that Aboriginal and Torres Strait community members will feel culturally safe to participate.

"The outcome has been a steady increase in First Peoples utilising this service, thereby contributing to closing the gap in health inequities."

The RAP is available on BCH's website: basscoasthealth.org.au/reconciliation-action-plan



Newhaven Primary School Captains Louis and Lily Mae started the National Sorry Day and Reconciliation Week event with a personalised Acknowledgement of Country.

Students best foot forward for reconciliation

RECONCILIATION

Students, staff and parents/guardians of Newhaven Primary School joined together to pause and recognise National Sorry Day and the commencement of National Reconciliation Week (May 27 – June 3).

As a part of The National Reconciliation Week and the 2025 theme, Bridging Now to Next, all students in the lead up to this significant time at Newhaven Primary School prepared decorated images of feet with words of reconciliation on them, said Principal Sharyne Munday.

"Students then used these feet to create a 'bridge' of reconciliation at the front of the school."

The event began with a personalised Acknowledgement of Country by Newhaven Primary School Captains, Lily-Mae Murphy and Louis Sherburn as well as a brief speech

about the cultural significance of the day and the strength and resilience of the First Nations peoples.

"To commemorate the National Reconciliation Week theme students, staff and parents/guardians each took time walking the 'bridge' amongst the feet created by all the students, admiring the work of others and reading the individual words and messages of reconciliation our students had created," Ms Munday said.

"Our students, as always, created fabulous work and we are all very proud of our students who participated in commemorating National Sorry Day and National Reconciliation Week as well as the support and participation this event received from our parents/guardians."

The school's Marrung Leader Mr Adam Bush arranged the day.

PUBLIC NOTICES



We need active members willing to commit to the tasks required if another family is to be welcomed.

Upon joining our team and attending regular working group meetings, you will receive training and support to make a valuable contribution to our group's work and build rich relationships with our new arrivals.

We invite you to a 'Planning Conversation' on Thursday 19th June at 1.30pm at Mitchell House.

If you can't make it on that date, please email us your interest and willingness to join our small group: bcrsg2021@gmail.com

For more information, check out these websites:

BCRSG: www.bcrsg.com.au

CRSA: (Community Refugee Sponsorship Australia is the organisation that coordinates the CRIS Program) www.refugeesponsorship.org.au

New community space at PICAL

COMMUNITY

Thanks to support from Bass Coast Shire Council, a once-underused corner of a shed at Phillip Island Community and Learning Centre's (PICAL) Settlement Road premises has been transformed into a welcoming, light-filled community space.

The transformation was made possible thanks to a \$2000 Quick Response Grant from Bass Coast Shire Council and the incredible efforts of local volunteers.

What began as a simple construction project, a new internal wall to reconfigure the existing shed, quickly turned into an exciting opportunity to create something more – a dedicated common

room for connection, learning and community gatherings.

With no external access or ventilation in the newly created room, the grant allowed for the installation of a glass sliding door and window – instantly opening the space to fresh air, natural light and the wider PICAL Community Garden.

Now, this once-underused corner of the shed has become a bright and inviting place for people of all ages to come together. Whether it's a quick cuppa during the Fix it Cafe, a safety briefing before the "Girls on Tools" workshop, a garden class with local school kids, or a quiet meeting between volunteers, this new common room is already becoming a hub of connection and activity.

Community effort

PICAL centre manager David Rooks thanks the dedicated volunteers who helped bring the shed transformation to fruition.

"The transformation of the shed space and creation of our new common room would not have been possible without the vision, passion and dedication of our volunteers," David said.

"Sue Lyford, a volunteer, took the action to write and submit the grant application, while local community members and volunteers including Mark Lyford, Russel Wickling and a registered builder Richie Davie gave their time and expertise to build the wall and install the new glass sliding door and window.

"This really does show the power of people coming to-

gether for a shared purpose."

The upgraded space will allow PICAL to host more programs, hire the room for events and workshops, and provide a warm, functional area for rest, collaboration and inspiration.

It will serve as a common room for:

- Community gatherings and social connection
- Gardening and sustainability classes
- Art and craft workshops
- School and youth programs
- Volunteer co-ordination and support
- A quiet place for a break, a chat or a shared meal

"This project speaks to what makes Phillip Island special – a community that cares, collaborates and creates spaces that bring people together," concluded David.

KEEP IT LOCAL

DIRECTORY

ACCOMODATION



RANFURLIE BED & BREAKFAST

A cosy retreat that sleeps up to six people. From \$75 per person per night including a delicious continental breakfast. Call 0434 174 251 for more info.

HOME



Phillip Island Laundromat
Self-Service Laundromat, Wash and Dry

Every Tuesday Local's Day 15% OFF with the CODE: LOCAL15

Eco Friendly Wash & Dry Self-Service
NEW: Linen Service Available!
pilaundromat@outlook.com
4/14 The Esplanade, Cowes, 2nd Floor, above M&O Café

SOUTH COAST FLOORING XTRA

155 Thompson Avenue, Cowes 03 5952 1488

COWESBOAT CARAVAN & STORAGE

FULLY SECURED - FULL SURVEILLANCE

COWES SELF STORAGE

24 hr Video Surveillance

Ray White Phillip Island, 56-58 Thompson Avenue, Cowes 5952 2799

FURNITURE OUTLET YOUR FURNITURE SHOP

- Beds • Mattresses
- Sofas • Lounges
- Dining • Tables • Chairs
- Office • TV • Outdoor

PHONE RON 0419 335 985
sales@furnitureoutletphillipisland.com.au
153 Thompson Ave., Cowes (near Ampol Servo)
www.furnitureoutletphillipisland.com.au

Melaleuca Lodge Secondhand Book Sale

Open 10-12 every Saturday

BILLS BOOK SHED
1 Watchorn Road, COWES (off Settlement Road)
0437 949 029

SUBSCRIBE ONLINE
www.pisra.com.au

PHILLIP ISLAND & SAN REMO
ADVERTISER



YOUR LOCAL COMMUNITY STATION - GREAT MUSIC AND EVERYTHING LOCAL
across Phillip Island and Western Port on
89.1FM

LEISURE



OPEN 7 DAYS from 10am
1805 Phillip Island Rd, Cowes
Ph: 03 5952 2283
amazenthings.com.au

FUN | MAGIC | ADVENTURE

Watch the little penguins waddle home

See more & SAVE with a **3 PARKS PASS**



Phillip Island NATURE PARKS

Penguin Parade, Churchill Island, Koala Conservation Reserve
BOOK NOW at penguins.org.au

WWW.WILDLIFEBOATCRUISES.COM.AU

Cruise the Island
four departing daily



Wildlife Coast Cruises

Phillip Island Tenpin Bowling & Entertainment Centre

91-97 Settlement Rd, Cowes 5952 3977



The Centre
Cowes

Call 1800 247 669
thecentrecowes@hotmail.com

Venue for Hire

Music. Arts. Dance. Functions. Private Events.



AUTOMOTIVE



Phillip Island Tyre Service

101 Settlement Rd, Cowes 5952 1480



PHILLIP ISLAND TYRE SERVICE CENTRE

3 HARVEY DRIVE, COWES
03 59 523 305

PHILLIPISLANDTYRESC.COM.AU
HELLO@PHILLIPISLANDTYRESC.COM.AU



Uber
pick up and go

Uber X, Uber XL, and Uber Maxi, up to 12 seater buses

TIM BROWN *Phillip Island* 0412 572 373

BEAUTY



Mobile Hairdresser
Over 20 years experience
Claire Sunderland 0408 566 620

BARBER

72 CHAPEL STREET COWES.
0482 936 843
WALK INS ONLY



FINANCE

Your local bank for locals

Bendigo Bank

San Remo (03) 5678 5833
Cowes (03) 5952 3383
Grantville (03) 5678 8773

 **LJ Hooker Home Loans**
Gippsland

For all your refinancing or home loan needs in Gippsland and surrounds.
Gabriel Caffieri - Franchise Owner | Lending Specialist
gcaffieri@ljhookerhomeloans.com.au | 0421 338 914

FOOD & DRINK

KRISTO'S
CHARCOAL ROTISSERIE

Online ordering now available
kristoscowes.com.au | 03 5952 3355
Shop 5 /15-16, The Esplanade, Cowes

"THE BEST HAMBURGERS ON THE ISLAND"
ONE WITH THE LOT ... HEAVEN! CHIPS TOO!
ORDERS 5907 6796
RHYLL GENERAL STORE AND BOTTLE SHOP



COMPUTER SERVICES

PRINTITFAST

San Remo | 5952 5379
info@printitfast.com.au
www.printitfast.com.au

Shop Local
Support Local
PRINT LOCAL

IT REPAIRS
KEEP CALM & LET ME FIX IT

Phone, PC & Electronic Repairs
0490 424 415
www.itrepairs.net.au
admin@itrepairs.net.au



MEDICAL

NEWHAVEN MEDICAL CLINIC

Shop 5 8-10 Forrest Ave, Newhaven

Opening hours:
8.30am-5pm Monday-Friday

Call 5926 6910
to make an appointment!



YOUR PREMIUM LOCAL DENTIST

(03) 9120 2122

Handley & Anderson
FUNERAL DIRECTORS

Locally owned and operated by
Scott & Sharon Anderson 5672 1074



0448 602 005

www.basscoastfunerals.com.au

REAL ESTATE

O'Brien Real Estate
San Remo | Cowes | Wonthaggi
03 5678 5885 | 03 5952 5100 | 03 5672 5558

Your local experts

Specialising in real estate sales, commercial sales & leasing, business sales, residential asset management, holiday accommodation, owners corporation and storage.

obrejudithwright.com

SENIOR WINNER 2024
Agency of the year
COWES

SENIOR WINNER 2024
Rental Agency of the year
COWES



Selling more properties on Phillip Island than any other agency
5952 2799
raywhitephillipisland.com.au

Stockdale & Leggo

03 8583 4701

PHILLIP ISLAND | SAN REMO
We see more than property.
stockdaleleggo.com.au/phillipisland

ALEX SCOTT AND STAFF *Est. 1886*

113a Thompson Avenue, Cowes
5952 2633 ALEXSCOTT.COM.AU



GARTH LISLE
Property Consultants

Shop 3/129 Marine Parade SAN REMO
5678 5878 www.glpc.com.au

WE KNOW REAL ESTATE

Surfers play crucial role in beach safety, study shows

BEACH SAFETY

A first-of-its-kind study by La Trobe University has shown the critical contribution surfers make to beach safety in Victoria.

The findings will come as no surprise to the local surfing community, which has long been acknowledged for their role in surf rescues and beach safety.

The research, published this month in Safety Science, collected data from 562 recreational surfers from 2020 to 2023.

Researchers found that for every 100 surfs, respondents on average gave beachgoers safety advice 11.6 times, first aid 0.4 times and assistance in the water 1.1 times.

With more than 6.3 million surfs carried out each year in Victoria, researchers estimate that this could equate to more than 70,000 assists and almost 25,500 cases of first-aid provided by surfers annually.

Jake Eisen, President of the Phillip Island Board Riders Club (PIBC) said the report's findings were not surprising, adding it was not unusual to see people heading in for a swim, clearly unaware of the local conditions.

"I've started having quiet words with people before they get in – some listen, some don't, but at least you've tried."

"A lot of these situations happen after hours, when it's just local surfers around."

"Earlier this year, two of our teenage members, Abbey Clarke and Niamh Moore, rescued multiple swimmers at Smiths Beach."

"Another member was involved in a major incident with

multiple swimmers – while tragically there were fatalities, he also saved lives that day and I know this has happened to him on more than one occasion," Jake said.

"We're not lifeguards, but surfers often end up being the only ones there. The Surfers Rescue 24/7 course through Surfing Victoria has helped prepare some of us, but more awareness and funding is definitely needed."

Local rescues

Over the years, there have been countless stories of local surfers assisting people caught in rips when swimming at unpatrolled beaches.

At the start of 2025, local surfers Abbey Clarke and Niamh Moore rescued a couple who had drifted out to sea at YCW beach.

In February 2024, along with local surfer Leigh Conway, Niamh helped rescue a family of three at Smiths Beach, including a three-year-old baby, who were being swept out to sea. That same weekend, at Kilcunda, local surfers helped rescue three people from the surf including a man in his 40s, and a teenage and primary school aged girls.

The dangers of the island's unpatrolled beaches hit the headlines in January 2024 when four people lost their lives at Forrest Caves, in the worst incidence of mass drowning in the state in nearly two decades.

Surfers also pulled a man from the water at Surf Beach that same month, but he was unable to be revived.

Not all surfer rescues involve



A first-of-its-kind study by La Trobe University has shown the critical contribution surfers make to beach safety in Victoria. In February 2024 and January 2025, surfer Niamh Moore was involved in two different rescues at Smiths Beach, two of many such incidents involving local surfers.

visitors getting caught out by local conditions.

In 2021, local surfer Stephen Fullarton suffered a stroke while on his stand-up paddle board at Crazy Birds, and was rescued by fellow surfers.

Study

The La Trobe University study is the first to quantify surfer beach-safety actions, providing real-world implications of their impact.

"The results of this study provide an important and much-needed estimate of the rate of safety actions of Victorian surfers to beach users and the wider community," said Kiera Staley, Research Fellow at La Trobe Business School's Centre for Sport and Social Impact.

"Our study clearly demonstrates that surfers are a valuable water safety resource through the help they provide to people experiencing difficulty in the water."

More than 95 per cent of Australia's beaches lack professional lifeguard supervision, leaving bystanders as the primary emergency responders in unpatrolled locations.

While more than 45,000 active volunteer surf lifesavers and 1350 professional lifeguards provided services at beaches across Australia in 2024, an estimated 740,000 surfers were on the coastline, across patrolled and unpatrolled locations.

This study helps to quantify surfers' impact on community safety. In addition, it shows the benefits of first aid and board

rescue training on their ability and willingness to assist.

Surfers in the research assisted someone experiencing difficulty in the water 341 times over the three-year survey period.

Those with a board rescue qualification provided beach safety advice 29 per cent more often and first aid three times as much as those who weren't trained in board rescue.

Kiera said the study built a case for all surfers to receive free first aid and rescue training.

"Surfers are a potential resource for safety action to support other beach users," Kiera said.

"When it comes to assisting people experiencing difficulty in the water, surfers are generally proficient swimmers with good beach hazard knowledge."

"This research can inform future beach safety strategies and educational initiatives."

Surfing Victoria CEO Adam Robertson said surfers were fully aware of their impact on beach safety.

"This study highlights the extent of that role and the contribution surfers make each year to water safety," Adam said.

"Surfers are in the water all year round and often at unpatrolled beaches, while also in possession of a surfboard, which is the perfect flotation device to assist in a rescue."

"Teaching surfers and beachgoers how to keep themselves safe – and how to perform a rescue if required – is key to keeping beaches safe across the country."

Details: doi.org/10.1016/j.ssci.2025.106914

LETTERS TO THE EDITOR

Tell us your views with a Letter to the Editor (350 word limit). Email to advertiser@pisra.com.au, or submit online at pisra.com.au

Bowel cancer story

Bowel cancer is the second biggest cause of cancer death in Australia. But if detected early, more than 90 per cent of bowel cancers can be successfully treated.

Bowel screening is one of the most effective ways to detect the early signs of bowel cancer, but unfortunately only 42.6 per cent of eligible Victorians are participating in the National Bowel Cancer Screening Program.

Australians aged 45-74 are eligible to do a free bowel screening test every two years through the program. People aged 50-74 get the bowel screening kit in the mail every two years, while people aged 45-49 can request their first bowel screening kit through the National Cancer Screening Register.

Since 2017, Cancer Council Victoria has led statewide campaigns to encourage Victorians to participate in bowel screening. Our research shows having a real person's story encourages others to do their test and can start important conversations between loved ones about the importance of screening.

That's why we're looking for individuals to share their bowel screening story in 2025.

Bowel cancer survivor Laurie shared his cancer screening story with us in 2023 as part of a statewide bowel screening awareness campaign. Laurie talked about how doing the bowel screening test saved his life, ensuring he could be around for

important everyday moments with family and friends.

Laurie's story and the 2023 campaign led to more than 25,000 bowel screening tests being completed. It is estimated this will help save an estimated 115 Victorians lives over the next 40 years.

If you have a bowel cancer story, we'd like to hear it. Your story could help raise awareness about the importance of doing bowel screening and encourage others to participate through the National Bowel Cancer Screening Program.

Do you want to make a difference and help save lives? Head to cancervic.org.au/screening-story for more information.

To learn more about bowel screening and the National Bowel Cancer Screening Program, visit cancervic.org.au/bowel.

Kate Broun, Head of Screening, Early Detection and Immunisations, Cancer Council Victoria

Mental health help

The not-for-profit Mental Illness Fellowship of Australia helps people across the nation.

We have set up a key network which has become a growing community on the internet that – put simply – links people with mental health issues with others in a similar situation.

It is all about sharing experiences and it is a very powerful tool. If you know somebody impacted by mental health issues, just go to www.findingnorth.org.au

Our latest campaign highlights to all politicians in all States and Territories that time is well and truly up when it comes to the clear neglect of people facing severe mental health challenges. What deeply concerns me is that people with severe mental health issues are not getting access to community supports. These supports help them with daily living skills, housing support, employment opportunities and more. It's exactly the same situation for family carers. Frankly, it is not good enough.

We estimate a massive 230,500 Australians with high need mental health challenges are getting no access to community supports. When you factor in the carers, we are talking about a million people. It is on a huge scale.

People affected by schizophrenia have a massive 19-year gap in life expectancy compared to others. They experience significant physical ill health, time in hospital and they are at risk of homelessness and poverty.

Health Ministers need to deliver a co-funding arrangement; more community supports for individuals and families and a commitment to close the community supports gap by 2030.

It is alarming to know that three years into the National Mental Health Agreement, parties have not even agreed on a funding split. There have been numerous agreements but, in essence, a total lack of action.

If any of your readers are af-

fect by mental health issues, far and away the best thing to do initially is to sit down with your GP and plan a course of action. We know at the Mental Illness Fellowship of Australia, many people have turned their lives around by asking for help.

Tony Stevenson, CEO – Mental Illness Fellowship of Australia

Upsized Council fees

Phillip Island is billed on the official tourism website as 'being playful'.

However, locals are increasingly distressed by revenue raising measures implemented and authorised by Bass Coast Shire Council. The council could not be accused of being 'playful'.

I love living here. The island possesses outstanding surf beaches, abundant wildlife, protected sanctuaries, event spaces, cheery cafes and essential shops. The island hasn't yet morphed into a luxury resort.

In a combative Trumpian world, locals have retained their goodwill and friendliness. The playfulness and good humour of islanders was mentioned last year by The Block contestants and the show's host Scott Cam.

Benjamin Preiss's article in The Age (June 6 – Phillip Island residents asked to pay \$25,000 for road works) details council's plan for residents to pay for roads and drain installation. In some cases the cost rises to \$40,000. The current area targeted is The Esplanade between

Sunderland Bay Road and Batman Street.

I live on a small narrow Cowes street with modest houses. We petitioned the council against their decision to rip up the bitumen and return the road to gravel. But despite collecting almost 100 per cent of the required signatures, we haven't gained much traction apart from what the council calls a temporary pause.

Suggestions were made of residents contributing.

Our road has been sealed with thin bitumen called dust sealant. If our street is returned to gravel it will be muddy in wet weather and chockers with fine dust in the warmer months. The fine dust will impact asthma sufferers, children, the medically impaired and elderly.

There are no footpaths. The sealant acts as both road and footpath, providing a relatively smooth surface that gravel lacks. There will be zero access for mobility scooters/wheelchairs, cyclists, the aged, caregivers wheeling prams or residents without cars.

The council launched an Access, Equity and Inclusion in Bass Coast 2021-2025 Plan. Subsequently they should be adhering to anti-discrimination laws, including the Charter of Human Rights and Responsibilities Act – but they're not.

In short, basic human rights are being ignored by the Bass Coast Shire Council.

Lesley Truffle, Cowes



Recipients of the WBSLSC 40-year service awards, Hamish Derricks and Jason Close. Photo: Finn Moate.



Gold Medallion Award winners Erin Close, Ava Close and Ben Clark. Photo: Finn Moate.



President's Award winner Ellie Ryan with Jason Close. Photo: Finn Moate.



Club captains Jordan Kuerschner and Erin Close, with chief instructor Ellie Ryan (centre). Photo: Finn Moate.



MCs Michael Butler and Campbell Smart. Campbell was awarded a 10 Year Service Award. Photo: Finn Moate.

Club celebrates end of 2024-25 season

LIFESAVING

The Woolamai Beach Surf Life Saving Club recently held its annual Presentation Night at Silverwater Resort in San Remo.

Over 140 members and guests celebrated the club's achievements during a successful season. Club President, Jason Close said during the season nearly 250 patrolling members delivered over 10,000 voluntary patrol hours and over 26 of them achieved over 100 voluntary patrol hours.

"We performed more than 20 rescues, thousands of preventative actions, provided first aid and responded to call outs to other beaches throughout the season.

"This season saw a changing of the guard with two new Club Captains: Jordan Kuerschner and Erin Close. We welcomed new patrol captains, vice captains and junior vice captains," Jason said.

"Our members responded to some difficult remote beach call outs again this season, some of which I witnessed firsthand. I was very proud of the efforts of our members."

Jason said the club took part in the development of the Bass Coast and Mornington Peninsula Cross Council Water Safety Framework – a collaborative effort between councils, emergency services, Life Saving Victoria and the club to address drowning incidents and improve beach safety.

"We have continued to work with Life Saving Victoria, Council and Phillip Island Nature Parks to promote and improve beach safety.

"The fact that every visitor to our two patrolled beaches went home safely means that we have had a successful season," he said.

A successful fundraising campaign meant the club was now able to repair and upgrade the Smiths Beach Rescue Base.

Jason thanked the local community, Rotary Club of Phillip Island and San Remo, Smiths Beachcombers Association, Victorian State Government and Phillip Island Nature Parks for their support.

Jason also acknowledged the environmental work done by the club, planting and weeding the dunes around the clubhouse, and the success of events such as the San Remo Channel Challenge and Cowes Classic.

"Our Nippers program was also very well attended with over 400 participants at Cleeland Bight and Smiths Beach," he said.

Special patrol weekends raised awareness of Men's Mental Health (Blue Zinc Patrol) and women's contribution to lifesaving (Pink Zinc).

The partnership with Newhaven College and Bass Coast College was acknowledged, with both schools incorporating lifesaving into their programs.

This season several Newhaven College students and teachers won significant awards for their contribution to the club.

Bronze, Silver and Gold Medallions awarded

Surf Rescue Certificates and Bronze Medallions are the first awards life savers gain to become eligible to patrol the beach.

The future of life saving at Woolamai Beach is looking very bright with 62 13-14 year olds gaining their Surf Rescue Certificate and 92 teenagers as well as adults gaining their Bronze Medallion.

This makes Woolamai Beach SLSC one of the largest, if not, the largest life saving training organisations in the state, said Jason.

Twenty-five members were awarded Silver Medallions for additional qualifications relating to areas including: Inflatable Rescue Boat Driving/Crewing, Aquatic Rescue and qualifying to become a Patrol Captain.

Three members, Ava Close, Erin Close and Ben Clark received their Gold Medallions which is one of the highest qualifications in surf life saving.

Long service awards

Long time club members Jason Close, Hamish Derricks and Campbell Smart were awarded long service awards for their

outstanding contributions to the club. The awards were presented by life member Barb Webb.

Jason and Hamish began patrolling at Woolamai Beach in the early 1980s. Each has captained patrols, served the club at Board level, run the Nippers program, become life members and now have adult children who are patrolling at the club. Jason and Hamish received the club's 40-year service award and spoke of the life-long friendships, mentors and experiences they have gained during their time at the club.

Campbell Smart received his 10-year service award, highlighted by his years as Club Captain. Campbell has trained and mentored many of the current patrolling members.

President's Award

The President's Award was presented to Chief Instructor Ellie Ryan for her outstanding contribution to the training programs throughout the season.

"In her time at the club Ellie has been involved in some of the most challenging situations our club has faced, such as the Forrest Caves incident," said Jason.

"Last year Ellie was a Victorian finalist for the John Wishart Memorial Medal for Lifesaver of the Year, for her all round excellence.

"However it is in the training space that Ellie has made an enormous mark.

"Ellie has turned the training space into one which is more transparent, self-sufficient and efficient. We have also seen record numbers of courses and awards.

"Ellie has injected enormous levels of enthusiasm into our camps and courses and has changed the way Bronze camps run to make them more inclusive."

The Woolamai Beach Surf Life Saving Club awarded its 2025 Club Supporter Award to the San Remo Hotel-Motel for its outstanding support of the Woolamai Beach Surf Life Sav-

WBSLSC Presentation Night Awards

Stewart and Carole Irving Award for Most Outstanding Contribution to Nippers: Kieren Williams and Jenine Thomson

Nippers Female Champion: Zoe Brooks

Nippers Male Champion: Harvey Brown

Club Supporter Award: San Remo Hotel-Motel, The Block TV Show

Volunteer Trainer of the Year: Christos Argyropoulos

Jim Ritchie Memorial Award (Administration Award): Melanie Davies

Most Improved Member: Martin Buttery

Most Dedicated Service Award: Riley Murray and Isabel Bulach

Most Outstanding Male Cadet: Oscar Tuchtan

Most Outstanding Female Cadet: Zoe Meyer

Most Outstanding Junior Male: Kadek Humphris

Most Outstanding Junior Female: Hannah Crow

Best Volunteer Patrol: The 'Sandman' Patrol

Most Volunteer Patrol Hours: Zoe Scott

Most Volunteer Patrol Hours – Male Cadet: Thomas Crow

Most Volunteer Patrol Hours – Female Cadet: Zoe Meyer

Most Volunteer Patrol Hours – Junior Male: Bailey Lawton

Most Volunteer Patrol Hours – Junior Female: Zoe Scott

Most Volunteer Patrol Hours – Senior Male: Jordan Kuerschner

Most Volunteer Patrol Hours – Senior Female: Isabel Bulach

Excellence In Life Saving Award: Lachlan Casey

Norm Ritchie Memorial Award (Club Captain's Award): Ben Clark

President's Award: Ellie Ryan

100+ Volunteer Hours Awards: Zoe Scott, Hannah Crow, Tommy Reynolds, Kadek Humphris, Zoe Meyer, Sophia Hungerford, Willow Goodger-McGrath, Thomas Crow, Nathan Bain, Bailey Lawton, Millicent Bernardi, Mia Davies, Ryelan Van Leeuwen, Daniel Reynolds, Grace Murphy, Jack Hungerford, Riley Murray, Sienna Alldis, Ben Morley, Maya Drohomirecki, Finlay Cameron, Leah Sullivan, Jordan Kuerschner, Lachlan Casey.

Darren Adams Memorial Award (Most Courageous Rescue):

Sandman Patrol Mass Rescue: Campbell Smart, Zane Smith, Daniel Reynolds, Isabel Bulach, Lucas Atkin, Declan Lawton, Riley Murray and Max Tucker.

ing Club throughout the 2024/25 season.

This included the longtime partnership for the Channel Challenge, and providing catering and prizes for the fundraising auction night in October 2024.

"The Club is very grateful to the San Remo Hotel for its ongoing support and looks forward to continuing this great relationship and delivering the 40th Channel Challenge in early 2026," said Club Vice President, Fi Blackmore.

A spokesperson from the hotel thanked the club saying "with all the amazing work that Woolamai Beach SLSC does and will

continue to do, it is our absolute pleasure to be able to assist you in any way we can".

The club also thanked The Block for its support, including being the program's community challenge.

"The Block's support was demonstrated by an upgrade to the clubhouse, publicity generated and the ability to communicate important beach safety messages and their support of a fundraising auction night," Fi said.

For more photos, visit pisra.com.au/sport



Winners of Midweek bowls were Amanda Bozelle (2), Alan Weeden (L), Jay A.D. (3) and Louis Magri (S).



Michael Sheers (2), Bev Elliott (3), Richard Kerr (L) and Bill Sherriff (S) were the runners up of Midweek bowls.



Best One Game bowlers were John Nicholson (S), Margaret Hoy (3), Gillian Harper (2) and Tony Morris (L).

Midweek at Koo Wee Rup

BOWLS

What a great day to start back at Koo Wee Rup.

Freezing cold morning where warm jumpers were the order of the day. Tim prepared the green for all bowlers to play on and made sure everything ran without any problems.

The team was welcomed in by John who does such a great job week in and week out.

Forty-five bowlers turned up to play as well as Tony who broke a rib yesterday, but still came to watch his friends play.

Once on the green, everyone had fun as friends became adversaries for the duration of the matches. Lots of laughter as always with the occasional friendly banter being heard from the rinks.

Over the course of the day, we went from being rugged up to throwing our coats away as the day turned into what seemed like a beautiful spring day.

As always there are winners and there is the rest of us.

Winners on a magnificent score of 39 were: Amanda Bozelle (2), Alan Weeden (L), Jay A.D. (3) and Louis Magri (S).

Runners up on a great score of 37 were: Michael Sheers (2), Bev Elliott (3), Richard Kerr (L) and Bill Sherriff (S).

Best One Game winners on a score of 19 were: John Nicholson (S), Margaret Hoy (3), Gillian Harper (2) and Tony Morris (L).

A big thank you to Tim from Koo Wee Rup for all his hard work preparing the green as well as behind the bar and in the kitchen; what a great job he does.

This week we will be meeting up at Lang Lang to once again challenge friends for team of the week.

Please, be on site by 10am as the numbers are getting quite high and if you are in after the books are full then you may have to miss out. Until then, have fun and stay safe.



Newhaven College achieved an impressive second place overall in the school standings at the recent Rocky Trail Academy Melbourne Schools Championship.

Newhaven bikers shine at championships

MOUNTAIN BIKES

The Newhaven College MTB Academy made the trek to Red Hill on Friday, May 30, to deliver a strong and spirited performance at the Rocky Trail Academy Melbourne School Championship.

Twenty-five students took on the challenging course in a day full of fun, thrills and outstanding results.

Competing against schools from across the region, Newhaven riders made their mark with podium finishes in all three categories they entered.

Lucy Thompson led the charge with a commanding first place finish in the Years 7-8 Girls division, showcasing both technical skill and superior fitness.

In the Years 7-8 Boys, Maxen Mills' strong performance secured a place on the podium with a well-earned third place, while Hamish Dakers-Hock also placed third in the ultra-competitive Years 9-10 Boys category.

Thanks to outstanding individual performances and a



Podium finishers from Newhaven College are (L-R): Maxen Mills (3rd, Year 7-8 Boys), Hamish Dakers-Hock (3rd, Year 9-10 Boys) and Lucy Thompson (1st, Year 7-8 Girls).

strong team effort, Newhaven College achieved an impressive second place overall in the school standings — surpassing several schools with long-established mountain biking programs.

With momentum building, Newhaven's MTB students are already setting their sights on the top spot as the series contin-

ues, with the next event scheduled for early September in Silvan, Yarra Ranges.

These results are a testament to the success and growth of Newhaven's MTB Academy, and the dedication shown by all students was a credit to the school.

Congratulations to all riders, supporters, and coaches who made the day a success.

Winter triples competition

BOWLS

Phillip Island Bowling Club winter triples competition was held on June 3, with 14 teams entered for the first round. All competitors had to contend with wind and

regular showers with short bursts of sunshine which really tested the bowlers.

Congratulations to the first-round winners Robyn Dennis, Andy Dennis and Mick Sheers.



From left: Robyn Dennis, Andy Dennis and Mick Sheers, winners of the Phillip Island Bowling Club winter triples competition.

Tribute to Alan Lawry

At the Woolamai Beach Surf Life Saving Club presentation night last month, the club paid tribute to Alan Lawry, Life Governor.

Alan along with his brother Peter gained his Bronze Medallion at Woolamai Beach SLSC in 1965 and served the Club with distinction as a lifesaver, competitor, national surf boat

champion, Club Treasurer, Club Captain and was a friend and mentor to many.

Alan was awarded Life Membership of the Club in 1976 and then in 1991 had the club's highest honour bestowed upon him by becoming the inaugural Life Governor.

After Alan and his family moved to Queensland, he and

his wife Pam were regular visitors to Woolamai. He still found many ways to contribute and was a current member of the club's Development Fund Board.

Alan was returning to Queensland from a visit to the club when he passed away.

"Alan made an enormous contribution to the history, culture and direction of our club," said President Jason Close.

"Alan will be greatly missed by all at Woolamai."

From the table

BRIDGE

This week marked the commencement of the Winter Pairs competition, with John Farr and Bronwyn Sund emerging victorious with an impressive 61.21 per cent.

On Wednesday, the nationwide competition saw Shirley Stewart and Jill Short winning with a remarkable 65.48 per cent.

In other news, our President,

Caroline Shaw, embarked on a journey to Melbourne on Friday to participate in the Australian Bridge Federation's President's Day.

The club extends its best wishes to her and partner Jill Short for their performance in the competition.

Euchre results

Ladies winner: Leonie 6 wins.
Men's winner: Bob 6 wins.
Encouragement award went to Darrell.

TIDE GUIDE

Tidal predictions for Stony Point, Cowes -0.09 Newhaven -0.31 | HIGH TIDE IS MARKED IN BLACK. LOW TIDE IS MARKED IN RED.

WED 11 JUN	THU 12 JUN	FRI 13 JUN	SAT 14 JUN	SUN 15 JUN	MON 16 JUN	TUE 17 JUN
LOW 5:52 am 0.79 m	HIGH 12:32 am 2.44 m	HIGH 1:23 am 2.50 m	HIGH 2:10 am 2.56 m	HIGH 2:54 am 2.60 m	HIGH 3:37 am 2.62 m	HIGH 4:20 am 2.62 m
HIGH 1:14 pm 2.89 m	LOW 6:40 am 0.71 m	LOW 7:25 am 0.65 m	LOW 8:06 am 0.62 m	LOW 8:47 am 0.60 m	LOW 9:28 am 0.62 m	LOW 10:08 am 0.66 m
LOW 6:54 pm 1.48 m	HIGH 2:00 pm 3.00 m	HIGH 2:44 pm 3.07 m	HIGH 3:25 pm 3.10 m	HIGH 4:03 pm 3.10 m	HIGH 4:40 pm 3.07 m	HIGH 5:15 pm 3.03 m
	LOW 7:41 pm 1.41 m	LOW 8:23 pm 1.34 m	LOW 9:02 pm 1.29 m	LOW 9:40 pm 1.23 m	LOW 10:18 pm 1.17 m	LOW 10:56 pm 1.09 m

All material is supplied in good faith and is believed to be correct. No responsibility or liability for errors or omissions is accepted.



PHILLIP ISLAND MARINE

NEW & USED BOAT SALES

14 Beach Road, Rhyll
OPEN 7 DAYS

PH: 5956 9238

www.phillipislandmarine.com.au



Coaches Hannah and Sam celebrate the Wednesday race night success with members of the junior squad.

NAB junior race nights a great success

SWIMMING

The SGB junior squads and local swim schools participated in the NAB term two junior race nights last week at the Leongatha and Wonthaggi Pools.

Fifty swimmers took to the water to compete in races in all four strokes and Individual Medleys.

The event allows the

younger swimmers to have a go at racing in a relaxed environment and are timed as they race over 25m.

At the end of the night the swimmers went home with ribbons and certificates with their race times to compare against their term one times.

With no stroke judges, the aim of the night is to have fun, to have a go and overcome any nerves.

The event, watched on by proud parents, gives swimmers a taste of racing before they race in the upcoming Short Course meets at the Leongatha pool on June 21 and 22.

A big thank you to the local NAB branches for supporting these race nights. Their contribution covers the running costs, including the ribbons and certificates.

Results from the green

GOLF

Tuesday, June 3

Men's Comp 18H Stableford
Winner: Shane Palmer (18) 40 pts.
A Grade winner: A-1 Steve Sloss (11) 36 pts.
A-2 winner: Mark Dykes (10) 34 pts.
B Grade winner: B-1 Shane Palmer (18) 40 pts.
B-2 winner: Dennis Hackling (15) 38 pts C/B.
C Grade winners: C-1 Phil Nicholson (26) 39 pts
C-2 winner: John Daire (24) 36 pts C/B.
BDL to 34 pts C/B.
NTP: 5th Peter Gray, 7th Rickardo Meder, 10th Peter Cartwright and 17th Mark White.

Men's 9H 4BBB
Winners:
1: Ian Barker and Basil Moloney 23 pts.
2: Ralph Leditschke and David Scrase 21 pts C/B.
BDL to 20 pts C/B.

Wednesday, June 4

Women's 18H Stableford
A Grade winner: Sharon Rippon (16) 35 pts.
B Grade winner: Kym Cooper (33) 40 pts.
C Grade winner: Julia Mascitelli (34) 40 pts.
BDL to 31 pts C/B.
NTP: 5th and 17th Emma Hall, 7th Naoko McRae.

Women's 9H Stableford
Winner: Carolyn Roberts (34) 15 pts C/B.
BDL to 12 pts.

Thursday, June 5
Open 18H Stableford
Winner: Shane Palmer (17) 43 pts.
A Grade winner: A-1 Dale Gude (2) 36 pts.
A-2 winner: Scott Lethbridge (1) 35 pts C/B.
B Grade winner: B-1 Shane Palmer (17) 43 pts.
B-2 winner: Stephen Mack (16) 41 pts.
C Grade winner: C-1 Joan Nicholson (39) 42 pts.
C-2 winner: John Gains (24) 40 pts.
BDL to 33 pts C/B.
NTP: 5th Steve Sloss, 7th Paul Cashman, 10th Tom Spencer and 17th Daniel Pearce.

Men's 9H Stableford
Winner: David Scrase (38) 19 pts C/B, John Withington (24) 19 pts.
BDL to 18 pts.

Saturday, June 7
Men's 18H Stroke Monthly Medal
Winner: Greg Stewart (25) 67.
A Grade winner: A-1 Tim Duff (4) 73
A-2 winner: Adrian O'Gorman (8) 74 C/B.
B Grade winner: B-1 Heath Grace (15) 70.
B-2 winner: Rowan Wales (16) 71.
C Grade winner: C-1 Greg Stewart (25) 67.
C-2 winner: Paul Dickson (23) 73 C/B.
BDL to 76.
NTP: 5th Neville Thurgood, 7th Aaron Saric,

10th Lucas Saric.
Great score: Neville Thurgood Eagle on the 14th.

Womens18H Stableford
A Grade winner: A-1 Jan Daff (25) 33 pts.
A-2 winner: Alice Schofield (26) 32 pts.
BDL to 23 pts.

Sunday, June 8
18H Stableford
Winners: 1. Michael Coghlan (39) 35 pts C/B, 2. Giles Thompson (12) 35 pts.
BDL: to 30 pts.

Red Rocks results

GOLF

Saturday, June 7
Stroke, Monthly Medal
Winner: Ray Pobjoy (5) 55 nett.
Second: John Knee-bone (14) 58 nett C/B.
Third: Victor Petropoulos (14) 58 nett.
NTP Hole 5: Rob Stead 980cm.
NTP Hole 10: Ray Pobjoy 132 cm.
Putting Competition: Ray Pobjoy 31 putts.

Sunday, June 8
No competition due to inclement weather.

SGB Gemma Cook joins elite state training squad

SWIMMING

After swimming a PB in the Girls 12-13-year MC 50m Freestyle at the recent National Championships, s6 swimmer Gemma Cook has plenty to celebrate.

Not only did she place third, receiving her first ever National bronze medal, she has qualified with a MCPS score for Swimming Victoria Performance Pathways Program Emerging Abilities Squad.

Her coach Lorri is so proud of her efforts.

"Gemma trains so hard and has been really working on some small changes with her technique and it has made a great difference.

"I was so thrilled to be a part of her Nationals success and hear she was accepted for the Performance pathways program."

Gemma is the second SGB swimmer to be selected in one of the current Performance Pathways squads, with Archie Smyth in the Victorian Junior Talent pathway squad.

This is a dedicated program for Multi Class swimmers (s1-14) working towards Paralympics and World Championships, Deaflympics (s15) and Virtus Games (s19).

Gemma will attend dedicated multiclass training sessions in Melbourne.



Congratulations to s6 swimmer Gemma Cook who placed third with a PB at the recent National Championships.

She will also receive extra coaching sessions on stroke from Paralympic coaches, diet and other aspects of competing at a higher level, like a filmed biomechanics session in a VIS pool, and mentoring from current Paralympians.

Gemma has been training with SGB for three years and is part of the growing Multi class squads.

She loves being part of the multi-class program at

the higher level, where she gets to compete against others in the same classification as her.

There are so many opportunities and pathways for Multi Class swimmers, from all levels of school swimming competitions, local Gippsland Championships, Country Victoria, State and National Championships.

Gemma has participated in them all.

SGB masters swimmer competes in Masters Games

SWIMMING

While many of the SGB swimmers are shivering with their early starts at home in Gippsland, SGB Masters Swimmer Janice Goudie has been competing in Cairns at the Great Barrier Reef Masters Games.

Janice has recently returned to competitive swimming after a long break since competing

as a child.

She is really loving the competitions and is looking forward to racing at the World Masters Aquatic Championships in Singapore later this year.

Janice enjoyed her time in Cairns, especially experiencing racing at this higher level.

The past few months have been a huge learning curve and she will con-

tinue training locally and competing at the Masters events in Gippsland and Melbourne in preparation for the World Championships.

Results:
2nd 50m Breaststroke 4.39s PB.
5th 50m Backstroke 4.31s PB.
8th 50m Freestyle 1.82s PB.
2nd 100m Breaststroke.

PHILLIP ISLAND MARINE

BOAT SERVICING!! FREE PICK UP AND DELIVERY

Phillip Island and San Remo areas

Call 0359 569238 NOW to book in

HUGE STACER STOCK RUNOUT

HUGE SAVINGS on all Stacer / Mercury Packages

Runabouts, BowRiders, Tinnies and more IN STOCK NOW!

14 BEACH RD, RHYLL PHILLIP ISLAND

JD0330AA

Island A Grade powers past Koo Wee Rup

NETBALL

A Grade

Phillip Island's A Grade team showed real grit and skill on Saturday afternoon, battling through a tightly contested first half before pulling away to claim a 48-35 victory over Koo Wee Rup.

At halftime, the scores were locked in a close tussle, with both teams matching each other's intensity and skill.

However, Phillip Island found another gear after the break, turning on the pressure and outscoring over Koo Wee Rup to take control of the game.

The midcourt was well managed with Charli and Hallie driving play, while Lexi and Maya rotated through centre, providing fresh legs and crisp ball movement that kept the attack flowing.

Isla also stepped in to help out in midcourt, contributing some valuable support when called upon.

Ella continued her excellent form in goals, combining sharp movement with consistent accuracy to keep the scoreboard ticking over.

Aisha backed her up with calm and composed finishing.

Defensively, Hollie was strong in Goal Defence, contesting every ball and reading the play brilliantly.

Jackie was rock solid in Goal-keeper, making key intercepts that helped shut down Koo Wee Rup's attack.

This performance showcased Phillip Island's resilience and teamwork, proving they can rise to the challenge when it counts.

A fantastic result to build on for the rest of the season.

Best on Court: Ella and Hallie.

Final Score: Phillip Island 48 defeated Koo Wee Rup 35.

B Grade

In tough, wet and windy conditions, Phillip Island had a slow start against a sharp and energetic Koo Wee Rup side.

The opposition came out strong, taking early control of the game and heading into quarter time with a three-goal lead.

The Island girls found their rhythm in the second and third quarters, going on a strong run to level the scores midway through the third.

The defenders were strong, producing multiple intercepts and turnovers, while the mid-courtiers brought the ball down the court with confidence and



Phillip Island B Grade went down fighting in a great match against Koo Wee Rup.

composure.

Abbie and Meika combined well in the goal ring, keeping the scoreboard ticking over in a goal-for-goal battle.

Despite the momentum shift, Koo Wee Rup held a narrow two-goal lead at the final break and came out firing in the last quarter.

They lifted their intensity once again and managed to pull away with the win.

The Island girls held their heads high and walked away with plenty of positives to take into next week's clash against Cora Lynn.

Final Score: Koo Wee Rup 49 defeated Phillip Island 42.

C Grade

The C Grade team had an incredible win by only one point against Koo Wee Rup.

Well done girls – what a game.

Final Score: Phillip Island 19 defeated Koo Wee Rup 18.

D Grade

The D Grade girls went down fighting.

Koo Wee Rup 32 defeated Phillip Island 11.

U17

The Under 17 team delivered another commanding performance on Saturday morning, despite the rain, controlling all four quarters to take a well-earned win over Koo Wee Rup.

Phillip Island came out strong and never let the momentum slip.

Ellie ran the show through

the Centre, delivering clean, composed feeds into the attacking end.

Piper and Abbey were excellent through the midcourt, Piper using her speed and vision to open up play, while Abbey impressed with her grit, defensive pressure, and sharp passing.

Aisha was composed in goals, presenting strongly and finishing accurately, supported well by clean midcourt delivery and clever positioning in the circle.

Defensively, the Island girls were rock solid.

Olivia was strong as ever in Goal Defence, reading the play beautifully, contesting every ball, and applying constant pressure.

She combined brilliantly with Tilly, who had another standout game in the backline, pulling off key intercepts and keeping Koo Wee Rup's shooters under wraps.

Kate also stepped into Wing Defence and played her role to perfection, shutting down passing lanes and sticking tight to her player.

A fantastic full-court effort with every player stepping up and doing their bit.

This team just keeps getting stronger, well done, girls.

Best on Court: Aisha and Tilly.
Final Score: Phillip Island 35 defeated Koo Wee Rup 18.

U15, U13 and U11 reports at pisra.com.au/sport

GSL fixture at pisra.com.au



Seniors player Mark Collinson had a ripper of a game and named in the best players for the match.

Island dominate at home with big wins and nail-biter finishes

From page 32

However, Phillip Island responded just enough to maintain their lead, holding on for a gutsy one-point victory.

Final score: Phillip Island 4.3.27 defeated Koo Wee Rup 4.2.26

Best players: Ayden Fawaz, Jasper Cashman, Blake Murphy, Cha Cha Fischer, Archie Ross and Noah Forrest Mabilia.

Goals: Cha Cha Fischer, Max Taylor, Ayden Fawaz and Blake Murphy 1.

U16

It was the first wet and windy day of the season as the U16 Bulldogs took on Koo Wee Rup.

With the wind blowing across the ground, neither side gained much advantage, setting the stage for a gritty contest.

The opening quarter was a tight tussle in the slippery conditions, with a late goal from Ry Scott giving Phillip Island a narrow five-point lead at the first break.

The Bulldogs were held goal-less through the second and third quarters, but their defence stood strong, conceding just one goal thanks to outstanding efforts from Joe Kelsey and Felix Bathgate across the backline.

Trailing by three points heading into the final term, the Bulldogs dug deep.

A clutch goal from Sam



Henry Peppard showing off his skills in the Reserves match.

O'Garey with three minutes to go put the Island five points ahead.

But in a heartbreaking finish, Koo Wee Rup pushed forward in the dying seconds and slotted a goal after the siren to steal the win.

Final score: Koo Wee Rup 2.5.17 defeated Phillip Island 2.4.16

Best players: Sam O'Garey, Felix Bathgate, Levi Addison, Jack Mascaros, Archie Williams and Zane Larsson.

Goals: Sam O'Garey and Ry Scott 1.

More photos at pisra.com.au/sport

NOW STOCKING Srixon, Cleveland, Titleist and TRUE golf gear

SRIXON FITTING DAY: July 14, 11am-3pm. Free, but must book an appointment. Limited spots available – get in quick!!

'STADIUM HOLE IN 1 JACKPOT' SITS AT \$1200!!! Anyone can enter during business hours: \$10 for 6 shots – hole out and take the cash!!!

Red Rocks



Golf Club



627A Settlement Road, Cowes www.red-rocks.com.au 03 5919 0019 Call 5919 0019 to book Open 7 days with regular comps





The U18 celebrating their one-point victory against Koo Wee Rup.

Island dominate at home with big wins and nail-biter finishes

FOOTBALL

Seniors

The Bulldogs hosted Koo Wee Rup at home and came out firing, booting the first four goals of the match.

Koo Wee Rup responded late in the quarter with three of their own, but the Island held their nerve, adding another two to take a 39-19 lead into the first break.

After a firm address from coach Cam Pedersen at quarter time, the Bulldogs unleashed in the second term, piling on seven goals in a dominant display. Mark Collinson, Hayden Bruce and Pedersen were everywhere, winning possession and driving the team forward.

The third quarter saw more of the same, with another six goals added.

The Bulldogs' attack on the ball and their transition play across the ground was top shelf.

Billy Taylor celebrated his 100th senior game in style, showcasing his class with four goals.

Cam Pedersen also finished with four and Finn O'Brien, enjoying a week off from Gippsland Power due to a bye, slotted three.

With the game well in hand by the final change, the Bulldogs eased off slightly in the last quarter, allowing Koo Wee Rup to add four goals.

The Island now face a huge fortnight ahead, with back-to-back clashes against the undefeated Nar Nar Goon and second-placed Cora Lynn. **Final score:** Phillip Island 21.12.138 defeated Koo Wee Rup 11.4.70.

Best players: Cameron Peders-



Billy Taylor on fire in his 100th Senior match kicking four goals against Koo Wee Rup.

en, Hayden Bruce, Mark Collinson, Billy Taylor, Jack Huther and Finn O'Brien.

Goals: Billy Taylor and Cameron Pedersen 4, Finn O'Brien 3, Jordy Patullo, Jack Taylor and Jack Huther 2, Hayden Bruce, Charlie O'Garey, Jaymie Youle and Nick Anderson 1.

Reserves

The Phillip Island Reserves turned in a dominant four-quarter performance on the weekend, dismantling Koo Wee Rup with a commanding 96 point victory.

From the opening bounce, the Island boys took control,

moving the ball cleanly and applying consistent scoreboard pressure.

Their structure behind the ball was rock solid, allowing minimal opportunities for Koo Wee Rup and setting up wave after wave of attacking play.

Brady Ross was a clear standout, putting together a best-on-ground performance with four goals and a strong presence across the field. His composure, footy smarts and ability to hit the scoreboard were on full display.

He was brilliantly supported by Finlay Cousins, who not only slotted two goals but

worked hard all game; Ben Taylor's leadership and clean disposal; Henry Peppard's consistency around the contests; Saxon Mau's run and carry; and the composed ball use of Ethan Michaelides.

Other goal scorers included Lucas Chihotski, Brayden Kleverkamp, Harry Anderson, Jack Keating, and Bryce Pewtress in a well-rounded offensive effort.

This was a comprehensive team win and a strong statement as the Reserves continue to build momentum heading deeper into the season.

Final score: Phillip Island 15.15.105 defeated Koo Wee Rup 1.3.9.

Best players: Finlay Cousins, Ben Taylor, Henry Peppard, Brady Ross, Saxon Mau and Ethan Michaelides.

Goals: Brady Ross 4, Brayden Kleverkamp 3, Finlay Cousins, Harry Anderson and Bryce Pewtress 2, Lucas Chihotski and Jack Keating 1.

U18

Phillip Island U18 secured a thrilling one-point win over Koo Wee Rup in a tightly contested match.

The game started evenly, with both teams locked at 1.1 (7) apiece at quarter-time.

In the second term, Phillip Island managed to edge ahead slightly, going into halftime with a narrow two-point lead.

The third quarter saw Phillip Island extend their advantage, adding two more goals to take control of the match.

Koo Wee Rup mounted a fierce comeback in the final quarter, kicking three goals and nearly stealing the win.

Continued page 31

**ALEX SCOTT
AND STAFF**

Est. 1886

COWES OFFICE
113a Thompson Ave
5952 2633

144 SETTLEMENT ROAD, COWES



- Perfectly positioned in the heart of Cowes, walking distance to Cowes Primary School and main street
 - Bright & airy open plan, 2 living areas, undercover outdoor area, fully fenced backyard
 - 3 bedrooms/2 bathrooms/2 cars
- \$725,000**

1 DOUGLAS ROAD, COWES



- Charming and spacious home perfectly located just a short stroll to shops and beach
 - Amazing outdoor space featuring gazebo, outdoor fireplace and covered BBQ area
 - 4 bedrooms/2 bathrooms
- \$920,000**

**62 THE ESPLANADE,
SUNDERLAND BAY**



- Rare foreshore location with breathtaking 180deg water views and just a short stroll to the beach
 - Open plan living upstairs leading to full sized deck, indoor spa, fully fenced and secure yard
 - 4 bedrooms/2 bathroom/2 car garage/2 carport
- \$1,350,000**

SAN REMO OFFICE
127a Marine Parade
5678 5408

69 PENNIWELLS DRIVE, SAN REMO



- Stunning water views, versatile design with multiple living zones
 - Walking distance to beach and situated on a 522m² block (approx.)
 - 4 bedrooms, 2 bathrooms, double carport
- \$1,050,000 TO \$1,100,000**

31 GENISTA STREET, SAN REMO



- Two for one! Best of coastal living with 2 separate homes perfect for extra income or work studio/office on a 959m² (approx.) block
 - Stunning bay views and prime location. 5-minute stroll to township and 10 minutes to family friendly swimming beach
 - 5 bedrooms, 2 bathrooms, double lock up garage
- \$1,200,000 TO \$1,300,000**

www.alexscott.com.au

HOME DELIVERY
Call your local
newsagency

ISSN 2200-100X



9 772200 100002

PHILLIP ISLAND & SAN REMO

ADVERTISER