

PHILLIP ISLAND & SAN REMO

ADVERTISER

Your Community Voice!

Wednesday, January 26, 2022

\$1.60 Incl. GST

A very
Australian
day

At Cowes beach, Lucy Thompson, Isabelle Thornborrow, Georgia Perry, Maggie Stafford-Phillips, Mia Thompson, Rafferty Gavin-Smith, Patrick Thornborrow and Max Stafford-Phillips wave goodbye to school holidays. With high temperatures predicted and most public Australia Day events cancelled due to Covid, many will opt to spend a very Australian day at the beach or catching up for a barbeque with friends.

Parents' despair over childcare centre closure

Nurture One childcare centre in Cowes remains closed, despite assurances to parents that it would reopen this month.

In October 2021 a temporary shut-down at the centre blew out to three months, leaving families scrambling to find alternative childcare options.

At the time, parents were assured the remedial works required after the centre was flooded would take three months and the centre would

reopen in January.

However the reopening date has now been moved to March, leaving some families without childcare options for months.

"We were offered a place at Phillip Island Early Learning Centre for four year old kinder which I declined because I was told Nurture One would be reopening in mid-January, " one parent told the Advertiser.

"Which turns out, based on a num-

ber of sources, was never going to be the case and was basically a lie.

"If they had told us the truth – that they were very unlikely to reopen in January, I would have accepted the spot offered at PIELC."

Last week, the centre management wrote to parents saying, "despite our best efforts to reopen earlier, we currently estimate that the centre will reopen in March 2022."

The letter said management was working closely with the Depart-

ment of Education and the council to reopen the service, but unforeseen challenges and "delays outside our control", including Covid impacts on contractors, were behind the delay.

Families were offered alternative care options at Nurture One in Leongatha, however many say the one hour travel each way makes that option unviable.

A spokesperson for G8 Education, the company that runs Nurture One

said they understood the impact the centre's closure has had on families.

"Their disappointment and frustration is something we share and we sincerely apologise for the unforeseen delays.

"Since the centre's closure, we have worked closely with the building's owner, their contractors and other key stakeholders to gain necessary repair approvals and navigate delays to supplies from COVID-19.

Continued page 17

COWESBOAT
CARAVANRVSTORAGE

FULLY SECURED - FULL SURVEILLANCE

COWES
SELF
STORAGE

24 hr Video Surveillance

Ray White Phillip Island
56-58 Thompson Avenue, Cowes
5952 2799

A: 155 Thompson Avenue, Cowes
P: 5952 1488








SAME STORE
NEW LOOK
Huge range instore

10% off Rugs

SOUTH COAST
FLOORING XTRA

PHILLIP ISLAND

7 day weather forecast

Wed/Jan26	Thu/Jan27	Fri/Jan28	Sat/Jan29	Sun/Jan30	Mon/Jan31	Tue/Feb1
						
HUMID/PARTLY CLOUDY	HUMID/SHOWERS	SHOWER OR TWO	LIGHT SHOWER OR TWO	CLOUDY	PARTLY CLOUDY	POSSIBLE SHOWER
20 30	21 30	20 27	18 24	17 27	19 26	18 23

PHILLIP ISLAND & SAN REMO
ADVERTISER

CONTACT US:

Editorial: advertiser@pisra.com.au

Advertising: ads@pisra.com.au

Sport: sport@pisra.com.au

Classifieds: sport@pisra.com.au

Suite 2, 60 Chapel Street, Cowes, 3922.

Phone (03) 5952 3201

Fax (03) 5952 3024



Publication No. VBF 9005897
Registered by Australia Post.

Subscribe online
www.pisra.com.au

RECONCILIATION ADVISORY COMMITTEE

Phillip Island Nature Parks is calling for interested local Aboriginal and Torres Strait Islander and local community members to get involved and nominate to join its Reconciliation Advisory Committee.

The Reconciliation Advisory Committee provides a great opportunity for two-way communication between the Nature Parks and the local community to assist in delivering reconciliation objectives.

IF YOU WOULD LIKE TO BE INVOLVED:

VISIT: penguins.org.au/about/our-story/our-reconciliation-action-plan

CONTACT:

Kate Adams: kadams@penguins.org.au
0429 989 773

Nominations close Monday 31 January 2022

Phillip Island
NATURE PARKS

penguins.org.au/community

We acknowledge the Traditional Custodians of the land on which we live, work and learn, the Bunurong people. We pay our respects to their Elders past, present and future.

Fiery end to weekend

A car burst into flames when it hit a tree near the Boys Home Road roundabout in Newhaven on early Sunday morning.

Police said the car was leaving the island around 6.30am and was observed speeding along Phillip Island Road.

"It has failed to take the roundabout at Boys Home Road, losing control and striking a tree," said Acting Senior Sergeant Scott Morison of Bass Coast police.

The car then caught fire.

A police van on patrol in the area quickly reached the scene.

Police officers and nearby residents freed the two women (aged 28 and 24) from the vehicle.

The women were both unconscious and Acting Snr Sgt Morison said because of the angle the car was on, an officer stood on the side of the car, reached in and undid the seat belt and was able to pull the driver clear.

With the help of the residents, the officers were then able to get the passenger out, as flames were seen inside the driver's side door.

Shortly after the vehicle was engulfed in flames.

Traffic was diverted while police and



It was a fiery end to the weekend when a car burst into flames after hitting a tree near the Boys Home Road roundabout in Newhaven on Sunday morning.

emergency services dealt with the accident and fire.

Two helicopters, which landed on the nearby Newhaven oval, were used to airlift the

women to Melbourne – one to the Alfred and the second to the Royal Melbourne Hospital.

Both were described as being in a serious but non-life-threatening condition.

Grass fire closes entry to Churchill Island

The CFA, police and emergency services attended a grass fire near the entrance to Churchill Island last Wednesday around 1pm.

Victoria Emergency Services said there was no threat to the public, however entry to Churchill Island was blocked while crews worked on the fire.

The fire burnt through bushland between the entrance to Churchill Island and the Phillip Island Chocolate Factory, but fortunately crews were able to quickly contain the blaze.

People were asked to avoid the area.

Police were on hand to direct traffic, turning away cars that were attempting to visit the popular attraction.

Fire trucks refilled from water hydrants in Bridgeview Drive in Cape Woolamai before returning to the scenes.

Several fire trucks accessed the fire from the car park at the Phillip Island Chocolate Factory.

Crews from Phillip Island, San Remo, Kilcunda, Bass Coast, Kernot, Wonthaggi and Corinella attend.

There were minor delays on Phillip Island Road.

Weekend

Several fires were also reported across the weekend, including in Sunderland Bay.

Phillip Island Fire Brigade reported its weekend jobs included a possum stuck in a chimney on Saturday, and a burn off during



Vehicles from brigades across the shire, including this one from Wonthaggi, attended a grass fire near the entrance to Churchill Island last Wednesday.

the Fire Danger Period, as well as a serious accident in Newhaven on early Sunday morning and a rescue from the rocks near The Cape Kitchen (see separate stories).

They also supported the San Remo brigade with a smouldering tree in Newhaven on Sunday afternoon.

The Fire Danger Period for Bass Coast started on January 10 and the CFA has warned of increased grassfire conditions

this year.

According to the CFA, much of Victoria had experienced average to above average rainfall during winter and spring, and this has led to above normal pasture growth across paddocks and roadsides, which is likely to increase the grass fire risk in summer.

For details of what can, and can't be done during the Fire Danger Period, visit cfa.vic.gov.au/warnings-restrictions/can/

Solar Power Phillip Island & Surrounds



BWD Solar Pty Ltd ABN 15 621 481 696
M: 0466 746 749 E: info@bwdsolar.com.au



- Local Company
- Local Tradespersons
- Save \$\$\$ on electricity
- Residential PV Systems
- Commercial PV Systems
- www.bwdsolar.com.au

Free quotes
Tailored to suit
your energy
needs.

STC Rebates
Vic Government
Rebates

Steve Williams
Frank Bilson



M: 0466 746 749
E: info@bwdsolar.com.au
W: www.bwdsolar.com.au

LOCALLY OWNED AND OPERATED

Call for a Free Quote – Steve 0466 746 749

Cape Woolamai rescue



POLICE
BRIEFS

A broken ankle sparked a dramatic rescue operation at Cape Woolamai last Wednesday.

A man in his twenties slipped and fell while walking around the rock at the southern-most end of the Woolamai surf beach.

With his ankle severely injured, the man was unable to walk and his companions called Triple 0 for assistance.

Ambulances arrived on the scene around 5.30pm, but quickly realised the task of getting the man from the rocks back to the ambulance at the clubhouse carpark (a distance of approximately two kilometres) provided a serious challenge.

Ray Desem from the San Remo SES said they were called to help Ambulance Victoria.

He said the location of the man, at the base of the Pinnacles, meant getting him to safety would require special skills.

"There were only two options to get this person back to an ambulance – and that was by using the Helicopter Emergency Medical Service (HEMS) chopper or by using the technical High Angle Rescue Team," Ray said.

With night approaching, the rescuers were working against the clock.

"The decision was made to alert both rescue units, because if the chopper could not winch the patient, then the High Angle Rescue Team would then have to go into action."

Both the Phillip Island and San Remo SES and CFA brigades were in attendance, as well as the High Angle Rescue Team from Dandenong.

The rescue operation took several hours, with windy conditions and technical issues with the helicopter adding to the drama.

Firstly the chopper lowered a



SES, Ambulance and CFA worked alongside the HEMS chopper on a dramatic rescue operation at Cape Woolamai last week. Photo courtesy of SES Victoria.

paramedic onto the rocks to stabilise the man.

The chopper then returned and winched them both to safety.

The man was flown to the Royal Melbourne Hospital in a stable condition.

Ambulance Victoria said the man suffered a lower body injury, while police said the injuries were described as non-life-threatening.

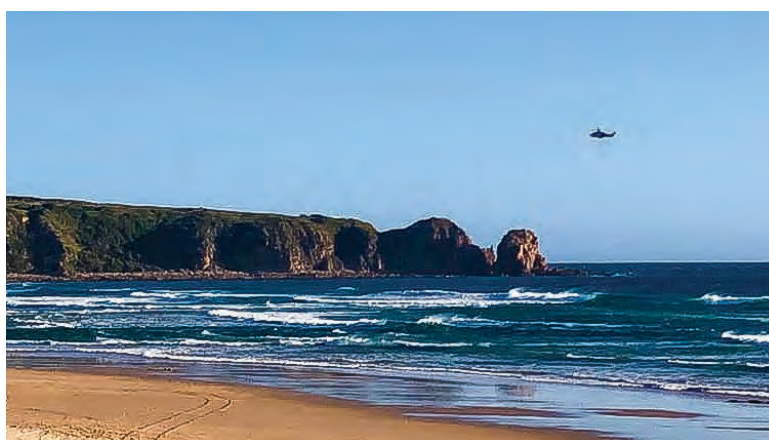
SES members were able to guide the remaining six people from the walking group across the boulders and rocks to safety.

All up, emergency services were at the site for five hours.

Forrest Caves

On Saturday, there was another accident on the rocks, this time east of Forrest Caves beach.

Police said a husband and wife were climbing up and over rocks near The Cape Kitchen when the wife slipped and fell.



Helicopter Emergency Medical Service (HEMS) chopper lowered a paramedic onto the rocks to stabilise the man, then returned to winch both to safety. Photo courtesy of SES Victoria.

The woman fell about two metres and landed in a rock pool, receiving a large laceration to the back of her head and briefly losing consciousness.

Paramedics attend the scene, and the woman was airlifted from the rocks and then transported by ambulance to Wonthaggi Hospital.

Search for swimmer

Around 1.15am on Sunday morning, police responded to reports of a missing swimmer.

A witness described seeing a male running into the water fully clothed at the end of Smiths Beach Road. When the swimmer did not re-emerge, the police were called.

Police conducted a search at the time, with a substantial search getting underway in the daylight hours, involving surf lifesavers, jet skis, drones and helicopters.

Nothing was located and with no missing persons reports, the search was called off around lunchtime on Sunday.

Parties

Police said although there were large numbers of visitors in the area, the weekend was relatively quiet. Police did respond to several complaints about noisy parties.

Australia Day road blitz

Victoria Police has launched Operation Amity targeting Australia Day traffic.

All units, including the highway patrol will be involved with the operation, including highway patrol and alcohol and drug testing vehicles.

Already 19 people have died on the state's roads this year – three times more than the same period in 2021.

Police will be targeting speed and alcohol and drugs and have stressed they will be active on lesser used roads as well as highways.

Local police confirmed motorists can expect to encounter police on the roads during Australia Day.

Don't travel to high risk areas on **Extreme Fire Danger Rating** days.

If you plan to travel through Victoria, during fire season, it's important to check the Fire Danger Rating every day. If the rating is Extreme or above, avoid travelling to high risk areas, including to cities and towns.

How well do you know fire?

Plan. Act. Survive. Go to emergency.vic.gov.au

Authorised by the Victorian Government, 1 Treasury Place, Melbourne

Carol crowned Citizen of the Year

Bass Coast Shire Council announced the winner of its 2022 Bass Coast Citizen of the Year at a presentation on Wednesday, January 19.

Carol Blair from San Remo was named the 2022 Bass Coast Citizen of the Year.

Carol was recognised for her passion to make a difference, and the contribution she has made to her community through countless hours of volunteering.

Carol has held numerous volunteer roles within the Bass Coast community including Chair of the Bass Coast Community Foundation, President of the Bass Coast Community Health Service Committee, involved in Creatively Connecting Communities Bass Coast and President of the San Remo Foreshore Committee just to name a few.

She is currently heavily involved in Women for Change, a working group and sub-charity of the Bass Coast Community Foundation which raises awareness and advocates for women and girls in our community who are facing gender inequality.

Bass Coast Mayor, Cr Michael Whelan, congratulated Carol on the award, and thanked her for her commitment to serve the Bass Coast community.

"These awards are all about recognising the contribution of ordinary Australians who go above and beyond expectations. Their achievements and contributions to our community often go unrecognised, but have a far-reaching effect" Cr Whelan said.

The Mayor acknowledged and congratulated all the nominees for the Awards: Michael Cannata from Dalyston, John Eddy from Ventnor,



Carol Blair from San Remo was named the 2022 Bass Coast Citizen of the Year.

Klaus Edel from Inverloch, Maddy Harford from West Creek, Amy Jones from North Wonthaggi, Lija Matthews from Wimbledon Heights, Liz Purvis from Wonthaggi and Graeme Sprague from Kilcunda.

"Every year it is a privilege to acknowledge the many individuals in our community who quietly give countless hours to our community across a wide range of activities and

services. Though different in their roles and contributions, these people have one thing in common, and that is they are humble and do not expect recognition" Cr Whelan said.

In recognition of their achievements, this year's Citizen of the Year received a painting by local Coronet Bay artist, Baden Johnson.

Full details of the nominees and their achievements at pisra.com.au.

Signs out but dust woes continue

Despite welcoming the newly erected signage from Bass Coast Shire Council urging people to slow down, and "speed means dust", Surf Beach and Sunderland Bay residents say a dust suppressant seal is still needed on The Esplanade.

"Although the majority of drivers are doing the right thing, there are still too many ignoring the signs which makes the dust problem impossible to live with," said Lou Pecora, who lobbied the council not to remove the dust suppressant last year.

"Only a dust suppressant seal can provide the relatively dust free environment that we were rightly accustomed to for 15 years."

He said despite hosing down his balcony just a week before, by Sunday he had swept up a cupful of dust (approximately 30gms), "which represents 1.5kg of dust per annum."

"Life has become unbearable with every external surface permanently covered in dust, and flywire screens now permanently closed as a means of stopping some of the dust," he said.

"Internal dusting is now done almost on a daily basis instead of occasionally as when the dust suppressant seal was in place."

Another resident, Andrew Gott of Sunderland Bay, has been applying a dust suppressant seal to the road at the front of his property.

He calculated it would cost under \$25,000 to apply the dust suppressant, compared to the approximately \$48,000 a year to maintain the roads.

Consultation for a Special Charge Scheme in Surf Beach and Sunderland Bay began late last year.

The road and drainage upgrade, which could potentially cost more than \$22 million, will be funded by residents' contributions and Bass Coast Shire Council.

Reaction to the start of consultation was mixed, with some residents voicing



Dust by the cupful is blowing into the houses and balconies of residents along the Esplanade at Surf Beach.

ing strong support, while others were organising to lobby council to fully fund the scheme.

Following the initial consultation period, a report outlining feedback and the potential to progress the project with detailed investigation and further community engagement will be considered at a council meeting in early 2022.

Residents have called for the council to reinstate the dust suppressant on The Esplanade (which was removed last June). Previously they asked if the dust suppressant could be maintained until the Special Charge Scheme process was completed, which could take between four and six years.

AUCTION.

29th Of January 2022 at 12pm.

(if not sold prior)



75 Veterans Drive, Newhaven

5 3 2

Beachfront Oasis

- Amazing ocean views
- 20 acres of countryside
- 170m of absolute beach frontage
- Surrounded by native wildlife
- 10 minute drive to San Remo
- Existing 5 bedroom double storey home

Josh Dunstan
0407 558 933
joshua.dunstan@obre.com.au



Emma Spencer
0460 440 141
emma.spencer@obre.com.au



52-54 Thompson Avenue,
Cowes, VIC, 3922
obrienrealestate.com.au/cowes
5952 5100

OBrien Real Estate | Judith Wright



Be A Good Sort!

Using bins inside your home or holiday house in colours that match Council's kerbside bins makes it easy to sort waste appropriately at the point of disposal.

There are many different styles of coloured internal bins available from a variety of manufacturers, so choose the style that's right for your home.

Contact Council's Waste Services Team on 1300 BCOAST (226 278) or (03) 5671 2211 or visit www.basscoast.vic.gov.au/waste for further assistance.



Every **third dose** protects **everyone** you love

Getting your third dose of the vaccine now, won't just protect you. It will help protect your entire family.

From the oldest to the youngest, getting your third dose now, means you've done everything you can to protect everyone you love from serious illness.

Find your nearest vax site and walk in, or book now.

Go to **coronavirus.vic.gov.au**



Authorised by the Victorian Government, 1 Treasury Place, Melbourne



New shire laws criticised



Proposed new local laws will be useless without proper enforcement, say community groups.

Bass Coast Shire is re-writing a vast swathe of its local laws, with a community survey open until February 13. The information gathered will then be used to draft the new local law, which will again be released to the community for feedback.

Under the revision there will be a clampdown on graffiti, dangerous dogs, electric scooters, and even e-cigarettes, as well as more protection for trees and the neighbours of badly behaved short-term holiday rentals (see separate stories).

Cowes resident and ratepayer advocate Andrew Marston said current local laws were poorly policed.

"It's all very well to make these laws and rules, but they are useless without enforcement," Andrew said.

He said illegal fireworks were part of current local laws, yet were rarely enforced.

"They created many problems this New Year's Eve. How many of the perpetrators will ever be fined?"

"And how many people have ever been fined for allowing their dog to defecate on the pavement?"

Island Voice spokeswoman Linda Marston said the revision should include strengthening the local law around unauthorised fireworks, given the concerns this holiday season.



The local law around illegal fireworks should be strengthened, given the mounting concerns about their use this holiday season, said ratepayer advocates.

"Vague"

She said it was difficult for the community to provide feedback on the shire's local law review summary of key changes because it had scant detail.

"Island Voice does not understand how council expects people to provide considered, informed comment on changes when they do not

know what they are?" Linda said.

"Many of the proposed changes identify that they will 'strengthen a section', incorporate information or 'improve clarity' but comparison is impossible if the draft text cannot be compared with the existing local law.

"The community has been given a short period of time to respond to these at a time when many

are still on holiday or going back to work. It would have been better to have had longer to respond."

She said hopefully the community will be given a "decent" period to comment on the draft before it was due to be enforced on July 25.

Island Voice's Peter McMahon agreed.

"While we are being asked to comment we don't have the full documentation," Peter said.

Peter urged the shire to be moderate in some of the proposed laws.

"I am concerned we are becoming a society governed by law enforcers. Obviously we need laws to govern but let's make sure they are reasonable."

Andrew said some areas of the revision were "vague" and needed to be better defined, such as "new provisions to address animal noise and smells".

He urged the shire to properly consult with traders if there were to be any changes to footpath trading and displaying goods for sale on the footpath, "to properly understand prevailing feelings".

Feedback

Shire Mayor Cr Michael Whelan said local laws must be reviewed every 10 years, to meet the needs of the community.

"Local Laws address local issues to improve public safety, enhance the liveability of our neighbourhoods and protect public assets," Cr Whelan said.

He said the review summary will be changed, deleted or added to.

Details: www.basscoast.vic.gov.au/locallaw

What does the current local law (2012) cover?

Camping
Road names and house numbers
Unsuitable land
Domestic waste, recycling and hard waste collections
Keeping animals, grazing livestock, adequate fencing
Shipping containers
Fireworks
Roadside and footpath trading
Smoking and alcohol zones
Motor bikes, motorised and non-recreational vehicles
Vehicle crossings
Reserves and foreshores
Burning off, lighting fires
Planting on nature strips
Road opening, drainage tapping
Building sites

What is the new local law proposing?

- Camping on private land will be regulated;

- Owners will be required to tidy up unregistered vehicles, vehicle parts, machinery, boats, caravans, trailers and other types of vehicles on private property, as well as shipping containers. Likewise for building waste and drainage;

- Property owners must keep their land graffiti free, including 'tags', but excluding permitted graffiti art;

- Where there are dilapidated and derelict buildings or dangerous structures landowners will be required to install temporary fencing whilst issues are being rectified;

- What is and is not allowed on nature strip plantings will be clarified, while unsightly or detrimental weeds must be cleaned up;

- New provisions to address animal noise and smells and new regulations for dogs that have attacked in the past;

- Address the use of electric scooters, vehicles, skateboards, and e-bikes;

- Improve the way advertising signs on private land are regulated; and

- Strengthen the definition of smoking to include vaping and e-cigarettes.



The new local laws will include changes to control short term commercial holiday home rentals.

Crackdown on short-term holiday rentals

More details need to be provided on proposed changes to new local laws impacting short-term commercial holiday home rentals.

Island Voice spokeswoman Linda Marston welcomed Bass Coast Shire's proposed new local laws for short stay accommodation, but questioned why there was not more detail on the proposals.

She said last April councillors Ronnie Bauer and Leticia Laing drafted their own Short

Stay Rental Accommodation code of conduct, based on the Mornington Peninsula Shire's bylaw which proposed car parking limits, bans on camping, publicly designated 24/7 holiday home contacts, mandated larger red bins, and funds from shire registration directed to enforcement.

"Crs Bauer and Laing raised this and presented a draft policy. Apparently, this document has been shelved since and it is now reported this matter will go out to consultants," Linda said.

"Island Voice asks why do we need to employ consultants for this? Surely council officers can network with their opposite numbers on those councils that have implemented these laws and learn what has worked well and what has required revision?"

"Isn't this what we employ council officers to do? This seems like a waste of the community's money."

Island Voice's Peter McMahon agreed.

"Island Voice made a submission to the short stay policy last year and received little response," Peter said.

The proposed new short stay accommodation local law will aim to:

- Regulate the control and use of short stay rental accommodation;
- Ensure an appropriate standard of management;
- Minimise the risk of affecting the peace of neighbours;
- Implement a registration and renewal requirement;
- Include a 'maximum stay' duration;
- Ensure any waste is managed to protect the environment.

More local laws coverage on page 10.

Council Update



Community Satisfaction Survey

From late January until mid-March, your household may receive a call from an independent market research agency, JWS Research. They have been commissioned to conduct a community satisfaction survey on behalf of Bass Coast Shire Council. Similar surveys will be undertaken across Victorian Councils in the coming months. The survey has been designed to assess the performance of Council across a range of measures to identify ways to provide improvement or more effective service delivery to residents. The survey will involve 800 interviews conducted among a representative sample of residents and non-resident ratepayers.

We appreciate you taking the time to assist us with your valuable feedback. Please be assured that your details and individual responses are confidential. Only the overall results are shared with Council. If you have any questions, please don't hesitate to contact Council on the numbers below.

Have your say on Local Law Review

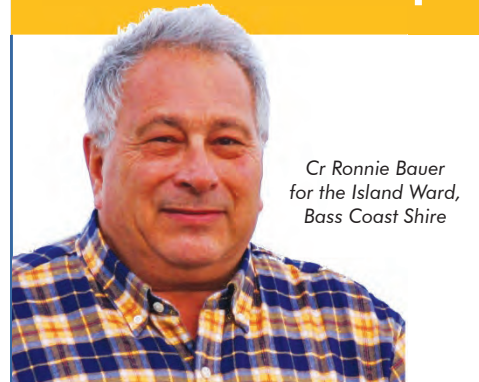
Council is currently reviewing its Local Law to ensure it continues to meet community needs. This review aims to identify what is working well, find any gaps in legislation and to create new items to address new and emerging issues.

A Summary of Key Changes has been drafted, which highlights proposed changes to the Local Law. We welcome feedback on these proposed changes, as well as anything that is in our current Local Law or anything that you think may be missing.

You can review this document, our current Local Law (2012), have your say on proposed changes and suggest any new items by visiting www.basscoast.vic.gov.au/locallaw. This draft document is available for feedback from 10 January until 13 February 2022.

Bass Coast Shire Council, 76 McBride Avenue, Wonthaggi | DX 34903 Wonthaggi | PO Box 118, Wonthaggi VIC 3995 | 1300 BCOAST (226 278) or (03) 5671 2211 or via the National Relay Service on 13 36 77 basscoast@basscoast.vic.gov.au www.basscoast.vic.gov.au

Don't hesitate to contact me, I am here to help.



Cr Ronnie Bauer
for the Island Ward,
Bass Coast Shire

PO Box 996 Cowes 3922

Tel: 0439 535 282

email: Ron.Bauer@basscoast.vic.gov.au

Authorised by Ronnie Bauer, PO Box 996, Cowes 3922

Melaleuca Lodge Auxiliary Summer Book Sale

Monday 27th December 2021 -
Saturday 29th January 2022
10am - 1pm Daily | Closed New Years Day

BILLS BOOK SHED
Watchorn Road Cowes | 0437 949 029
Gift Vouchers Available



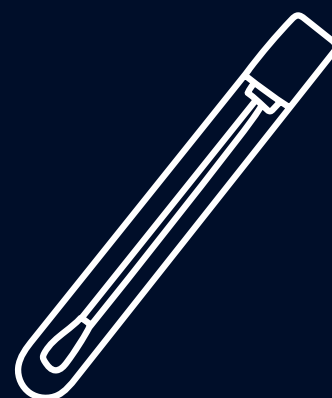
Keep up these simple things to **keep** **COVID-19** down and **out**



Wear a mask.



Keep windows
and doors open, and
meet up outdoors.



Keep getting tested
if any symptoms.

**Get your third dose now,
to protect yourself and everyone you love.**

KEEP
COVID-19
DOWN AND OUT

CORONAVIRUS.vic.gov.au

Authorised and published by the Victorian Government, 1 Treasury Place, Melbourne





Passengers on the Western Port ferry last Thursday morning received an up-close view of the world's first ship designed to transport volatile liquid hydrogen. Protestors say while this ship is small, future ships would be larger and require "catastrophic" dredging.

World first ship arrives in the bay

Protestors in Western Port greeted a world-first ship last Thursday, which was in the bay to transport volatile liquid hydrogen.

The 116-metre brand new Suiso Frontier was purpose-built for the half-billion-dollar hydrogen trial currently being carried out on the bay.

The ship departed Japan in late December and headed back to Japan after taking on its flammable LH2 load at Hastings.

Starting in March 2021, the Hydrogen Energy Supply Chain Pilot Project (HESC) is the largest hydrogen demonstration project in the world, with Latrobe Valley brown coal turned into hydrogen gas, transported to the Port of Hastings, liquefied, cooled to minus 253C, then shipped to Japan. The state and Federal governments have provided \$100 million to the cost of the trial.

The LH2 on the Suiso Frontier must be stored at a staggeringly low temperature of minus 253C — much lower than the minus 160C used for international shipments of liquefied natural gas.

The HESC Pilot project was

launched in April 2018 by Japanese company, Kawasaki Heavy Industries. The next phase of the HESC will be to analyse the pilot and determine whether it is commercially viable.

Protest

The Westernport and Peninsula Protection Council organised a protest at Crib Point last Thursday, saying while this pilot ship was very small, future ships would be massive.

"If the hydrogen trial goes commercial, future ships will be very large, requiring catastrophic dredging in order to operate from the Port of Hastings," council spokesperson Karri Giles said.

She said the HESC proponents should provide an environmental bond — "in case Western Port is negatively impacted", arguing the commercial stage must be scrapped due to threats from marine pests and dredging, as well as sourcing hydrogen from "dirty brown coal, and environmentally and economically unsound carbon sequestration".

President of the Phillip Island

Conservation Society (PICS) Jeff Nottle said the more than one million tourists who visit Phillip Island each year "do not come to see an industrial waterway".

"Heavy industries and eco-tourism do not co-exist. Phillip Island recognises that the environment is our economy," he said.

The project's proponents told the Advertiser the development of hydrogen as an "environmentally friendly energy source was critical" to Australia meeting its 2050 carbon reduction targets.

"Projects such as HESC provide an opportunity for us to lead the world in the production of low carbon energy," a spokesman said.

Confusion

Some Phillip Island residents commented online that they thought Western Port was now free from industrial threats, after AGL's proposed gas plant was last year knocked back by the government.

But PICS explained this was a "separate threat" and the next battle ground.



Signs have been placed along The Esplanade and side streets in Surf Beach, directing motorists to slow down, to try and alleviate the dust problem for residents in the area.

It's a good sign

Surf Beach residents are breathing a sigh of relief ... and hopefully less dusty air, after temporary signage was erected last week.

After a concerted campaign by residents, Bass Coast Shire Council installed the signage to help alleviate the dust issue in the area, following the removal of a dust suppressant seal on The Esplanade.

Resident Lou Pecora lobbied relentlessly for signage and a reduced speed limit.

"The framed mounted signs were agreed to as a temporary measure because they could be manufactured quickly," Lou said.

"Post mounted signs would have taken a considerable amount of

time, which would have meant not having any signs over summer."

The 32 signs include messages to slow down to 20km/hr, "speed means dust" and "shared pathway", and have been placed along side streets and The Esplanade.

On social media, residents in Sunset Strip have responded to coverage of the dust issues and the call for new dust suppressant at Surf Beach, saying they experience similar issues.

One resident said they couldn't use the front door or open windows at the front of their house.

"Dust settles on everything. It's affecting our health ... and don't talk about potholes when it rains."

FORMULA 1
HEINEKEN
AUSTRALIAN
GRAND PRIX
2022 7-10 APRIL

LIVE FAST

GRANDPRIX.COM.AU

VICTORIA
State Government

Local business, world-class service

Every popular holiday destination has hidden gems, and Phillip Island is no exception.

One such gem is not a tourism attraction; it's a world-class service delivered by a local family.

Andrew Maisey and his wife Clare run Pirtek Bass Coast, servicing all your hydraulic hose needs.

The couple moved to Phillip Island in August 2020. For Clare, the move was a return to her family farm, while for Andrew it was the opportunity to set up his own business after stepping back from a decades long career in motorsport as a lead mechanic in the Supercars and GT series.

Formerly, Andrew was looking for a career change where he could combine his expertise in mechanical and motorsport, with the demands of a growing family. The couple have two children (four years and eleven months) and the hectic lifestyle of motorsport was not compatible with family life.

The idea of setting up a Pirtek business emerged during Andrew's final years in the sport.

"I was looking for a business to retire from motorsport, when I crossed paths with Pirtek," Andrew said.

"In my experience in the high-end of motorsport, you use the best to suc-

ceed. In business it's no different and Pirtek is the biggest brand in Australia if not the world when it comes to hydraulic hoses and quality.

"The quality is in the brand. So, although we're a small family business, we are providing a high-quality product."

Setting up the business took around 12 months, and he was ready to launch just as the pandemic hit.

Andrew said it has been an "interesting" experience establishing a business during lockdown and Covid restrictions, but already companies that specialise in large or small equipment have called on his services.

With a fully equipped mobile workshop, Andrew services the entire Bass Coast region and can quickly be onsite to help when a machine blows a hose, providing a 24/7 service.

"When the hoses blow, I can be on site and repair or replace the hose and get things moving again."

But his expertise isn't just for the big guys.

"I work with smaller operators like farmers when the tractor blows a hose. Or if the power steering hose blew in your car, I can come to you. You don't have to take the car to Melbourne."

Andrew said hoses are used in many different areas and his service covers them all.

"I work with everything from marine, automotive and Plant to the beer hoses in pubs. Even the high-pressure hose you use to clean the driveway."

"Anything involved in the fluid and gas transfer business uses Pirtek Fluid Systems products and I can repair them."

"It is a specialist area, as you can't just go to a shop and buy a bit of hose. I carry a lot of fittings because every machine is different. Everything is made on site."

Andrew is hoping 2022 will see restrictions relaxed and life start to open up, so the family can properly



Andrew Maisey from Pirtek Bass Coast is delivering a world class service for all your hydraulic hose needs.



With a fully equipped mobile workshop, Andrew services the entire Bass Coast region and can quickly be onsite to help when a machine blows a hose, providing a 24/7 service.

Reputation for quality

The Pirtek Network said it has earned an enviable reputation of providing its customers with high-quality products and superior standards of customer service and support.

They respond rapidly to customer needs, because they know how critical timeliness

and responsiveness is to your business, which is why they are available 24-hours-a-day, 7-days-a-week, every week of the year.

Pirtek manages the customers' entire fluid, power hoses, fittings and associated product requirements in their workplace.



WHY PIRTEK?

- 24/7 Mobile breakdown service
- Qualified Technicians
- Hose Management, Cleaning & Tagging
- Automotive/Motor Sport Connections
- Hydraulic Hose & Adaptors
- Industrial Hose & Fittings
- Jet Wash/Wash Down Hoses & Assemblies



Andrew Maisey
Bass Coast Owner & Manager



WE'LL KEEP YOU OPERATING.

BASS COAST

0406 543 725

basscoast@pirtek.com.au

www.pirtek.com.au



Figures released to the Advertiser show 531 notices to comply were issued by Bass Coast Shire Council to landholders for unsightly land in 2021, out of a total of 653.

How many fines did the shire issue last year?

Residents with unsightly, messy land have been slapped with the most fines and warnings under Bass Coast Shire's local laws.

And despite concerns about illegal fireworks, the shire issued no fines last year.

Shire acting CEO Greg Box responded to concerns last week that existing local laws were poorly policed by community safety officers (see story on page 6).

However, figures released to the Advertiser show 531 notices to comply were issued to landholders for unsightly land in 2021, out of a total of 653.

In addition, there were 87 infringements and four official warnings issued by the shire under local laws and – aside from messy land – most of these were for abandoned vehicles, burning off and inadequate fencing.

Some of the most commonly enforced local laws were also notices of impoundment for vehicles or shopping trolleys, as well as trees and plants obscuring, or obstructions on nature strips.

Mr Box said the shire was legally required to review its local laws every decade.

"The proposed changes we are currently seeking feedback on come from issues identified by officers and our community over the last 10 years," Mr Box said.

He said as well as the local laws, community safety officers also enforced the Domestic Animals Act, which covers issues such as dog poo, dogs off-leash, in addition to elements of the Road Safety Act including parking.

He said the current review only covers the shire's local laws.

Under the Domestic Animals Act last year the shire issued 140 infringements, 65 official warnings and 163 notices to comply.

Under the Road Safety Act last year the shire issued 1926 infringements and one official warning.

"In 2021 we did not issue any fines in relation to illegal fireworks, this is also a police matter and fines may have been issued by Victoria Police," he added.



Conservationists are calling for the local law to include a permit for any work under significant trees. For example, any future development at the old Isle of Wight site will be required to create a 15-metre no-go radius to protect the historic 150-year-old Moreton Bay fig tree on the Cowes Esplanade.

Trees to be given more protection

Significant trees will be given better protection under Bass Coast Shire Council's revision of local laws.

According to the shire, there are gaps in tree protection for properties under one acre.

Under the revision they are proposing to define what constitutes a "significant" tree, such as trunk circumference, require people to obtain a permit before carrying out works such as pruning or removal, and also "ensure deference to planning provision exemptions governing vegetation removal for properties mapped as bushfire prone or

with bushfire management overlays".

Phillip Island Conservation Society president Jeff Nottle welcomed the proposed tree protection measure.

"We support the proposal to define what constitutes a "significant tree" and to require a permit before pruning or removal of any tree deemed significant," he said.

However Jeff said the local law revision should also include a permit for works on land beneath and surrounding significant trees, known as the Tree Protection Zone (TPZ).

"The TPZ, which is calculated for each individual tree using a simple formula, includes the active root zone, where works such as excavation, construction, and paving may impact upon the health of the tree."

The local law revision also includes a section on dealing with trees or plants obscuring traffic or obstructing footpaths, as well as damage caused to Council land or assets from trees and plants.

The shire is proposing to clarify what defines a danger to vehicles or pedestrians and simplify the conditions.

Wind turbines must be included in review

Planning controls on residential wind turbines must be included in Bass Coast Shire's proposed revision of local laws and must not be left in the "too hard basket", say ratepayer advocates.

In 2020 Surf Beach residents questioned why Bass Coast Shire had failed to adopt planning controls for residential wind turbines similar to those in Melbourne councils, after a resident was set to build a 10.5 metre-high turbine that required no permits (pictured).

Now the shire is revising a swathe of local laws but is yet to include wind turbines in the revision, relegating the issue to the "unsure – further conversations underway" category.

Island Voice spokeswoman Linda Marston said this was not good enough.

"If the council is unsure there needs to be better control of large-scale turbines in residential areas, then they are obviously not listening to the same community I am," she said.

"We are all aware of the distress and anger of the Surf Beach community regarding construction of such a structure."

She said the shire could be



Bass Coast Ratepayers and Residents Association said the shire in October last year promised domestic wind turbines would be considered in the local law review. Yet the shire has this month relegated the issue to the "unsure – further conversations underway" category.

leaving itself "open to questions of duty of care" if they failed to implement appropriate controls similar to other councils such as Port Phillip.

"Bass Coast Shire even developed a document of planning weaknesses in 2003 which identified the existing scheme did not address wind powered generation in residential areas at all," she added.

Cowes resident Andrew Marston said the shire in October last year told the associa-

tion that: "Council is about to commence a review of its local laws ... Regulation of domestic wind turbines will be considered as part of this review".

"It is imperative this issue is addressed and not left in the "too-hard" basket," Andrew said.

"The City of Port Phillip for instance insists that a planning permit be required for any turbine installation. If they can do it, why can't Bass Coast?"



FIRST NATIONAL REAL ESTATE

PROPERTIES URGENTLY REQUIRED

Expressions of Interest 2/2 The Esplanade, Ventnor

Luxury modern 2 storey, 4 bedroom home with magnificent views of Westernport Bay, right on the foreshore at the historic Grossard Point, Ventnor. Modern house with electrical central heating and cooling and open gas fire. The upstairs kitchen, living, dining opens out to the balcony, sit and watch the whales and sunsets, with uninterrupted views. Fully equipped modern kitchen with stone benches perfect for entertaining family and friends. Downstairs features 3 spacious bedrooms all with built in robes, separate living area, bathroom and internal access from the garage. When you've had enough of the beach you can retire to the protected sun deck off the main living area to take in the views. This property will provide the perfect beach lifestyle you've been looking for. Inspections Strictly by appointment. CALL KENDALL 0410 595 130

EXPRESSIONS OF INTEREST

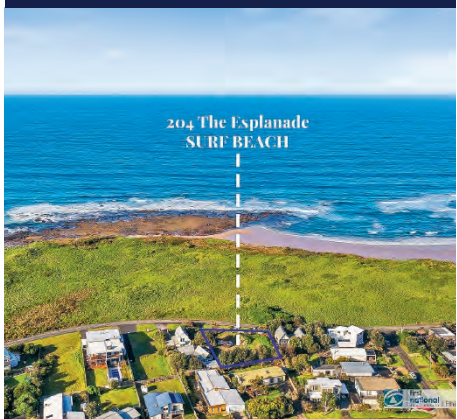


For Sale \$319,000 204 The Esplanade

Here is an opportunity to secure your own piece of absolute foreshore fronting piece of land in the most secluded and private part of Surf Beach. No crowded car parks to spoil your privacy and views. Build your dream beach home on nearly a quarter of an acre and witness amazing sunsets before marvelling at the millions of shearwaters gliding home to their burrows at dusk literally metres from your deck. Feel your toes in the sand of one of Phillip Island's best beaches within minutes of closing your front door. Enjoy a surf, swim, fishing, and endless walks all the way to the famous rock pools and blow holes at Forrest Caves beach. No need to get into the car to drive home, just a short stroll back to your private paradise to enjoy with family and good friends. Memories are made of this.

CALL MICHAEL M: 0412 712 034

IEWS, FORESHORE LOCATION



www.phillipislandfn.com.au
60 Thompson Ave, Cowes

OPEN 7 DAYS
5952 3922

Handley & Anderson

FUNERAL DIRECTORS

Servicing South Gippsland & Phillip Island

Locally owned and operated by

Scott & Sharon Anderson 5672 1074

Caring and personal 24 hour Service

Main office Wonthaggi

176 - 178 Graham Street, Wonthaggi

Cowes office (by appointment)

15 Warley Avenue, Cowes 5952 5171

Email: info@handafunerals.com.au

www.handleyandandersonfunerals.com.au

A.F.D.A.



The proposed new retail and residential building at 77 Chapel Street, Cowes, on the corner of Genesta Street, near Aldi.

New shops add to parking squeeze for Cowes

Cowes' commercial area will get a little bigger with a planning permit application seeking to build a \$1.8 million, three-storey retail shop with eight units.

The application is for 77 Chapel Street, Cowes, on the corner of Genesta Street, which is currently home to a residential house and is zoned commercial.

The permit is seeking a reduction in required parking spaces for the retail shop, at a time parking in Cowes is reaching a tipping point, with the shire this year set to introduce timed sensors in a bid to ease congestion pressures.

According to the planning permit, the proposal is required to have 15 spaces but is seeking a reduction of four.

Developers carried out a traffic report, which states there are 131 car parks within 150-metres of the site, with a spot parking survey on Wednesday, November 10 last year, at 1.30pm, showing 35 per cent of car spaces were occupied.

Nearby 77 Chapel Street, the Phillip Island Community and Learning Centre's new headquarters will be built at 16 Warley Avenue, which last year amended its plans to cater to the parking squeeze.

Initially PICAL was set to use 58 surrounding public car parks based on 154 people using the service, but after listening to objectors



Developers of the 740 square metre property assessed six trees for removal, including a mature desert ash and yellow gum.

lessened the parking requirements.

A maximum number of 70 people will use the site at any one time, which reduced the car spaces to 27.

In December a proposed five-storey, \$12 million hotel application nearby on Thompson Avenue was refused by Bass Coast Shire councillors, in part because it sought to cut 46 car parks – a waiver on half the legally required parking.

"Considering the future growth of Cowes ... the long-term parking of private hotel guests and patrons could physically not be accommodated in the public car parking during peak periods," shire planners concluded.

The 740 square metre property assessed six trees for removal, including a mature desert ash and yellow gum with tree management details required if the shire states the trees must be retained.

Everyone's a critic, but small businesses need kindly customers

The Australian Small Business and Family Enterprise Ombudsman Bruce Billson is urging people to refrain from posting negative online reviews, as short-staffed small businesses struggle to stay open.

Mr Billson says many small businesses are working hard to keep their doors open and their employees and customers safe, as we learn to live with Covid.

"Small businesses are doing their best to serve their communities, despite the challenges that come with having staff in isolation and supply chain disruptions," Mr Billson says.

"The best way to support small businesses is to be a kindly customer – patient and understanding, with good and generous intent. Small businesses are run by real people who deserve our respect and empathy.

"Negative online reviews can be devastating for a small business, particularly those that are struggling to recover from a tough couple of years. So just put the phone away. Resist the urge to give that unfair one-star review."

The Ombudsman's comments about the lasting and damaging impacts of negative online reviews, follows a submission to the Federal Government's social media inquiry calling for digital platforms to make it easier to remove fake reviews.

"Our office has assisted more than 30 businesses dealing with fake reviews in recent years," Mr Billson says.

"These so-called reviews hurt business reputations and cause significant distress to staff and business owners.

"Unfortunately, small businesses have few avenues for recourse when a fake review is posted, which is why there needs to be a transparent review system in place.

"We recommend digital platforms build tools to prevent fake reviews and be clear about the evidence small businesses need to provide to have fake online commentary reviewed and removed.

"Small business owners are under enormous strain as they work to get their businesses back on track. Fake reviews are contributing to those mental health pressures. Digital platforms should be doing more to support the small business community."



Lifestyle Communities is coming to Cowes

For almost two decades, Lifestyle Communities has championed bigger lives for our Victorian homeowners. A cohort of like-minded retired, semi-retired and working downsizers who belong to a generation that's seen more change than ever before; and possibly any to come.

With 23 communities across Victoria including six in picturesque coastal locations, we're excited to share the vision for our latest community in Cowes, positioned just 350 metres from the beach.

Information session

When Wednesday 2 February
4.00pm to 6.00pm

Where Phillip Island Golf Club
34-44 Settlement Road, Cowes

RSVP 1300 50 55 60

rsvp@lifestylecommunities.com.au

This is a COVIDSafe event so registration is essential to secure your place and be kept up-to-date with event details.

Join with the team to preview some of the initial plans, view examples of the market leading facilities at our existing coastal communities, including our multi-million dollar clubhouses and see why over 4,000 people across Victoria call a Lifestyle Community home.

Downsize to a bigger life

Q lifestylecommunities.com.au/cowes

*Image shown is of Lifestyle Communities St Leonards Clubhouse and is only indicative of Clubhouse facilities proposed for future projects.

Lifestyle
COMMUNITIES



Rallying for a great cause

Two friends are driving over 2000 kilometres to raise money for the Cancer Council.

Nathan Laurens and his friend Shaun Prestage have signed up for the 2022 Shitbox Rally, which will see them drive from Wollongong in NSW to Mackay in QLD. And the 2000 kilometre plus trek has to be undertaken in a car worth no more than \$1000.

Each team has to raise at least \$5000 and the boys – who have called themselves team Wackadoo Let's Go Cruise, are already off to a good start. To date, they've raised almost \$6000, but they've got their sights on \$10,000 and have a range of fundraising ideas to help get there.

On Saturday, January 29 the pair will be holding a sausage sizzle outside Bunnings in Wonthaggi from 9am to 4pm.

Supported by friends and family, Shaun and Nathan will be on bar-becue duty and they're hoping everyone will come down to support the cause and get a tasty snack.

"A Slice of Paradise Bakery in Inverloch is donating the bread and San Remo Butchery has donated 10 kilos of sausages," Nathan said.

Bluey

Their Shitbox Rally car will also be there – a BA Falcon proudly sporting a Bluey cartoon theme.

The two men say their kids (the pair have six children between them) love Bluey, and it attracts plenty of attention.

"It definitely appeals to kids and

most people who have kids know Bluey," said Nathan.

"Bluey is good."

He's hoping the colourful and much-loved character will catch people's eye and help with their fundraising efforts and their team name – "Wackadoo Let's Go Cruise" is also Bluey inspired.

"Wackadoo is a word they use in Bluey, and we added 'let's go cruise' because we're going on a rally."

Alongside the official fundraising page, the pair have a Facebook page where they sell team-themed stubbies and hold regular raffles.

Raffle prizes have been donated by local businesses and Nathan is hoping other businesses might join in and provide prizes for upcoming raffles.

The opportunity to sponsor the team, including having signage on the car, is also available.

"A big supporter of ours is Auto Pro in Wonthaggi. They are doing all the major mechanical work that needs to be done and giving us a sizeable discount," Nathan said.

Any business interested in helping the Wackadoo team, can contact them through their Facebook page.

Rally

The Shitbox Rally starts on May 7 in Wollongong, travels to Tibooburra and finishes in Mackay on May 13, heading off the highway and onto dirt roads.

While the rally itself is only a week, Nathan said he and Shaun will be on the road for a fortnight.



Nathan Laurens and Shaun Prestage are setting off in their Bluey-themed BA Falcon in this year's Shitbox Rally from Wollongong to Mackay, hoping to raise \$10,000 for the Cancer Council.

"We are driving to the start line, and if the car makes it, we're driving it home," he laughed.

Organisers warn the trip is not about creature comforts, describing it as a "dirty, dusty, maybe muddy and tough" adventure.

Although neither have driven a rally before, Nathan reckons cars are in his blood.

"Dad was a mechanic, and I grew up around cars."

Taking part in the Shitbox Rally was something he toyed with for years before throwing his hat into the ring this year.

"This is one of the Cancer Council's

biggest fundraisers and this rally alone will raise around \$2.5 million.

"I always wanted to do it for the cause in general, but more recently I lost my uncle to cancer, so I decided to put the team in."

"I love the fact that you have to buy a cheap car and make it go the whole way. There's a lot of bush mechanics on the way."

Despite this being his first rally, Nathan said he's feeling "pretty confident" about taking his shitbox on the road.

"As part of the event, you get put into a buddy group – and every group has a mechanic with them."

"If you break down, everyone in the group has to stop. If the car can't be fixed on the side of the road, it gets trailered into camp and then you have all night to fix it. So there are a few chances."

Preparations

With less than three months to go, the team are working hard to make sure they have all the gear they need.

After its Bunnings appearance, the car is heading to Auto Pro, while Nathan and Shaun tackle some outstanding issues: finding a car fridge and sorting the electricals so they can charge their phones and GoPro.

There's also camping equipment to be purchased.

Anyone interested in helping them out with these final preparations can contact Nathan through the Facebook page.

The team has also picked up a few tips from a Wonthaggi local who has done the rally.

"He came and saw us and gave us a few pointers, telling us the spare parts we'd need and what to expect."

"He said it's long days and a lot of driving."

"But it's not really something you can train for, so we've got to just hope for the best."

You can follow Nathan and Shaun's journey on their Facebook page: www.facebook.com/WackadooLetsGoCruise

To donate: www.autumn2022.shitboxrally.com.au/wackadoo-lets-go-cruise



Karolina and Sean Keady with baby Meila from Silverleaves were out on the weekend enjoying the carnival.



Oceaiana and Tessa from Daylston fishing for monkeys at the Island Summer Carnival.

Summer fun at the Carnival

Locals and visitors alike have already taken the opportunity to get some holiday carnival fun.

The Island's summer carnival is open every night until Saturday, January 29. A special Australia Day Fireworks

will be held on January 26 commencing at approximately 9pm. Capacity is limited and vaccination status is compulsory.



Florence from Research is here visiting her grandparents but took time out to go for a spin at the carnival.



Felicity and Finn from Research, who are visiting Felicity's parents Phil and Konney Behre from Cowes.



Australia Day

FIREWORKS

approx 9pm

FREE PARKING

Covid Safe Event

Vax Status Check

WE'RE
COVID
SAFE

Diagonally Opposite the RSL
Cowes, Phillip Island, VIC Australia

Limited Capacity So Come Early!



A growing concern: Auxiliary funds for maternity services

The Phillip Island Health Hub Auxiliary is raising funds to increase maternity services at Bass Coast Health.

The Auxiliary has secured an original painting by David Taylor and is selling raffle tickets for the chance to win the beautiful artwork.

The raffle will be drawn on January 30 at the Phillip Island Health Hub.

There is still time to purchase a ticket and go into the draw to win this magnificent painting by a local, award-winning artist.

Although Covid restrictions have hampered the Auxiliary's ticket selling options, tickets are available at the Iluka Studio Gallery, 28 Settlement Road in Silverleaves, or by calling Gill on 0431 672 777 or Wendy on 0417 245 692.

The raffle is just the first of this year's fundraising efforts by the hardworking Auxiliary team.

On Sunday, March 6, they will again be hosting the Phillip Island Health Hub Race Day at Woolamai. Last year's race day raised over \$7000 for cancer services in the local community.

Skin in the game

Last year, the Auxiliary raised money to help with skin cancer detection.

With high instances of skin cancer in



Gill Scrase (left) and Joan Gaunt (right) from the Phillip Island Health Hub Auxiliary with Dr Victoria Mar, who now has a purpose built cannister for skin cancer treatments, thanks to the Auxiliary's fundraising efforts. It is now raffling a painting to raise money to increase local maternity services.

our region, Bass Coast Health said it is now better equipped to treat lesions with the donation of new equipment from the Health Hub Auxiliary.

Renowned dermatologist Dr Victoria Mar, Director of the Victorian Melanoma Service at Alfred Health, and Associate Professor at Monash University recently joined Bass Coast Health to provide diagnosis and treatment for skin cancers and other skins conditions.

Dr Mar has already been busy treating skin lesions using cryosurgery, which involves the application of liquid nitrogen.

Until now, Dr Mar has had to hire a purpose built cannister to deliver the liquid nitrogen.

With the Phillip Island Health Hub's fundraising efforts, Bass Coast Health has purchased its own cannister and liquid nitrogen for Dr Mar to use.

The cannister has a range of nozzles to treat lesions in different places, the smallest of which can treat eyelids, and enables Dr Mar to gain accurate and safer results for our community.

"I am so grateful to receive this equipment, it is like a diamond. By treating skin lesions early on we can prevent more serious outcomes", said Dr Mar.

Gill Scrase, Secretary of the Phillip Island Health Hub Auxiliary said it was "wonderful to have someone of Dr Mar's credentials to serve our community".

"We want everyone to know that a dermatology service is available here on the island.

"The fact that we need this service is also a reminder to all of us to be sun smart over the holiday period."

If you want to make a difference for your community and join the Health Hub Auxiliary's fundraising efforts, you can contact Wendy 0417 245 692 or Gill 0431 672 777.

Raw and real beach camp

A special camp designed to help children and teenagers navigate grief is being held on Phillip Island from March 12-14.

The Raw2Raw Beach Camp is free and helps 12-to-17-year olds dealing with grief and loss from road trauma.

Margaret Markovic, creator of Raw2Roar, is hoping affected local children will sign up and join the camp.

Held at Phillip Island Camps, Raw2Roar is designed to be a fun, high-energy experience, combined with grief education and emotional support, along with beach sports and excursions to popular attractions such as the Penguin Parade.

The camp is staffed by counsellors and trained community volunteers, as well as a qualified nurse and occupational therapist.

Margaret said the camps came about after she identified the "lack of evidence based, trauma informed support/programs that recognised the unique needs of traumatised youth".

"Rebelling as a response to their trauma, loss and grief places them in an 'at risk' category," explained Margaret of the need for a specialised approach for young people.

"They are vulnerable to finding ways to make their pain go

away and detach from those close to them.

"Drugs, alcohol, truancy, risky behaviours, self-harm and homelessness are the result."

The camps offer a range of activities and an opportunity for young people to connect with others who are coping with a similar experience.

Any person aged 12 to 17 who has experienced the death of a loved one on our roads may attend Camp Raw2Roar.

Applications close on February 1 and successful applications will be contacted on February 14.

Due to limited numbers, campers will be selected on a first come, first serve basis.

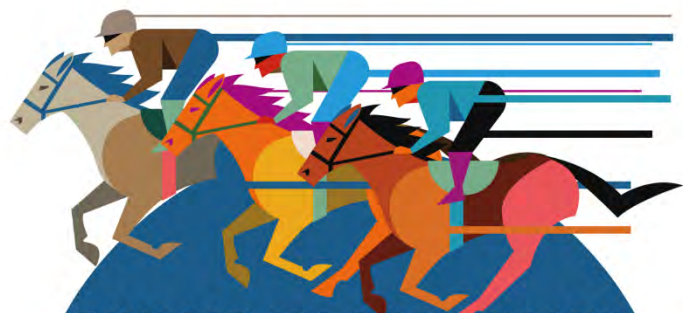
Contact margmarkovic@gmail.com or call 0412 707 623 for an information pack.

Raw2Roar is presented by Road Trauma Families Victoria, a not-for-profit organisation.

Margaret and her daughter Lisa founded Road Trauma Families Victoria in July 2012, to support families of road trauma, after dealing with their own loss when Margaret's son Daniel was killed by a drunk unlicensed driver in 2004.

rtfv.org.au/raw2roar-traumatised-teens-camp/

PHILLIP ISLAND HEALTH HUB AUXILIARY WITH WOOLAMAI & DISTRICT RACING CLUB



PHILLIP ISLAND HEALTH HUB RACE DAY
RAISING MONEY FOR IMPROVED MATERNITY SERVICES IN OUR COMMUNITY
6TH MARCH 2022
11.00 AM - 4.00PM

Bring your family and friends to the beautiful venue at Woolamai Picnic Races.

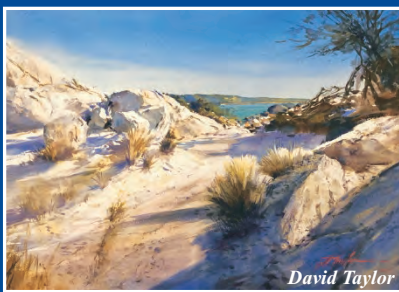
All Bookings on line www.woolamai.races.com.au

Group bookings of up to 10 will be given their own COVID-safe area to enjoy the day helping raise funds to support Bass Coast Health in improving and upgrading maternity services in our community

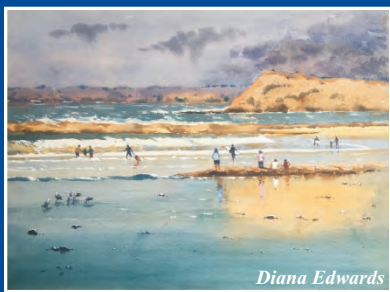
Special Moments Jan 2022

Special Art Exhibition

Opening at the Iluka Studio Gallery Silverleaves



David Taylor



Diana Edwards

Three major artists from Phillip Island

David Taylor A.W.I. F.V.A.S Diana Edwards A.G.R.A.F and Tom Tyrrell

ILUKA
STUDIO GALLERY

28 Settlement Rd., Silverleaves Phillip Island
 0427 947 889, 0418 565 796

Open each day 10am - 4pm through Jan 2022

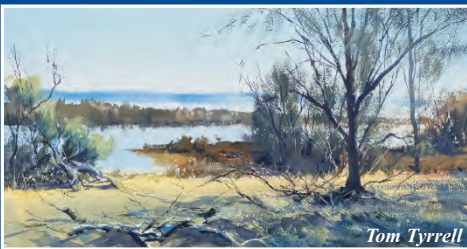
Commencing Sunday Jan 2nd 2022

Closes on Monday 31st Jan at 4pm

A chance not to miss. Enjoy.

Shared vision from recent journeys from the island, Australia and abroad.

Paintings both framed and unframed are for sale.



Tom Tyrrell

Tickets available for a special raffle of a Painting by David Taylor. Proceeds to Bass Coast Health Phillip Island Urgent Care Centre & Health Hub.

Drawn on Sunday the 30th of January 3pm Winner of the Raffle will be notified.

Cape Cruise
Spectacular scenery

Wildlife Coast Cruises

WWW.WILDLIFECOASTCRUISES.COM.AU CALL 1300 763 739

Phillip Island Seal Cruise
Playful wildlife

OFF GRID | LINE | ROAD
#GETOFFONFRENCHISLAND

NATURALISTE TOURS

Get OFF GRID, take yourself OFF LINE & venture OFF ROAD. Discover this unique, unspoilt, remote destination.... French Island. naturalistetours.com.au or call 03 5257 4570

WESTERNPORT FERRIES

Hop on over
French Island and Phillip Island

Sail to French Island, a pristine, off the grid eco destination. Perfect for nature lovers, cyclists & walkers!
westernportferries.com.au or call 03 5257 4565

LOCALLY OWNED AND OPERATED

Conveniently located at the top of town offering an exceptional range of local and Australian craft beers, wine & spirits, along with grocery, local fresh produce and more.

OPEN EVERY DAY OVER HOLIDAY SEASON - 7AM - 8PM
OPEN 7AM - 7PM ON SUNDAYS

COWES
IGA plus **LIQUOR**

Open 7 days a week, including all Public Holidays

161 Thompson Ave, Cowes

5952 1363

GRUMPY'S CRAZY GOLF

OPEN 7 DAYS

OPEN HOURS:
9 am till late 7 days a week
152 Thompson Avenue, Cowes.
5952 3060 | 0408 120 908
No weather problems - Crazy Golf is under cover!

DAILY SURF LESSONS
DURING THE SCHOOL HOLIDAYS

\$75 - 2 hour lesson - everything provided
225 Smiths Beach Rd, Smiths Beach
BOOK NOW Ph: 5952 3443

DEAD4EVA Designs

An alternative store offering signature designs, alternative streetwear, scooters, scooter accessories and tattoo studio.
Shop 2, 82-84 Thompson Ave Cowes
www.dead4eva-designs.com Ph: 0438 378 061

Watch the Little Penguins waddle home

See more & SAVE with a **4 PARKS PASS**

Includes: Penguin Parade, Churchill Island, Antarctic Journey, Koala Conservation Reserve
BOOK NOW penguins.org.au

Girls Board
PHILLIP ISLAND

All female operated surf school!
Book online: www.girlsonboard.com.au

national vietnam veterans museum

National Vietnam Veterans Museum and Café

FASCINATING FOR ALL AGES

- Holographic light & sound show.
- Audio visual interactive devices.
- Aircraft, helicopters & Centurion Tank.
- Nui Dat Café for coffee and snacks.

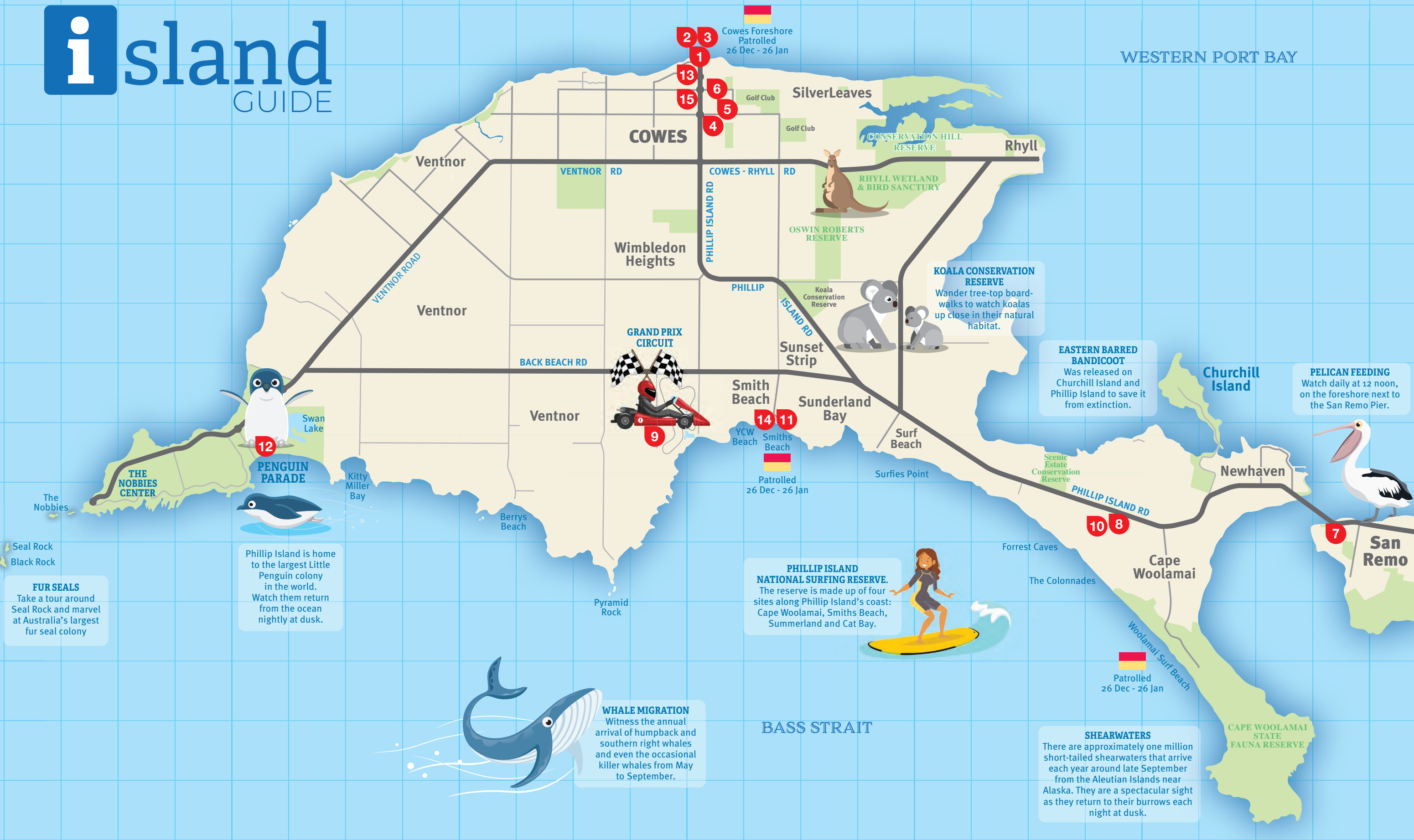
Open 7 days 10am 5pm Ph: 5956 6400

25 Veterans Drive, Newhaven, Phillip Island - vietnamvetmuseum.org

Make Tracks to the Circuit

Single & Tandem Go Karts >
Race Simulators > Merchandise >
History of Motorsport Display >
Champions Cafe >

phillipislandgokarts.com.au



clip 'n climb

ONLINE BOOKINGS ESSENTIAL

www.islandclipnclimb.com.au

Phillip Island TENPIN BOWLING
Entertainment Centre

59523977
OPEN 7 DAYS

SAN REMO CO-OP
EST. 1948 FISHERMANS

FRESH LOCAL SEAFOOD
SCRUMPTIOUS FISH & CHIPS & MORE
NEXT TO SAN REMO JETTY
170 Marine Pde, San Remo 5678 5206
OPEN 7 DAYS 10:30am-7pm

Scenic Flights Everyday

PHILLIP ISLAND HELICOPTERS

www.pih.com.au

Steptoe's gallops into 2022

Hold your horses! A host of quality pre-loved furniture has arrived at the Lions Club Yard, known as Steptoe's Emporium, in Dunsmore Road Cowes.

The current buoyant property market on the island means more houses are changing hands and more second-hand furniture is coming to Steptoe's in search of a new home.

All the proceeds from the sale of the donated furniture

goes to support the Lions Club of Phillip Island's community service projects. In 2021 many of these projects involved helping young Phillip Island school students and their families cope better during these trying times.

In addition to furniture, Steptoe's Emporium sells donated bric-a-brac, appliances and even works of art, all pre-loved of course. Recent arrivals have been a posse of rocking horses.

Great pets for the kids, they're not very expensive to feed and won't deposit a mess in bedrooms or gardens.

So, if you're after a beautiful and affordable piece of pre-loved furniture, or curio or knick-knack that will complement your kitchen, living room or patio, call into Steptoe's. Be quick before the bargains gallop out the gate. You may even be able to find that elusive piece of hardware to help complete

your latest DIY project.

Steptoe's is open on weekends, Saturday 9.30am-12.30pm and Sunday 9.30am-12pm.

Volunteers who want to help Lions Club members to sort, present or sell donated items are always welcome.

If you want to donate any items, volunteer your time, or join the Lions, call 0400 124 546, or 5900 2896 (Saturday and Sunday mornings only).



Lions Club of Phillip Island members hard at work 'breaking in' some of the recent donations are (left to right) Zoe Frost, Lucy Cerantonio, Deb Amor and Madeleine Pitt.

KEEP IT LOCAL

DIRECTORY

AUTOMOTIVE

Service Centre
Phillip Island Tyre Service
101 Settlement Rd, Cowes 5952 1480

HOME

phillip island
INTERIORS
Alicia Miran-Khan 0407 056 526
@phillipislandinteriors

BEAUTY

Mobile Hairdresser
Over 20 years experience
Claire Sunderland 0408 566 620

Interiors
bd
BRINNIE DESIGN
Interior Design & Decoration
Homewares & Gift
Shop 6, 34 Thompson Ave Cowes
btddesign.com.au

LEISURE

NEWHAVEN MARKET
SATURDAY
9AM - 2PM
12-22 School Ave, Newhaven, VIC 3925
@NEWHAVENMARKET

FINANCE

Your local bank for locals
Bendigo Bank
San Remo (03) 5678 5833
Cowes (03) 5952 3383
Grantville (03) 5678 8773

Phillip Island
Tenpin Bowling & Entertainment Centre
91-97 Settlement Rd, Cowes
5952 3977

moneytalkplanners
mortgages • insurance • super • retirement
69A Chapel Street Cowes
For appointments Tel 5952 1770

PHILLIP ISLAND MARINE
OPEN 7 DAYS
5956 9238 14 Beach Road, Rhyll

FOOD & DRINK

Burgers & Beers
Open 4pm-7.30pm
Closed tuesdays
9 Vista Pl, Cape Woolamai 5956 6552

FIRST NATIONAL REAL ESTATE
OPEN 7 DAYS
Business as usual
www.phillipislandfn.com.au 5952 3922

CO-OP
FRESH LOCAL SEAFOOD SALES
TAKE AWAY
FISH & CHIPS
OPEN 7 DAYS 10.30-7pm
ORDERS 5678 5206

OBrien Real Estate | Judith Wright
obrienrealestate.com.au/cowes 5952 5100

waterboy
— CAFE —
58 Chapel St, Cowes Ph: 5952 5765

RayWhite
Selling more properties on Phillip Island than any other agency
5952 2799
raywhitephillipisland.com.au

List your business here for only
\$17.50 per week
ads@pisra.com.au

Stockdale & Leggo
Contact us today on 03 5922 9300 New team
45 Thompson Avenue, Cowes VIC 3922 New Stockdale

NEWHAVEN MARKET
SATURDAY
9AM - 2PM
12-22 School Ave, Newhaven, VIC 3925
@NEWHAVENMARKET

Mobile Hairdresser

Over 20 years experience

Haircuts | Blowwaves | Sets | Colours
Perms | Eyebrow & Eyelash tinting
Facial Waxing | Special Occasions
Pensioner Discounts

Claire Sunderland 0408 566 620

Support the businesses at the heart of our community

Parents' despair over childcare centre closure

From page 1
“We are working hard to welcome families back to our centre as soon as possible and the building owner’s contractors are currently working to an estimated completion time-frame of March 2022.”

Bass Coast Shire Council said it was aware of the delay to reopen the centre and parents had contacted them seeking alternative care arrangements.

“We have managed to find some families placements for kindergarten, however not all,” a spokesperson said.

Local MP Jordan Crugnale has also been contacted by concerned parents.

“Whilst G8 did offer alternative sites including their childcare centres in Wonthaggi and Leongatha – the distance proved impractical to families,” Ms Crugnale said.

She advised families experiencing difficulties accessing a kindergarten program to contact the three-year-old kindergarten enquiry line on 1800 338 663.

No alternative

The promise of Nurture One operating from an alternative venue during the closure failed to eventuate.

When the centre closed last year, parents called on Bass Coast Shire Council and the state government to help find a temporary alternative location, as well as fast track repairs to the existing building.

Both the council and the education department said they were working

with centre management to identify suitable alternative locations.

In November, Amy Laws from Nurture One said “we are extremely hopeful to share news about a viable interim venue in the coming weeks”.

No alternative site was ever announced.

Last week, a G8 Education spokesperson told the Advertiser they “explored every possible temporary location with local and state authorities, however all failed to meet regulatory and health and safety requirements”.

A council spokesperson told the Advertiser that “officers previously provided the operator and the Department of Education with a number of possible sites for consideration for temporary use”.

Ms Crugnale said the department had extensive and consistent engagement with G8 at a senior level, to identify a temporary solution.

“I have been informed that the provider has indicated that they will not proceed with any alternative sites which is very disappointing, and leaves our families frustrated and children without a service.”

Both council and Ms Crugnale said they continued to raise the concerns of local families.

“From when I became aware of the closure late last year from justifiably concerned local parents, I have asked for regular updates from the Department of Education and Training,” Ms Crugnale said.

A spokesperson for the council said it did not regulate kindergartens and/



Parents say they’ve been lied to, after Nurture One Childcare Centre last week advised it would not reopen until March. The centre closed in October 2021 for repairs after flooding and was due to reopen this month.

or childcare, however it had contacted the Department of Education to “share our concern and frustration at the situation”.

Meanwhile, families and the children are bearing the cost of the centre closure.

“I feel very silly and highly stressed by the communications we received from Nurture One on the reopening,” one parent said.

“With constant reassurances that they will reopen quickly – all of which turned out to be untrue – my daughter

and her friends, and their education at this critical time, are paying the price.

“I don’t understand why more people aren’t motivated to find a solution.

“What will it take for us to get a sense that someone is actively looking for an alternative?”

Big battery raises some concerns

An online consultation session about the Phillip Island Community Energy Storage System (PICES) attracted 29 participants, including 10 from Mondo and partner organisations.

Concerns around the lifespan and disposal of the lithium battery, alternative energy credentials of the project, the noise and impact on neighbouring properties, solar capacity, funding model and fire risk were raised during question time.

The consultation session was organised by Mondo, the company contracted to deliver the project, as an opportunity for residents to find out more about the PICES.

A planning application is currently before the state government to install a 10MWh lithium iron phosphate battery at 100 Gap Road.

The Gap Road land was purchased by Bass Coast Shire Council in 2019 as a site for a future transfer station and depot.

At the time, council said only 4.5 hectares of the 45-hectare site would be needed for the transfer station.

The battery is designed to provide energy services for the island during peak consumption times.

“The island demand for energy at peak summer periods can increase by up to 40 per cent,” said Mondo’s General Manager Jodie Hallam.

“A permanent fixture can provide stronger reliability and better energy services.”

However she said it could be used to store renewable energies, and would support the goal of Totally Renewable Phillip Island to be 100 per cent renewable by 2030.

The project is supported by Totally Renewable Phillip Island (TRPI) and the Energy Innovation Coop (EIC), with representatives from both groups attending the meeting.

Project

Ishaan Anand, the project manager for Mondo outlined the timeline for the approval process and said the company hoped to have the battery commissioned between July and October this year.

He said the company had received “very positive feedback” from the Department of Environment Land Water and Planning on the application.

“They are very appreciative of the studies we have undertaken to make sure there is no impact on the community.”

Mondo engineer David Nguyen said the primary purpose for the battery was network support.

“Previously temporary diesel generators were installed and run through summer,” he explained.



This image shows a similar installation at Mallacoota.

“It works but with temperatures and costs increasing, there was the desire to be more environmentally friendly and look at other options.

“This is a permanent installation that will do the same job as the generators. And when not addressing peak energy, it can be used for other purposes, including solar trials and incentivising solar uptake.”

Running parallel to the battery installation are two feasibility studies, funded by grants from the state government.

The first study will investigate the installation of up to ten street level Low Voltage batteries (pole top batteries) in different estates, to further stabilise the island’s power and increase the electricity network’s capacity to host renewable energy.

The second funding stream will trial ways electricity tariffs can be used in combination with the PICES to provide locals ‘virtual storage.’

Application

The final approval for the battery project lies with the state government, and an application submitted to the Department of Environment Water Land and Planning includes studies that examine the ecological and visual impacts, cultural heritage, fire and bushfire plans, site groundwater, noise considerations and geo-technical studies.

Anyone wanting to review the plans or make a submission can find the application at: www.planning.vic.gov.au/permits-and-applications/ministerial-permits/browse-ministerial-permits?query=PA2101332

Submission can be made until January 28.

More information on the battery proposal (PICES) is available at mondo.com.au/community/energy-hubs-and-projects/philip-island-battery.

Battery Q & A

How long will the battery last and what systems are in place to dispose of it, given the environmental concerns around lithium disposal?

Current figures that show only five per cent of lithium batteries are recycled.

Mondo said it was unable to give a definite response but said the battery was expected to last 15 years.

“Right now in Australia there are lithium recycling programs starting up and we’re hoping in 15 years will be mature and able to be utilised for our battery system,” said Ishaan Anand, project manager.

Can the battery work off grid?

Jodie Hallam said the island was a long way from being “off-grid” but saw the battery as the first in a series of opportunities.

“We would like to be able to “island” the island,” she said.

“The battery is the first component, but to go completely off grid needs significant lifestyle changes. We are looking at a blend of traditional energy incorporated with new technology.

“The battery will provide resilience, but if powerlines are down, the battery can’t provide reliability of service.”

What will the noise and impact be on neighbouring properties?

“There are stringent night time levels of noise emissions that we have to comply with,” said Thomas Macneish from Tech C, the company installing the battery.

“The battery can operate at any time and testing will be done in relation to all requirements. Solutions will be implemented to meet those, for example a sound wall.

“The battery shouldn’t impact the neighbouring properties at all.”

The decibel range seems quite loud to me. Does the noise go 24 hours?

“This is a state-of-the-art battery and the most modern battery technology on the market,” said Felipe Kovacic from Tech C.

“It was designed by expert engineers and experts in the acoustic field. The noise at the actual site and how that propagates to other areas is different.

“It is extremely quiet in comparison to diesel generators.”

The answer was not well received. “I don’t have to worry about a diesel generator moving in down the road, so that doesn’t really fill me with any confidence,” the questioner responded.

Can solar be added to the battery?

The system has been designed to allow for expansion and that might include an expansion of solar capacity.

“The battery could be charged by solar or the grid, but initially it will be charged by the grid,” Ishaan explained.

“Theoretically you could build a solar farm next to it, change the connection and charge it from the solar farm.”

Is the project fully funded?

Mondo will own and operate the battery. AusNet will pay Mondo to provide the service, however this doesn’t cover the entire cost.

There is no comparison yet of what the tariff rate would be compared to the current consumer rate.

What is the cost of the project, and what would it cost to reach zero carbon emissions and be off the grid?

“We would need an idea of the mix of technology you are going to use (eg wind, solar, storage systems). We would have to have that combination, then we could do an analysis on that,” said Jodie Hallam.

Has a retail partner been chosen yet?
“We are at the early stages of that aspect of the project,” said Andrew Rushton from Mondo.

“As yet the short answer is no, we don’t have a retail partner. We are pursuing an EOI process, by which TRPI and EIC will go about selecting a retailer.

“That will be open to all retailers in the marketplace, so stay tuned for that.”

Will the battery stabilise the grid to Phillip Island and so improve the reliability for neighbouring communities?
“We are optimistic about the plans,” said Zoe Geyer from TRPI.

What are the fire risks?
The battery will have an inbuilt, aerosol-based fire system.

“We are working closely with the CFA, so they are comfortable with the fire risk associated with the battery,” said David Nguyen.

“Each of the batteries are in separate cabinets, reducing the chance of fire spreading if fire suppression doesn’t work.

“It will be compliant to various international standards, and there are systems monitoring each cabinet.

“Vegetation will be cleared around the site and a water source will be provided if the CFA ever need it.”

Mondo said the CFA had provided their requirements on an exclusion zone and fire vehicle access.

Planning: our future

This week's planning series looks at growth: up and out.

It's a state government requirement that councils must provide 15 years-worth of housing growth in a shire.

And with the population increasing each year, where should we accommodate that growth, how much can

Phillip Island grow before it loses its appeal, is there a tipping point?

How high, how wide should we go?

It's usually only when the next-door neighbour wants to build up or out that we start taking a loud interest in planning. Thousands of residents submit letters of objection to Bass Coast Shire each year, unhappy with planning changes proposed on their street or in their town. Add all those changes together and the cumulative impact is a changing landscape.

COMMERICAL HEIGHTS

Here are a few examples highlighting the complexity of heights in Cowes and San Remo:

- In 2019 a two-day Planning Panels Victoria hearing ruled any future development at the old Isle of Wight site should be seven storeys at the front half of the site along The Esplanade in Cowes, and five storeys at the rear half. The panel also ruled that any development at the old Warley hospital site should

be built to a maximum five storeys, which is an increase on the previous three storeys. "While the former Warley Hospital site is a 'key redevelopment site', in the panel's view it is not a 'landmark site' that may warrant a higher built form than surrounding development," the panel stated;

- In San Remo, VCAT approved the development of a four-storey 22-apartment complex with retail shops at 131-133 Marine Parade that will be 15.6m high, despite San

Remo's commercial building limit being 10.5m, with a fifth-storey penthouse now seeking planning approval;

- Last year councillors rejected a proposal for a five-storey \$12 million hotel on Thompson Avenue Cowes because it failed to suit Cowes' coastal village vibe. Objectors said the 19-metre height would dwarf the new cultural centre and overshadow other surrounding businesses such as the CWA.

RESIDENTIAL HEIGHTS

It's not only commercial areas that grapple with questions about height limits.

These are just a few of the recent neighbourhood battles fought over the issue:

- Last year 18 residents objected to a proposed two-storey development on Langard Road in Cowes, which proposed a nine-metre building, well above the seven-metre limit. Cr Ronnie Bauer moved a motion to refuse the per-

mit, saying it would "loom large from the foreshore". "We have to listen to the community and take a stand for the greater good," Cr Bauer said, saying the size of the proposed building was inappropriate for the neighbourhood. The motion was lost, with other councillors supporting shire planners in approving the building;

- Last July, two planning permits in the same Cape Woolamai housing subdivision had very different outcomes. A building proposal for 6 Homestead Mews was refused

by shire planners, as well as councillors, because surrounding neighbours would lose their views. Yet at the same meeting councillors agreed to grant a permit to a proposed building at 12 Bunya Drive which will exceed seven metres in height and attracted seven objections. Shire planners said the Bunya Drive applicant had obtained approval from the Woolamai Design Assessment Panel after objections were made.

BATTLEAXE

If we don't build up and we don't expand our town boundaries, the next best option is to squeeze everyone into existing areas on spare land available, which planners yawningly call "infill".

Councillors have for years been debating whether towns such as Surf Beach and Ventnor should become higher density, allowing large blocks to be subdivided into smaller "battleaxe" blocks, focusing development around infrastructure and making more affordable housing.

Others argue we should protect rural charm and larger blocks.

This year Bass Coast Shire will develop a housing strategy to guide the debate between urban sprawl versus infill.

As these examples show, it's complex:

- Last March 12 neighbours objected to a planning permit for 7 Hereward Close, in Cowes east, which sought to split a large block into two, measuring 602m2 and

539m2. Cr Bauer said it was an "opportunistic" subdivision and residents had bought into the area because of the ambience of the large block sizes. "We need to send a message to developers about being sensitive to the aesthetics of an area," he said. Cr Rochelle Halstead said the permit was "indicative of what is happening across Bass Coast Shire", with current guidelines allowing battleaxe blocks.

"It is a catch-22 in that the state requires local governments to provide housing. So therefore we're limited in our capacity to provide that extra population without reducing block sizes. I think there needs to be a balance," she said;

- In December 2020 councillors approved plans for a battleaxe development at Highview Crescent, Surf Beach, despite strong arguments against it. The plans were for a single storey home at the rear of an existing two storey dwelling on a 892m2 block. Councillors voted to approve the plans because they believed if they rejected them, any appeal to VCAT would simply

approve them. Cr Clare Le Serve voted against the plans. "Until we get the infrastructure right, infill is not the way to go," Cr Le Serve said, adding the planning scheme needed to be changed to stop plans such as these. "We potentially double the population with no service provision.;"

- Councillors in April 2019 voted to reject a three-lot subdivision at 524 Ventnor Beach Road in Ventnor – despite planners recommending approval – hoping to send a clear message to developers that buildings should have open space. However, VCAT later approved the subdivision. Cr Bruce Kent said he believed the subdivision should be refused because this area of Ventnor had a "rural feel" and "I'd hate for Ventnor to lose that". "I've always said just because we are first to live here, that doesn't eliminate the right of other people to come to the island, but we have to protect why people come here in the first place," he said. "I can see by approving this development we start to lose what these areas represent."

TOWN BOUNDARIES

All eyes will be on the state government's Distinctive Area and Landscapes (DAL) project when community consultation starts early this year (see separate story).

The DAL will look at growth for the next 50 years but may or may not suggest town boundaries, while the government can override the community in deciding whether town boundaries are expanded or not.

According to shire planners, some developers are holding off on advancing housing subdivision plans until the DAL is finalised.

These are some of the large land holdings that are in the spotlight when it comes to expanding current town boundaries:

- A parcel of land at the back of the 18th hole of the Phillip Island Golf Club, east of Coghlán Road, had an old conditional approval

dating back before 2000, at the time called the Lechte development. Cr Michael Whelan last year said the planning rules around this land were vague and needed to be clarified to prevent urban sprawl: "The previous council knocked back other proposals in the Rhyll Inlet area. It's an area that is a distinctive landscape and needs to be protected," he said. "The DAL is the best opportunity we have had to influence the future of Cowes, to contain the sprawl ... The bottom line is that we want to see township boundaries protected.;"

- Bushland near Toscana Rise in Cowes west, near Red Rocks Road around Saltwater Creek, had another vague historic development proposal that needed to be clarified, Cr Whelan said. "We have to have a certain amount of infill in Cowes but we need to be asking what level of development we want in Cowes. Do we want to be Pakenham?;"

- In 2016 the Cape Woolamai Community Association was formed to protest against any future development on the airport site at Newhaven, after council received a planning scheme amendment application to rezone the airport site from farming zone to general residential zone, as well as an application to apply a development plan overlay to allow for residential subdivision on the site. There have since been no further planning developments on the site, home to Phillip Island Helicopters;

- In 2017 residents in Newhaven received a letter from planners representing owners of a parcel of land at the back of the Chocolate Factory, seeking to rezone the land to make way for a future possible housing subdivision. There have been no further developments since.



Wonthaggi has been identified as a centre for growth in Bass Coast Shire, with the overall shire population predicted to reach 46,439 by 2026.

Population growing

According to Bass Coast Shire's council plan, between 2016 and 2026 the population is expected to grow from 33,311 to 46,439.

"This growth is likely to bring economic benefits and increased services, however, it may also present challenges such as a perceived loss of community and 'small town feel' which may have attracted many residents," the council plan states.

It states that planners need to prepare for growth while at the same time defining town boundaries and

"ensuring the intrinsic values and character of Bass Coast are retained".

Bass Coast Shire's planning manager Donna Taylor explained it is a state government requirement that each shire plans population growth for 15 years in advance.

"It's state policy and what we have to do. We need to provide clear direction where that growth will be located," Donna said.

"Wonthaggi is identified as a centre for growth and Cowes and Inverloch support that."



A discussion paper for the DAL stated the main challenges facing Phillip Island included congestion and local infrastructure pressures during peak periods.

What is DAL?

The delayed last round of consultation on the state government's Distinctive Area and Landscapes (DAL) project, to guide future land use on Phillip Island and Bass Coast, is set to begin early this year.

The first round of community consultation on the DAL was in 2018, when residents sent a loud message there was too much development pressure on Phillip Island and San Remo, and growth should be managed.

The second round of consultation in 2019 saw the release of a discussion paper, which stated the main challenges facing Phillip Island were congestion and local infrastructure pressures during peak periods, urban development de-

mand, and climate change threats to the environment.

The paper proposed a number of controls to protect the area, including ensuring new housing designs that fit town character, beautiful views be safeguarded, green breaks be increased between townships, avoid sprawl along the coast, while urban development close to high-value ecological areas should be restricted.

The third and final round of consultation will focus on the most important document of all, a draft Statement of Planning Policy (SPP), which will be enshrined in law.

The SPP aims to protect our best features and lock in town boundaries.



PLANNING: OUR FUTURE

What's our game plan?

A series of weekly columns on planning issues by Island Voice

Demand for housing on Phillip Island is increasing significantly.

If our planning scheme does not protect the special factors that make Phillip Island unique then we risk becoming another Melbourne suburb with large houses on small blocks and no gardens. But with penguins.

Is this appropriate for Phillip Island?

How many houses, people and cars can be accommodated on Phillip Island without destroying its uniqueness or expanding town boundaries?

Height of buildings is an important consideration because research shows people living in areas with poorly planned tall buildings have less sense of community and poorer health.

In fact, many European cities limit suburban residential building heights (such as Berlin, which has a five-storey limit) to prevent this.

The Bass Coast Planning Scheme controls this by applying height limits for different zones.

I always thought these limits were mandatory, but it seems that they are more like recommendations, with developers applying for waivers that are assessed on each case.

Island Voice believes height limits should be mandated maximums, granting waivers only for buildings of great community value, such as the community hospital or the Vietnam Veterans Museum's hangar for restored warplanes.

Ensuring that there is no wiggle room with a mandated height makes it easier to enforce the rules by removing grey areas and makes it easier to defend decisions at VCAT.

In contrast, infill occurs when existing single house blocks are sub-divided to build multiple residences.

This is a common way to increase housing within town boundaries but, without careful planning, can result in a lack of supporting infrastructure – such as schools, hospitals and parking – for the increased population and can reduce amenity and local character.

The planning scheme simply refers to infill without defining what it should look like.

By contrast the Surf Coast Planning Scheme contains specific guidelines:

"Maintain the existing character typified by dwellings predominantly of single and double storey scale," Surf Coast's planning scheme states.

"Retain and enhance existing vegetation, including canopy trees, with a mixture of traditional coastal and indigenous species to strengthen the visual connection of the area with the coast."

"Maintain consistent setbacks

from the front and side boundaries."

There is a huge demand for more houses on Phillip Island but how many should we build?

The Surf Coast Planning Scheme quantifies housing densities very clearly – "achieving a density of 15 dwellings per hectare" – making it very easy to determine when densities are exceeded and providing clear guidelines for developers and planners.

Unfortunately, the Bass Coast Planning Scheme is not as clear.

Battle-axe blocks are a common feature when dividing existing blocks.

Bass Coast mentions them once: "Discourage the creation of 'battle-axe' allotments."

By contrast Surf Coast mentions them 14 times, ensuring each block is of a reasonable size, common driveways are not counted as part of the area of a block and ensuring shared driveways in subdivisions do not run straight, preventing a gun barrel effect and adding interest.

Island Voice would like to see the Bass Coast Planning Scheme address such blocks in greater detail.

Demand for more housing inevitably leads to calls to subdivide larger lifestyle blocks.

Island Voice would suggest that as these were marketed to, and bought by, people who expressly wanted to live in an area with lower population density, they should be protected in planning schemes from subdivision unless the vast majority of owners in the development agree.

Another critical issue is dependent persons units, which are intended to provide temporary accommodation for people who need support and are removed when they move or die.

Being temporary in nature, they do not require a permit in the current scheme.

Given our ageing community, this is likely to be a growing requirement and needs to be monitored to prevent legacy buildings remaining in place.

Island Voice would suggest dependent persons units should require a permit, with an annual check on the occupancy of such a building and including requirement for parking provisions to cover extra vehicles.

Such a provision would prevent dual occupancy on blocks that are not formally subdivided.

As you can see, other planning schemes have been tailored to ensure appropriate development for special places.

Island Voice believes Phillip Island deserves such treatment and we will continue to advocate strongly for this.

But council needs real community feedback to understand what we want in our planning scheme.

Get involved and make your voice count.

Planning anger on social media

"Such buildings that you think you have a right to build here are incongruous to the environment and local community amenities and surrounds."

"People moving here should get to know the place, the community,

the international RAMSAR treaty protecting our biosphere, laws on land development and building restrictions. This is not Surfers Paradise."

- Resident, Phillip Island Community Noticeboard, Facebook



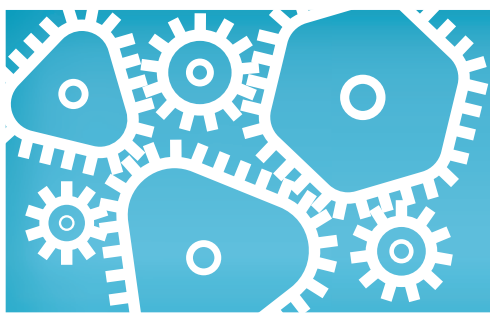
Any future development on the old Warley hospital site will be built to a maximum five storeys.



Councillors have for years been debating whether towns such as Surf Beach and Ventnor should become higher density, allowing large blocks to be subdivided into smaller "battleaxe" blocks.



A parcel of land at the back of the 18th hole of the Phillip Island Golf Club, east of Coghlán Road, has an old conditional planning permit approval. A councillor says rules around this land were vague and needed to be clarified to prevent an expansion of town boundaries.



Business Guide

LOCAL TRADES AND SERVICES

AIR CONDITIONING

ALWAYS COOL
AIR CONDITIONING
HEATING & COOLING SPECIALISTS
1800 931 631
www.alwayscoolair.com.au
Pic lic 45137
Au 34551

BLINDS & CARPET

A: 156 Thompson Avenue, Cowes
T: 5952 1488
south coast
furnishings
SOUTH COAST
FLOORING XTRA
W: southcoastfurnishings.com.au
E: sales@southcoastfurnishings.com.au

CARPET CLEANING

**COAST 2 COAST
CARPET CLEANING**
• Carpet • Rugs • Deck • Floor Tiles
• STEAM CLEANING
• Truck mount machine
Glen: 0405 415 133
Email: coast2coastcc@hotmail.com

DECKS & VERANDAHs

ISLAND DECKS Specialists in all types of decks and verandahs
LX00059AA
REGISTERED Building Practitioner
John Johnston 0414 714 179

AIR CONDITIONING

CLAIM UP TO
\$1000 CASH BACK!
WITH OUR **HEATING & COOLING**
AUTHORISED GOVERNMENT REBATE
CITY TO COAST AIR
WONTHAGGI
Your split system & ducted experts!
Shop 1/13 Inverloch Rd, Wonthaggi
0400 001 465
AU39230 JD00514AA *Government rebate T&C's apply

BUILDER

EXTENSION & RENOVATION
SPECIALIST
KITCHENS, BATHROOMS
AND DECKS
OVER 35 YEARS
OF EXPERIENCE
ISLAND
DESIGN & BUILD
0417 503 003
ROB NORTON
INSURED & LICENSED BUILDER DB-U 61563

CLEANING

eighth element www.eighthelement.com.au
• Airbnb & accommodation
cleaning
• Linen service
• Commercial cleaning
• Vacate cleans
Sharon Elliott
0421 665227
email: info@eighthelement.com.au

EARTHMOVING

**NEAL McRAE
EXCAVATIONS**
• 10m³ tippers • Bobcat
• 4 ton excavators • Post hole borers
• Driveways • Rubbish removed
• Quarry materials supplies • Blocks cleared
611 Ventnor Road, Cowes
0418 383 881 - 5956 8615
Email: nmcray@waterfront.net.au
JO0013AA

AIR CONDITIONING

COASTAL
REFRIGERATION & AIR-CONDITIONING
03 5678 5190
office@picra.com.au
Coastal Refrigeration
and Airconditioning
AUS1426
COMMERCIAL & DOMESTIC
SERVICE, INSTALLATION, MAINTENANCE AND SALES

CARAVAN REPAIRS

REPAIRS & DETAILING OF
CARAVANS & MOTORHOMES
SOUTH GIPPSLAND
CARAVAN REPAIRS
Glen Marshall
0405 415 133
• ALL MAKES AND MODELS
• CUT AND POLISHING
• SERVICING SOUTH GIPPSLAND
JD0028AA

CONCRETER

**MARK ATLEY
CONCRETING** EST.1983
'THE DRIVEWAY SPECIALISTS'
• Exposed/Patterned
• Coloured or plain
• Drainage solutions
31 Reid Street, Rhyll. 3923
Ph: 0418 105 262
LK00039AA

EARTHMOVING

Bobcat/Excavator Tipper Hire
All aspects of earthmoving, driveways,
drainage and landscaping
Rubbish removal
0418 418 615
Servicing all Phillip Island areas
Ray's Skip Hire
+ Earth works
LK00032AA

AIR CONDITIONING

southcoast air
Air conditioning
& refrigeration
Cooling & heating specialists
Split system sales & complete installation
Service, repairs Electrical contractor
0402 044 377
Dave Miller
PIC. 43216
L109866 REC26099

CONCRETER

CONCRETE AND EXCAVATION SERVICES
JAK
CONCRETE &
EXCAVATION
• Exposed Aggregate
• Slabs & Foundations
• Driveways & Paths
• Commercial Concreting
• Excavation
• Landscaping
• Retaining Walls & MUCH MORE
CALL FOR A FREE QUOTE!
Adam 0423 647 805 Nancy 0402 930 876
JD00419AA

ELECTRICIAN

**JACKSON ELECTRICAL
& AIR CONDITIONING**
• Reliable & fully insured
• Split system installers
• All types of electrical services
• Air conditioning sales and service
• TV Antenna & data
• Free quotes
• Hot water systems
• Ovens and cooktops
CALL MICHAEL 0427 633667
CAPE WOOLAMAI REC 17893 LIC. 48834
JO0068AA

BLINDS/AWNINGS

*Creative Blinds
&
Awnings*
FREE MEASURE & QUOTE
Mobile Showroom
Peter: T/F: 5952 5092 M: 0417 358 650
LK00027AA

CAR REMOVAL

**BASS HWY CAR
REMOVAL**
UNWANTED CARS
& SCRAP METAL REMOVED
FREE
7 DAYS A WEEK
CALL SHANE
0407 599 616
OR 5678 2002
JD00562AA

CONCRETER

**RAY MATTOCK
CONCRETING
AND EXCAVATIONS**
• Exposed aggregate paving
• Coloured - Slate - Brick paving
• House slabs - Garages
PH: 5952 3853 FAX: 5952 5103
Mob: 0418 560 202
LK00039AA

EQUIPMENT HIRE

ISLAND EQUIPMENT HIRE
>>> Service & Repairs <<<
• Short & Long term
hire available with
mechanic onsite
for service & repairs
20 The Concourse • Cowes
www.islandequipmenthire.com.au
0417 820 565
LK00031AA

ADVERTISING

To advertise in the
**Business
Guide**
CONTACT JANE ON
5952 3201 OR EMAIL
ADS@PISRA.COM.AU

CARPET CLEANING

**ISLAND
CARPET CLEANING** EST1981
• Extreme heat extraction - Rapid Dry
• Commercial - domestic - upholstery
• Rental bond specialists • Fast, efficient service
RICHIE & DI LAING
0415 106 443 5956 6888
richandi@hotmail.com
JD00122AA

CONCRETER

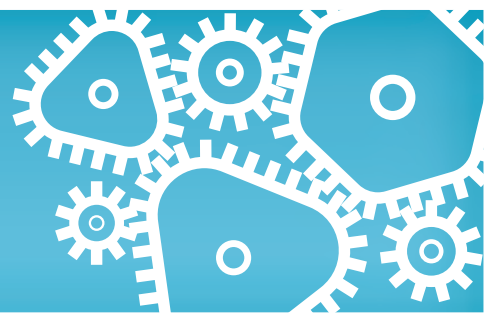
**TIM NEWMAN
TNC
CONCRETING**
• Exposed aggregate • House slabs
• Driveways • Footpaths • Sheds & garages
• All concreting needs
Tel/Fax 5956 8791
RMB 2180 Ventnor 3922 E:newman@waterfront.net.au
0419 312 805
LK00046AA

GLASS

**BETTSY'S
GLASS**
Glazing the Island and district
LEWIS BETTS A.B.N. 37 053 127 216
• Residential locksmithing & key cutting • Flyscreens
• Shower screens • Re-glazing • Security doors • Glass balustrading
PH: 5952 3555 MOB: 0421 839 206, FAX 5952 3444
Factory 2/221 Settlement Road, Cowes
sales@betssysglass.com.au
LK00012AA

Business Guide

LOCAL TRADES AND SERVICES



GLASS

Phillip Island
GLASS WORKS
'when quality counts'

- Reglazing ■ Showers ■ Mirrors
- Splashbacks ■ Balustrading

Darren Anderson
Factory 1/110 Dunsmore Rd, Cowes
5952 5570 0419 525 588

LK00036AA

PEST CONTROL

PHILLIP ISLAND PEST CONTROL
OFFERING FIVE STAR FRIENDLY SERVICE

★ ★ ★ ★ ★
COMPETITIVE PRICES
Mobile: 0419 543 637

Treatment of all pests

- Termites • Rodents • Fleas • Bees
- Cockroaches • Spiders • Wasps
- Soil treatments • Red Stop Barriers Installed

23 years experience
ALL WORK GUARANTEED

LK00036AA

ROOFING

SOUTHERN METAL ROOFING
Metal Roofing Specialists

- Domestic & Commercial • Repairs
- New Installation & Renewals • Maintenance
- Fascia, Gutters & Downpipes
- Aluminium Gutter Guard • Metal Wall Cladding

M: 0431 044 485 E: chrissavona@yahoo.com.au
Lic No 40950

LK00160AA

TREE SERVICES

SILVERBACK TREE SERVICES
Specialising in tree Pruning & Removal

Competitive rates Firewood
Total tree removal Storm cleanup
Mulch sales Lot clearing
Hedging Hazardous limbs
Pruning

Call now for a free quote
0491 032 999

JO01252AA

GUTTER CLEANING

GUTTER-VAC
Clean. Safe...Easy

Vacuum gutter cleaning,
gutter guard, solar panel cleaning,
ceiling cavities cleaning.

0427 393 291
swgippsland@guttervac.com.au

JD5840

PLASTERING

WONTHAGGI plaster
& Construction Supplies

T: 5672 1535 F: 5672 3786
42 INVERLOCH ROAD, WONTHAGGI
wonthaggiplaster.com.au

CEMENTEL GYPROCK CSR NATIONAL MASONRY EARTHWOOL

LK00036AA

STEEL

C&K WELDING & FABRICATION
MILD STEEL, STAINLESS STEEL,
ALUMINIUM AND METAL FABRICATION

C&K WELDING & FABRICATION.
3/96 DUNSMORE RD, COWES, 3922
03 5900 2995 | CNKWELDING@OUTLOOK.COM

LK00036AA

LANDSCAPING

L&S LANDSCAPE SOLUTIONS

Our landscaping designs are practical,
innovative and sustainable.
We provide punctual,
reliable service, every time.

Laurence Marr | 0411 608 482
laurencemarr@gmail.com

- FREE APPRAISALS • OBLIGATION FREE QUOTES
- ALL LANDSCAPING NEEDS

JD00328AA

PLUMBING

brenex 24 hours 7 days
plumbing & gasfitting

- Roofing - Gas - Water - Hot Water - Pumps
- Water Tanks - Sewers & Storm water - Blockages

Brendan Duncan 0418 342 649
PIC No. 26296
Email | brendan@brenexplumbing.com.au

LK00160AA

STEEL

ISLAND STEEL

Steel fabrication • Stainless/Aluminium fabrication
Steel sales cut to order • Sheetmetal fabrication
Guillotine and folding • Gal intels / Retaining wall posts
Truck mounted CRANE HIRE • Genie lift and generator hire
Call for a quote WE DELIVER

14-16 The Concourse, Cowes 5952 1432
Email: sales@islandsteel.com.au

LK00036AA

TREE SERVICES

SOUTHERN ARBORISTS
Art & Science.
Professional Tree Services

Nicholas Harrison – Arborist
Ass. Dip. App. Sci. (VCAH Burnley 88)
soararsc@gmail.com
Phillip Island Mobile 0490 859 721

- Free quotes - Fully insured - Full clean-up -
Specialist in pruning and tree preservation
Hedges, Firewood, Stumps, Fire Safe

LK00160AA

LAUNDRY SERVICES

ISLAND PREMIUM LAUNDRY

Island Premium Laundry offer all
your laundry needs from general house
washing to your pet beds or blankets.
We also wash doonas, pillow top protectors.

To contact us or book in your laundry needs,
call 59 522 889 or email islandpremiumlaundry@gmail.com

LK01388AA

PLUMBING

CHUNKS PLUMBING
All types of plumbing
24 HOUR SERVICE Lic # 48411

- Gas • Hot water units
- Sewers, storm water, blockages
- A local, reliable business

Daniel Campbell - 0438 520 546
chunksplumbing@waterfront.net.au

LK00015AA

STORAGE

Island Secure Storage

Large & Small Units
Boxes & Packaging
Security Monitoring
On Site Manager
24hr / 7 day access

Phone 0400 214 446
4 Industrial Way, Cowes 3922
Alt Ph: 5952 1432 Fax: 5952 5690
Email: storage@islandsteel.com.au
Web: www.islandstorage.com.au

LK00023AA

WINDOW CLEANING

WINDOW CLEANING

0409 946 839
Glassed Out Window Cleaning
Fully insured

JO00760AA

LAWN MOWING

Dave Costello

For all your lawnmowing,
landscaping &
rubbish removal

Call for a free quote
0411 175 957

LK00020AA

PLUMBING

Same Day Plumbing Service MB

Morris Brothers
Lic 43482

Free Quotes - Pensioner Discounts
0403 116 435

LK00031AA

TILING

Tiling

Bathroom repairs
Leaking showers
Re-grouting

30 yrs experience and no jobs too small.

Rob Davies - 0418 522 044

JO00791AA

WINDOW CLEANING

We promise sparkling windows every time! Discounts apply for Pensioners

PREMIER WINDOW CLEANING

Residential & commercial work
Call Maria 0422 258 948
Email: hansamaria39@gmail.com

LK00031AA

LAWN MOWING

Jim's Mowing
Need it Done? Jim's the One

Call 131 546

- ✓ FREE QUOTES
- ✓ Fully insured
- ✓ Police checked
- ✓ OH&S compliant
- ✓ All work guaranteed

RISK FREE

Lawn mowing, gardening, pruning,
hedging, rubbish removal, gutter cleaning,
weeding, mulching, odd jobs

www.jims-mowing.com.au

LK5164

PLUMBING

RELIABLE PLUMBER
Fast Response at an honest price

Tappy the Plumber
0427 776 808

email: tappy@waterfront.net.au
Fully Licenced & insured. All work guaranteed Lic. No. 119269C

- NO CALL OUT FEE
- Leaking taps & toilets
- Hot water systems replaced
- Vanities & water
- Filters installed
- Gas fitting
- General plumbing

LK00044AA

TIMBER & TANKS

VAN STEENSEL TIMBERS

WE KNOW
TIMBER, HARDWARE,
RURAL SUPPLIES
& BUILDING MATERIALS

Phone 03 5678 8552
www.vansteenseltimbers.com.au
Cnr Bass Hwy & Dalyston-Glen Forbes Road, Grantville

LK00044AA

ADVERTISING

To advertise in the
Business Guide

CONTACT JANE ON
5952 3201 OR EMAIL
ADS@PISRA.COM.AU

PAINTER

BESTWAY
painting services

FREE QUOTE

- Residential, Commercial and Industrial
- Interior & Exterior painting
- Paint & stain finishes
- Deck Finishing
- Maintenance
- Quality Workmanship
- Crack Bridging
- Membrane paint

0426 663 777 | info@bestwaypainting.com.au
www.bestwaypainting.com.au

LK00044AA

RESTUMPING

KEANE & SON
House Restumping & Levelling

Paul Keane
0427 080 309

keanesrestumping@outlook.com
PO Box 696, Wonthaggi, Vic, 3995

LK00044AA

TREE SERVICES

SL Tree Care
NO JOB TOO SMALL

- Qualified
- Tree Maintenance
- Tree Removal
- Fruit Tree Pruning
- Storm Damage
- Lawn Mowing
- Garden Maintenance
- FREE QUOTES

Call Shaun **0423 910 554**

LK00044AA

Vale Viv Reith

One of Phillip Island's oldest residents has passed away at the age of 104.

Ethel Vivian May Cook passed away peacefully on January 5, 2022.

She was born in Donald, Victoria on May 13, 1917, the youngest daughter of the local Methodist minister Reverend Osborne and May Cook.

Growing up in Melbourne, Vivian was educated at Methodist Ladies College and then trained as a kindergarten teacher.

Many years later Vivian returned to her alma mater MLC as junior school librarian.

In 1942 Vivian married Alan Docking at the Cooloongatta Road Methodist church in Hartwell. They had three children, Frances, Miranda and Russell.

Vivian was a nurturer and carer, not only a wonderful mother to her children but from her early teen years she was the full-time carer of her invalid mother.

Just after Vivian married Alan he was diagnosed with type 1 diabetes. Her care and support enabled Alan to continue his work as a worldwide respected dental scientist until his death at 56 in 1973.

Vivian from an early age developed a great love of nature and became an avid gardener. Her knowledge of plants was encyclopaedic.

Gardening restored and sustained her through many difficult times in her life.

She was a homemaker and accomplished cook, and her meals were legendary.

When she was in her '80s her grandchildren started calling to ask for copies of her recipes. As a result Miranda and Frances collaborated with Vivian to produce a recipe book titled "By Special Request".

The dining table was the heart and hub of her home.

Vivian was community-minded, supporting the local church, charities and her children's schools: she was a member of St. John's Uniting church in Cowes, a foundation member of Newhaven College and set up the Vivian Docking Reith Fund with the Bass Coast Community Foundation.

She was a member of the Embroiderers Guild and the Australian Native Plant Society.

Vivian remained a widow until 1981 when she married Alec Reith and moved to Cowes and created a happy extended family.

Vivian said that she had "two wonderful men in her life".

When Alec passed away Vivian continued to live in their home and tend their garden until her mid-90s.



One of Phillip Island's oldest residents, Viv Reith, passed away at the age of 104.

She then went to live with Miranda and her husband Albert in San Remo for a few years, before becoming a permanent resident at nearby Griffith Point Lodge. Here she spent her last seven years.

Vivian was lovingly cared for by the loyal and dedicated staff.

Vivian was an exemplary mother, grandmother, great grandmother and friend.

Those at her funeral spoke of her unconditional love for each and every one she came in contact with; an extraordinary legacy for all.



When she was in her '80s Viv Reith's grandchildren started calling to ask for copies of her recipes. As a result daughters Miranda and Frances collaborated with Vivian to produce a recipe book titled "By Special Request".

'I have nothing to hide ...'

Francesca Curtis. March 6, 1931- December 24, 2021

By Catherine Watson

Francesca Curtis was buried on the hill in the beautiful Phillip Island cemetery on January 7, in the midst of a spectacular electrical storm that seemed apt to mark the life of a fearless freedom fighter.

In June 1970, she was interviewed about her lesbian life on a current affairs show The Bailey File. Gays and lesbians had appeared on television before but the practice was to black out their faces. Francesca declined to be hidden, thereby becoming the first lesbian to come out on Australian TV.

"Why have you agreed to be interviewed full face on The Bailey File tonight?" the interviewer asked her towards the end of the interview, a note of incredulity in his voice.

Francesca replied: "I have nothing to hide, I have nothing to be ashamed of, so I decided that I would like to come on and do this full face and talk about the aims of our group."

At Francesca's funeral, Gary Jaynes from the Australian Queer Archives spoke of her courage: "Francesca's decision to do the Bailey File interview strikes me as remarkably brave, especially given the few supports that were available then. The concept of Gay Pride hadn't really been articulated then – at least not in Australia. But Francesca's motivation for doing the interview exemplified it."

In Australia in 1970, male 'homosexual acts' were still illegal. There was no statute against lesbianism but it was a source of great shame.

In Melbourne, gays and lesbians were publicly vilified and privately bashed, including by the cops. You could even be fired for being gay. (You can still be fired today but now only by people of faith!)

Not surprisingly, most gays stayed in the closet.

Not Francesca Curtis. A country girl who grew up in Tarwin Lower and Leongatha, she had come to Melbourne in the 1950s to live a bohemian life.

Having found her tribe, she determined to live her life openly.

In 1969, she became a founding member of the Daughters of Bilitis, set up "to improve the lot of the female homosexual" and now considered Australia's first gay rights group.

Watching her on The Bailey File that night was Phyllis Papps, the daughter of a Greek immigrant family who was engaged but increasingly confused about her own feelings.

Like scores of other women, she wrote to the Daughters of Bilitis at the post box number helpfully pro-



Francesca Curtis: "I have nothing to hide, I have nothing to be ashamed of ..." Photo: Gary Jaynes

vided at the end of the show.

When she met Francesca, the connection between them was immediate.

And so began a loving relationship that lasted 51 years until Francesca's death in Cowes on Christmas Eve at the age of 90.

Soon after their first meeting, Phyllis joined Francesca in the TV studio – full face – to be grilled by This Day Tonight, the country's best known current affairs show, about their lives as a lesbian couple.

Phyllis later wrote: "The program brought with it a flurry of complaints from shocked viewers. Those who weren't complaining were the women who contacted us after the program."

There was much more to their lives than those few tumultuous years as the public face of the Australasian Lesbian Movement. Both had fulfilling careers and contributed to community and public life, including on Phillip Island where they retired in 2001.

But it was the determination to be true to themselves that still transfixes the queer community. It is a rare kind of courage that isn't cowed by authority or the mob.

Phyllis sometimes complained that she and Francesca had spent

50 years coming out but more recent "coming out" events were joyful ones.

In 2017 they celebrated along with many millions as Australians overwhelmingly supported marriage equality.

Having fought so hard for the change, Francesca and Phyllis didn't bother getting married.

In their own minds that had happened on July 11, 1970, a month after they met, when they exchanged gold wedding rings.

For them, the marriage equality vote was about acceptance and equality.

In 2019 they received the Lifetime Achievement Award at the LGBTI Awards in Sydney where Francesca spoke of handing over to the next generation of young queer people.

And in March last year they once again appeared on national TV in Why Did She Have to Tell the World, a film of their lives made by Abbie Pobjoy and Bonny Scott.

At a Q&A session after the film's premiere at the Nova Cinema, they were cheered by the mostly young audience.

It was to be their final coming out. Francesca's health declined soon afterwards.

Phillip Islanders share their stories

The Phillip Island and District Historical Society is delighted to report that the society's exciting oral history project, funded by the Public Records Office of Victoria and the Victorian Government, has gone ahead successfully despite on and off lockdowns during 2020 and 2021.

The lockdowns combined with the added burden of the Society's move out of its home of more than 40 years, pending the construction of the new Cowes Cultural Centre, has in no way impacted the great work undertaken by the project's co-ordinator and website manager, Christine Grayden.

Oral historian Dr Andrea Cleland has succeeded in researching, recording and transcribing seven excellent interviews with nine Phillip Island residents about the last 50 or 60 years on the island.

The interviews were around the themes of farming, tourism, business, lifestyle and migration. So far six transcriptions or essays based

on the transcriptions have been uploaded onto the Essays and Talks section of the website. More will follow when completed. You can view them at: www.pidhs.org.au.

Those interviewed include Bob and Anne Davie on the theme of farming; Keith and Rhonda Jobe for tourism and at the Continental Hotel; their son David for his involvement in the Continental Hotel and Southern Sustainable Developments, which developed the Seagrove Estate. Eileen Maiden and Heather Hamilton were interviewed for the lifestyle theme. In an extra interview conducted by Christine, well-known local artist Josie Kent (aka Josephine Allen) shares her decades in art galleries and many other aspects of the business of art on Phillip Island and elsewhere in Bass Coast and Victoria.

Founder of the Phillip Island and San Remo Advertiser Anne Oswin shares her journey in business on Phillip Island from Devonshire teas



Three generations of the Jobe family at the Continental Hotel, 1991: L-r Ron, Keith, Harry, Kitty, Rhonda and David, with chefs Eric and Gunther at the back. Photo: Jobe collection

at Trenavin Park, her time as a Phillip Island councillor, through to the

establishment of a local independent newspaper in 1989 through to

the present. Freda Aravanis is an active member of the large Bass Coast Greek community. She migrated to Australia as a teenager from a small mountainous Greek island and has watched Phillip Island change over the decades.

Most of the transcripts feature photographs throughout. Other images will be added as they become available.

The interviews make for fascinating reading. The Society guarantees you will learn a great deal about the island's past and more recent history and about the people featured, who generously share their information, stories and also thoughts for the future of the Island.

On behalf of the society, Christine and Andrea would like to thank all those involved with this oral history project and encourage everyone to go on to the Historical Society's website and enjoy all of the many offerings freely available to the public there.



Where is Russell Broadbent, Member for Monash?

The Cowes Covid Testing tent has been closed since New Year's Eve. We are battling to find any rapid antigen tests. Bass Coast Health is still waiting for their order which should have arrived one month ago. Small businesses are forced to close due to Covid exposure and scarcity of staff with no government support. Our hospitals are struggling with our valiant health care workers shouldering unimaginable loads. Where are you? In your electorate's desperate time of need – you are nowhere to be seen. People of Monash deserve much better from their Federal representative.

Louise Gillin, Cowes

Help fight Australia's biggest killer

Every 10 minutes an Australian suffers a heart attack. Sadly, many do not survive with 48 Australians dying every single day from heart disease – someone's family member, wife, husband, or special friend that means the world to them. Given that heart disease is our biggest killer, it would be impossible for all Australian communities to not be impacted in some way.

The simple fact is that there is still so much for us to learn about heart disease and research saves lives. Heart Research Australia aims to reduce the devastating impact heart disease has on families and the community by supporting world-class and emerging researchers to conduct ground-breaking research into the prevention, diagnosis and treatment of heart disease.

That's why this February we invite all Australians to get involved with REDFEB, heart health awareness month, to raise much-needed funds for ground-breaking research into heart disease. Getting involved is as simple as wearing red and donating to Heart Research Australia during the month of February. For more information or to donate, please visit www.heartresearch.com.au

On behalf of the thousands of Australians impacted by heart disease every year, thank you for your support.

Nicci Dent, CEO, Heart Research Australia

Estate disgrace

Panorama Estate in San Remo continues to be a nightmare for those

who overlook this estate.

Bass Coast council say it is not their problem and to contact the owners but only they know who they issued titles to and collect rates from.

The value as well as lifestyle has been ruined for many that adjoin this estate, so no doubt rates will be reduced this year and if the current rate of development continues as present, for many years!

Good reason why other estates in San Remo are booming and this is a disaster.

The role of council includes looking after footpaths and the green area, and the VCAT decision that allowed this development stated it is Bass Coast Shire Council's responsibility should development proceed.

It is still surrounded by temporary wire fences and in disgraceful condition.

Chris Day, San Remo

Rec Centre committee applauded

As a reasonably long-standing resident of San Remo, I would like to acknowledge and thank the members of the out-going San Remo Recreation Centre Committee.

Many of them have served on that body for decades and it is only through their efforts that the centre was built in the first place and well maintained since, for the benefit of the community.

It is to be hoped those who have been appointed as their successors will take on the task with the same hard work and dedication as their predecessors.

Jane Ross, San Remo

Residents should not shoulder the cost

Residents in Sunderland Bay and Surf Beach may have noticed that Council has been busy installing vehicle counting systems (VCS) and 'speed means dust' and 'shared pathway' signs as part of their push to get through the Special Charge Scheme for road and drainage infrastructure.

It is concerning but not surprising that Council has chosen to undertake this exercise during the busiest months on the Island (VCS were installed just after Christmas and removed week of January 17) when it is visitors that will be pushing up the numbers and not us residents that are being asked to pay up to \$40,000 per residence for the proposed works (sealed roads, lights,

drainage, footpaths).

It is Council and the state government promoting our island as a key tourist destination in Victoria (and reaping the rewards) and as such should be covering or seeking grants for these proposed works.

Residents were advised via letters (October 21 and November 23) that information gathered would go before Council (meetings are set for February 16 and March 16) for further decisions to be made. As stated in these letters to residents, we were to be advised of the same information during November/December 2021. No information has been forthcoming so residents have no idea what is going before Council and therefore potential decisions being made on our behalf which will impact our finances and living environment.

This must be stopped in its tracks and Council encouraged to implement other measure to manage our roads eg: regular dust suppression, regular clearing of drains, effective speed humps/dips, sealing key access roads to the beaches and not the entire estates.

And let us not forget the impact that these proposed works (which includes lights) would have on the shearwater bird colony.

Susie Wickes, Surf Beach

Give us a break!

The new temporary "Dust and Shared Pedestrian" signs with a 20km/hr speed, were belatedly placed last week on several key collector roads in Sunderland Bay and Surf Beach and I thank the majority of drivers who observed them which has dramatically improved the dust and safety conditions.

However, there is a minority of drivers, mainly trade vehicles and surfies, who still speed and believe that saving a few seconds is far more important than the safety, health and wellbeing of residents and pedestrians. These few thoughtless drivers undo all the goodwill of the majority and make life unbearable for those living in the area.

Please give us a break and have some consideration for others.

Lou Pecora, Surf Beach

Road policies a failure

Recently Tim Bull MP, Cindy McLeish MP, Tim McCurdy MP, Steph Ryan MP, Bev McArthur MP and former Police Association boss Phil Edge told media across Victoria

that country roads are a dangerous mess and that lowering speed limits won't stop crashes. Lowering speed limits dodges the issue of neglected roads.

Last year, to January 21, four people had died on Victorian roads. In 2022 it's 17. That's not counting injuries and damage to product and vehicles.

VicRoads policies have failed again. They claim to lead the world in road safety. That was 50 years ago. In 2022 they refuse to admit they are wrong on country roads or wire rope barriers. A comprehensive review of VicRoads' administration, policies and maintenance of rural roads is long overdue. Fix VicRoads management to save money. Fix country roads to save lives.

Damien Codognotto OAM, The Motorcycle Riders Association of Australia

Loss of neighbourhood character

I totally agree with the views of Stephen Fullarton and Anne Schade (Advertiser 19-01-2022) that construction of large Melbourne style homes on small lot subdivisions with little or no room for trees or significant vegetation is destroying the coastal village charm so highly valued by locals and visitors alike. This and the excessive paved and gravel areas reduces site permeability and with the current fashion of dark coloured walls and roofs significantly increases the "Urban Heat Island Effect" adding to global warming.

In the outer areas such as Ventnor on larger sites, property owners are removing existing significant trees rather than adopting a more creative house design that would allow their retention.

Instances have occurred where trees required to be maintained under the planning permit for the site were removed with the owners budgeting the Shire fine into the project cost.

On one occasion failure to determine property boundaries resulted in a five metre width of indigenous vegetation with a Shire "Vegetation Protection Overlay" being removed from the boundary of the adjoining property with no consequences from the Shire.

It is hoped the state government's soon to be implemented "Distinctive Area Landscape" policy will give our planners the authority to rectify these issues.

R Lloyd, Ventnor

Mayor fumbling

When he fumbled the order of proceedings at the March 2021 meeting, our now new mayor Cr Michael Whelan explained it away by saying that he had his training wheels on. Perhaps that fumble was caused by excitement at the prospect of introducing his unreasonable conduct policy?

Considering Cr Whelan has been a councillor since 2016, one might reasonably expect him to be well and truly across his brief on council procedures.

I find myself disappointed to see Cr Whelan again fumble at the December meeting, where the bureaucrats railroaded several items through the councillors.

Included among those items was the council's Procurement Policy.

Cr Whelan's fumble came after several councillors expressed concern that the policy did not have the right balance, and that it sets the CEO delegation level too high, precluding sufficient oversight by councillors.

Cr Rochelle Halsted repeatedly attempted to get clarification as to what would happen if the council were to not meet the deadline and thus become non-complaint with the Act.

Despite Cr Halstead's best-efforts Cr Whelan would not give such clarification. Like Cr Halstead, it's a question that I would like to know the answer to.

Cr Whelan appeared restless and agitated at the line of questioning from several councillors. His manner, in my opinion, became somewhat rude and aggressive towards those questioning.

Cr Whelan's fumble came to a head when, clearly agitated, he attempted to disallow any councillor to second an amendment proposed by Cr Clare Le Serve.

At this point Cr Ron Bauer called for a dissent motion, and Cr Whelan abruptly adjourned the meeting.

After nine minutes the meeting resumed and Cr Whelan admitted that he had been wrong to rule against the amendment.

However he offered no apology to his fellow councillors, or to those in the online gallery.

Cr Whelan now sits in the big chair at council, so I don't think it unreasonable to expect better leadership from him.

The next council meeting is now just a few weeks away.

I do hope that Cr Whelan has spent a good portion of the holiday period swotting up on council procedures.

Kevin Griffin, Wonthaggi

Bass Coast Health in Code Brown

In response to the state government declaring a Code Brown for health services, Bass Coast Health will strengthen its existing coordination within the sub-region, across the Gippsland region, and with Metropolitan services.

This will build resilience and capacity at the peak of the Omicron variant outbreak.

In a first for the Victorian Department of Health, a co-ordinated Code Brown (Pandemic Code Brown) has been announced requesting health services activate Code Brown plans simultaneously, formally recognising the compounding pressures on Victoria's health system and workforce.

Bass Coast Health formally activated its Code Brown Plan at midday on January 19 January alongside other health organisations in the region and state.

The Code Brown announcement facilitates co-ordination, communication and information sharing to support the best use of hospital resources.

"A co-ordinated approach allows hospitals to work together to prioritise resources, redistribute demand across the system and manage workforce shortages", said Bass Coast Health CEO Jan Child.

"We have worked hard to build strong and responsive relationships with other services in our sub-region including with Koo Wee Rup Regional, South Gippsland and Gippsland Southern health services. We partner with Latrobe Regional Health, Gippsland Public Health Unit and with our tertiary partners in metropolitan Melbourne. The existing collaboration will strengthen our response and I am very confident we are in a strong position to get through these extraordinary times."

Ms Child said BCH has regularly adapted the way it operated over the past two years to ensure continuity of service and excellence in care during the pandemic.

She said the Code Brown enables the health service to change the way services are delivered to manage the increasing COVID-19 caseloads over the coming weeks. Importantly, it ensures that the sickest patients will be prioritised for care, and it ensures essential, urgent and emergency care will continue.

"Our planning ensures that more staff are available to deliver care in the priority services of Emergency Department, Urgent Care Centre, cancer, dialysis, inpatient care, Hos-



Bass Coast Health formally activated its Code Brown Plan at midday on January 19 January, focusing on priority services like the Emergency Department in Wonthaggi and the Cowes Urgent Care Centre.

pital in the Home, Covid Pathway program, district nursing, midwifery, residential care, testing and vaccinating", said Ms Child.

With Omicron spreading at unprecedented levels, BCH is preparing for more hospitalisations including for Covid patients.

"Our plans to sure up our essential services require sacrifices and changes. Changes to our staffing models, use of alternative workforces, re-deployment of staff, cancellation of all non-urgent elective surgery, and suspension of some community health

work so we can prioritise care for those who need it most.

"These are all really tough decisions – and not ones we make lightly – but we have strong plans in place, and an incredibly strong and able team in place to protect our health system and our community through this latest wave," said Ms Child.

"I have been nursing in public health since 1981 and I have never known the system to be under such duress. Healthcare provision over the past two years has been very challenging, and on top of the pan-

demic, we are building a new hospital at Wonthaggi, planning for a new hospital at Phillip Island and creating new services such as the Rigby Cancer service.

"I am in awe of our team who have worked so hard to improve our services, and I continue to be very confident that we are as prepared as we can be for these challenging weeks ahead. We have an extraordinary team at BCH. The staff are skilled and committed and they have not once stepped away from our charter to deliver excellence in care.

"We are supported by extraordinary partners ... and I am confident that the strong planning, and the strong collaboration, will get our community through this period."

Bass Coast Health expects bed pressures to intensify in coming weeks, requiring this escalation and emergency management response, and they anticipate being able to stand down the Code Brown when the peak of hospitalisations and Omicron has passed, hopefully before the end of February.

"I would like to take this opportunity to pay tribute to our staff, and to thank our community for their unwavering support and kindness."

Boardriders heading north

Phillip Island Boardriders Club is one of 22 clubs competing in this year's Australian Boardriders Battle Grand Final on February 5 and 6.

The competition will be held at Newcastle Main beach, with Surfing Australia promising "two days of epic surfing".

The Phillip Island team will be joined by the Torquay Boardriders, representing Victoria in the event.

The Phillip Island Boardriders Club described the grand final as "one of the best events a club can compete in".

"Phillip Island Boardriders Club (PIBC) have been lucky to surf in a handful of finals over the years alongside surfers they have grown up with and it always is such an amazing event," said PIBC club captain, Harry de Roth.

This year, the team will consist of Carl Wright, Ash Easton, Sage Goldsbury, Blake Green and Harry de Roth.

"Team PIBC is extremely excited and grateful to get back to Newcastle this year especially coming out of a turbulent past 18 months due to Covid restrictions and lockdowns.

"This event is something the club really strives to qualify for and compete in each year and is thrilled to be part of it."

The 2021/22 Hyundai Australian Boardriders Battle has been bigger and better than ever since launching into its ninth season on the Gold Coast in August last year.

In what has become world-renowned as the biggest and best club surfing series on the planet, the nine-leg Hyundai Australian Boardriders Battle Series travels to all corners of the country with events at epic locations like Newcastle for the National Final.

This year, 18 of the best clubs across Australia have qualified and will be competing for first place, alongside five wildcard entries.

What is always guaranteed is incredible surfing and a great atmosphere at the event.

"It is a great opportunity for the club to compete against the best surfers in Australia and show off what amazing talent we have on Phillip Island," Harry de Roth said.

"The team is extremely focussed on trying to bring home a big result this year. All team members have been training hard and surfing really well.

"The spirit and positivity in the club and during training sessions has been great to see. Surfing can be seen as such an individual sport so competing as a team is so much fun and we're so lucky that everyone is such good friends at PIBC.

"I think it makes a huge difference if we can keep focussed but have fun and all get along at the same time."

Stay tuned for updates on the club's Instagram page www.instagram.com/p.i.b.c



Phillip Island Boardriders Club member Harry de Roth in action at the 2021 Boardriders Battle event last year. Photo courtesy of Surfing Australia.



The PIBC team of Carl Wright, Ash Easton, Sage Goldsbury, Blake Green and Harry de Roth will be heading for Newcastle to compete in the grand final of the Australian Boardriders Battle on February 5 and 6.

Newhaven Jetty renewal – take two

Bass Coast Shire Council is getting ready to complete a renewal of the Newhaven Jetty, which has been damaged due to age and wear and tear from wave action.

The work was originally scheduled to begin in mid-December but was postponed. At the time, many users criticised the timing of the repairs at the start of the peak holiday period.

The project will include increasing the height of the lower deck, to improve capacity during high tides for boat launching and retrieval. The existing upper deck will be replaced and improvements to the substructure will also be completed.

The Jetty will be closed throughout the duration of the works which are expected to begin on February 4 and be completed by February 22 subject to favourable weather, tides and contractor availability.

The adjoining boat ramp will be completely closed for four days from February 8 to February 11 to help facilitate these works.

Outside of these dates the boat ramp will be open and during working hours the contractor will help facilitate and manage use of the boat ramp for those wishing to launch their boat at Newhaven.

A Council spokesperson said they understood the Newhaven boat ramp experiences relatively high use during February and said in a normal year, such works would be conducted in a quieter period. "However, with the Rhyll boat ramp being closed between



Renewal work will begin on February 4 on Newhaven Jetty, including increasing the height of the lower deck to improve boat launching and retrieval during high tides. The boat ramp will be closed from February 8 to 11.

February 28 and September 1, it is important that these essential safety works are conducted in February," the spokesperson said.

"This ensures that the Newhaven facility will be fully functional in time to accommodate the overflow from the Rhyll facility."

The \$185,000 project is fully funded by Better Boating Victoria.

Concerns

Some local fishermen are critical of the project, saying it will not solve the issues at the Jetty.

In December, the popular fishing column Around the Bay with Jim's Bait & Tackle said "the proposed work at the jetty will do nothing ... to solve the boating congestion and in fact will make the situation more dangerous than it is now".

"The major problem ... is and always has been, low tide where there is not enough water to access much

of the jetty for tying up. What they are doing is nothing more than putting a band aid over a cut that needs stitches.

"Every other ramp in the country is building floating pontoons while we continue to build solid jetties. This may work in a non-tidal lake, but not ideal for a bay with such a big tide movement."

Noise

The works will include the use of large plant and machinery and might be noisy at times.

The Council said it understands these works may present an inconvenience to nearby residents and appreciates their patience during these times.

Appropriate traffic/pedestrian measures will be in place throughout the duration of the works and the contractor will make every effort to minimise disruptions during construction.

Phillip Island golf results

Tuesday, January 18 – Men's Stableford

Division one winner was Fred Panozzo (16) with 41 points from Ron Young (12) with 40 points on c/b from John Enbom (15).

Division two winner was Neil Buttery (23) with 40 points from Rod Savage (26) with 36 points on c/b to Paul Hewitt.

Nine hole competition winner was David Henstridge (21) with 19 points on c/b from John Withington.

Wednesday, January 19 – Ladies Stableford

A grade winner was Karen Green (12) with 34 points.

B Grade winner was Di Gray (26) with 35 points.

C Grade winner was Judy Lawrence (44) with 36 points.

Thursday, January 20 – Open Par

Division one winner was Simon Furniss (22) with +5, r/up was Tony Zoanetti (20) with +2 from Mary McAllister, Paul Ledwith and Stewart Goldsmith.

Nine Hole stableford competition winner was Brian Carvell (25) with 20 points from Mal MacArthur (27) with 18 points.

Saturday, January 22 – Stableford and Semi Finals of Men's Matchplay

Mens:

A Grade winner was Craig South-

ern (10) with 41 points, runner up was Reece Jamieson (11) with 37 points.

B Grade Winner was Mark Jamieson (13) with 39 points from Daryl Vernon (15) with 38 points on c/b.

C Grade Winner was Owen Trumper (23) with 43 points, runner up was Mick Wyzenbeek (22) with 42 Points on c/b.

NTP: 5th Ian Smith, 7th Daryl Vernon, 10th Paul Dobson, 17th Daryl Vernon.

The Ladies winner was Liz O'Neill (32) with 40 Points from Megan Elbaz (45) with 37 points.

NTP: 5th Ada Anglin, 7th Ira Septiana, 17th Megan Elbaz.

Nine hole competition winner was Reg Wenham with 22 points.

Into the Mens Semi Finals of the Match play are:

A grade – Nev Thurgood V Barry Grazules

B Grade – Phil Ellard V Graham Cuff.

C grade – Max Disher V Greg Hyn-

dman.

D Grade – Rob Purcell V James

Holroyd.

Next week's competition is Stableford and the Finals of the Men's Match Play Championships.

Sunday January 16 – Open Stableford

The winner was Andrew Hewitt (12) with 37 points from Mary Whelan 36 points and Shane Harding with 36 points.

Nine hole winner was Sam Orr with 18 points.

Ella an AFLW ambassador

Bass Coast Breakers' Ella Angarane has been acknowledged for her outstanding contribution to women's football, as part of the 2022 Chemist Warehouse AFLW Community Ambassador program.

Ella spent her childhood at her local football netball club and in 2015 established the Dalyston Youth Girls football team. In 2017 she founded the Bass Coast Breakers Women's football team and went on to become President and Playing Assistant Coach.

Ella played her first game of AFL at the age of 33, chalking up over 50 games and winning a premiership with the Breakers in 2018. Ella's 30-year contribution to football has been recognized with the Volunteer of the Year Award for the South Eastern Women's competition, Gippsland Women's Coach of the Year Award and a Premier's Volunteer Champions Award.

Ella is one of seven community football representatives from across Australia who have been acknowledged in the 2022 AFLW Community Ambassador program.

Established in 2021, the AFLW Community Ambassador program recognises members from the football community who have been instrumental in facilitating and nurturing the remarkable growth of women and girls' football.

Alongside Ella, other participants in the 2022 program are Katie Kennedy (NSW/ACT), Helen Lee (NT), Kate Guy (QLD), Julie Clifton (SA), Jodie Clifford (TAS), and Sarah Kerry (WA) who were selected by the AFL for their significant service to women's football.

Each Community Ambassador receives a \$1000 grant from the Women's Football Fund to donate to the club of their choice and the opportunity to be involved in the 2022 NAB AFLW Finals Series.

AFL General Manager of Women's Football Nicole Livingstone said the 2022 Chemist Warehouse AFLW Community Ambassador program provided a great opportunity to thank and acknowledge the tireless work of community representatives who contribute to women's football.

"We are proud to recognise each of our 2022 Chemist Warehouse AFLW Community Ambassadors and thank them for their service to our game," Ms Livingstone said.

"The NAB AFLW competition is the result



Bass Coast Breakers' Ella Angarane has been named a 2022 Chemist Warehouse AFLW Community Ambassador.

of many years of tireless work from dedicated people, like our 2022 Community Ambassadors, who continue to grow the game at a grassroots and state level. Each of them should be extremely proud of their contribution."

Chemist Warehouse Director, Mario Tascone said the powerhouse pharmacy retailer is proud to be supporting the second year of the program.



Men winners (left to right) Daryl Major, Russell May and John Parker and Runners up Peter Ferguson.

Phillip Island bowls

Well it has been a beautiful week of hot days and sunshine mixed with a lot of humidity but that didn't deter our bowlers from a cracking week of bowls.

Ladies 21up competition

Congratulations to Marilyn Forrest who defeated Lyn Rogerson and Jan Stubbs who defeated Lynne Thomas in the semi-final of the ladies 21 up.

Marilyn and Jan will face off in the finals which is Friday, January 28 at 9.30am.

Social Bowls

Our social day on Thursday saw 21 players take to the green for a game of triples.

The winners were Neville Stevens, Mario Micallef and Monica Poole with the runners up being John Routley, Barry Grazules and Inga Royce.



The Ladies Pairs Winners (left to right) Jan Stubbs and Marilyn Forrest and Runners up Trish Williams and Lois May.

Midweek Pennant

Division one took on Korumburra at home but went down 63-39.

Division two were up against Foster also at home but were also unlucky and went down 49-59.

Weekend Pennant (Saturday)

Division 1 against Leongatha away went down 56-84.

The second Division 1 against Leongatha had success with a score of 86-52 at home.

Division 2 were at Mirboo North and came away with a win. Only just but it's a win 70-66.

Division 4 came away with a huge win over Toora at home 93-42.

Division 5 took all 16 points available due to their opponents being unable to field a full team on the day.

Corporate Bowls

This week saw the start of a new season of corporate competition sponsored by Haymes Paints with 26 teams competing.

Winners for the first round were Hollands Transport closely followed by LeisureStyle and in third Norton Power.

Pennant bowls results

Strzelecki region south midweek

Div 1: Leongatha (1) 14-62 d Corinella (1) 2-57; Meenian (1) 12-54 d Inverloch (1) 4-52; Phillip Island (1) 3-39 lt Korumburra (1) 13-63, San Remo (1) Bye.

Ladder: Inverloch (1) 84 +123; Corinella (1) 68 +12; Leongatha (1) 67 +23; Phillip Island (1) 54

-1; Korumburra (1) 51 +0; Meenian (1) 51 -30; San Remo (1) 9 -127.

Div 2: Inverloch (2) 0-45 lt Toora (1) 16-68; Tarwin Lower (1) 14-65 d Lang Lang (1) 2-53; Phillip Island (2) 2-49 lt Foster (1) 14-59; Wonthaggi (Bye).

Ladder: Wonthaggi (1) 88 +150; Foster (1) 86 +59; Toora (1) 57 +14; Tarwin Lower (1) 47 -38; Phillip Island (2) 46 -29; Inverloch (2) 38 -32; Lang Lang (1) 22 -124.

Div 3: Fish Creek (1) 10-41 d Port Welshpool (1) 2-31; Tarwin Lower (2) 12-46 d Inverloch (2) 0-36; Loch (1) 12-37 d Wonthaggi (2) 0-29; Mirboo North (1) 10-46 d Korumburra (2) 2-36.

Ladder: Fish Creek (1) 72 +74; Port Welshpool (1) 63 +60; Tarwin Lower (2) 54 -21; Korumburra (2) 50 -23; Wonthaggi (2) 48 +119; Inverloch (3) 48 +28; Loch (1) 25 -85; Mirboo North (1) 24 -152.

Strzelecki region south, Saturday Pennant Bowls

Div 1: Korumburra (1) 14-70 d Corinella (1) 2-61; Phillip Island (2) 14-86 d Leongatha (2) 2-52; Wonthaggi (1) 14-79 d Inverloch (1) 2-61; Leongatha (1) 16-84 d Phillip Island (1) 0-56.

Ladder: Wonthaggi (1) 92 +89; Phillip Island (1) 74 -3; Leongatha (1) 70 +69; Inverloch (1) 68 +76; Phillip Island (2) 65 -6; Korumburra (1) 61 -117; Leongatha (2) 44 -47; Corinella (1) 38 -61.

Div 2: Inverloch (2) 16-85 d Fish Creek (1) 0-54; Loch (1) 2-69 lt Toora (1) 14-83; San Remo (1) 14-98 d Korumburra (2) 2-76; Mirboo North (2) 2-66 lt Phillip Island (3) 14-70.

Ladder: Toora (1) 90 +65; Fish Creek (1) 72 +8; Loch (1) 71 +78; Mirboo North (1) 67 +96; San Remo (1) 62 +5; Phillip Island (3) 62 -88; Korumburra (2) 55 -75; Inverloch (2) 33 -89.

Div 3: Lang Lang (1) 14-76 d Wonthaggi (2) 2-70; Loch (2) 0-49 lt Wonthaggi (3) 16-95; Mirboo North (2) 2-54 lt Inverloch (3) 14-97; Foster

(1) 2-58 lt Meenian (1) 14-73.

Ladder: Wonthaggi (3) 100 +122; Lang Lang (1) 83 +22; Meenian (1) 82 +69; Wonthaggi (2) 68 +84; Foster (1) 67 +46; Inverloch (3) 65 +54; Loch (2) 29 -232; Mirboo North (2) 18 -165.

Div 4: Inverloch (4) 14-93 d Corinella (2) 2-54; Phillip Island (4) 16-93 d Toora (2) 0-42; Korumburra (3) 14-77 d Tarwin Lower (1) 2-71; Port Welshpool (1) 12-67 d Leongatha (3) 4-62.

Ladder: Phillip Island (4) 112 +204; Port Welshpool (1) 80 +17; Tarwin Lower (1) 72 +5; Leongatha (3) 64 +30; Korumburra (3) 64 -64; Inverloch (4) 55 +10; Toora (2) 38 -112; Corinella (2) 26 -170.

Div 5: Lang Lang (2) 12-74 d Fish Creek (2) 4-59; Phillip Island (5) 16-24 d Mirboo North (3) 0-0 (Forfeit); Wonthaggi (4) 16-79 d Meenian (2) 0-50; Tarwin Lower (2) Bye.

Ladder: Phillip Island (5) 92 +98; Wonthaggi (4) 86 +93; Meenian (2) 78 +122; Fish Creek (2) 39 -26 Mirboo North (3) 33 -147; Lang Lang (2) 32 -70; Tarwin Lower (2) 24 -70.

South West Gippsland Midweek Bowls Group

Winners: Vern Elliott, Sue Stansfield, Bill Williams, Elaine Williams.

Runners up: John Nicholson, Mary Masters, Gillian Harper, Michael Saunders.

One game winners: Rob Jeffries, Dennis Talbot, Lindsay Russell.

Thursday, January 20, Midweek Bowls was played at Koo Wee Rup with 24 bowlers. Sadly some of our members are in isolation, we hope they will be back with us soon.

Still it did not deter the other members from enjoying their bowls and as usual good hearted banter was heard across the rinks. Even though the green ran very slow it was in top condition

but with a slow green we bowled some very short bowls.

Still some good scores were recorded. Winners 38 points. Runners up 35 points. One Game Winners 20 points.

The weather was very good to us.

Although hot we had a cool breeze which made it very pleasant to bowl.

Sadly the RCH did not do well with only one member falling on their sword, but was happy to donate.

Thank you to our members who brought goods in for the free raffle - we had lovely fresh produce.

Thank you to the helpers in the bar and kitchen. We hope to see George back very soon.

Next week we will play at Lang Lang, 10am at the club for a 10.30am start. BYO lunch and uniforms and please be on time in order for us to start on time.

For more information or to register please contact Peter McWilliams on 5678 5974 the night before or just turn up early on the day of play.

Come and join us, I guarantee you will enjoy our midweek family.

Everyone welcome and we will see you on the green.

Phillip Island Bridge Club results

The holiday season is drawing to an end, and it is lovely to see the numbers of players returning to bridge.

We have also welcomed several visitors to the Island and surrounds.

Density limits must be observed, and masks worn indoors at all times

Always check the website for up-to-date information.

After a rocky start Wendy and Graham Mckergow settled down and came second with 59.72 per cent.

Miranda Sage and Molly Downing did well in their new partnership to come third with 56.25 per cent

The club has capacity for, and welcomes, new members.

Lessons are available.

We would love you to join us in this fascinating game. It is good for the grey matter and a great social experience as well.



**Phillip Island
BREAKERS**

Coaches for the Soccer Cub

Expressions of interest wanted for senior coaching positions at Phillip Island Soccer Club, Senior Men and Senior Women's positions are available. For more information, or to express your interest please contact phillipislandsoccer@gmail.com

**PIFNC 2022
Netball Trials
junior and seniors**

**Saturday 29th January &
Sunday 6th February**

**Prior registration is
compulsory via**

**[https://netballtrials.com/
clubs/phillip-island-
football-netbal/](https://netballtrials.com/clubs/phillip-island-football-netbal/)**

**Any queries to
Nazza O'Brien
0404 019 852**



**PHILLIP ISLAND
BULLDOGS**

FOOTBALL & NETBALL CLUB

Undermanned Sharks battered by Leongatha

A1

This week saw an undermanned Phillip Island side venture to Leongatha to take on second placed Leongatha Town.

The Sharks lost the toss, were asked to have a bowl and despite a pretty honest start by opening bowlers Tom Keily and Max Royal the boys were unable to make any inroads.

The first two wickets came from evergreen Charith Keerthisinghe who was able to get a couple of much needed break throughs to wrestle back some control for the Sharks on what was a lighting quick Scorpion Park outfield.

A few outs with Covid saw the return of Matt Dennerly to the A1 side along with debutant Sarith Angelo and together the two bowled some important middle overs; however it must be said the star of the show was Town batsman Sahan Perera who finished unbeaten on 126, dragging his side to 3 for 245 at the completion of their 40 overs.

Chasing a big total new openers Brodie Johnston and Jarrod Black made a good start getting the score to 37 before Jarrod Black was dismissed LBW. Johnston followed in quick succession bringing Henry Shawcross and Daniel Mock to the crease.

Mock proved to be the backbone of the Island innings and despite a nasty bout of food poisoning remained stoic as regular wickets fell around him.

He was eventually the 10th dismissed for a run a ball 80 dragging the Sharks total to 192, well short of the 245 set by Leongatha Town making this the boys first loss for the season.

Next week the Sharks take on Wonthaggi at Cowes and will be hoping to get their season back on track with five regulars hopefully coming back into the A1 set up.

A special shout out to Henry Shawcross who played his last game for the club before a family move back to Western Australia.

Anyone who knows Henry knows what a terrific person he is and what a massive loss he will be for the Club.

To Henry, Steph, Kane and Riley all the best with the move and you're always welcome back with open arms.

B1

This week we took on a young Leongatha-Town team at Cowes looking to bounce back after our first loss of the season last week.

As seems to be a building trend, Macca lost the toss and Town chose to bat.

Geoff Odgers started us off down the hill and in his first game for B1, Tim Niven was given the honours of opening the bowling up the hill and he did not waste any time, bowling the Town opener with his first ball!

The pair bowled unchanged for 15 overs. Odgy bowling well without any luck, but young Nivo was on fire on debut, clean bowling another three batsmen to finish with the astonishing figure of 4/13 off his first 8 overs in B1 -unbelievable!

Zac Walker replaced Odgy down the hill and was a bit wayward this week, but still took 2/30



Mick Cleary (L) brought up his 50 with an all run 5 off the last ball of Phillip Islands innings against Koonwarra on Saturday. Mick is with Gav Excell who top scored with 69.

off seven overs.

Pete Cleary chipped in with one and when Clint was brought into the attack to replace Zac, he quickly finished the innings off taking three wickets in nine balls to see Town dismissed for 127.

Macca opened with Kurt Lane and Kurt, as is his way, launched from ball one, hitting anything he could to the boundary.

With Macca feeding him the strike, Kurt quickly got us to 52 in the seventh over before he was dismissed for 35 off just 21 deliveries.

Next in was Kev Taylor back for his first B1 game of the year, and together with the skipper, the pair continued to punish anything loose from the young Town bowlers.

The pair quickly rattled off the required runs to win with 20 overs still to spare to wrap up a solid victory. A great all-around effort ahead of tough assignment away against top of the table Nerrena next week.

RSL Man of the match was Tim Niven.

B2

Womersley gets a hundred!

Phillip Island Sharks travelled over to Poowong to take on Poowong Loch with seven changes in player personal from the week before.

The Sharks won the toss and elected to bat



C2 blue captain Mick Cleary with the Macmillan twins Connor and Thomas who played their first game with C2 blue on Saturday. Thomas made a great 32 and the boys opened the bowling and did a sensational job with Conner clean bowling the Koonwarra opening batsman

first. Epifano and Fusinato opened up, Fusinato was first to go leaving the sharks 1/16.

Dave Womersley joined Epifano and they had a good partnership going before Epifano was stumped leaving the sharks 2/66.

Parsons was next in and built a good partnership with Womersley who was hitting boundaries at will to bring up his 100, to have the Sharks in a good position at 2/150.

Poowong fought back with the ball taking some quick wickets to have the Island 5/198.

Poowong struck again picking up Womersley for a well-made 128 leaving the Sharks 6/202.

The Sharks ended up 7/225 of their 40 overs.

It was the Shark's time to bowl and they knew they had to bowl well against Poowong's strong batting line up.

Young George McCausland picked up the first wicket in his first B grade game.

The Sharks kept pushing for wickets, changing bowler to get that second break through but couldn't get one with Poowong passing the score one down.

RSL Player of the Match was Dave Womersley.

C2

Phillip Island C2 took on Koonwarra Gold in the round nine match at Reece Park, Rhyll.

The Sharks won the toss and batted.

Excell and Manning opened and as usual got the Island off to a great start.

The pair smashing the ball across the lightning-fast outfield putting on 81 when Manning was bowled for 43.

At drinks the Sharks were 1/91. Fall (15) was elevated up the order and was just started to get going when a sceptical full toss was caught in the outfield.

Patterson (1) followed a similar fate not long after. Gav Excell continued to destroy the attack on his way to a well-made 69.

The much-anticipated MacMillan brother's partnership lasted only one ball as Connor was bowled for a duck.

The skipper joined Thomas MacMillan and the pair piled on the runs with a combination of heavy hitting and fast running between the wickets. Thomas almost lapping the captain at various times.

Thomas was dismissed late in the innings for a brilliant 32 in a partnership of 72.

Parry was bowled for a duck and Francis saw out the last over with Cleary.

On the last ball, in scenes reminiscent of the Benny Hill Show, Cleary and Francis managed to run five to bring up the skipper's half century.

Cleary 50 not out and Francis 2 not out, Sharks 7/223.

The Macmillan lads opened the bowling and both bowled extremely well.

The Island grabbed the first wicket when Connor MacMillan and Patterson combined for a run out.

Connor then clean bowled the other opener.


Koonwarra then put on a partnership, but it was broken when Patterson and Johnston combined for a run out.

Fall then bowled the Koonwarra skipper and Francis grabbed back-to-back wickets with a catch to Johnston and an LBW.

Koonwarra was 6/110.

Koonwarra then crept their way to 169 by the end of the innings.

The Sharks won by 58 runs, a great team effort.



MATCH SUMMARY

A GRADE

**PHILLIP
ISLAND**

192
3-245

**LEONGATHA
CLUB**

D. MOCK

80

2-54

C. KEERTHISINGHE

J. BLACK

22

1-26

M. DENNERLEY

H. SHAWCROSS

21

LEONGATHA TOWN WON BY 53 RUNS

B GRADE - DIVISION 1

**PHILLIP
ISLAND**

1-130
127

**LEONGATHA
CLUB**

K. TAYLOR

46*

4-13

T. NIVEN

S. MCINTYRE

40*

3-2

C. WILSON


K. LANE

35

2-30

Z. WALKER

PHILLIP ISLAND WON BY NINE WICKETS



Lebanon
Cricket Board

MATCH SUMMARY

B GRADE - DIVISION 2

**PHILLIP
ISLAND**

7-225

**POOWONG
LOCH**

1-226

D.WOMERSLEY

128

1-38

G.MCCAUSLAND

M.PARSONS

20

C.EPIFANO

17

POOWONG LOCH WON BY NINE WICKETS

C GRADE - DIVISION 2

**PHILLIP
ISLAND BLUE**

7-223

**KOONWARRA
L/RSL GOLD**

6-165

G.EXCELL

69

2-31

P.FRANCIS

M.CLEARY

50*

1-14

C.FALL


J.MANNING

43

1-17

C.MACMILLAN

PHILLIP ISLAND WON BY 58 RUNS



MATCH SUMMARY

**PHILLIP
ISLAND**

146

INVERLOCH

K.BEAUMONT

39

B.ROSS

15

Z.WALKER

10

UNDER 19'S

4-131

**PHILLIP
ISLAND**

9-48

NYORA

O.DUGGAN

31

3-0

J.TRAN

J.HUGHES

27

2-6

J.HUGHES

H.WOMERSLEY

26*

1-0

G.MCCAUSLAND

PHILLIP ISLAND WON BY 83 RUNS



South West Gippsland midweek bowls

Game held at Koo Wee Rup Bowls Club. Winners: Vern Elliott (S), Sue Stansfield (3), Bill Williams (2), Elaine Williams (L)

Cowes Classic moves to March

The decision has been made to delay the Cowes Classic by a month.

After consultations between the organisers of the Cowes Aquatic events from the Woolamai Beach Surf Life Saving Club, Phillip Island Football Netball Club and the general community it was universally agreed that it would be in the best interests of all involved if the Little Penguin Dash and the Cowes Classic were held a month later than originally scheduled.

Both events will be moved from February 5 until March 5.

The timetable for the day will remain the same with the Little Penguin Dash heading off at 10.30am and the Cowes Classic starting at 2.15pm.

This means that the Cowes Clas-

sic will now become the final leg of the Bass Coast Series following the Channel Challenge which is still


scheduled for February 19.

Online registrations and information at www.basscoastseries.com.au.



The Cowes Classic and the popular Little Penguin Dash have been moved to march, due to ongoing impacts of the Covid pandemic

TIDE GUIDE

Tidal predictions for Stony Point, Cowes -0.09 Newhaven -0.31 HIGH TIDE IS MARKED IN BLACK																				
WED 26 JAN			THU 27 JAN			FRI 28 JAN			SAT 29 JAN			SUN 30 JAN			MON 31 JAN			 TUE 1 FEB		
LOW	12:37 am	0.77 m	LOW	1:21 am	0.89 m	LOW	2:08 am	1.03 m	LOW	2:59 am	1.17 m	LOW	3:59 am	1.29 m	LOW	5:12 am	1.36 m	HIGH	1:09 am	2.78 m
HIGH	7:06 am	2.83 m	HIGH	7:39 am	2.76 m	HIGH	8:17 am	2.68 m	HIGH	9:02 am	2.68 m	HIGH	10:00 am	2.51 m	HIGH	11:11 am	2.44 m	LOW	6:34 am	1.33 m
LOW	1:07 pm	0.53 m	LOW	1:45 pm	0.45 m	LOW	2:29 pm	0.40 m	LOW	3:18 pm	0.39 m	LOW	4:18 pm	0.41 m	LOW	5:31 pm	0.43 m	HIGH	12:33 pm	2.43 m
HIGH	7:51 pm	2.69 m	HIGH	8:44 pm	2.70 m	HIGH	9:41 pm	2.69 m	HIGH	10:45 pm	2.69 m	HIGH	11:56 pm	2.72 m				LOW	6:49 pm	0.43 m

All material is supplied in good faith and is believed to be correct. No responsibility or liability for errors or omissions is accepted.



PHILLIP ISLAND MARINE

NEW & USED BOAT SALES

14 Beach Road, Rhyll
OPEN 7 DAYS

PH: 5956 9238

www.phillipislandmarine.com.au



Womens Final (left to right): Jade Ricardoo, Zoe Adams, Gemma Ricardoo, Abby Clarke, Niamh Moore, Amber Goldsbury, Natalie Van Der Heyden. Photo Tommy Williams.



Men's Final (left to right): Joe Van Dijk, Jake Eisen, Ash Easton, Arthur McKenzie, Dylan James, Harry De Roth. Photo Tommy Williams.

Single Fin and Supergroms event success

On Saturday, January 22 Phillip Island Boardriders Club hosted a successful single fin surfing event at Cape Woolamai with the Supergroms surfing session at Smiths Beach.

Phillip Island Boardriders Club put on an epic day bringing out all the old school single fin boards. The weather and the vibe was incredible, and it was great seeing so many talented local competitors.

Competitors were required to surf on pre-1990s single fin surfboards at Cape Woolamai's iconic beach. Among the red-hot field of local surfers were the junior surfers competing with the founding members of the Club.

"This is the type of contest I really enjoy nowadays," said original boardrider Mal Gregson about the event.

"But what makes it so special is the local community enjoying the day in the sun with lots of

laughs and good times."

A massive congratulations to Ash Easton for taking out the Men's divisions and Amber Goldsbury for taking out the Women's divisions by winding back the clock and beating the young hot shots on the retro surfboards.

The Committee was thrilled to be able to host this event after the uncertainty of Covid. It was a wonderful opportunity to get together, have some fun and enjoy our stunning coastline.

Huge thanks to Phillip Island Nature Parks, Woolamai Surf Life Saving Club, Bang Bang Bar and Restaurant, Archi Signs, Woolamai Pizza, Eisen Property, McHenry Motors, Harry Anderson and San Remo Hotel for supporting this amazing event.

For more information on upcoming surfing events, following www.instagram.com/p.i.b.c.



Enjoying the Supergroms event, Chris Foster (Fozzy) and grandson Julian. Photo Abby Clarke.



Women's winner Amber Goldsbury. Photo Lachlan Moore.



Men's winner Ash Easton. Photo Lachlan Moore.

**ALEX SCOTT
AND STAFF**

**44-48 THOMPSON AVENUE, COWES
(ELLIS ARCADE)**



- Strategic Freehold Retail Investment on 1 title
- Commercial Zone 1 – 1,931.71m² in total
- 48 Thompson Avenue currently has a long term tenant

**EXPRESSIONS OF INTEREST CLOSING
TUESDAY 1ST FEBRUARY @ 4PM**

7VISION CIRCUIT, SUNSET STRIP



- Spectacular sweeping views over farmland to the bay beyond
- Open plan living upstairs opening onto a fully covered alfresco area
- 4 bedrooms/3 bathrooms/2 cars

CONTACT AGENT

22 KOALA STREET, COWES



- Situated only a short walk to the beach and the main street of Cowes
- Vacant corner allotment of approx. 570m²

**AUCTION SATURDAY 29TH JAN
@ 2PM ON SITE**

**WE HAVE
CASH
BUYERS
READY TO
PURCHASE
NOW!**

**CALL US
TODAY FOR A
FREE MARKET
APPRAISAL.**

**113a Thompson Ave, Cowes
www.alexscott.com.au**

5952 2633

HOME DELIVERY
Call your local
newsagency

ISSN 2200-100X



9 772200 100002

PHILLIP ISLAND & SAN REMO

ADVERTISER