



PHILLIP ISLAND & SAN REMO

# ADVERTISER

YOUR COMMUNITY VOICE!

Wednesday, May 7, 2025

\$2.00 Incl. GST



Cape Woolamai's Matt Ware did a refresher CPR course last October when a new AED defibrillator was installed outside his Wooli Express store. Last week he helped save a man's life who collapsed at the Tenpin Bowling centre.

## A life-saving refresher course

### COMMUNITY

When Cape Woolamai's Matt Ware did a CPR refresher course last October, he didn't realise just how life changing it would be.

Last week Matt was taking part in a regular bowling competition at the Phillip Island Tenpin Bowling centre, when one of his fellow competitors, an elderly man, collapsed.

"He'd just bowled, and I was having my turn, and I turned around to see he'd collapsed," Matt said.

While someone called an ambulance, Matt straight away started CPR.

"I checked his pulse and me and another guy, Johnny, took turns doing CPR until the ambos arrived," Matt said.

The paramedics asked the two men to keep up the compressions while they set up the defibrillator machine.

"We also kept going between (the paramedics) doing the shocks."

The paramedics told Matt that if he hadn't started CPR, the man would have died.

Matt said he'd done a CPR course about 20 years ago, "but a lot of things had changed since then".

He said the course gave him the confidence to act.

"I'm really glad I did the refresher course. I knew what I had to do," he said.

"I really think if people get the opportunity to do a CPR course, then do it."

"You can help until paramedics get there. That first 10 to 15 minutes are pretty crucial."

Matt was full of praise for the local paramedics who attended the scene.

"The ambos were amazing. I can't say enough about how great they were."

The man was airlifted to the Alfred Hospital and placed into an induced coma.

On Saturday, Matt said he'd received news the man had regained consciousness and was communicating with his family.

### Defib

Matt's refresher CPR course last October came about after a new AED defibrillator was installed outside his Wooli Express store in Cape Woolamai.

The unit was donated by the Wonthaggi Rotary Club and is available to the public 24/7.

When it was installed, Matt was one of the locals who took up the offer by local paramedics Immogen and Erin, for training on CPR and how to use the defibrillator unit.

At the time, Immogen told the Advertiser that, "as a local paramedic, I've seen firsthand how crucial this will be in assisting anyone experiencing

cardiac arrest".

She organised a "Call, Push, Shock" session at the Wooli Tavern for people to learn how to use the new AED and receive tips on CPR.

Matt was one of the people who attended.

"For a one-hour course, it is so worth doing," he said.

"It could be one of your loved ones, or a stranger - it doesn't really matter - it's the fact that you can keep blood pumping until paramedics arrive."

He described the night at the bowling alley as a "life changing experience".

"It's the best thing I've ever done. It made a big difference and I'm so glad I did that refresher course."

He urged everyone to do a CPR course if they had the opportunity.

"I can't stress enough that it could make a huge difference to someone."

## Monash still not called

### ELECTION

As the Labor Party sailed to a decisive victory on Saturday night nationally, the result for the seat of Monash is less clear.

At the time of our deadline, the Australian Electoral Commission had yet to declare a winner, although Liberal candidate Mary Aldred was the front-runner and picked up over 32 per cent of first preference votes.

The AEC said the votes would be calculated on a three-way contest, between Aldred, Labor's Tully Fletcher and independent Deb Leonard.

The distribution of preferences will decide the final outcome.

Former MP Russell Broadbent received just 10.15 per cent of the first preference vote, with the election ending his decades long political career.

While the final result is not yet known, the vote tally does reveal some trends.

The Liberal Party primary vote was down by 5.6 per cent. This was likely impacted by Mr Broadbent's decision to run as an independent, however his preferences should flow to Mary Aldred.

The Labor Party's primary vote was also down, dropping to 20.37 per cent, compared to 24.6 per cent in 2022.

Independent Deb Leonard lifted her primary vote from 10.72 per cent to 17.49 per cent. Leonard polled well on the island (in the high 20s), but her vote fell dramatically at the other end of the electorate, where she only picked up between 12 and 16 per cent of the first preference votes.

Continued page 8

**Kilcunda Bass Football Feature**  
Page 24-25

**Pet week**  
Page 14-55

**SOUTH COAST TAXIS**




**13cabs**  
Book with 13cabs app  
Download on the App Store

**1300 687 222**

**COWES SELF STORAGE**

**COWES BOAT CARAVAN & RV STORAGE**



**FULLY SECURED - FULL SURVEILLANCE**

Ray White Phillip Island  
41 Thompson Avenue, Cowes  
5952 2799

**SOUTH COAST FLOORING XTRA**

A FABULOUS FLOORING EXPERIENCE

155 Thompson Avenue, Cowes 03 5952 1488



PHILLIP ISLAND

7 DAY WEATHER FORECAST

Wed/May7	Thu/May8	Fri/May9	Sat/May10	Sun/May11	Mon/May12	Tue/May13
SHOWERS	CLOUDY	PARTLY CLOUDY	MOSTLY SUNNY	MOSTLY SUNNY	MOSTLY SUNNY	PARTLY CLOUDY
15 20	12 18	11 19	10 19	10 20	13 18	13 18

# Government releases new report on Silverleaves

## EROSION

Silverleaves residents will have to be satisfied with their new rock bag wall, after the State Government confirmed the planned sandbag wall will now not go ahead.

The Department of Energy, Environment and Climate Action (DEECA) made the confirmation last week after releasing the draft East Cowes and Silverleaves Adaptation Plan, which is out for community comment until May 30 (more details in next week's paper).

A DEECA spokesperson said the rock bag revetment – which was built in April – fulfilled the same objective as the previously proposed sandbag wall, which was set to be finished by August and was to cost about \$500,000.

The spokesperson said a sandbag wall would be a duplicate measure, “offering little to no added protection”.

“The recently completed rock bag revetment wall was prioritised to provide immediate protection for the Silverleaves foreshore in response to community concerns around king tides, these works replace the need for additional short-term works,” they said.

“The rock bag wall will provide ongoing protection of the Silverleaves foreshore for an estimated five to 10 years while DEECA continues planning for longer term solutions.”

More than 500 rock bags

were placed at the Silverleaves erosion hotspot in April.

Rocks from Tynong were trucked to Phillip Island, then bagged at Gap Road, before being hoisted by heavy machinery along the beach.

## Report

The draft East Cowes and Silverleaves Adaptation Plan outlines a list of potentially viable long-term management options for managing erosion along the Silverleaves foreshore for the coming decades.

Consultant FSC Range completed a coastal processes study for the report, the same consultants who wrote last year's report Observation Point to Silverleaves: Gippsland West Coastal Processes Studies, which showed about 16 metres of the foreshore at Silverleaves erosion hotspot had been lost to erosion.

According to DEECA, the study has provided “a deeper understanding of the forces within the Silverleaves coastal environment that affect the shape of the coastline and importantly how this process is likely to progress over time”.

This draft has incorporated input from the Silverleaves Community Reference Group.

See next week's paper for more details.

Details: [engage.vic.gov.au/silverleaves-coastal-adaptation-pathways](http://engage.vic.gov.au/silverleaves-coastal-adaptation-pathways)



The new rock bag wall in Silverleaves' erosion hotspot came just in time for the biggest king tide of the season last Thursday.

## POLICE BRIEFS

### Speeding fines

In just over two hours, between 8.20am and 10.35am on April 29, local police caught seven drivers speeding, totalling over \$2900 in fines.

Five of the drivers were caught exceeding the speed limit in the 40km/h school zone near Newhaven College, on Phillip Island Road.

The remaining offences were at San Remo (88 km/h in a 60km/h zone) and on the highway at Bass (113 km/h in 100 km/h zone).

“All of these offences were preventable,” police said.

“If people slow down to the correct and signed speed limits the entire community will be safer.”

### Burglary

Police and Crimestoppers have launched a campaign reminding people to secure their home properly.

Crime statistics show that up to 80 per cent of aggravated burglary in Victoria involve offenders entering through unlocked doors or windows.

Statistics also show they abandon the attempt once they discover the home is secure.

The Crimestoppers Victoria website contains tips and hints for securing your home.

Melina BATH MP

THE NATIONALS MEMBER FOR EASTERN VICTORIA REGION

2/181 Franklin St, Traralgon VIC 3844

[melina.bath@parliament.vic.gov.au](mailto:melina.bath@parliament.vic.gov.au)

5174 7066

MelinaBathMLC

Don't hesitate to contact me, I am here to help.

Cr Ronnie Bauer  
for the Island Ward,  
Bass Coast Shire

PO Box 996 Cowes 3922  
Tel: 0439 535 282  
email: [Ron.Bauer@basscoast.vic.gov.au](mailto:Ron.Bauer@basscoast.vic.gov.au)  
Authorised by Ronnie Bauer, PO Box 996, Cowes 3922

“Funeral Care, With Compassion, Respect & Dignity”

Locally owned and operated.  
Professional, affordable Funeral Services available 24 hours a day 7 days a week.  
Servicing all types of disposition including burial, cremation, natural burial and aquamation on the Bass Coast including Gippsland.

YOUR FUNERAL, YOUR WAY

Contact: Michelle Brown, 0448 602 005  
[helo@basscoastfuneralservice.com.au](mailto:helo@basscoastfuneralservice.com.au) | [www.basscoastfunerals.com.au](http://www.basscoastfunerals.com.au)

COASTAL

REFRIGERATION & AIR-CONDITIONING

Refrigerant Trade Auth No: AU 51426 - PI 48651

- Service Agent for Daikin
- Commercial & Domestic Refrigeration & Air Conditioning
- Licensed Split System Installer • Sales, Installation and Service

AH'S COMMERCIAL BREAKDOWN EXPERT AFTER SALES SERVICE

Rick North – Servicing Phillip Island & Surrounding Areas

Phone: 5678 5190 – Factory 1, 60 Genista St, San Remo

[www.coastalrefrigandaircon.com.au](http://www.coastalrefrigandaircon.com.au)







At last week's AGM the PICAL board president was questioned extensively on the legal advice he received that determined how PICAL responded to the crisis. Meanwhile the board confirmed donations that were promised to the organisation had not come to fruition.

# Heated PICAL AGM reveals financial, legal risks

## COMMUNITY

PICAL has posted an annual profit in the wake of last year's insolvency crisis, but still faces risks, including complaints against the centre with Australia's industrial relations tribunal.

Last week the Phillip Island Community and Learning Centre (PICAL) held its AGM where up to 30 members, past staff and former board representatives confronted the board of management about transparency concerns.

During the 90-minute AGM, a Neighbourhood Houses Gippsland representative said it was "concerning to listen to so much discord" at a community house meeting.

A board member then questioned whether it was "discord or healthy discussion", to which an attendee added "this is pretty hot".

A current board member said the "crisis" had been a "dreadful experience for everyone on the committee".

The crisis began in October last year when PICAL declared impending insolvency, unable to meet debts incurred from what was described as an "administrative inaccuracy", in the form of underpayment of wages to employees for under a decade, "based on information at the time".

After being thrown a lifeline by Neighbourhood Houses Gippsland and Bass Coast Shire Council, who guaranteed essential services would continue if PICAL was forced to wind up, the crisis then concluded when PICAL announced they were in fact able to meet their debts.

In November last year, PICAL reassured the community staff wage payments were fully compliant, while all past staff impacted from the previous liability would be paid by July 2025.

## Finances

The AGM was the first time the budgetary implications of the crisis were revealed to the community, with the meeting told the historic underpayments totalled \$163,000.

About \$30,000 of that \$163,000 has already been paid out to nine of 16 impacted past and current employees, with three agreeing to deferred payments in July and a further four yet to "advise on details for action".

PICAL has an operating surplus for 2024 of \$49,981.

The surplus excludes the \$163,000 debt, meaning a total net deficit of \$112,954; however as the debt was incurred over about six years it is not reflected in a single year's financials.

According to centre manager David Rooks the 2024 profit was due to the "reduction in operational costs".

"There's not much more we can do to reduce costs. In terms of finances our next goal is to look at ways of increasing our income and we are investigating opportunities here," Mr Rooks said, adding they had posted profits in the last two years, after 10 years of losses.

Treasurer Greg O'Callaghan explained PICAL "survived" and was "thriving", with almost \$200,000 in the bank.

Once all payments have been made, cash reserves will be eroded, but the first quarter of 2025 was tracking ahead of budget with a surplus of \$19,000, it was stated.

The historic liability was incurred over six years and as such is not correct to represent this against a single year's financials.

The 2024 financials included: \$337,000 revenue, \$175,000 employee expenses, and deficit of \$113,000.

"We still believe we are

currently solvent. But that can still change," Mr O'Callaghan said.

A former board member said when she left in December PICAL was losing about \$7000 per month and was \$21,000 "down", asking how this had changed.

Mr O'Callaghan replied "restructuring the financials" had helped "end better than we had thought".

An attendee asked whether there was any personal liability for committee members trading insolvent, "or going forward should something happen?".

Mr Turner said their advice was "no"; and Mr O'Callaghan added if there was insolvency with fraud and dishonesty, then "potentially".

"That's why we put up the white flag (with media reports)," Mr O'Callaghan said.

"After receiving our legal advice ... we suddenly believed we were solvent, as we still are today.

"Solvency is a matter of belief. If you have faith in the financials you have belief."

Mr O'Callaghan confirmed promised donations had not come to fruition.

Board president Graeme Turner said he believed the lack of donations was because PICAL had survived, while Mr O'Callaghan said he believed it was due to a statement in the Advertiser from Neighbourhood Houses Gippsland and Bass Coast Shire Council saying services would continue if PICAL liquidated.

## Transparency

In February PICAL management released a statement responding to concerns about the departure of three board members and operational transparency.

At the AGM Mr Turner was questioned extensively

on the legal advice he received that determined how PICAL responded to the crisis, information which some committee members say was kept from them.

"It was legal advice to PICAL but addressed to me with legal privilege," Mr Turner said, adding it was "commercial in confidence".

"I was explicitly told by the lawyer not to share it."

An attendee said Mr Turner asked his committee to make financial decisions "without having access to legal information to enable them to make a purposeful decision".

Mr Turner responded "that was the process I followed".

The attendee replied "that was why you have people resigning from the committee".

A former board representative agreed saying there was "frustration" around the process that led to "argumentative meetings" and it "went down a very slippery slope".

"Don't sit there and say I'm supposed to be able to make a decision. Lawyers can be wrong. We were never given the information.

"We were asked to make decisions based on whatever Graeme told us.

"We were making decisions together, equally responsible."

Board member Gea Lovell said she felt the committee was "given enough information", to which the former member added "you were privileged to it".

Another attendee said the rules of the association detail the committee was collectively responsible: "committees of management are always collective".

"I can understand if there's been division within the committee, that some people know things and some people don't. It really puts people off," the participant said.



The former PICAL committee of management stood down at last week's AGM, only to be voted back in with no opposing nominations. The president continues to be Graeme Turner (pictured), vice president Tim Anders, secretary Christine Ash and treasurer Greg O'Callaghan.

## PICAL board returns unopposed

### COMMUNITY

The former PICAL committee of management has been returned unopposed, at last week's AGM.

The vote was met with a cool response from up to 30 PICAL members, past staff and former board representatives who attended the meeting.

There were only seven nominations and all seven were accepted, with all committee members unchallenged and reinstated in their current positions: president Graeme Turner, vice president Tim Anders, secretary Christine Ash and treasurer Greg O'Callaghan.

Both Gea Lovell and Leonie Oldmeadow return to the committee and there is one new member, Gerard Blokker.

A former board member said she was "under the impression" Mr Turner would resign, but board member Gea Lovell said it was now "a very cohesive group".

An attendee said the AGM had not been widely advertised to the community and nor had board positions been publicised to seek "new blood".

Prior to the vote, an agenda item to reduce the number of committee members to seven was withdrawn after debate.

The current policy is for a minimum of seven and maximum 11 committee members.

Mr Turner said the rationale for the proposed change was "too many numbers on the committee impedes efficiency", but PICAL members at the meeting broadly disputed this saying the committee must represent the community and should include a broad range of people and skills.

The item was withdrawn after concerns whether the AGM's 22 proxy votes were legitimate, only eligible to vote if they had been members for longer than 10 days.

The concern followed an alleged leap in membership in the lead up to the AGM.

## Agenda

There was also concern an item had been removed from the agenda – an update to the constitution – without informing attendees prior to the meeting.

Mr Turner said the item had been removed based on legal advice.

PICAL manager David Rooks told the meeting his hours will be reduced to 15 hours per week and recently PICAL interviewed for the position of assistant manager to work alongside the manager, which will "lessen the risk and build resilience for the centre".

Members questioned whether the reduction in hours of the centre manager role would impact the Services Australia Centrelink facility, which operates for 30 hours a week and requires a host in the centre manager.

"It doesn't seem right that the manager isn't here for the full time Centrelink is open," the member said.

Mr Rooks said he would take the issue on notice.



# Former manager lodges complaint against PICAL

## COMMUNITY

A former PICAL manager has spoken for the first time about the centre's insolvency crisis, confirming he has lodged a complaint about the neighbourhood house with Australia's industrial relations tribunal.

Former manager Greg Thompson, who worked for four years prior to current manager David Rooks, attended last week's AGM and said he was probably the most impacted of all the historic salary underpayments.

Mr Thompson confirmed he had received a figure and a request to agree to that figure, but had not received detailed calculations.

He told the meeting in the "spirit of openness" he had raised a complaint with Fair Work Australia, the national industrial relations tribunal, (now known as the Fair Work Commission), because of the "lack of information" he had received since October. Mr Thompson said he also knew of at least one other former staff member who had not received any previous contact who had launched one complaint.

"I think there's a third complaint from a former staff member who has received initial contact but not further contact," Mr Thompson said.

"This matter is far from resolved."

PICAL board treasurer Greg O'Callaghan asked whether Mr Thompson knew of the historic payment liabilities during his four years as manager.

Mr Thompson responded when he first started at PICAL the inaccurate pay schedule was already in place and he "raised this issue with the committee of the day".

But because PICAL moved further into social welfare work, this changed the pay schedule of staff.

### Risk

Mr Thompson asked PICAL board presi-



Former PICAL manager Greg Thompson was in charge for four years prior to 2023, when current manager David Rooks took the reins. Mr Thompson is "probably the most impacted of all the historic salary underpayments".

dent Graeme Turner if former staff hadn't yet received notification on wage payments "is it a fair assumption to assume they won't be receiving a debt payment?".

Mr Turner responded that was correct and the historic liabilities didn't impact every staff role.

"All the people identified as impacted have been notified," Mr Turner said, explaining those identified had been based on the criteria of the roles and the legal advice PICAL had been given.

Mr Turner was asked whether there

were any outstanding issues with Fair Work Australia.

Mr Turner said PICAL had self-reported to Fair Work, taking three months to receive an acknowledgment.

"Subsequent to that we've had two requests for information which have been provided and have heard nothing further as yet," Mr Turner said.

"The Fair Work issue is still an open item. What we have decided to do is proceed with paying based on what we understand rather than waiting for Fair Work.

"Our legal advice is Fair Work could take an extended period of time."

Neighbourhood Houses Gippsland network manager Toni Halloran-Lavelle responded saying there was an ongoing risk that could potentially expose the organisation.

"While Graeme said the matter was virtually closed, it is a potential risk that's currently been exposed for the incoming committee of management. It should be noted," she said.

### Further risk?

A PICAL member questioned the committee of management whether there could be an instance in the future when a past employee could challenge their lack of payment: "you can't say without certainty that can't happen".

The member asked what would happen if PICAL paid out now, thinking everyone has been paid, but then someone else comes with a payment claim, "and you don't have the money there" to cover a further payment.

"I thought you have to have the funds for everything and then wait until you know exactly all parties are happy. Some parties may want to take it further. Should you wait?"

Mr Turner said he had asked that question of lawyers and their advice was to proceed with payments.

Mr O'Callaghan said advice from lawyers was it was "unlikely" PICAL would receive Fair Work penalties.

"It's quite unlikely there would be penalties because our lawyers have not seen that before for an organisation like ourselves (a not for profit)," Mr O'Callaghan said.

"If we were a corporate we would get a penalty. There will be an enforceable undertaking, which is common, which means they will keep an eye on us for a year or two ... advising them of payments."

## Go purple this evening

Please join Change for Sam tonight (Wednesday May 7) from 6.30pm in the Jetty Triangle, Cowes for a Candlelight Vigil to honour and remember those killed by family and domestic violence.

The vigil hopes to raise awareness of the issue and provide a platform to come together to share stories, spark hope and inspire change.

There will be live music, and a Rotary barbeque.

Please come along and show your support for Change for Sam, the organisation formed in the wake of Samantha Fraser's death in 2018.

For more information:  
[www.changeforsam.com.au](http://www.changeforsam.com.au)



Please join Change for Sam tonight (Wednesday May 7) from 6.30pm until 8pm in the Jetty Triangle, Cowes for a Candlelight Vigil to honour and remember those killed by family and domestic violence.



APPLY NOW

Community Bank  
San Remo, Cowes and Grantville

## Community Grants Program

A Community Grant can support your organisation when it needs it the most. Applications open Thursday 1 May and close Monday 30 June 2025.

Email [admin@srdfs.com.au](mailto:admin@srdfs.com.au) or head to the San Remo, Cowes or Grantville Community Bank Facebook pages for the link to apply!

**Bendigo Bank**

Community Enterprise Foundation™

Community Grants Program is a management account of the Community Enterprise Charitable Fund ABN 12 102 649 968 (the Fund). The Bendigo Centre, Bendigo VIC 3550. Sandhurst Trustees Limited ABN 16 004 030 737 AFSL 237906, a subsidiary of Bendigo and Adelaide Bank Limited ABN 11 068 049 178, AFSL 237879, is the trustee of the Fund. 1409006-1409008 OUT\_44379675

**Handley & Anderson**  
FUNERAL DIRECTORS  
Servicing South Gippsland & Phillip Island

Locally owned and operated by

**Scott & Sharon Anderson 5672 1074**

Caring and personal 24 hour Service

**Main office Wonthaggi**  
**3085 Loch-Wonthaggi Road, Wonthaggi**  
**(P.O Box 35, Wonthaggi)**

**Cowes office (by appointment)**  
**15 Warley Avenue, Cowes 5952 5171**

Email: [info@handafunerals.com.au](mailto:info@handafunerals.com.au)  
[www.handleyandandersonfunerals.com.au](http://www.handleyandandersonfunerals.com.au)

A.F.D.A.



# Is congestion the future on Phillip Island?

## TRANSPORT

Current high levels of car use are “unsustainable” and so in the next 20 years there will be a doubling of public transport and cycling for resident and visitor travel.

That’s according to Bass Coast Shire Council’s draft Integrated Transport Strategy (ITS), which details a vision for transport to 2045 and which is open for community feedback until this Sunday, May 11.

The long-awaited strategy aims to move to a transport system less reliant on fossil fuels, while allowing for an increasing population – expected to increase by 17 per cent by 2036 – as well as visitor numbers, with 2.87 million visitors per year to the region.

“Without any significant changes to the transport system, there is likely to be over 840,000 kilometres of extra travel per day on roads in 2051 and almost 45,000 additional car trips every day in 2046,” the ITS states.

The Phillip Island Road currently carries an average of about 14,000 vehicles per day.

While travelling by car “will still be the main mode of transport, particularly for trips to work”, a shift to walking, cycling and public transport will “result in 257,000 less ki-

lometres travelled by car”.

There will be a default 30km/h speed limit on all residential streets with the ITS saying this will increase the chance of survival when a pedestrian is hit by a car at lower speeds.

In terms of car parking, where demand is high “and there are no viable alternative transport options”, Council will consider expanding car parking capacity, but the focus will be on making better use of existing parks (see separate story).

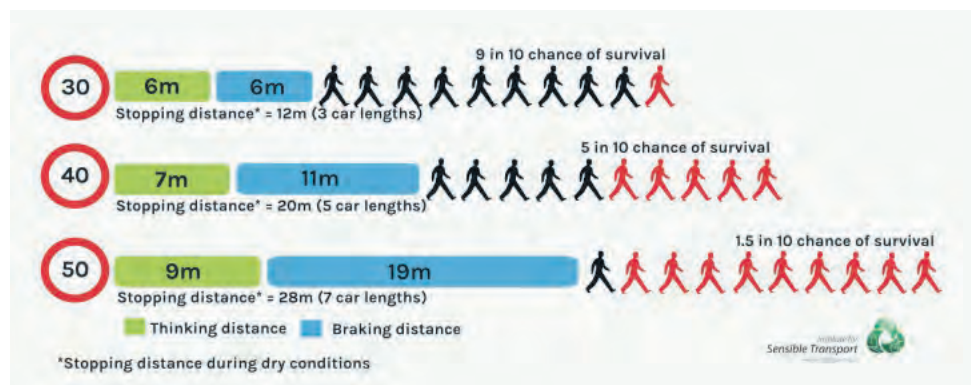
Council will advocate for the school bus services to be extended to the public “to expand public transport options to areas where the community have very limited access to a suitable alternative”.

The ITS does not look at building new transport infrastructure and heavily relies on funding by state and federal governments.

It will act as an advocacy document in seeking funding and improved services, identifying short-term actions (up to five years), through to longer-term (16 years and beyond).

### Public transport

The draft strategy acknowledges the current public transport system is “unreliable and infrequent”.



This graphic shows the chances of survival at different vehicle speeds. With less focus on cars, all new residential areas will be designed for a speed limit of no more than 30km/h under the draft Integrated Transport Strategy.

“Poor integration between local services and regional coaches often leads to frustration,” it acknowledges.

“There is also a lack of integration between public transport and the ferry service between Stony Point and Cowes.”

As such the ITS has a target of at least 85 per cent of residents in towns living within 800m of a bus stop, with a bus that comes at least 12 times per day.

The strategy states council will advocate for more frequent V/Line coaches to Cowes and will advocate for the pilot on-demand transport service for Phillip Island and San Remo, which was first mooted in 2022.

“Phillip Island is a major tourism drawcard for

Bass Coast and the region. However, a lack of transport options means many people drive, even where they do not want to.

“This creates congestion, particularly during tourist seasons and major events.”

### Walk, cycle

The strategy calls for an increase annual investment in walking and cycling to \$90 per resident by 2030.

“The existing network of walking and cycling infrastructure limits people’s ability to see active transport as a first choice for short trips.

“Concerns around sharing the road with cars limit people’s willingness to use the bike for short trips.”

Council will install

bike lanes when resurfacing roads, where possible, explaining residential streets will be low-stress and low-speed, with most streets designed decades ago and “reflect the priorities of past eras”.

The ITS also states:

- There is potential for council-managed carparks at Potters Hill Road and Punch Bowl Road, which have been proposed for upgrading in the Yallock-Bulluk Marine and Coastal Park;
- Council’s goal is to eliminate fatalities and serious injuries on Bass Coast roads by 2050;
- While driverless technology is yet to have an impact on Bass Coast, Infrastructure Victoria and the National Transport Commission are prepar-

ing for their operation on public roads;

- Grow the number of public EV charging stations in Bass Coast;
- Increase micromobility devices such as e-bikes and bike tourism, which “enable users to travel over greater distances and topography”;
- In Bass Coast, transport accounts for about 30 per cent of all emissions, and is expected to be the largest single source by 2030.

### Consultation

Last year, community consultation was held to develop the draft ITS, which received 346 survey responses.

“The community said they want to be able to walk, cycle and use public transport more,” the draft states.

“Even for those who do use the car, one in four people would prefer to use another mode, if it was made more convenient and safe.

“Almost half the people council spoke to said they wanted better public transport options.”

The draft strategy will go to council mid-year, and then the community will once again be consulted to ensure “we have captured what you told us”.

Details: [engage.bass-coast.vic.gov.au/its](https://engage.bass-coast.vic.gov.au/its)



The SEC is back.  
We’re supporting Victorian homes to go electric and save on energy bills.  
Find out how you can make the switch.

[secvictoria.com.au](https://secvictoria.com.au)



Authorised by the Victorian Government, 1 Treasury Place, Melbourne





At peak times cars flood streets in Cowes, but a new strategy says the solution is not always to build more car parks, but to make better use of current parking.

## Put the brakes on new car parks: report

### TRANSPORT

Building new carparks is not a key priority, but rather making better use of existing carparks, according to Bass Coast Shire Council's draft Integrated Transport Strategy (ITS).

The draft report states across Cowes only 48 per cent of parking bays are occupied at peak, while in San Remo occupancy is 44 per cent, with congestion often caused by cars cruising for a park.

The ITS – which is open for community feedback until this Sunday, May 11 – states while there are “pockets of very high car parking occupancy, it is rare for the majority of the township to have consistently high occupancy levels”.

The draft says instead of building more car parks, council will “better manage parking”, with use of low occupancy car parks to “help balance supply and demand”.

The strategy says where car parking demand is high, and there are no viable alternative transport options, council will consider expanding car parking capacity.

However, building more parking spaces “in an attempt to absorb spikes in demand during a very small portion of the year” is not a good use of assets, is costly and does not add to the attractiveness of towns.

“Council know reliable parking options in the main streets is important to the community,” the draft explains, acknowledging parking pressures create stress.

“When the community require more parking, council will ensure it is in appropriate locations that enhance pedestrian connectivity and boosts economic opportunities.”

The strategy recommends:

- Strict parking restrictions in high demand areas – “Council will use time

limits in busy commercial streets to enable a healthy turnover of parking bays, to assist motorists looking for a park”;

- Directing longer-term parking to the perimeters of town centres. In residential streets on the edge of busy towns, there could be restrictions with permit zones, “to protect the ability of residents to park in their streets”;
- Expand the use of smart parking – already used in Cowes – to give real time information to motorists about parking availability. This will reduce cruising to find a park; up to 30 per cent of all traffic is caused by people seeking no-fee kerbside parking space;
- Mobile License Plate Recognition – which uses cameras and software to identify license plates – could be used in enforcement to detect the length of time vehicles have stayed in a particular parking space; and
- Council will work with the Department of Education to investigate the potential for school grounds to be used as overflow car parking during school summer and Easter holidays.

### More solutions

Controversially, council will also consider waiving more car parking requirements in new developments under the planning scheme.

“These state-wide requirements sometimes lead to an oversupply of car parking. This adds unnecessarily to the cost of developments, exacerbating affordability issues.

“To support development, and avoid a needless oversupply of parking, council will approve applications to reduce the parking requirement where appropriate.”

Once again, paid parking is flagged “to help moderate demand and increase turn over”.

“Prior to embarking on

a paid parking program, it is important for council to think carefully about what is the objective for charging for parking.

“If it is about reducing car use, it can be more effective to remove the parking. If it is revenue generation, then paid parking can be a useful strategy, in certain high demand areas.”

The draft ITS recommends council offer a “greater diversity of travel choices” for residents and visitors, including EVs, ebikes, micromobility such as scooters, better public transport and on-demand buses (see separate story).

### Squeeze?

There are 2689 parking bays in Cowes, and across the town 48 per cent of bays were occupied at a peak time, according to a study in the ITS.

There is high demand for parking on The Esplanade west of Thompson Avenue, with all parking occupied at peak times.

In contrast, a high proportion of unoccupied car parks can be within 150-metres towards the west end of The Esplanade.

Parking near the Cowes Recreation Reserve is higher in off-street car parks, at up to 81 per cent. In San Remo, there are 884 parking bays, with 44 per cent occupied at a peak time.

There are 910 car parks in walking distance of Newhaven, with about 22 per cent occupancy at a peak time.

In San Remo and Cowes, seven per cent of residents walk to work, and in Cowes two per cent cycled.

There are many who commute to and from Bass Coast, with the majority (76 per cent) to Gippsland region to go to work.

About 22 per cent of trips to work were between Bass Coast and metropolitan Melbourne.

## Guess how many cars use the PI Road

### TRAFFIC

How many vehicles do you think currently use the Phillip Island Road every day?

According to the Department of Transport and Planning (DTP) – which currently has a series of traffic monitoring cameras installed at Newhaven and Cape Woolamai – the answer is an average of about 14,000, including 900 heavy vehicles.

DTP executive director Beth Liley said the cameras surveyed traffic until May 6, with the data to be used to identify traffic changes over time and inform its planning and engineering decisions for new infrastructure and safety improvements.

“We’re currently working with Bass Coast Shire Council on the long-term transport strategy for the Phillip Island Road corridor,” Ms Liley said.

“We monitor traffic on the island to help inform our planning for future infrastructure and safety improvements in San Remo and Phillip Island by tracking road use and changes over time.”

In 2020 the transport department released proposed upgrades for Newhaven and San Remo – including four lanes, new roundabouts, compulsory land acquisition, even reclaiming a section of Western Port bay.

While San Remo supported many of the changes, Newhaven businesses



In 2016 a VicRoads director explained Phillip Island traffic was growing at one of the fastest rates in the state and the community must decide if it wants “Gold Coast” style road duplication. The Department of Transport is currently monitoring traffic on the Phillip Island Road using a series of cameras, with a view to road developments.

rejected the upgrade plans.

The group of businesses included Rip Curl, The Island Accommodation, YHA Phillip Island, and Phillip Island School Camps who were set to lose land about 90 metres long and up to nine metres deep under compulsory acquisition as part of the plans.

The group at the time called for “significant” changes, saying the roads authority needed to work

with local residents, rather than applying “city solutions” to “our magical island community”.

In about 2016 the department investigated doubling the Phillip Island Road to four lanes. A VicRoads director at the time explained Phillip Island traffic was growing at one of the fastest rates in the state and the community must decide if it wants “Gold Coast” style road duplication.



Visiting from North Wales, Liz Bryan managed to catch a photo of a humpback whale rolling through the waves next to local surfers last week.

## From Wales to whales

### WILDLIFE

Visiting from North Wales, Liz Bryan managed to catch another whale visitor – a humpback at Cape Woolamai on May 1.

Liz's parents John and Jennifer Dawson retired to Newhaven 25 years ago, and Liz's trip to Phillip Island coincided with celebrations for her father's 91st birthday.

Sighting the whale added an extra dimension to

the visit.

“I read about an early whale sighting on the Phillip Island Whale Watchers Facebook page,” Liz explained.

“Then Holly Biggs posted about whales off the Colonnades.”

Liz grabbed her camera and headed to Cape Woolamai and managed to get to the Anzac's carpark in time to see the whale “with the help of a very kind surfer”.

“The photos tell the rest

of the tale,” she said, her shots capturing the whale rolling through the waves next to local surfers.

Liz currently lives in North Wales and said the Welsh talk of “hiraeth” – “a yearning/belonging to the land”.

“I am so one with that statement. I get rather emotional returning to my mother country and the place where we holidayed for as long as I can remember.”



# A very unhappy birthday

## INFRASTRUCTURE

A group of local fishers have gathered at the Newhaven Jetty to mark the one-year anniversary of their campaign to save the beloved community jetty.

Organised by the self-described Fishing Nana, Amanda Keilar, the group including Saltwater restaurant owner Ben Dennis, Wolfgang Platzter from the San Remo Fisherman's Cop and local residents, were joined by Nationals MP Melina Bath, just back from a trip to Turkey for Anzac Day celebrations.

"Everyone has a different involvement with this jetty, but we all know the importance of it for humans, for children, and generations, but also for tourism and for commercial enterprises," Ms Bath said.

She praised the passion of the local community, who launched a petition and gathered hundreds of signatures, which resulted in the issue being debated in State Parliament.

"I believe that it's because of your actions and your commitment, and Amanda and Ben speaking to media, that we've been able, through the Parliament, to at least get the government to go back in and have a more detailed underground inspection of the jetty."

Ms Bath said the jetty had been on the Parks Victoria priority list for some time before its closure.



A group of local fishers met with Nationals MP Melina Bath at the Newhaven Jetty to mark the one-year anniversary of their campaign to save the beloved community jetty.

"Leaving the jetty to disintegrate behind mesh fencing is unacceptable. This much-loved public asset deserves to be upgraded and reopened."

Amanda said it was "a matter of continually rattling the cages and saying, we're not going to just sit down and watch it fall into the ocean".

The government commissioned a detailed underground inspection of the jetty in March this year, and Amanda said she believes the cost to fix the jetty "is a lot less than they (the government) expected".

## Safety

Ben Dennis mentioned the two deaths over Easter, when people were swept off the rocks at Punchbowl, saying the money spent on rescue efforts probably outweighs what is needed to repair the jetty.

"If they could fish off here safely, why remove this jetty, because then these kids have to go onto those dangerous coastal rock ledges."

Ben was also critical of the time it took the government to organise the jetty inspections, saying he suggested it over a year ago.

The group agreed they did not want to be back next year, marking the two-year anniversary.

"We're not happy about our unhappy birthday," Ms Bath said.

"It needs to be open by next year. We don't want to be standing here in another year's time."

Amanda said having the jetty reopened would take the pressure off the busy San Remo wharf.

"It's not a dedicated angling platform. You've got Wildlife Coast Cruises, you've got the jet boat, the commercial boats,

you've got jetty jumpers.

"Throwing the line in is not really a viable option over at San Remo."

She said the Newhaven Jetty provided an ideal place for fishing, as you could cast a line "straight out into the deep channel".

Local fisher George Papas said it was disgraceful in an area as famed for tourism as Phillip Island, that one of the first sights greeting visitors was the "disgusting gate and decrepit jetty".

"I've grown up pulling my dad's boat up on the slip here, and coming over and fishing off this jetty, and it's a staple of this community."

He said the government should be embarrassed by the state of the jetty, describing it as "symbolic of neglect".

George also described the jetty as "a haven for the local community", providing a vital way to relax and switch off from the pressures of the modern world.

"I think the mental health thing is huge," he said.

Another resident said leaving the jetty locked off to rot away was a safety issue.

The group called on the government to release the results of the latest inspection and costings for repairing the jetty, as well as a timeline for the reopening.

Ms Bath promised to raise the issue again in the Parliament, reiterating the community's demands.

FSA/DETS2011

JD04590AA

**Best Start  
Best Life**

## Free Kinder: Enrol for 2025.

Free Kinder is available for three- and four-year-old children in Victoria at participating services. Free Kinder is available in sessional (standalone) and long day care (childcare) settings, saving families up to \$2,563 each year, per child.

At kindergarten, your child will:

- learn language, literacy and numeracy skills through play, art, music and dance
- learn to express themselves and make friends in a safe and caring environment
- build skills and confidence before primary school.

Contact your preferred kinder service or local council to learn about how to enrol for 2025.

Visit [vic.gov.au/kinder](https://vic.gov.au/kinder)





On election night, Liberal candidate Mary Aldred with her mum Margie, brothers James and John and sister Lucy, thanked her family and volunteers "who have supported me from day one".

# Monash still not called

From page 1

The Greens saw their primary vote drop dramatically, falling from 9.86 per cent in 2022 to just 4.51 per cent.

While One Nations first preference percentage was up slightly – 7.82 per cent from 7.54, the actual number of votes the party received dropped.

Clive Palmer's Trumpet of Patriots didn't resonate with voters, with just 2.39 per cent of the primary vote, about half the amount won by the United Australia Party (Clive's previous incarnation) at the 2022 election.

The remaining candidates combined picked up just over five per cent of the primary vote, with Legalise Cannabis on 3.35 per cent, while Family First was just 1.75 per cent.

## Candidates

Mary Aldred told supporters she put her "best case forward in Monash" and while things looked promising, "I want to respect the job the AEC has in front of it before commenting further on the outcome of the election".

She thanked her family and volunteers "who have supported

me from day one".

Labor candidate Tully Fletcher said his team was watching the count with interest, noting the "final distribution of preferences will be complex and could end in an unexpected result".

Mr Fletcher said the national result showed Australians "comprehensively backed Labor's plan to build over Peter Dutton's promise to cut", and thanked everyone who backed the Labor team.

Independent candidate Deb Leonard admitted she would "have to see some pretty favourable preference flows to get over the line".

She thanked every volunteer and supporter of her campaign and said, "we did absolutely everything we could do and left nothing on the table," adding the campaign showed "Monash will not be taken for granted anymore".

## Island votes

Deb Leonard polled strongly at booths on Phillip Island and San Remo, as well as Kilcunda, Wonthaggi and Inverloch, picking up as much as 37 per cent of the vote in some booths.

If those results had been replicated across the electorate, she would have finished in first or second place in the final tally.

Mary Aldred was the second favourite for island and San Remo voters, with the two female candidates well ahead of Labor's Tully Fletcher.

Former MP Russell Broadbent was sent a resounding message that his time was done, receiving just over seven per cent of the island's votes.

However Mary Aldred steamed ahead of the field in areas like Leongatha and Warragul, where she received between 35 and 40 per cent of first preference voters.

The final days of the campaign were marred with reports of intimidation at the Cowes polling booth and a negative campaign by the Liberal Party targeting independent Deb Leonard, painting her as a proxy for the Greens.

At the pre-polling booth in Cowes, people cast their votes in record numbers.

By election day (May 3), 7609 people had already voted in Cowes, an average of 845 per day.



There were more Cape Barren geese culled on Phillip Island in the past year compared to the previous year.

# Wildlife culls, a delicate balancing act

## ENVIRONMENT

The number of legal, lethal wildlife permits issued for Phillip Island has dropped, with about 1100 animals in total culled across four species from 30 permits.

According to newly-released figures by the Conservation Regulator, Authority to Control Wildlife (ATCWs) permits issued on Phillip Island for 2024 were considerably lower than the previous year, when the total culled were more than 1420 across six species from 43 permits.

There were, however, more Cape Barren geese culled in 2024 than 2023.

In total there were 14 permits issued to cull 741 geese, compared to 573 the year before.

There were 11 ATCWs issued for 290 black wallabies (in 2023 there were 415).

Four permits were issued for 60 brushtail (322 in 2023) and one permit for 10 ringtail possums.

Unlike in 2023, there were no culls of silver gulls or black swans and in that year there was also a single permit for an Eastern grey kangaroo.

A Conservation Regulator spokesperson said the number of ATCWs issued varied each year, depending on changing environmental conditions such as rainfall and impacts on food and water availability for wildlife, and the actual number controlled could be lower.

"Landholders and managers are able to apply for an authority to control wildlife when wildlife is causing damage to their property, poses a risk to human health and safety or is negatively impacting other biodiversity values," the spokesperson said.

"It is illegal to destroy or wilfully disturb protected wildlife without authorisation under the Wildlife Act 1975."

The Conservation Regulator said it assesses "all authority to control wildlife applications to ensure they meet the requirements of the Wildlife Act 1975".

This includes "ensuring all practical non-lethal control measures have been exhausted", before applying for an ATCW for either lethal or intrusive non-lethal control.

Examples of a non-lethal control option is excluding ani-

mals with a fence.

All ATCWs include enforceable conditions to ensure animals are controlled humanely.

Anyone with information about illegal disturbance of wildlife is encouraged to contact Crime Stoppers Victoria on 1800 333 000.

## Wildlife plan

The figures come after an update of Phillip Island's Wildlife Plan, released earlier this year, showed populations of wallabies, possums and Cape Barren geese were increasing on Phillip Island and methods to stop their impact on the environment were largely failing.

The plan – originally released in 2021 by Phillip Island Nature Parks, Bass Coast Shire Council, farmers and the State Government – details measures aimed at balancing populations of these species.

The third update of the plan stated goose numbers in the past year total 3120, which is 354 more since the 2023 survey.

Wallaby numbers on the Summerland Peninsula have grown by about 750 since the last census a decade ago, to 1227, "with densities increasing from two to three individuals per hectare".

Possum numbers on the Summerland Peninsula show a "highly abundant" 2.3 per hectare, suggesting they have spread to a wide range of habitats across the island, even open habitats without woodland.

A study on possum browsing of trees showed on the Summerland Peninsula, the average survival rates of unguarded trees were one per cent after 12 months, compared to survival rates of guarded plants averaging 44 per cent after 12 months.

For Cape Barren geese, the plan states investigations into the use of decoy crops to relieve grazing pressure on surrounding agriculture show "this would not be an effective strategy used on its own, but would be better suited as part of an integrated approach".

Also trials to evaluate commercially-available deterrents – including Sen-Tree and D-Ter – showed both products were ineffective at reducing the impacts of browsing from Cape Barren geese and wallabies.



Independent Deb Leonard with her supporters on Saturday night at the Westernport Hotel. Leonard said she would need "pretty favourable preference flows to get over the line".



# THE PUT YOURSELF OUT THERE BIT

Head for the hills and discover Victoria's regional events. Try your hands (and feet) at various things you've never done before. You could find yourself cider quaffing, tulip sniffing, star gazing, maybe even grape stomping.

**VICTORIA** EVERY BIT  
DIFFERENT

[VISITVICTORIA.COM](https://www.visitvictoria.com)



# Increasing roadkill leads to state inquiry

## WILDLIFE

Phillip Island's volunteer wildlife rescue has welcomed a new Victorian government parliamentary inquiry into roadkill.

The inquiry, which is open to public submissions until May 30, is looking at both paid and volunteer organisations' contributions to animal rescue and rehabilitation, as well as preventive measures and incident reporting.

Wildlife Victoria responded to more than 1300 sick, injured and orphaned wildlife – the vast majority roadkill – on Phillip Island last year, across 120 species.

Volunteer rescuer Colleen Gilbee – who has been volunteering on the island since 2000 – said the local wildlife death toll was taking an increasing financial and emotional toll, costing her thousands of dollars every year, with about 70 per cent of animals needing to be euthanised because of the extent of their injuries.

"I'm glad they are looking into this now," said Colleen, who runs Wildlife Rescue and Rehab Shelter Phillip Island and Bass Coast.

"It would be good if the government saw what rescuers actually do and gave rescuers, carers and shelters more ongoing financial support, which isn't hard to get their hands on.

"As unpaid volunteers it is very hard to keep affording to do so many rescues with all the costs that come with what we do, such as petrol and euthanasia equipment."

Colleen said Phillip Island needed better signage in high impact areas, "with photos and who to call for help if you hit wildlife".

"We need better education on



Over the past 25 years, Colleen Gilbee has helped more than 3000 animals annually, since 2019 running Wildlife Rescue and Rehabilitation Shelter Phillip Island and Bass Coast with a handful of volunteers.

reporting injured/orphaned wildlife especially hit by cars incidents, with the amount of tourists we have as well."

Inquiry chair Georgie Purcell said new measures to protect wildlife were needed due to increased overlap of urban areas on the environment and rapid destruction of habitat, which was moving animals closer to populated areas, adding in

Victoria they were "hit by vehicles at alarming rates".

The true toll of this issue is unknown in Victoria, with currently no established mechanism for reporting incidents when an animal is struck by a motor vehicle, she said.

"Currently our response to wildlife is an afterthought at best, but with careful consideration at the early stages we have the ability to heavily reduce the road toll," Ms Purcell said.

"The overworked wildlife sector is burnt out and many volunteers are forced to work multiple jobs to self-fund their transport and rescue equipment in order to perform the work."

The impact of road strike incidents on motorists, including major traumas and vehicle damage is also being considered by the inquiry.

## Support

Meanwhile, Wildlife Victoria and Wildlife Recovery Australia have joined together for a nationwide campaign, I Vote for Wildlife, calling for the federal government to commit to establishing a national framework for wildlife rescue and rehabilitation.

For all wildlife on Phillip Island call Wildlife Victoria on 03 8400 7300.

Sick or injured wildlife can be taken to the Koala Conservation Reserve between 10am – 4pm daily or to the Penguin Parade Visitor Centre from 4pm until closing time (about two hours after sunset) or to a local vet before 5.30pm.

[penguins.org.au/conservation/wildlife-response/](https://penguins.org.au/conservation/wildlife-response/)

Details: [parliament.vic.gov.au/news/infrastructure/roadstrike/](https://parliament.vic.gov.au/news/infrastructure/roadstrike/)

# Celebrate your volunteers with a \$100 micro-grant

## COMMUNITY

Bass Coast Shire Council is supporting National Volunteer Week (May 20-26) by offering micro-grants of up to \$100 to help local community groups celebrate the amazing efforts of their volunteers.

Whether it's a morning tea, a sausage sizzle, a small gift, or promoting your group's thank you event, these micro-grants are designed to help make planning your thank you efforts that little bit easier.

Bass Coast has one of the highest volunteering rates in Victoria, with 18 per cent of adults actively volunteering – well above the state average of 13 per cent (ABS Census 2021).

From coaching junior sport to planting trees, delivering meals, and running community events, volunteers are the heart and soul of our region.

National Volunteer Week is Australia's largest annual celebration of volunteering; it highlights the important role of volunteers in our community and invites people not currently volunteering to give

it a go. This year's theme is 'Connecting Communities' – highlighting how volunteering creates lasting relationships that enrich lives and strengthen communities.

Planning an event that's open to the rest of the community is a great way to say thank you and celebrate the spirit of volunteering.

If you're hosting an event during National Volunteer Week, don't forget to list it on Council's events page so the whole community can join in. Bass Coast Shire Council is excited to attend events where possible and celebrate the volunteers who make Bass Coast such a special place.

To be eligible for a micro-grant, applicants must be incorporated not-for-profit groups and cover any costs above the funding provided. The event or activity must take place during National Volunteer Week 2025.

Apply now and show your volunteers just how valued they are.

For more details and to apply, visit: [basscoast.vic.gov.au/volunteerweek](https://basscoast.vic.gov.au/volunteerweek)

VICTORIA'S  
CONTAINER DEPOSIT  
SCHEME

WIN  
A MILLION!  
CENTS

5x \$10,000 cash prizes to be won  
Every return of 50 containers or more = 1 entry

ENTRIES CLOSE  
SUNDAY, 15TH JUNE

SCAN TO  
ENTER AND  
FOR T&Cs



Entry open to Victorian residents only.



# Rewilding the island – a community celebration

## EVENT

Phillip Island Nature Parks is inviting the community to celebrate the extraordinary progress in reintroducing and safeguarding threatened species and restoring biodiversity on Phillip Island.

"Thanks to the collective efforts of community groups and Phillip Island Nature Parks, among others, Phillip Island is making great strides in restoring the natural environment," a Nature Parks spokesperson said.

"If you are interested in conservation, ecosystem management and local wildlife, then this social event is not to be missed."

The event will be held at Phillip Island Winery on Thursday May 15 from 6pm to 10pm.

Guests will enjoy dinner, presentations, and plenty of opportunities to socialise.

Presentations will include Dr Duncan Sutherland, Senior Scientist at Phillip Island Nature Parks, on the reintroduction of Eastern barred bandicoots and bush stone-curlews on Phillip Island, and Anne Davie (OAM) on sustainable farming using a variety of methods, including planting over 20,000 trees on the family farm Bimba-



Presentations at the Rewilding event at Phillip Island Winery on May 15 from 6pm, include the reintroduction of the Eastern barred bandicoot to the island.

deen, in partnership with Phillip Island Landcare.

After 25 years of eradication efforts, Phillip Island was declared fox-free in 2017. Combined with years of conservation and regeneration of the landscape, this milestone paved the way for the reintroduction of threatened species, Nature Parks said.

"Since being released in 2017, the Endangered Eastern barred bandicoot continues to thrive, safe from the threat of fox predation."

"The Phillip Island Nature Parks citizen science 'EBB Sightings Portal' provides a platform for our community to report

wild bandicoot sightings and help researchers understand the spread of the species across the island," the Nature Parks spokesperson said.

"In a monumental effort for conservation, last year saw the reintroduction of Critically Endangered bush stone-curlews to the island with the long-term goal to improve the viability of the species in south-eastern Australia. The birds are being monitored by researchers who plan to release more birds over a three-year period."

### Tickets

To learn more and to celebrate the rewilding



Last year saw the reintroduction of Critically Endangered bush stone-curlews to the island. Celebrate this success and the restoration of the island's biodiversity at a special event on May 15 at the Phillip Island Winery from 6pm. Book your ticket now.

achievements, please book your tickets as soon as possible, as places are limited.

Tickets are \$66 per person (includes shared-plates dinner) and can be booked at [trybooking.com/events/landcare/1368072](https://trybooking.com/events/landcare/1368072) or by scanning the QR code.

Drinks are available to purchase at bar prices.

Take home bottles of wine with labels illustrating reintroduced species will also be available for purchase on the night to raise funds for Phillip Island Landcare Group and the Penguin Foundation.

Ticket sales and donations will go towards Phillip Island Landcare Group

and the Penguin Foundation for continued conservation to increase biodiversity on Phillip Island.

The Phillip Island Landcare Group was established in 1987 as a community, volunteer-led group that works to protect and restore the island's natural environment.

Goals include promoting the conservation and restoration of native biodiversity and encouraging sustainable agriculture, business practices, and lifestyles. Visit [phillipislandlandcare.org.au](https://phillipislandlandcare.org.au) for more information.

The Penguin Foundation is dedicated to safeguarding Phillip Island's

extraordinary biodiversity.

Through vital conservation, animal rehabilitation, research, and education initiatives, it helps protect the island's unique ecosystems. Home to diverse wildlife populations, including the world's largest little penguin colony, Phillip Island's coastal, woodland, and wetland habitats are among Victoria's most cherished landscapes. By supporting the not-for-profit Penguin Foundation, donors become essential partners in ensuring this remarkable island thrives for generations to come. Visit [penguinfoundation.org.au](https://penguinfoundation.org.au) for more information.

/ Sponsored article /

## Melanie set for a "Bloody Long Walk"

### FUNDRAISER

Melanie Flowers is in training for a very long walk.

In September this year, she's heading off to walk the Camino – an 800km trail across Spain.

But before that, she's tackling "The Bloody Long Walk", a 35km fundraiser for the Mito Foundation, to help Australians living with mitochondrial disease.

The event on May 18 will see Melanie walk from the Yarra Bend to St Kilda, and she's set herself a target to raise of \$1000.

She formed a team with her daughter Olivia and the rest of the family will be along the route to cheer them on.

Melanie said she first became aware of Mito when Olivia worked at Turn the Page bookshop in Cowes. Former owner Lois Gaskin suffers from the disease, which robs the body's cells of energy, causing multiple organ dysfunction or failure.

She's hoping the local community will sponsor her walk, to raise money to fund research into treatments and cures for the disease.

You can donate online at: [event.bloodylongwalk.com.au/fundraisers/melanieflower/melbourne](https://event.bloodylongwalk.com.au/fundraisers/melanieflower/melbourne)

### Camino

Melanie said the walk supported an important cause, and it also fitted in well with her training for her Camino trip.



Melanie Flowers is tackling The Bloody Long Walk on May 18, a 35km fundraiser for the Mito Foundation, to raise funds to help Australians living with mitochondrial disease. To sponsor her, scan the QR code.

To get herself match fit, Melanie has been walking to and from work each day (an 8km round trip).

"It's great to get that space to clear my head before and after work," she said.

"When I started, I used to wear headphones, but now I'm enjoying the birds."

"The hardest thing is the time factor – finding that extra hour and a half. The walk's become one of the highlights of my day."

She said the decision to start walking every day has changed her perspective.

"Now, if anything is less than an hour's walk, I think, I'll just walk it. I'm

saving a fortune in fuel."

She's also tackled longer local walks, such as the George Bass Coastal Walk, the Cape Woolamai walk and the Wonthaggi Rail trail, and walked from San Remo to her home in Wimbeldon Heights.

Taking long service leave after 18 years working as a teacher, she decided the best way to clear her head was to literally, take a long walk.

She said as someone who enjoys hiking, the Camino "seemed like the ultimate hike".

While her family will join her for a portion of the trip, she said it is mostly her own "personal pilgrimage".

"I haven't been to Europe before, so this is a chance to explore it on foot, get up close to everything and meet the locals, rather than driving past on a bus with tour guides."

She has been carrying her Camino backpack on her walks, in preparation for the 800km hike, which usually involves walking around 20-30km per day.

"The Bloody Long Walk" on May 18 is both an opportunity to test herself before taking on the Camino, and to support a very good cause.

Find out more about mitochondrial disease: [mito.org.au](https://mito.org.au)

To donate to Melanie's walk, scan the QR code or go to: [event.bloodylongwalk.com.au/fundraisers/melanieflower/melbourne](https://event.bloodylongwalk.com.au/fundraisers/melanieflower/melbourne)



## Candlelight Vigil

Wednesday, May 7, 6.30pm - 8pm

## Jetty Triangle, Cowes

Join Change for Sam to remember and honour those who have been killed by domestic and family violence.

An evening of reflection including free barbeque, cake stall and live music.

Funds raised on the night will go to Change for Sam.

 **Change for Sam.**

[www.changeforsam.com.au](https://www.changeforsam.com.au)

[www.facebook.com/changeforsam](https://www.facebook.com/changeforsam)







Newhaven College's production of *Xanadu*, with stars Archie Robson and Cecily de Gooyer, supported by a few of the ensemble Scarlett Hill, Georgia Sanders, Madison King, Holly Martelli and Charlee Pedersen.



Newhaven College Year 12 student Cecily de Gooyer stars in the school production of *Xanadu*, playing the muse Clio/Kira.



The production of *Xanadu* had very impressive costumes, designed and created by volunteer parents, staff and friends. From left: Aisha Glass as Aphrodite, Yu Yao as Zeus, Finn Farley as Thetis and Tilly Stecher as Hera.

# Xanadu rolls into town

## EDUCATION

Last weekend, family, friends and community members were entertained by the singing and dancing (and roller skating) spectacle of Newhaven College's Senior School production of *Xanadu*.

The glittering, tongue-in-cheek celebration of dreams, destiny, and disco-drenched romance captivated local audiences. Inspired by the cult 1980 film, *Xanadu* was transformed into a Broad-

way musical in 2007, with Director, Karen Milkins-Hendry and Musical Director, Matt Goss leading and inspiring a high-quality performance.

Through the fantastical tale of Kira (played by Cecily de Gooyer), a muse from Mount Olympus who descends to Earth to inspire a struggling artist, Sonny (played by Archie Robson), *Xanadu* explores themes of creative passion, the courage to follow one's heart, and the magic that can arise when

we dare to embrace the ridiculous.

Every student on stage gave it their all.

Along with the leading cast, Cecily de Gooyer (Kira/Clio), Archie Robson (Sonny) and Felix Fothergill (Danny) were the Muses played by Nissa Campbell Walker (who was stunning as the menacing Melpomene), Indigo Aurora (Calliope), Jude Fisher (Terpsichore), Aoife O'Connell (Thalia), Meyanna Christensen (Euterpe), Tilly Russell

(Erato), Finn Campbell Walker (Urania) and Elleah Rodgers (Polymnia).

Other critical roles were performed by Shae Foster, Yao Yu, Finn McLean, Tilly Stecher, Finn Farley, Aisha Glass, Bede Prideaux, Sequoia Patterson, Harper Stephens and Angelina Mumby.

With the support of a highly energetic dance ensemble (the Sirens) and ensemble cast, the show was rich in talent from the youngest student up.

The choreography by Leasal Liddle-Pirouet, design by Tad Hendry and wig specialisation by Rafal Pyka were backed by magnificent costumes created by Steph Thornborrow and volunteer Robyn Rumbelow, along with many staff, parents and students who helped create the costumes and sets.

Principal Tony Corr was thrilled with the final performance.

"Our students and staff have shown incredible

dedication, passion and resilience. The final result is more than just a showcase of talent; it is a celebration of the performing arts as a vital and dynamic part of our school."

Newhaven College thanked all the staff, students, parents and community members who assisted with the production, everyone who came along to the show and the Wonthaggi Union Community Arts Centre for providing the venue and ticket sale support.



Newhaven College's production of *Xanadu* was supported through out by the dance troupe, Olivia Helps, Ruby King, Mia Bowtell, Phoebe Helps and Abbie Wines.



The muses were an integral part of the story of Newhaven College's production of *Xanadu*. Elleah Rodgers, Meyanna Christensen, Tilly Russell, Aoifa O'Connell and Finn Campbell Walker.



Incredible props and sets helped frame the Newhaven College production of *Xanadu*, with Cecily de Gooyer riding Pegasus. More photos at [pisra.com.au/education](http://pisra.com.au/education)

## FRIENDS OF CHURCHILL ISLAND SOCIETY GENERAL MEETING

Saturday May 10, 2025. 1.30 – 3.30 p.m.

A brief Special General Meeting will be held first.

Churchill Island Visitor Centre function room.

### SPECIAL GUEST SPEAKER:

Kate Cleeland, local pianist, singer, dancer.  
"The Gershwin era comes to the island"

All welcome. RSVP: Christine Grayden,  
secretary@focis.org.au  
or phone 0400 900 612.

Friends Of Churchill Island Society Inc.

FOCIS

## Gershwin talk for Churchill Island friends

### COMMUNITY

Back in the days before television, Phillip Island residents would dress in their finery and head off to their local hall each weekend to dance the night away. After a big supper of cakes and scones provided by all the good cooks in the district, they'd all wander home in time to milk the cows in the morning.

Thanks to wind-up gramophones, which often used boxthorns as needles to play 78 rpm records, everyone managed to keep up with the latest music trends in Australian and overseas. Lots of people also played instruments and formed bands to play at the dances. Many Phillip Islanders met their future wives or husbands at a local dance.

The next Friends of



Noeline, Oelena and Kate, who play the piano every Friday in the Amess House dining room at Churchill Island. Kate will talk about the Gershwin era at the May 10 FOCIS General Meeting.

Churchill Island Society (FOCIS) General Meeting will pay tribute to this era. The meeting will

start at 1.30pm on May 10 at the Churchill Island Visitor Centre function room. The speaker will be

Cape Woolamai resident Kate Cleeland, who has a background in choirs, musicals, opera and dance, but fell in love with jazz through George Gershwin's "Rhapsody in Blue".

In the late 1920s the two bachelor Jeffery brothers resident on Churchill Island went to the local dances by rowboat, or by horse and jinker at low tide across the tea tree track to below St Paul's Boys Home. Bob and Ted Jeffery Snr worked on Churchill Island for Gerald Buckley from 1929-1936. Kate's step-aunt Rita Cleeland married Ted Jeffery Snr.

All welcome. For more information and to RSVP, contact FOCIS secretary Christine Grayden. Email secretary@focis.org.au or phone/text 0400 900 612.

/Sponsored article/





Purple Hen Wines' Rick Lacey recently received the Eckersley Award for outstanding contribution to the Gippsland wine community.

## Meet the Maker: Purple Hen Wines

### BUSINESS

Nestled on a picturesque peninsula overlooking Swan Inlet, Churchill Island, and Denne Bight, Purple Hen Wines has been crafting award-winning cool-climate wines since 2004.

Purple Hen began when Rick and Maira Lacey traded Melbourne city life for the beauty of Phillip Island. In 2001, they planted their first vines. Without formal winemaking experience, they focused on creating a vineyard that reflects the region's character and potential.

Their hard work paid off, and by 2004, the first wines were released with help from local legend and now owner and winemaker of Dirty Three Wines, Marcus Satchell. Over the years, winemakers Pip Farr and currently Dominic Kearton have brought their expertise to the team. Dominic joined in 2019 and now plays a key role in the winery's success through working in many aspects of the business as well as making high-quality cool-climate wine.

Purple Hen's wines reflect its unique location and Dominic's hands-on approach.

"Our goal is to let the fruit shine," he says.

The vineyard's volcanic basalt soils, consistent rainfall, and maritime climate create ideal conditions for cool-climate varieties like Pinot Noir and Chardonnay. Rhyl's fertile soils and mild temperatures, moderated by the ocean, offer further advantages for grape growing, while natural windbreaks help protect the vines from the harshest winds.

Pinot Noir is the standout, earning acclaim locally and nationally for its balance and elegance. Shiraz, less common in Gippsland, has also been a surprising success.

Other varieties include Sauvignon Blanc, Riesling, Pinot Gris, Viognier, and Cabernet Sauvignon, ensuring there's something for everyone at the Cellar Door. The winery's accolades speak for themselves, with over 150 medals and 30 trophies from Australian wine shows.



Purple Hen's commitment to sustainability is evident in its practices in the vineyard. Neighbouring sheep graze the vineyard in the off-season, reducing the need for herbicides and helping manage grass growth naturally.

### Collaboration, sustainability

Rick was recently honoured with the Eckersley Award for outstanding contribution to the Gippsland wine community and praised for his collaborative spirit and ongoing commitment to raising the quality of Gippsland wines through learning, innovation, and sharing best practices.

Purple Hen's commitment to sustainability is evident in its practices in the vineyard. Neighbouring sheep graze the vineyard in the off-season, reducing the need for herbicides and helping manage grass growth naturally.

Local partnerships are also at the heart of their sustainability efforts with a focus on supplying locally first.

Experience Purple Hen Wines for yourself at 96 McFees Road, Rhyl.

Enjoy a tasting paddle with breathtaking views or pick up a bottle at the local IGA to pair with some local produce.

Purple Hen offers a true taste of Phillip Island.

/ Sponsored article /

## Celebration for TOWN graduates

### HEALTH

Phillip Island TOWN (Take off Weight Naturally) group celebrated a special milestone for members Fay Wilson and Lee Forster this month.

Leader Vincent Vale presented certificates to Fay and Lee after they both reached their doctor's recommended goal weight.

Phillip Island TOWN meet at the Rhyl Mechanics Hall, Rhyl on Thursday mornings from 9am to 11am.

If you are overweight and would like support and encouragement while you achieve your weight loss goals, then TOWN could be for you. TOWN is low cost and affordable for all.

To find out more, contact Leader Vincent Vale 0414 709 066 or Secretary Lillian Heflingers on 0438 595 688.



Leader Vincent Vale presented Graduation Certificates to Fay Wilson and Lee Forster after they both reached their doctor's recommended goal weight.



Recipients of last year's Bendigo Community Grant program included local historical societies, football clubs, fire brigade and boardriders club, as well as a variety of local events.

## Bendigo Community Bank grants

### COMMUNITY

San Remo, Cowes and Grantville Community Bank Grant Program is now open, until June 30.

Not-for-profit organisations with a valid ABN (that is not a Government ABN), based in or servicing the San Remo, Cowes and Grantville communities, may be eligible to apply for a grant for their project. At the presentation of last year's grants, Bendigo Community Bank chair Peter Paul reported since it opened just

over 20 years ago, the bank had donated \$5.5 million into the community.

Recipients last year included local historical societies, football clubs, fire brigade and boardriders club, as well as a variety of local events.

Details and application forms for this year's grants at: [cia.communityenterprisefoundation.com.au/Program/Index/1?programId=5123](http://cia.communityenterprisefoundation.com.au/Program/Index/1?programId=5123)

Alternatively call the Community Enterprise Foundation on 1300 304 541 for further assistance.



When you know local,  
you'll love local  
[shopeatlovelocal.com.au](http://shopeatlovelocal.com.au)







Pepper (a moodle) is living his best life with owner Julie, after being rescued from Canine Lifeline. Pepper is six years old and loves yoghurt.



Teddi is a true Aussie dog ... he loves vegemite on toast and long afternoon naps in his beanbag after a walk.



phillipislandbasscoastdogownersassociation  
 pibcdoa pibcdoa

Our Association was formed to ensure dog owners are able to exercise their dogs on selective, suitable leash free beaches and leash free parks on Phillip Island and the Bass Coast Region and to promote the recognition that dogs are an important part of family life and contribute greatly to our physical and mental health and wellbeing.

If you are interested in joining our Association or would like more information please contact us via email or our social pages.

email – phillipislanddogs@gmail.com



I hear ya! Sprocket is a Siberian Husky Shephard-cross, who just loves getting into mischief. She also loves to go for a swim near the Cowes boat ramp. "Who could get angry with that face," asks owner Brett.



This snugly little fellow is Remy, a lovable mini-dachshund. "All he wants is cuddles ... and sleepy time," says owner Simon.



This high-jumpin' fellow is "Four O'clock", an Australian cattle dog who loves to play with a hose. His unique name came courtesy of owner John's then two-year-old son.



Hello, Tayla is my name. My hooman takes me to the beach and to Blue Gum Reserve, where I get time to run around with my doggy friends. I love being adventurous.



This beautiful Bessie Boy turned 13 last month and attributes his youthful looks to eating a carrot every morning. Owner Kaye said sometimes Bessie Boy likes to bury his carrot for later, and one day spotted a rabbit grabbing his morning treat. A game of chase ensued and now the rabbit comes by every day. "The rabbit's not too worried, as he gets away easily," said Kaye.



Meet Vespa. He's a sociable boy, who loves playing with his good mates Buster, Ash, Nellie and Billie.



We might be heading for winter, but say hello to Summer. Owner Margaret adopted the three-and-a-half-year-old Heltie last Christmas. Summer loves chasing rabbits, and going out on the boat and while she's still a little nervous around people, she loves other dogs. Margaret is longing for the day the island has a fenced dog park, so Summer can play with her friends in a safe environment.



This regal pair are Ruby and Bertie, two gorgeous corgis. Their proud owner Lynda tells us Ruby is excellent at herding chooks, while Bertie loves his belly rubs. "They are the best of friends, although Ruby, his big sister, is the boss."

# Gippsland Veterinary Group says g'day to Grantville

It's been six months since Gippsland Veterinary Group (GVG) opened the doors of its newest companion animal clinic in the vibrant coastal town of Grantville – and what a warm welcome it's received.

The local community has embraced the clinic with open arms, and GVG is proud to be part of this thriving region.

This exciting addition brings high-quality veterinary care right to the heart of the Bass Coast, making it easier than ever for both residents and holidaymakers to access trusted services.

Open Monday to Friday from 8.30am to 5.30pm, the Grantville clinic offers routine consultations, preventative care, and general treatments – providing much-needed convenience for pet owners who previously travelled to Newhaven or Wonthaggi.

Whether you're a long-time local or just visiting this stunning region, GVG's dedicated team is ready to support your pet's health with warmth, professionalism, and a deep commitment to animal welfare.

Grantville is now the eighth location in the GVG network, joining established companion animal clinics in Leongatha,



Gippsland Veterinary Group (GVG) opened the doors of its newest companion animal clinic in the vibrant coastal town of Grantville six months ago, providing compassionate, comprehensive care.

Inverloch, Foster, Wonthaggi, Newhaven, and Mirboo North, along with a renowned Large Animal and Equine Centre in Leongatha. This expansion reflects GVG's ongoing commitment to the Gippsland and Bass Coast communities.

More than a veterinary provider, GVG is known for its compassionate, comprehensive care and strong community ties. The team is also widely respected for their work with injured wildlife, volunteering their expertise to rehabilitate native species such as koalas, albatrosses, and other local fauna. This dedication highlights GVG's core values: integrity, compassion, and community support.

With the addition of the Grantville clinic, GVG continues its mission to deliver the highest standard of care to all animals, from beloved pets to vulnerable wildlife, while making a meaningful difference in the lives of those who care for them.



**GIPPSLAND VETERINARY GROUP**

now open in  
**GRANTVILLE!**

**2/1524 Bass Hwy, Grantville**  
**Monday to Friday**  
**8:30am - 5:30pm**

**To make an appointment call**  
**5672 1060**

**www.gippsvet.com.au**







*This Mother's Day,  
find the perfect gift that lasts.  
Our shelves are filled  
with books that spark joy,  
laughter, and connection.*

**TURN THE PAGE**  
BOOKSHOP PHILLIP ISLAND  
Phone: 59 52 1444 | [www.turnthepagebookshop.com.au](http://www.turnthepagebookshop.com.au)

**Flowers**  
OF PHILLIP ISLAND

**HOMEWARES  
GIFTWARES  
FRESH BLOOMS**

**OPEN FOR  
DELIVERIES ON  
MOTHER'S DAY**

Open 9 - 5 Monday - Sunday  
1/96 Thompson Ave. Cowes | 03 5952 2235 | [www.flowersofphillipisland.com.au](http://www.flowersofphillipisland.com.au)

**Happy  
Mother's  
Day!**

*Have a fabulous day.  
We all love you.  
The Advertiser team.*

**The Westernport Hotel, San Remo**

**Mother's Day Lunch**

**Sunday 11 May 2025  
12pm - 3pm  
\$70 per person  
Menu designed for sharing  
Bookings essential - Phone 03 5678 5205 or email  
[morgan@thewesternport.com.au](mailto:morgan@thewesternport.com.au) to book  
Glass of Sparkling for Mum on arrival**

**Mother's Day Menu**

*Select one dish from each course to share between two people*

**Starters**

Rosemary Focaccia / Balsamic / EVOO  
Hiramasa Kingfish Crudo / Nam Jim / Coconut / Coriander  
½ Dozen Pacific Oysters / Champagne Mignonette (GF/NF/DF)  
Charcuterie Platter / Chefs Selection of Cured Meats / Vintage Cheddar /  
House Pickles and Preserves / Peasant Loaf

**Mains**

Twice Cooked Pork Belly / Red Wine Jus  
48hrs Slow Cooked Lamb Shoulder  
Whole Baby Barramundi/Caper Butter Sauce  
Butchers Cut / Rump Cap

**Sides**

*Select two sides to share between two people*

Roasted Heirloom Carrots / EVOO / Honey / Balsamic (V,G/F,N/F,)  
Grain Salad / Almonds / Feta / Green Goddess (V, G/F)  
Sweet Potato / Maple / Goats Curd / Soft Herbs (V/GF/DF)  
Seasonal Greens / Tiny Toms / Soft herbs / EVOO (VE/GF/NF/DF)  
House Salad / Farm leaves / Beets / Radishes / Citrus Vinaigrette  
(VE/GF/DF/NF)  
Chat Potatoes / Rosemary / Garlic / EVOO (V/NF/DF)

**Dessert**

Coverture Chocolate Fondant / Chocolate Ganache / Seasonal berries  
Sticky Date Pudding / Butterscotch Sauce / Double cream  
Cheese Board a selection of local & regional cheeses, quince paste, dried fruit,  
crackers



# KEEP IT LOCAL

## DIRECTORY

### ACCOMODATION



#### RANFURLIE BED & BREAKFAST

A cosy retreat that sleeps up to six people.  
From \$75 per person per night  
including a delicious continental breakfast.  
Call 0434 174 251 for more info.

### HOME



Eco Friendly Wash & Dry  
Self-Service  
NEW: Linen Service Available!  
pilaundromat@outlook.com  
4/14 The Esplanade, Cowes,  
2nd Floor, above M&O Café

#### SOUTH COAST FLOORING XTRA

155 Thompson Avenue, Cowes 03 5952 1488



Ray White Phillip Island, 56-58 Thompson Avenue, Cowes 5952 2799

#### FURNITURE OUTLET YOUR FURNITURE SHOP

- Beds • Mattresses
- Sofas • Lounges
- Dining • Tables • Chairs
- Office • TV • Outdoor

PHONE RON 0419 335 985  
sales@furnitureoutletphillipisland.com.au  
153 Thompson Ave., Cowes (near Ampol Servo)  
www.furnitureoutletphillipisland.com.au

#### Melaleuca Lodge Secondhand Book Sale

Open 10-12 every Saturday

#### BILLS BOOK SHED

1 Watchorn Road, COWES  
(off Settlement Road)

0437 949 029

#### SUBSCRIBE ONLINE

www.pisra.com.au

PHILLIP ISLAND & SAN REMO  
ADVERTISER



YOUR LOCAL COMMUNITY STATION  
- GREAT MUSIC AND EVERYTHING LOCAL  
across Phillip Island and Western Port on  
**89.1FM**

### LEISURE



OPEN 7 DAYS from 10am  
1805 Phillip Island Rd, Cowes  
Ph: 03 5952 2283  
amazenthings.com.au  
FUN | MAGIC | ADVENTURE

#### GUIDED KOALA TOUR

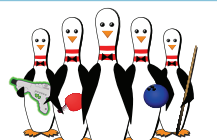
Get up close at the  
Koala Conservation Reserve!

Phillip Island  
NATURE PARKS

BOOK NOW  
at penguins.org.au



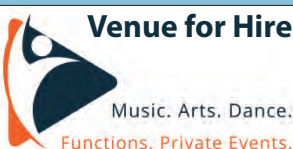
91-97 Settlement Rd, Cowes  
5952 3977



#### The Centre

Cowes

Call 1800 247 669  
thecentrecowes@hotmail.com



Music. Arts. Dance.  
Functions. Private Events.



Uber

pick up and go

Uber X, Uber XL, and Uber Maxi, up to 12 seater buses

TIM BROWN Phillip Island 0412 572 373

### AUTOMOTIVE



Service Centre

Phillip Island Tyre Service

101 Settlement Rd, Cowes 5952 1480



3 HARVEY DRIVE, COWES

03 59 523 305

PHILLIPISLANDTYRESC.COM.AU  
HELLO@PHILLIPISLANDTYRESC.COM.AU

### BEAUTY



#### Mobile Hairdresser

Over 20 years experience  
Claire Sunderland 0408 566 620

### BARBER

72 CHAPEL STREET COWES.  
0482 936 843  
WALK INS ONLY



### FINANCE

Your local bank for locals



San Remo (03) 5678 5833  
Cowes (03) 5952 3383  
Grantville (03) 5678 8773

#### LJ Hooker Home Loans

Gippsland

For all your refinancing or home loan  
needs in Gippsland and surrounds.  
Gabriel Caffieri - Franchise Owner | Lending Specialist  
gcaffieri@ljhookerhomeloans.com.au | 0421 338 914



Home Loans

- Home Loans
- Personal Loans
- Self Employed
- Commercial Lending
- Private Lending
- SMSF

\*Yellow Brick Road Finance Pty Ltd ACN 128 708 105. Australian Credit Licence 393395

8 Vista Place  
Cape Woolamai 3925  
phillip.island@ybr.com.au

Joe Reilly  
M 0402 005 933  
T 03 5956 6892

### FOOD & DRINK



Online ordering now available  
kristoscowes.com.au | 03 5952 3355  
Shop 5 /15-16, The Esplanade, Cowes

#### "THE BEST HAMBURGERS ON THE ISLAND"

ONE WITH THE LOT ... HEAVEN! CHIPS TOO!

ORDERS 5907 6796

RHYLL GENERAL STORE AND BOTTLE SHOP



### COMPUTER SERVICES



San Remo | 5952 5379  
info@printitfast.com.au  
www.printitfast.com.au

Shop Local  
Support Local  
PRINT LOCAL

#### IT repairs

KEEP CALM & LET ME FIX IT

Phone, PC &  
Electronic Repairs

0490 424 415

www.itrepairs.net.au

admin@itrepairs.net.au

### MEDICAL

#### NEWHAVEN MEDICAL CLINIC

Shop 5 8-10 Forrest Ave, Newhaven

Opening hours:

8.30am-5pm Monday-Friday

**Call 5926 6910**  
to make an appointment!

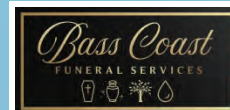


#### YOUR PREMIUM LOCAL DENTIST

(03) 9120 2122



Locally owned and operated by  
Scott & Sharon Anderson 5672 1074



0448 602 005

www.basscoastfunerals.com.au

### REAL ESTATE



San Remo | Cowes | Wonthaggi  
03 5678 5885 | 03 5952 5100 | 03 5672 5558



Your  
local  
experts



Specialising in real estate sales, commercial sales &  
leasing, business sales, residential asset management,  
holiday accommodation, owners corporation and storage.

obrejudithwright.com



Selling more properties  
on Phillip Island than  
any other agency  
5952 2799  
raywhitephillipisland.com.au



PHILLIP ISLAND | SAN REMO

We see more than property.

03 8583 4701

stockdaleleggo.com.au/phillipisland



Est. 1886  
113a Thompson Avenue, Cowes  
5952 2633 ALEXSCOTT.COM.AU



Property Consultants

Shop 3/129 Marine Parade SAN REMO  
5678 5878 www.glpc.com.au

**WE KNOW REAL ESTATE**



# The 2025-26 Community Support program opens

FUNDING

Westernport Water is inviting applications for its 2025-26 Community Support Program, offering sponsorship funding and in-kind support for local events, initiatives and projects that align with the themes of healthy people, healthy communities, and a healthy planet.

With \$35,000 available in funding, the program supports not-for-profit organisations, community groups, sporting clubs, schools, kinders and committees of management across Westernport Water’s service area.

“The Community Support Program is part of Westernport Water’s ongoing commitment to supporting a thriving, resilient and connected community,” said Dona Tantirimudalige, Managing Director of Westernport Water.

“Now in its sixth year, we’re proud that the program continues to support local organisations working to improve the wellbeing of people and the environment.”

“If your group is running a project, program or event with a sustainability focus, whether it’s promot-



Applications are now open for Westernport Water’s 2025-26 Community Support Program. Last year, Newhaven Primary School received funding for a new water refill station hydrobank. Sharyne Munday (Principal), Ben McKenna (School Council President) with School Captains Olivia and Sam.

ing tap water, conserving water or reducing single-use plastic bottles, I encourage you to apply.”

Applications are now open and close Wednesday June 16, with successful applicants to be notified by July 18. A cheque presentation event is scheduled for July 30.

Projects must be based within Westernport Water’s service area and be run by registered not-for-profit organisations. Events must be free from single-use plastic water bottles.

There are five sponsor-

ship packages available:

- Water refill stations (up to \$7000)
- Small water efficiency projects (up to \$5000)
- Schools (up to \$3000 for water-focused education or projects)
- Sports hydration (up to \$500 for hydration kits or water coolers)
- Event package (\$500 cash plus hydration support and promotional materials).

[www.westernportwater.com.au/our-community-support-program/](http://www.westernportwater.com.au/our-community-support-program/) / Sponsored article /



## SHORT STACK

A QUICK ROUNDUP OF NEWS, VIEWS AND OPPORTUNITIES

Education Excellence awards

Nominations are open for the Victorian Education Excellence Awards.

The awards recognise individuals and school teams that have made a significant contribution to education across the state.

The awards also support the continued professional development of staff, with professional learning grants of \$20,000 available for each individual award winner, and \$25,000 for each team award.

The winner of the Lindsay Thompson Award for Excellence receives a further professional learning grant of \$20,000.

Nominations are made at a school level and are open until Monday May 31, with winners announced on October 24.

[vic.gov.au/VEEA](http://vic.gov.au/VEEA).

Senior of the Year

Nominations are open for the 2025 Victorian Senior of the Year Awards.

The awards highlight the important role older Victorians play in strengthening our state – from supporting local communities to leading organisations that drive statewide change.

There are six categories of awards in 2025, including:

- The Premier’s Award for Victorian Senior of the Year for outstanding and lasting contribution to their community and Victoria
- The Council on the Ageing (COTA) Victoria Senior Achiever Award for significant contribution to local communities
- The Emerging Impact Award recognising new volunteers that are already making an impact in their community
- The Positive Ageing Award for promoting wellbeing and active ageing
- The Promotion of Multiculturalism Award for advancing cultural diversity
- The Veteran Community Award for service to the veteran community.

The awards will be presented in October, at a ceremony as part of the annual Victorian Seniors Festival.

Nominations close Sunday June 1 and nominees must be aged 60 years or older, or 50 years or older for Aboriginal and Torres Strait Islander Victorians.

[seniorsonline.vic.gov.au/awards](http://seniorsonline.vic.gov.au/awards).

Support for early childhood workers

Applications are open for the Certificate III Upskill Support Program, which will provide 400 places for educators looking to upskill to a Diploma of Early Childhood Education and Care.

This includes \$7000 in financial support, that can be used for living expenses while studying and working. This year, half of the places are reserved for students in rural and regional Victoria.

Scholarships of \$25,000 for bachelor’s students and \$12,000 for graduate diploma stu-

dents are available through the Early Childhood Scholarships Program at Deakin University.

Applications close on June 13: [vic.gov.au/financial-support-study-and-work-early-childhood#certificate-iii-upskill-support-program](http://vic.gov.au/financial-support-study-and-work-early-childhood#certificate-iii-upskill-support-program).

Deakin is currently taking applications for its employment-based pathways: [vic.gov.au/financial-support-study-and-work-early-childhood](http://vic.gov.au/financial-support-study-and-work-early-childhood).

School Saving bonus

The government is encouraging families to use their \$400 School Saving Bonus to purchase winter school uniforms.

While most families have drawn on their School Saving Bonus in part or in full, around 30 per cent of bonuses remain untouched – ready to be used by families ahead of winter.

The next two months are the last chance to use the \$400 School Saving Bonus to purchase uniforms or textbooks, either through approved suppliers or at second-hand uniform and textbook shops run by schools.

Any money unspent by June 30 will automatically transfer to a family’s school account, with parents able to use these remaining funds on school activities like camps, sports or excursions.

For more information about the School Saving Bonus, visit [vic.gov.au/school-saving-bonus](http://vic.gov.au/school-saving-bonus)

National Palliative Care Awards

Nominations are now open for the 2025 National Palliative Care Awards, recognising excellence, innovation and leadership in Australia’s palliative care sector.

There are eight award categories for 2025 including for emerging leaders and researchers, volunteers and outstanding achievement by a team and by an individual.

Nominations are free and close Thursday June 19. Winners will be announced on Thursday September 11.

To learn more or to nominate, visit [palliativecare.org.au/campaign/national-palliative-care-awards-2025/](http://palliativecare.org.au/campaign/national-palliative-care-awards-2025/)

Volunteer awards

Nominations are now open for the Victorian Volunteer Awards 2025 – recognising the individuals and organisations who go above and beyond to support their communities.

Run in partnership with Volunteering Victoria, the Awards honour outstanding volunteers and organisations across eight categories.

Individual categories include the Young Volunteer Award, Volunteer Commitment Award, Volunteer Leadership Award and Volunteer Impact Award. One of the individual winners will also receive the Dame Elisabeth Murdoch Award for Volunteer of the Year, including a \$10,000 donation to a not-for-profit of their choice. Nominations close July 4.

For more information and to nominate a Victorian making a difference, visit [volunteerinvictoria.org.au/awards](http://volunteerinvictoria.org.au/awards).



## SPECIAL DELIVERY

### Hi Kai

Kai Tanaka-Burnham was born at Wonthaggi Hospital on April 5, 2025, weighing 3.34kg.

Kai is the first child for Mark Burnham and Megumi Tanaka of Corinella.



## Community Support Program 2025-26 Sponsorship applications open now!



### Apply between 7 May - 11 June 2025

**\$35,000 is available for eligible local schools, kinders, community groups, sporting clubs and not-for-profit organisations from within our service area.**

**Five sponsorship packages to choose from:**

1. Water refill stations (fountains) - up to \$7,000
2. Small water efficiency projects - up to \$5,000
3. School / Kinder package - up to \$3,000
4. Sports hydration package - up to \$500
5. Event package - \$500, hydration station, bottles, billboard sign

Each package aims to promote drinking tap water; water conservation; sustainable environmental outcomes; or build important community partnerships.

**Need inspiration for your application?**

Scan the QR code, or go to our website to view previous projects and events we have sponsored, as well as the Terms & Conditions and Eligibility Criteria for applicants.





## • FINANCIAL LITERACY MADE SIMPLE

# RBA's Rate Cut

## - Implications and Reactions

By David Caporale,  
Chief Investment Officer of RELIcapital

In a move anticipated by many, the Reserve Bank of Australia (RBA) has reduced the cash rate by 25 basis points, bringing it down to 4.10%. This decision marks the first rate cut in over four years and signals a pivotal shift in Australia's monetary policy. The implications of this adjustment are multifaceted, affecting borrowers, savers, and the broader economy.

### Impact on Mortgages and Loans

For homeowners and prospective buyers, the rate cut offers a glimmer of relief. The big four banks have announced corresponding reductions in their home loan variable interest rates by 0.25% per annum, effective from February 28, 2025. This reduction translates to tangible, albeit small, savings for borrowers. For instance, on a \$600,000 mortgage, monthly repayments could decrease by approximately \$92.

However, the benefits extend beyond the offerings of the major banks. Research indicates that Australian homeowners could save nearly \$40,000 over a 30-year mortgage on a 5.59% variable interest rate which is currently being offered by some non-bank lenders. This competitive environment empowers borrowers to shop around for more favourable terms, potentially easing the financial burden amid rising living costs.

### Returns on Savings

While borrowers may rejoice, savers face a different reality. Interest rate cuts typically lead to reduced returns on savings accounts and term deposits. Financial institutions may adjust their deposit rates in response to the RBA's decision, meaning individuals relying on interest income might see diminished returns.

### Economic Outlook and Future Rate Cuts

The RBA's decision is rooted in its assessment of the current economic climate. Deputy Governor Andrew Hauser emphasised the need for additional positive news on inflation before considering further interest rate cuts. While policymakers are optimistic about receiving favourable inflation reports, they require concrete evidence of this improvement

before easing monetary policy further.

Economists, including Dr. Shane Oliver, Head of Investment Strategy and Chief Economist at AMP, have weighed in on the potential trajectory of interest rates. Dr. Oliver suggests that the RBA may continue its easing cycle, with the cash rate potentially falling to 3.6% by the end of the year. This projection is contingent upon various economic indicators, including inflation trends, employment figures, and global economic conditions.

It's important to note that while rate cuts can stimulate economic activity by encouraging borrowing and spending, they are not without risks. Prolonged low-interest environments can lead to asset bubbles and may not address structural issues within the economy. Therefore, the RBA is likely to approach future cuts with caution, ensuring that each move aligns with the broader goal of sustainable economic growth.

### Broader Economic Implications

Beyond the immediate effects on loans and savings, the rate cut reflects the RBA's commitment to steering the economy towards its inflation target of 2-3%. The decision comes in the context of easing inflationary pressures, with underlying inflation recorded at 3.2% in the December quarter, indicating a faster-than-expected decline.

This monetary policy adjustment aims to support economic growth, particularly in sectors sensitive to interest rates, such as housing and consumer spending. However, the effectiveness of this strategy will depend on various factors, including consumer confidence, global economic trends, and fiscal policy measures.

### Conclusion

The RBA's recent cash rate cut signifies a strategic response to current economic indicators, aiming to balance the needs of borrowers and savers while steering the economy towards sustainable growth. As the year progresses, all eyes will be on the RBA's subsequent moves and the unfolding economic landscape, with stakeholders across the spectrum adjusting their strategies in response to these developments.

\*[www.amp.com.au](http://www.amp.com.au)

*The information above does not constitute financial or other professional advice and is general in nature. It does not take into account your specific circumstances and should not be acted on without a full understanding of your current situation and future goals and objectives by a fully qualified financial advisor. Before you make any decision about whether to acquire a certain financial product, you should obtain and read the relevant product disclosure statement.*

**RELIcapital**

Scan For More



Over 45 Years of  
Investments in Real Estate Loans

Variable interest rates starting from:

**6.75** % p.a.\*

Fixed term investment with  
no entry, exit or ongoing fees.

03 5662 2529 [relicapital.com.au](http://relicapital.com.au)

\*Rate current 1 March 2025. There is a risk that investors may achieve lower than expected returns. RELI Capital investments are not bank deposits, and investors risk losing some or all of their money. Generally there is no right of early withdrawal prior to maturity of the investment term and there is a risk that redemption at maturity may be delayed. Before deciding to invest consider RELI Capital's Product Disclosure Statement and Target Market Determination by visiting [relicapital.com.au](http://relicapital.com.au) or our office.



Team winners at the Rotary Golf Day: Phil Cooksley, Gerard Ferrari, Shaun Brooks (BCH) and Ron Wadley.



Rotary's Phil Dressing with ball drop winner Ineca Prowd of Traralgon. Her ball (number 60) was closest to the PIN and she won \$200.

# A big hit for Rotary

## FUNDRAISER

The Rotary Club of Phillip Island and San Remo hosted a successful and vibrant golf day last Friday, bringing together local golfers, businesses, and community members for a day filled with good-natured competition and generous community spirit.

The event, a dropout Ambrose format, held at the Phillip Island Golf Club, not only encouraged all levels of golfers but also raised much-needed funds for the Rehabilitation Courtyard at the new Cowes Community Hospital.

A highlight of this beautiful autumn day was the much-anticipated Cherry Picker Ball Drop.

In this unique and thrilling event, hundreds of numbered golf balls were lifted high above the putting green in a cherry picker and then released. The excitement built as one lucky ball landed closest to the target, claiming the \$200 cash prize.

This spectacle drew cheers from on-lookers and provided a light-hearted finale to a fabulous day.

The winning team was Phil Cooksey, Gerrard Ferrari, Ron Wadey and Lawrence Ferrari, who were presented with their prize by Shaun Brooks, from Bass Coast Health.

Gea Lovell, Rotary Club President expressed sincere thanks to all who made the event possible, especially the sponsors; Phillip Island Winery, Cowes RSL and particularly the exceptional generosity of the Phillip Island Golf Course.

"This event is a reminder of how powerful community support can be," said Gea.

"Together, we raised funds that will help change lives."

With planning already underway for next year's event, the Rotary Golf Day is shaping up to become a much-anticipated annual event.

Keep an eye out for updates – and maybe start practising your swing.

# Public transport survey soon

## TRANSPORT

Member for Bass Jordan Crugnale confirmed community consultation will start this year on public transport needs in the Bass electorate.

The consultation is planned to start in June, and Ms Crugnale said this would be an opportunity to let the government know "what your public transport needs are, how you travel and where you want your service/s to go".

She refuted claims that the VLine Service from Koo Wee Rup to Southern Cross would cease in June 2025 and change to a service replacement direct to Pakenham East Station.

Ms Crugnale said she has been advocating for a proper review and audit of both VLine services.

"We all know as travelers that the timetable and frequency no longer suit how we move around in modern times.

"We also know that in many instances the local connector buses don't match up to both the VLine or the metro trains."

The consultation will provide commuters traveling to and from Phillip Island, with a chance to have input into improving the services.

"With the VLine current timetables, what I have heard many times over is that regional students can't



Member for Bass Jordan Crugnale confirmed community consultation will start this year on public transport needs in the Bass electorate.

get to and from their tertiary institutions in a timely manner, families have to drive to attend a footy match in the city, and the added cost or hindrance altogether for people wanting to go to concert or major event on any given night because they need to factor in an overnight stay," Ms Crugnale said.

"Public transport is vital to our Bass and wider Gippsland communities – it supports our access to health appointments, support services, cultural and recreational activities, transports workers and students, brings visitors to our region and takes us to all the resources in the city."

Ms Crugnale said the bus services and connections across the South East

and into Bass Coast/South Gippsland were "not great".

"Current service timetabling does fail to provide good connection between routes and enough frequency, significantly impacting smaller towns and communities accessing larger centres.

"Our VLine buses from Cowes/Inverloch in both directions are also a popular choice of transport, are regularly full leaving passengers far from home having to wait or catch taxi's and in many instances, the interconnecting local buses fail to align."

A petition on change.org calling for the express service from Koo Wee Rup to Southern Cross station to be retained has attracted over 2000 signatures, and Ms Crugnale said she encouraged people to participate.

"I welcome this wholeheartedly. It's important and sends a strong message to government.

"I sincerely hope you will all continue being active and strong advocates adding your voice also to the upcoming community consultation in June.

"As your local representative I will absolutely continue to make vociferous representations to the Minister and Department of Transport and Planning (DTP) on your behalf to strengthen and better our bus services networks."





# BUSINESS GUIDE

LOCAL TRADES AND SERVICES

AIR CONDITIONING

**ALWAYS COOL**  
AIR CONDITIONING  
HEATING & COOLING SPECIALISTS  
1800 931 631  
www.alwayscoolair.com.au

Pic lic 45137  
Au 34551

BLINDS/AWNINGS

*Creative Blinds & Awnings*  
  
FREE MEASURE & QUOTE  
Mobile Showroom  
Peter: T/F: 5952 5092 M: 0417 358 650

LK00277AA

CONCRETER

**NEW WAVE CONCRETING**  
0402 454 742  
**Luke Hinrichs**  
Phillip Island & surrounding areas since 1999

LK00344AA

EARTHMOVING

**MK EARTHWORKS**  
BULK CARTAGE \* SITE CLEAR \* TRENCHES \* DRILLING  

- Excavations
- Demolitions
- Drive/Pathways
- Retaining walls
- Spoil removal

- Free quote / consultation
- Experienced local business
- Innovative solutions
- Quality workmanship
- Transparent communication
- Full compliance / insurance
- Tight access specialists

  
\* TIPPERS \* EXCAVATORS \* SKIDSTEER \* AUGERS \* ROLLER \*  
em: mkearthworks@gmail.com  
ph: Mick - 0408 575 472

JD02676AA

AIR CONDITIONING

**BONUS**  
GIFT CARD CAMPAIGN  
**CITY TO COAST AIR**  
WONTHAGGI

**SUPPLY, INSTALLATION, REPAIRS & MAINTENANCE**  
Shop 1/13 Inverloch Rd, Wonthaggi  
**0400 001 465**  
citytocoastair.com

AUS9231 Terms & conditions apply. JD09314AA

BLINDS/AWNINGS

**0418-965-140**  
CALL NATH  
**SEPRIT SHADE SOLUTIONS**  
Outdoor Blinds  
Internal Blinds  
Curtains & Sheers  
Aluminium Shutters  
Plantation Shutters

JD09314AA

CONCRETER

**TIM NEWMAN**  
**CONCRETING**  
• Exposed aggregate • House slabs  
• Driveways • Footpaths • Sheds & garages  
• All concreting needs  
Tel/Fax 5956 8791  
RMB 2180 Ventnor 3922 E:tnewman@waterfront.net.au  
**0419 312 805**

LK00045AA

EARTHMOVING

**Bobcat/Excavator Tipper Hire**  
All aspects of earthmoving, driveways, draining and landscaping  
**Rubbish removal**  
**0418 372 399**  
Servicing all Phillip Island areas  
**Ray's Skip Hire + Earth works**  


LK00032AA

AIR CONDITIONING

**COASTAL**  
REFRIGERATION & AIR-CONDITIONING  
03 5678 5190  
office@picra.com.au  
Coastal Refrigeration and Airconditioning  
coastal\_refrig\_and\_aircon  
AUS1426  
COMMERCIAL & DOMESTIC  
SERVICE, INSTALLATION, MAINTENANCE AND SALES

JD09314AA

CABINET MAKER

**JOINERY SMOOTH**  
RECYCLED TIMBER CABINERY  
KITCHEN'S  
INSTALLATION SERVICE  
TRADITIONAL SAUNA'S  
BESPOKE DESIGN  
0457 239 600  
MITCH.JOINERYSMOOTH@GMAIL.COM  
WWW.JOINERYSMOOTH.COM.AU  
JOINERYSMOOTH  
ACN 672 446 769

JD09314AA

DECK RESTORATION

**Enjoy your outdoor space for years to come with DeckSeal!**  
DECK SANDING, CLEANING, OILING AND MAINTENANCE.  
**DeckSeal**  
Call Nick on 0411 988 401  
basscoast@deckseal.com.au  
www.deckseal.com.au

JD09314AA

ELECTRICIAN

REC:29004**LOCAL ELECTRICIAN**  
**SAN REMO & PHILLIP ISLAND**  
  
**Ground Swell Electrical**  
TRUSTED FULLY LICENSED  
A-GRADE ELECTRICIAN  
NEW BUILDS AND RENOVATIONS  
SWITCHBOARD UPGRADES  
POWER AND LIGHTING SOLUTIONS  
AND MUCH MORE  
CONTACT JACK TODAY  
**0431 296 703**  
GROUNDWELLELECTRICAL@OUTLOOK.COM

JD09314AA

AIR CONDITIONING

**southcoast air**  
Air conditioning & refrigeration  
Cooling & heating specialists  
Split system sales & complete installation  
Service, repairs Electrical contractor  
**0402 044 377**  
Dave Miller  
PIC. 43216  
LI09866 REC26099

JD09314AA

CAR REMOVAL

**BASS COAST CAR REMOVALS**  
Unwanted cars removed free  
CHEAP TOWING NOW AVAILABLE  
**Call Shane**  
**5678 2002 or 0407 599 616**

JD09314AA

DECKS & VERANDAHS

**ISLAND DECKS**  
Specialists in all types of decks and verandahs  
  
John Johnston 0414 714 179  
REGISTERED Building Practitioner

LK09300AA

ELECTRICIAN

**JACKSON ELECTRICAL & AIR CONDITIONING**  

- Reliable & fully insured
- Split system installers
- Air conditioning sales and service
- TV Antenna & data

- All types of electrical services
- Free quotes
- Hot water systems
- Ovens and cooktops

  
**CALL MICHAEL 0427 633 667**  
CAPE WOOLAMAI REC 17893 LIC. 48834

JD02421AA

BLINDS & CARPET

**SOUTH COAST FLOORING XTRA**  
A FABULOUS FLOORING EXPERIENCE  
155 Thompson Avenue, Cowes 03 5952 1488

JD09314AA

CARPENTER

**CARPENTRY**  
Est 1982  
Home Renovations  
Maintenance & Repairs  
Window Replacement | Decks  
John 0447 975 626

JD03567AA

DRIVEWAY RESTORATION

**CLEAN, PRESSURE BLAST AND RESEAL**  
**DRIVEWAYS AND PATHS**  
MARK: 0418 105 262

JD04233AA

ELECTRICIAN

**JACKSON ELECTRICAL & AIR CONDITIONING**  

- Reliable & fully insured
- Split system installers
- Air conditioning sales and service
- TV Antenna & data

- All types of electrical services
- Free quotes
- Hot water systems
- Ovens and cooktops

  
**CALL MICHAEL 0427 633 667**  
CAPE WOOLAMAI REC 17893 LIC. 48834

JD02421AA

ADVERTISING

  
To advertise in the  
**Business Guide**  
CONTACT JANE ON  
5952 3201 OR EMAIL  
ADS@PISRA.COM.AU

LK00088AA

CONCRETER

**MBURGESS**  
CONCRETING & EXCAVATIONS  
Matt Burgess 0405 533 456

JD04480AA

CONCRETER

**RAY MATTOCK CONCRETING AND EXCAVATIONS**  

- Exposed aggregate paving
- Coloured - Slate - Brick paving
- House slabs - Garages

  
PH: 5952 3853 FAX: 5952 5103  
Mob: 0418 560 202

LK00088AA

EARTHMOVING

**DIG IT & DEMO**  
**EVERYTHING EARTHWORKS**  

- SITE CUTS • SITE CLEANS
- DEMOLITION • LANDSCAPING
- RETAINING WALLS

  
**0400 633 030**

LK00088AA

GARAGE DOORS

**GARAGE DOOR REPAIRS**  
**0439 203 426**  


JD02421AA

GAS SUPPLIERS

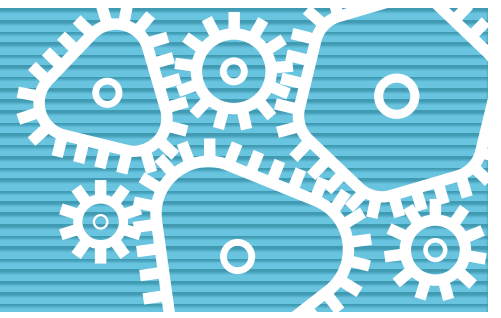
**WRIGHTON GAS SUPPLIES**  
Agency for **ELGAS**  
Servicing Phillip Island & San Remo  
For all household gas supplies  
**Bruce Wright**  
Tel: 5952 3252 Mobile 0409 164 441

LK00040AA



# BUSINESS GUIDE

LOCAL TRADES AND SERVICES



## GUTTER CLEANING

**GUTTER-VAC**  
Clean. Safe...Easy

Vacuum gutter cleaning,  
gutter guard, solar panel cleaning,  
ceiling cavities cleaning.

**0427 393 291**  
swgippsland@guttervac.com.au

## LAWN MOWING

**Dave Costello**  
For all your lawnmowing,  
landscaping &  
rubbish removal

Call for a free quote  
**0411 175 957**

## PAINTER

**Repair, Refresh, Renew**  
your home or business with  
**Red Ochre Painters**

"Fantastic job!!  
Love your work... looks amazing!  
- Peter, Cape Woolamai

**Contact us today  
on 0425 711 217**

**RED  
OCHRE  
PAINTERS**

PHILLIP ISLAND

## RESTUMPING

**KEANE & SON**  
House Restumping & Levelling

**Paul Keane**  
0427 080 309

keanesrestumping@outlook.com  
PO Box 696, Wonthaggi, Vic, 3995

## HANDYMAN

**SJC HOME MAINTENANCE**  
Qualified Tradesman with over 35 years experience

Call for a Free Quote  
No job too small  
Quality work at a great price, Fully insured

**Call Mick 0424 414 495**  
www.sjchomemaintenance.com.au

## LAWN MOWING

**Jim's Mowing**  
Need it Done?  
Jim's the One

Call **131 546**

- ✓ FREE QUOTES
- ✓ Fully insured
- ✓ Police checked
- ✓ OH&S compliant
- ✓ All work guaranteed

**RISK FREE**

Lawn mowing, gardening, pruning,  
hedging, rubbish removal, gutter cleaning,  
weeding, mulching, odd jobs  
www.jims-mowing.com.au

## RESTUMPING

**RESTUMPING & RELEVELLING**  
Restumping, Levelling,  
House Raising & Repacking,  
all renovation works

**CALL 0418 506 788**  
Licence DBL24625

## HYDRAULIC AND MECHANICAL

**ROTARET**  
HYDRAULIC ENGINEERING

Hydraulic, pneumatic and mechanical repairs.  
Design and fabrication.  
We also stock industrial supplies.

Factory 2, 3 Cyclone St, Wonthaggi  
(03)5672 5924  
Email: enquiries@rotaret.com.au

**We are More than Just Hose and Fittings**

## LAWN MOWING

**Phil's Mowing  
and Lawn care**  
0408 559 408  
Prompt - Honest - Reliable

Servicing Phillip Island and Surrounding Areas  
From San Remo to Cowes, Wonthaggi to Grantville

## PLASTERING

**Wp**  
**WONTHAGGIplaster**  
& Construction Supplies

T: 5672 1535 F: 5672 3786  
42 INVERLOCH ROAD, WONTHAGGI  
wonthaggiplaster.com.au

CEMENTEL GYPROCK CSR NATIONAL MASONRY EARTHWOOL

## ROOFING

**SOUTHERN  
METAL ROOFING**  
Metal Roofing Specialists

- Metal Wall Cladding • Domestic & Commercial
- New Installation & Renewals • Maintenance
- Fascia, Gutters & Downpipes • Aluminium Gutter Guard

30 Years Experience

M: 0431 044 485 E: chrissavona@yahoo.com.au  
Lic No 40950

## LANDSCAPING

**AB**  
Landscaping & Concreting

Retaining Walls  
Paving  
Small Brick Repairs  
Concreting  
Landscaping  
Small Jobs Welcome

**Phone Andrew  
0408 822 263**

## MOTORCYCLE REPAIR

**APEX**  
MOTORCYCLE REPAIRS  
PHILLIP ISLAND

**5919 0080**  
Unit 2, 7-9 Shorland Way, Cowes Vic 3922  
apexmotorcycles.com.au

**Phillip Island  
& Bass Coast  
Motorcycle Towing  
& Transport**

**Also Servicing Melbourne  
& Gippsland Regions**

- \*Breakdowns \*Flat Tyres \*Race Tracks
- \*Shows & Events \*Dealer Deliveries \*Auctions
- \*Local & Interstate \*Group Discounts
- \*Show Bike Specialists

**motorcycletow.com.au 0431 655 749**

## PLUMBING

**brenex**  
plumbing & gasfitting

24 hours  
7 days

- Roofing - Gas - Water - Hot Water - Pumps
- Water Tanks - Sewers & Storm water - Blockages

Brendan Duncan **0418 342 649**  
PIC No. 26296  
Email | brendan@brenexplumbing.com.au

## SOLAR

**islandenergy**

**SOLAR - BATTERIES - OFF GRID**

ACCREDITED SOLAR ELECTRICIAN APPROVED SOLAR RETAILER

**1300 534 110**  
REC 19496

## PLUMBING

**CHUNKS PLUMBING**

**All types of plumbing  
24 HOUR SERVICE** Lic # 48411

- Gas • Hot water units
- Sewers, storm water, blockages

A local, reliable business

**Daniel Campbell - 0438 520 546**  
daniel@chunksplumbing.com.au

## SLIDING DOOR REPAIRS

**SLIDING DOOR REPAIRS**

Are your doors sticking, catching  
or just not sliding properly?

- Timber & Aluminium Sliding Doors
- Bi Fold Doors
- Cavity Doors
- Wardrobe Doors
- Security Doors
- Track & Roller Replacements
- Screen Replacements
- New Locks Fitted

**And Much More**

Now Servicing Phillip Island

**ALL Sliding Door**  
REPAIRS MELBOURNE

Ph 0438 538 244  
info@asdrm.com.au  
www.allslidingdoorrepairsmelbourne.com.au

## LANDSCAPING AND DESIGN

**THE STONE STORE**

VICTORIA'S PREMIER DESTINATION  
FOR ALL THINGS NATURAL STONE  
AND PORCELAIN TILES.

OVER 500 HUNDRED PRODUCTS TO CHOOSE FROM!

**0424 426 932**  
FACTORY 14, 71 FRANKSTON GARDENS DRIVE, CARRUM DOWNS  
WWW.THESTONESTORE.COM.AU

## MARINE MECHANIC

**TOPWATER MARINE**  
0402 761 692

- Inboard / outboard motor servicing and repairs
- Accessory Installations and electrical work
- Trailer servicing and modifications
- Anchor winches • Boat detailing • Insurance work

www.topwatermarine.com.au | info@topwatermarine.com.au  
64 Dixon Street, Inverloch

## PLUMBING

**Same Day Plumbing Service**

**Morris Brothers**  
Lic 43482

Free Quotes - Pensioner Discounts  
**0403 116 435**

## PAINTER/DECORATOR

**SHANE FENECH**  
Painting & Decorating  
Quality Tradesman  
New homes. Renovations. Re-paints  
Free Quotes

**0419 523 299**

## PLUMBING

**RELIABLE PLUMBER**  
Fast Response at an honest price

**Tappy the Plumber**  
0427 776 808

- NO CALL OUT FEE
- Leaking taps & toilets
- Hot water systems replaced
- Vanities & water
- Filters installed
- Gas fitting
- General plumbing

email: tappy@waterfront.net.au  
Fully Licenced & insured. All work guaranteed Lic. No. 119269C

## ADVERTISING

**More  
Business Guide  
on next page.**









Congratulations to last week's winners (from left): Bill Sheriff (3), Jenny Smith (L) and Michael Dady (S).



Runners up: Colin Scales (2), Margaret Hoy (3), Claire Sheers (S) and Elaine Williams (L).

## Midweek at San Remo

### BOWLS

Fifty-eight players from the South West Gippsland Midweek Bowls Group last week headed to the San Remo Bowls Club for their regular match across all eight rinks in beautiful Autumn weather.

Players were met by Pauline and John whilst Peter, Claire, David and Rob prepared teams.

On the green, friendships were forgotten as the weekly challenge ensued, but this did not stop the good humour that prevailed amongst players.

The day's competition saw a few wrong bias shots – the RCH tin will take a while to refill but donations continue to flow.

A thank you from the group to Peter behind the bar, along with Aggie and Claire for their hard work in the kitchen, and to all

the volunteers who keep bowlers coming back week after week.

### Results

Congratulations to well-deserved winners on a score of 36: Bill Sheriff (3), Jenny Smith (L) and Michael Dady (S).

Runner's up on a score of 35: Colin Scales (2), Margaret Hoy (3), Claire Sheers (S) and Elaine Williams (L).

Best one game winners: Peter McWilliams (L), Marianne Scales (2), Tony Heppleston (S) and Raf Merante (3).

This week, the group will play at Loch and District Bowls Club.

Arrive on time to avoid missing out as numbers are close to full.

An apology from the group to Max Summers who was accidentally named as Max Williams in last week's report.

## Club hosts Robin Blackman Carnival

### BOWLS

The Phillip Island Bowling Club Robin Blackman Carnival was held across April 24 – May 4, with pairs, triples, fours and the prestigious Robin Blackman singles.

Bowlers from across Victoria were represented in all competitions. With the weather behaving itself, the standard of bowling was exceptional and the large crowd in attendance were not disappointed.

The final of the Robin Blackman singles was between Thor Shannon and Ray Jansen.

Congratulations to Ray Jansen on winning the 2025 Robin Blackman Singles title.

The Phillip Island Bowling club would like to thank major sponsors Bendigo Bank, OBrien Real Estate and Lifestyle Communities for their continued support.

Thank you to all volunteers who assisted across the carnival.

## News from the table

### BRIDGE

A Grand National Open Teams (GNOT) regional event was held at the Newhaven Club rooms on the last Sunday of the month.

Ten teams competed keenly at this Gold Point event.

Entrants were treated to barista coffees on arrival, accompanied by the ever-popular Boston

buns.

Congratulations to the Traralgon team of Helen McAdam, Don Tylee, Kevin and Marion Taylor who won all nine of their rounds and placed first.

The day concluded with wine, nibbles and a friendly gathering keen to share their highs and lows of the day.

Duplicate results (Monday, April

28 – six-and-a-half tables): 1st North/South Julie Perriam and Ann Gibson with 55.86 per cent and 2nd East/West Deb Anglim and Shirley Stewart with 57.86 per cent.

Nationwide Pairs (Wednesday, April 30 – three-and-a-half tables): 1st Moya Crowley and Karen Klym with 64.58 per cent.

For bridge enquiries (any level) contact Caroline on 0418 369 557.

## Island juniors work hard in Round 2 clashes

Continued from page 28

Starting hot throughout the first quarter, both teams played the ball hard.

The Bulldogs ran hard and got an early reward – starting in the middle of the ground and being worked down to the forward line where Max Svanosio slotted a great goal.

The second quarter started much like the first with the Bulldogs running hard for each other early and working the ball around with clean disposals.

Lachie Dallinger's goal-of-the-day highlighted the quarter, which included a spin out of a tackle, a running bounce and a goal from 25 metres out.

By half time, the Bulldogs' confidence was running high which led to some great team football.

Leongatha took their game to another level throughout this quarter which put the Island's backline under pressure.

The Parrot's took a reward for their efforts with a great team goal.

Finishing the quarter strong, the Bulldogs' Kensani Gardiner slotted two goals whilst on the run.

Heading into the final quarter ready to finish the match strong, the Island's Billy Kimber, Lachie Dallinger and Harper Dykes dominated centre clearances to keep the ball up the Island's end of the ground.

This quarter saw first game player Ruben Kimber play a major role in moving the ball into the Island's forward line.

Capping off the quarter, Judd Lock snagged three goals including a spin out of tackle, a fend off and snapping from 20 metres out.

Goals: K Gardiner, J Glasby, H Joyner, M Svanosio 1, L Dallinger 2 and J Lock 3.

Best players: L Dallinger, K Gardiner, H Joyner and R Kimber.

### U12 Blue

Round 2 saw the pups play Leongatha on home turf, captained by Max Robinson.

Max pumped up his team with his speech out on the ground.

Throughout the first quarter Jobe Lock kicked two goals to come out firing along with a goal from Lenny Cooper.

Jackson Rodakis and Ollie Hellmuth-Pask had great movement around the ball with great execution.

By quarter break, the Island led with 19 points to Leongatha's 7.

Zeb Findlay was up in the ruck during the second with the dynamic Kash Scheibel running hard.

Remi Monet and Dash Janson held their space and worked hard, along with Lenny Cooper and his fantastic marking in the back line.

Jackson Rodakis got his first goal for the season.

The third quarter saw the first goal to the opposition, with Leongatha increasing their lead with 33 points.

Rylan Lucas was the marking target and Cody Naismith had great body work.

Captain Max Robinson moved around finding space well.

The Blues were unlucky to only score one behind for the quarter.

During the fourth quarter the back line was fantastic with Otis Joyner, Phoenix Durdin and Zaine Liddle working hard.

Jackson Rodakis and Louis



Ry Sheers, Miller Sund, Archie Robinson and Kolby Carton from the U14 Blues.



The Island U14 Girls worked hard against Leongatha over the weekend. Despite not coming away with a win, the team were all smiles.

Brodie took turns in the ruck, and a goal was scored by young gun Noah Hollings who was solid in the packs.

Final scores: Phillip Island 32 def by Leongatha 45.

Best: Max Robinson, Lenny Cooper, Kash Scheibel, Jett Fawaz and Noah Hollings.

### U14 Blue

Following an inspiring speech from Captain Balin Riky, the U14 Island boys went onto the field strong.

A first goal from Flynn Riley, impressive pressure from Taj Piera, Jarrah Rutherford and Callum Chambers, and defensive interceptions from Miller Sund, Aiden Smith and Brax Scheibel saw Leongatha held scoreless in the first quarter.

Solid teamwork, tackles and swift forward movement from Kolby Carton, Ry Sheers, Ari de Fazio and Jax Marshall, along with a goal from Kai Denblyden in the second quarter kept the dogs in the lead at half time.

Goals from Archie Robinson and Flynn Riley in the second half cemented the win.

Awards: Miller Sund, Ry Sheers, Kolby Carton and Archie Robinson.

### U14 Girls

The Island U14 Girls worked a fantastic game with their confidence improving compared to the first match of the season.

Taking a goal in the first and the third, Alice Martindale kicked two goals, along with Sera Szymanski and Indi Chihotski both scoring a point in the fourth quarter.

Final scores: Phillip Island 14 def by Leongatha 47.

Awards: Hiedi Szymanski, Eliza Sannwald, Maya Gregory and Kailey Hamill.

### U16 Girls

The Phillip Island U16 Girls

were pumped this week after their strong win in Round 1.

They knew it was going to be a tough game as Warragul also kicked off their season strongly.

The Island once again fielded strong numbers and welcomed Brinkley Nicolaci and Lily "Elbow" Bow back to the team.

Warragul got away throughout the first quarter with a few early goals.

The Island girls seemed flat and their defence was tested numerous times.

Led by Tess Ricardo and well assisted by Mia Ward they repelled numerous attacks throughout the quarter.

Stepping up in the second quarter, the Island lifted their tackle rate and put pressure on Warragul at every opportunity.

Gemma Fischer and Lily O'Loughlin worked hard around the stoppages and Ruby Kent-Ford rucked solidly throughout the game.

Although the Island did not score, they held Warragul to one goal in the quarter.

But as the game progressed the Island's pressure started to drop away and Warragul hit the scoreboard numerous times.

Sadie Davie presented well up forward, while Phoenix Stedman and Jayla Loughridge gave constant efforts.

This was a tough game for the girls but set the standard for the Island to aim for next match.

Thanks to Justin Tilley for umpiring.

Final scores: Warragul 80 def Phillip Island 0.

Best players: Mia Ward, Ruby Kent-Ford, Gemma Fischer, Lily "Elbow" Bow, Jayla Loughridge, Sadie Davies and Phoenix Stedman.

For more photos, visit [pisra.com.au/sport](http://pisra.com.au/sport)



**Bendigo Bank**  
Community Bank  
San Remo, Cowes & Grantville  
Branches

**PROUD SPONSORS  
OF THE PANTHERS**  
Good luck to all teams for the 2025 season!



With 325 members, the club is fielding six football teams and looks forward to a successful season. Photo: Anna Carson.



The club's netballers can't wait to build on their finals appearance success from last season. Photo: Anna Carson.

# Bumper season for Kilcunda Bass

## FOOTBALL

The 2025 season is shaping up to be a big one for the Kilcunda Bass Football Netball Club.

After making it through to the finals last season, the club is looking to repeat and then go one better, aiming to win a final and beyond this year.

Vice President Kane Wookey said this year's membership is the highest it's been in recent times and they're looking forward to a successful season.

With 325 members, the club is fielding six football teams – Seniors and Reserves, as well as Under 16, 14, 12 and 10 teams.

"We've retained our entire Senior list from last year, while adding Brodie Connelly from South Belgrave, and Ned Bradley, who returns to the club after playing juniors with us," Kane said.

However, for the second year in a row, the club has been unable to field an Under 18 team.

"This puts pressure on the club to recruit heavily, until we can eventually field an 18s team, and develop them into senior footballers," Kane said.

"The pleasing thing is our junior grades are strong and competitive, and we hope to field an 18s in the near future."

Working alongside the teams is a squad of enthusiastic coaches, with Lee Rowe coaching Seniors and Scott Anderson the Reserves.

Under 16s are coached by Dan Leary and Ash Oats. Under 14s by Brent Wallace, while the Under 12s are coached by Nick Russo and Ben Leary.

Blair Lidstone is coaching the Under 10 team, with Nathan Milton in charge of Auskick.

Supporting the coaching staff are team managers Jaron Smith (Seniors), Daz Cartmel (Reserves), Kiani Eden (U16), Rina Derubis (U14), Mick Bennett (U12) and Chelsea Lidstone (U10).

Kane also thanked the dedicated volunteers at the club, who have helped ensure the teams got off to a flying start to the season.

"Special mentions to our gate keeper Rob Halley, Head Trainer Carol Evans, Seniors timekeeper John Lynch and of course our kitchen team of Shirley Eden, Jo Peacock, Sue Graham, Sheryl Turner and Kaye Churchill.

"Thanks also to the man responsible for Senior football operations, managing the bar, and a general all-rounder, Darryl Cartmel."

Kane said anyone interested in lending a hand should contact the club, as volunteers were always welcome.

Alongside Kane, the 2025 committee also includes President Shea Eden, Jess Parkes – Secretary, Darryl Cartmel – Senior Football Operations, Gemma Tschiderer – Senior Netball Operations, Sherryn O'Brien – Junior Netball Operations, Anna Carson – Social Media Operations and Photography and John Loughridge and Sarah Hadjialexiou – Junior Football Operations.

## Netball

The club is also experiencing a netball resurgence, with great numbers in the Net Set Go pro-



Caity Stephens – A Grade netball coach.

gram coached by Kim Pike, which started in April and will run all of Term 2.

The program is a great stepping stone for junior players coming up through the club.

With strong numbers in the junior teams, this year there is also an Under 13 and Under 15 Casey team playing midweek.

Head of Junior Netball Operations, Sherryn O'Brien said players and coaches were excited about the new season, from juniors through to A Grade, with many looking to play their 50 and 100 milestone games this season.

"The pre-season started back in November, and we have many familiar faces back but also some new faces which is fantastic for the growth of our club," Sherryn said.

"This season we welcome Emma Felsovary, Emily Andrew and Gypsi Schmidt to our A grade team along with our



Seniors coach Lee Rowe (right) with Assistant Coach Paul Carbis. Photo: Courtesy of South Gippsland Sentinel Times.

new Coach Leanne Smith, who provides a wealth of knowledge and experience.

"We can't wait to build on our finals appearance success from last season."

Junior netball coaches for this season include Jo Cartmel (U11), Courtney Shepherd (U13), Anna Carson (U13 Casey), Carly Bond (U15), Sherryn O'Brien (U15 Casey) and Chloe Kalis (U17).

The Senior coaching team is Kim Pike (D Grade), Caity Egan and Tamika De Nardis (C Grade), Gemma Tschiderer (B Grade) and A Grade Leanne Smith, assisted by Caity Stephens.

The club is focused on building confidence and skills in players, and fostering an inclusive environment.

"We love to see our junior

players playing in senior levels and really pushing themselves to their full potential," Sherryn said.

## Upgrades

At the end of the season, work will begin on a new \$2.2 million netball pavilion.

"This is well overdue," said Kane.

"Along with last year's upgrade of our canteen and football change rooms, this will see the club have some of the best facilities in the league."

Sherryn said netballers were "very excited about the new pavilion".

"It will be a fantastic inclusion for our club and we're very much looking forward to having new facilities for our members."

[www.kilcundabassfnc.com/](http://www.kilcundabassfnc.com/)

**BASS COAST  
BOAT & CARAVAN  
STORAGE**

**PROUD SPONSORS  
OF THE PANTHERS**  
Good luck to all teams for the 2025 season!



**Bendigo Bank**  
Community Bank  
San Remo, Cowes & Grantville  
Branches

**PROUD SPONSORS  
OF THE PANTHERS**  
*Good luck to all teams for the 2025 season!*

**WEST GIPPSLAND  
FOOTBALL NETBALL  
COMPETITION FIXTURE 2025**

**ROUND 5**

*Saturday, May 10*

Kilcunda Bass v Dalyston

**ROUND 6**

*Saturday, May 17*

Kilcunda Bass v Cora Lynn

**ROUND 7**

*Saturday, May 24*

Garfield v Kilcunda Bass

**ROUND 8**

*Saturday, May 31*

Kilcunda Bass v Koo Wee Rup

**ROUND 9**

*Saturday, June 7*

BYE

**ROUND 10**

*Saturday, June 14*

Kilcunda Bass v Tooradin Dalmore

**ROUND 11**

*Saturday, June 21*

Nar Nar Goon v Kilcunda Bass

**ROUND 12**

*Saturday, June 28*

Kilcunda Bass v Korumburra Bena

**ROUND 13**

*Saturday, July 5*

Dalyston v Kilcunda Bass

**ROUND 14**

*Saturday, July 12*

Kilcunda Bass v Inverloch Kongwak

**ROUND 15**

*Saturday, July 19*

Cora Lynn v Kilcunda Bass

**ROUND 16**

*Saturday, July 26*

Kilcunda Bass v Phillip Island

**ROUND 17**

*Saturday, August 2*

Koo Wee Rup v Kilcunda Bass

**ROUND 18**

*Saturday, August 9*

Warragul Industrials v Kilcunda Bass

**ROUND 19**

*Saturday, August 16*

BYE

**ROUND 20**

*Saturday, August 23*

Kilcunda Bass v Garfield

**FINALS**

*Saturday, August 30*

**ELIMINATION FINAL 1**

*Sunday, August 31*

**ELIMINATION FINAL 2**

*Saturday, September 6*

**SEMI FINALS**

*Sunday, September 7*

**SEMI FINALS**

*Saturday, September 13*

**PRELIMINARY FINALS**

*Saturday, September 20*

**GRAND FINAL**

**SOUTHERN GIPPSLAND  
JUNIOR FOOTBALL COMPETITION  
FIXTURE 2025**

**ROUND 3**

*Sunday 11th May (Mother's Day)*

Kilcunda Bass v Wonthaggi

**ROUND 4**

*Friday 16th May (Fright Night Lights/  
All Stars R2)*

Inverloch Kongwak v Kilcunda Bass

**ROUND 5**

*Sunday - 25th May*

Kilcunda Bass v Phillip Island Red

**ROUND 6**

*Sunday 1st June*

Kilcunda Bass v Phillip Island Blue

BYE - Sunday 8th June (All Stars R3)

**ROUND 7**

*Sunday 15th June*

Leongatha v Kilcunda Bass

**ROUND 8**

*Sunday 22nd June*

Korumburra Bena v Kilcunda Bass

**ROUND 9**

*Sunday 29th June*

Kilcunda Bass v Dalyston

**ROUND 10**

*Sunday 6th July*

Wonthaggi v Kilcunda Bass

BYE - Sunday 13th July

(All Stars Grand Final)

**ROUND 11**

*Sunday 20th July (TAC Round)*

Kilcunda Bass v Inverloch Kongwak

**ROUND 12**

*Sunday 27th July*

Phillip Island Red v Kilcunda Bass

**ROUND 13**

*Sunday 3rd August*

Phillip Island Blue v Kilcunda Bass

**ROUND 14**

*Sunday 10th August*

Kilcunda Bass v Leongatha

**FINALS**

**FINAL 1**

*Sunday 17th August*

**FINAL 2**

*Sunday 24th August*

**GRAND FINAL**

*Sunday 31st August*

  
**BASS COAST  
BOAT & CARAVAN  
STORAGE**

**PROUD SPONSORS  
OF THE PANTHERS**  
*Good luck to all teams for the 2025 season!*





Tommy Magnussen reaches for the ball during Kilcunda Bass' U10s clash against Dalyston.

# Kilcunda Bass juniors take on Dalyston in windy conditions

## FOOTBALL

### U14s

Under challenging conditions Dalyston got off to a quick start, kicking with the wind. The Kilcunda Bass boys did a great job scoring two goals in the first.

Across the second quarter the boys used the wind to their advantage, but inaccurate kicking saw Bass move into half time with a narrow lead.

Following on into the third, they held Dalyston to one goal.

Kicking with the wind in the last, Kilcunda Bass played with accuracy and walked away with a comfortable win.

Best players: Patrick Marks, Ryder Van Steensel, Noah Margrie, Nate Miller and Cruz Bettles.

### U12s

The Kilcunda Bass U12s took on Dalyston in windy conditions.

A tough contested three quarters saw Bass 2-3 and scoreless in the third, however dominated the final quarter, kicking 3-3 and keeping Dalyston at nil leading Kilcunda Bass to take the win by 34.

The forward line dominated with five goal contributors and a relentless backline.

Awards: Casper Hicks, Levi Fisher, Lerah Sconewille and Bailey Pool.

### U10s

Round 2 for the Kilcunda Bass U10s saw four kids playing their first game of the season which brought lots of excitement to the team.

With a very young and inexperienced side in tow, the team worked tirelessly against a strong Dalyston.

The team put in their best and took away lots to learn.

The fourth quarter proved a highlight with Cohen Effenberg kicking his first ever goal. Great effort Cohen.



Kilcunda Bass' U14 best on ground (from left): Patrick Marks, Ryder Van Steensel, Noah Margrie and Nate Miller.



A victory huddle for the U12s, celebrating their win against Dalyston.

# Results from the green

## GOLF

### Tuesday, April 29

#### Men's 18H Stableford

Overall winner: Mike Fitzmaurice (20) with 38 pts C/B.

A Grade winner: A-1 Darrell Clark (9) with 37 pts.

B Grade winner: B-1 Joel Panozzo (18) with 38 pts.

C Grade winner: C-1 Mike Fitzmaurice (20) with 38 pts C/B.

BDL: 31 pts C/B.

NTP: 5th Brent Scott, 7th Brendan Corvino, 10th Ugo Maschitelli and 17th Craig Morris.

#### Men's 9H Stableford

Winners: Rob Davison (15) with 21 pts C/B from Brian Baker (21) on 21 pts.

BDL: 16 pts.

### Wednesday, April 30

#### Women's 18H Foursomes Championship

Overall winners: Kym Cooper and Jillian Chandler with 73 pts C/B from Pamela Williams and Michell Pardoe on 73 pts.

BDL: 81 pts.

#### Women's 18H Stableford

Overall winner: Joan Nicholson (39) with 34 pts from Roz Morris (45) on 32 pts.

BDL: 28 pts C/B.

#### Women's 9H Stableford

Overall winner: Barbara Moloney (38) with 18 pts from Norma Corr (44) on 17 pts.

BDL: 14 pts C/B.

### Thursday, May 1

#### Open 18H Stableford

Overall winner: Steve Keily (26) with 39 pts.

A Grade winner: A-1 Neville

Thurgood (9) with 36 pts C/B.

B Grade winner: B-1 Ross Cooper (18) with 34 pts.

C Grade winner: C-1 Steve Keily (26) with 39 pts.

BDL: 31 pts C/B.

NTP: 5th Daniel Pearce, 7th Paul Cashman, 10th Tony Gay and 17th Brenton O'Brien.

#### Men's 9H Stableford

Winners: John Niven (26) with 24 pts from Don Thompson (25) on 19 pts C/B.

BDL: 17 pts C/B.

### Saturday, May 3

#### Men's 18H Stroke Monthly Medal

Overall winner: Mark Jamieson (12) with 66 pts.

A Grade winner: A-1 Mark Jamieson (12) with 66 pts.

B Grade winner: B-1 Harry Bentley (14) with 68 pts.

C Grade winner: C-1 Mark Dickson (28) with 71 pts.

BDL: 75 pts C/B.

NTP: 5th Phillip Ellard, 7th Greg Hyndman and 17th Ricky Males.

#### Women's 18H Stableford

Overall winner: Jeanette Diss (17) with 39 pts from Vicki Ramage (19) on 38 pts C/B.

BDL: 34 pts.

NTP: 5th Lesley Meadowcroft, 10th Jeanette Diss and 17th Susan Brown.

#### Men's 9H Stableford

Winner: Steve Rieger (25) with 18 pts from Len Fenton (23) on 17 pts.

BDL: 16 pts.

### Sunday, May 4

#### Open 18H Stableford

Winner: Ricky Males (12) with 40 pts from Ben Walsh (7) on 35 pts.

BDL: 32 pts.

# Weekend Red Rocks results

## GOLF

### Saturday, May 3

Monthly Medal – Stroke: 1st Ian Murray (20) 52 nett, 2nd Geoff Cohen (8) 57 nett C/B.

### Sunday, May 4

Multiplier Stableford: Winners Neil Malcolm (19) and Victor Petropoulos (18) with 105 pts.



Joseph Rizza Memorial winners (from left): Snow, Gareth, Paul, Shannon and Alby.

# Joseph Rizza memorial lights up Phillip Island

## DARTS

Thirty-five players packed the Phillip Island darts venue on Monday night for the annual Joseph Rizza Memorial Tournament, honouring a much-loved member of the local darts fraternity.

Eight teams squared off in a high-stakes round-robin showdown, playing 801 legs that celebrated the legacy of Joseph Rizza.

Emerging as the evening's stand-out performers was the powerhouse team featuring Snow, in blistering form, the ever-reliable Paul, the lethal Gareth; the steady Alby and the razor-sharp Shannon, notching up six wins from seven matches.

"This win means a lot to us," said

a smiling Snow after the final dart was thrown.

"To do it on a night like this, playing for Joseph's memory, it's something special."

Bones Cleeland, known for his dry wit and unwavering loyalty to the meat tray raffle, finally struck gold.

After weeks of tireless ticket-buying, the stars aligned and Bones walked away with the San Remo Butchers meat tray.

Still recovering from a wrist injury and relying on his bicycle for transport, Bones' journey home with a generous haul of premium cuts became instant folklore.

"There were a few wobbles, but the meat made it," Bones said.



# Impressive results for Breakers

## SOCCKER

### U14 Penguins

The weather was kind to the Island players at Inverloch for an exciting game of soccer.

The ball was up Inverloch's end for the first few minutes of the game but then the Breakers came through with a 6-0 win.

James scored a whopping four goals, while Georgia took the ball down the centre of the field and went all the way with a goal. After many crowd cheering attempts, Blake kicked a goal at the end.

With fantastic teamwork on the field and a defence line intercepting any attempt to score by Inverloch, the U14 Penguins walked away with a great win.

### U12A

The Island's U12A opened their season with an exciting 5-2 win over Inverloch.

Many forward attacking moves throughout the first half by the Island resulted in goals to Jobe, Lili and Flynn.

Inverloch never gave up and pushed hard in the second half resulting in two goals, before quick



The Island U12 Girls walked away with a great win over Inverloch on the weekend. From left: Coach Joss, Chelsea C, Taylah M, Aubrey S, Nkechi O, Gabby T, Lottie, B Layla M, Coach Jordan, Reagan W, Lily M, Olive M and Kelsey W.

thinking and fast moves by Eli and Mitch took the scoreboard to 5-2 just before the final whistle.

### U12 Girls

The U12 girls started their season with a thrilling win over Inverloch, showing incredible teamwork and determination.

Gabi was on fire up front, scoring four goals, with Nikechi adding another after a strong effort.

Chelsea was solid in goal keeping before moving forward to assist in the attack. The second half

kept everyone on edge, but Kelsey made some brilliant saves to hold the lead.

Lottie and Layla stood strong in defence, while Aubrey showed great accuracy and Olive impressed with her dribbling. Reagan worked hard to challenge every Inverloch move and Lily ran tirelessly to shut down attacks.

Special thanks to Taylah, who supported the team from the sidelines despite her injury. A fantastic all-round effort and a well-earned first win.

# Island women dominate Inverloch in season opener

## SOCCKER

The Phillip Island Women's Football team delivered a stunning performance in their first match of the season, beating Inverloch 11-0 in an away fixture.

The match, which kicked off the team's new season, showcased a brilliant display of skill, teamwork and individual talent.

The first half saw the Islanders take full control with a commanding 4-0 lead.

Early goals came from Kelly Wall, Luca Alford, Joss Geronimo and Helen Masters who also converted a penalty.

Wall's first goal set the tone for the game and the team's attacking drive was relentless.

Alford and Geronimo both had key moments and Masters capped off the first half with her penalty to ensure a commanding lead.

Coach Benita Russell, looking to keep the momentum flowing, made several changes during halftime.

In the second half she introduced some of the younger players to the front

line, giving them an opportunity to shine.

The changes proved to be effective as Joss Geronimo completed a sensational hat trick, further solidifying her role as one of the standout performers of the match and awarded players of the match.

The second half saw more brilliance from Wall who scored her second goal and Masters who netted her second, adding further pressure on Inverloch's defence.

However it was the fresh legs of the younger players that impressed with Tiki, coming off an U17s match, scoring two goals in quick succession.

In the middle Annie Dempsy and Evie also playing her second match of the day, controlled the middle effectively, dispensing ball to the forwards.

The backline performed exceptionally keeping the pressure off keeper Andrea Dempsy, returning to play the season with youngest daughter Annie.

Yar Baum and Niamh Moore played a pivotal role in pushing the ball back

into the Island's attacking half.

The icing on the cake came from Kellie Cox, who was playing her maiden match for the team.

Cox displayed her composure and vision by sending a perfectly timed cross that led to the 11th and final goal of the game, capping off an incredible team performance.

The 11-0 victory is a statement win for the Phillip Island Women's Football team and Coach Benita Russell's tactical decisions, including her ability to rotate players and give younger talent opportunities, were a key part of the victory.

The team will look to build on this dominant result as they prepare for their next challenge.

The win not only marks an exciting start to the season but also highlights the growing strength of the team, blending experience and fresh talent to perfection.

GSL results and fixtures at [pisra.com.au/sport](http://pisra.com.au/sport)



PIBC brought their 2024/25 season to a triumphant close over the weekend, with their fifth and final Aggregate event. Photo: Jo O'Reilly Stubbs (@joanna\_oreilly\_stubbs). More photos at [pisra.com.au/sport](http://pisra.com.au/sport)

# PIBC's Agg 5 comp wraps triumphant season

## SURFING

The Phillip Island Boardriders Club (PIBC) brought their 2024/25 season to a triumphant close on Saturday May 3, with their fifth and final Aggregate event.

Held in classic Cape Woolamai conditions, Agg 5 had over 100 entrants across multiple divisions, the event highlighted the depth and passion of the local surfing scene. From the groms to the veterans, competitors put on a display that reflected not only the skill on offer but also the strong grassroots culture that defines PIBC.

The event marked the end of a packed season for PIBC which also hosted Longboard and Supergroms competitions throughout the year.

Behind the scenes, the club's committee and an army of volunteers were key to the success of every event — a fact President Jake Eisen proudly acknowledged.

"What makes PIBC so special is the sense of community.

"Everyone pitches in, looks out for each other and makes it happen" said Eisen.

"It's about more than surfing, it's about belonging."

PIBC also extended its thanks to Phillip Island Nature Parks for their valued support in permits for all PIBC comps and the Supergroms program. PIBC look forward to working together closer in the future. Sponsors also played a pivotal role in supporting the club's efforts this season.

Local businesses provided the financial and logistical backing that allows PIBC to deliver such high-quality events for the local surfing community.

The club is encouraging the public to return the favour by supporting those sponsors listed on their website [www.pibc.com.au/sponsors](http://www.pibc.com.au/sponsors)

Looking ahead, the club has confirmed that its End of Year Presentation Night will be held on Saturday October 11, with further details to be announced closer to the date.

For those keen to stay connected with the club during the off-season, PIBC's popular yoga program continues year round while members will no doubt be spotted chasing waves around the island until the next season kicks off.

### Agg 5 results

**Cadet Females (U16):** 1st Scarlett Renie, 2nd Savannah Bennett, 3rd Phoenix



Victorious in the Junior Females category, Lilly Bassed. Photo: Jo O'Reilly Stubbs (@joanna\_oreilly\_stubbs).



Luke Archibald, winner of the Open Men's. Photo: Jo O'Reilly Stubbs (@joanna\_oreilly\_stubbs).

Stedman.

**Cadet Males (U16):** 1st Dusty James Rayner, 2nd Eddie Maier, 3rd Arch Rayner.

**Junior Females (U18):** 1st Lillian Bassed, 2nd Abbey Clarke, 3rd Evie Lutz.

**Junior Males (U18):** 1st Jarrah Cicero, 2nd Rye Cicero, 3rd Sunny Steiner.

**Senior Women's (35+):** 1st Zoe Adams, 2nd Dannielle Baylis, 3rd Emily Scott.

**Senior Men's (28-45):** 1st Adrian Maier, 2nd Ash Easton, 3rd Sam Fullarton.

**Masters (45-60):** 1st Adrian Maier, 2nd Matthew Ware, 3rd Peter Stephen.

**Legends (60+):** 1st Mal Gregson, 2nd Boots, 3rd Steve Turner.

### Awards

**Best tubes:** Sarah Sueren and Rye Cicero.  
**Best wipeout:** Eddie Maier.

# TIDE GUIDE

Tidal predictions for Stony Point, Cowes -0.09 Newhaven -0.31 | HIGH TIDE IS MARKED IN BLACK

WED 7 MAY	THU 8 MAY	FRI 9 MAY	SAT 10 MAY	SUN 11 MAY	MON 12 MAY	TUE 13 MAY
LOW 1:20 am 1.11 m	LOW 2:11 am 1.14 m	LOW 3:08 am 1.13 m	LOW 4:08 am 1.08 m	LOW 5:06 am 0.99 m	LOW 5:58 am 0.88 m	HIGH 12:43 am 2.44 m
HIGH 7:41 am 2.43 m	HIGH 8:45 am 2.35 m	HIGH 10:00 am 2.34 m	HIGH 11:13 am 2.43 m	HIGH 12:16 pm 2.58 m	HIGH 1:08 pm 2.75 m	LOW 6:43 am 0.77 m
LOW 1:23 pm 0.99 m	LOW 2:18 pm 1.18 m	LOW 3:27 pm 1.33 m	LOW 4:42 pm 1.40 m	LOW 5:52 pm 1.40 m	LOW 6:50 pm 1.36 m	HIGH 1:53 pm 2.91 m
HIGH 8:19 pm 2.63 m	HIGH 9:07 pm 2.52 m	HIGH 10:00 pm 2.44 m	HIGH 11:00 pm 2.40 m	HIGH 11:54 pm 2.41 m		LOW 7:37 pm 1.30 m

All material is supplied in good faith and is believed to be correct. No responsibility or liability for errors or omissions is accepted.



**PHILLIP ISLAND MARINE**

NEW & USED BOAT SALES

14 Beach Road, Rhyll  
OPEN 7 DAYS

PH: 5956 9238

[www.phillipislandmarine.com.au](http://www.phillipislandmarine.com.au)





Hugo Joyner, Kesani Gardner, Lachie Dallinger and Ruben Kimber of the U10 Blues.

# Island juniors work hard in Round 2 clashes

## FOOTBALL

### U10 Red

It was a beautiful morning for football in Korumburra as the Island U10 Reds took to the field, led by Captain Harvey E.

The team were set a task to work on shepherding, communication and decision-making.

With strong tackling throughout the match, the team will continue to hone their focus during play.

Awards: Leo for strong marking and excellent pressure all game, Will for attacking the ball hard in defence and sticking tight to his opponent, Ryden for a fantastic effort all around the ground and Harvey O for great tackling, chasing hard and giving consistent effort.

Well done Reds, keep working hard.

### U12 Red

The Phillip Island Bulldogs' U12 Red team took on Korumburra Bena across a beautiful Autumn Sunday morning.

The pups started off strong in the first quarter, with Ethan Cleary scoring four goals back-to-back.

Continuing to play well, the Red pups moved the ball with smooth and efficient effort, using great skill and teamwork.

Reading the field well, the team kept

their players ahead of the ball throughout the match.

The pups held the lead for the entire game and took a stellar win by 77 points.

Final scores: Phillip Island Red 14.08.92 def Korumburra Bena 02.03.15.

Goals: Taj Henzen, Billy Easton, Logan Regnier, Leith Cameron, Fletcher Hennesy, Alfie Trew, Thomas Grogan, Reef Elliot 1, Eddie Maier 2 and Ethan Cleary 4.

Awards: Ethan Cleary, Billy Easton, Izaac Naarden, Archer Paxton, Jasper Goodall and Leith Cameron.

### U14 Red

The U14 Reds travelled to Korumburra this week and were greeted with perfect conditions.

The ball was bounced and Bowie Edwards was straight back to getting in and under, winning the hard ball.

Goals came quick and fast for the Reds as Xavier Holmes asserted dominance early with two early goals.

Sonny Williams, Denver Preddice-Firth, Will Patton and Flynn Doig added a goal each to command a solid lead.

The team lost structure in the second quarter and took shots that should have been passed off to teammates in better positions.

Roy and Harvey Patterson hit every contest hard. Harvey was rewarded with

a goal for his efforts.

Zane Larsson continued his significant effort and was unstoppable around the ground.

Korumburra lifted their intensity in the third quarter and the Island's avenue to goal dried up.

Jeddah Richards, Denver Preddice-Firth and Xavier Holmes got the team back on track, each taking goals.

The last quarter was a better team effort with good handball receives and the boys running hard.

Xavier Homes took another two goals, launching his tally to five for the day.

Joining the party, Will Patton kicked his third, keeping goal umpire Joel Goodall busy. To end the game, Bowie Edwards took a goal on the siren.

Awards: Flynn Doig, Sonny Williams, Xavier Holmes and Will Patton.

Goals: Flynn Doig, Harvey Patterson and Jeddah Richards 1, Denver Preddice-Firth 2, Will Patton, Zane Larsson 3 and Xavier Holmes 5.

### U10 Blue

The U10 Blue Bulldogs started the game off with a rousing Captain's speech by Harper Dykes, who spoke about playing hard, celebrating with each other and having fun with your mates.

*Continued page 23*

**ALEX SCOTT  
AND STAFF**

Est.1886

**COWES OFFICE**  
**113a Thompson Ave**  
**5952 2633**

#### 10 ATLANTIS STREET, COWES



- Situated in the Whytesands Estate featuring 2.7m ceilings, 2 living areas, gourmet kitchen, butler's pantry, 12 jet spa bath & 8 camera CCTV system
- Bi-fold doors open onto alfresco area complete with privacy blinds, ceiling fan and grand outdoor pergola
- 4 bedrooms/2 bathrooms/2 car garage

#### 3 PINNACLE WAY, COWES



- Situated in the Shearwater Estate, with close access to the Golf Club, Primary Schools, shops & restaurants
- Modern hostess kitchen, stone bench tops, undercover alfresco area, light & bright open plan living
- 4 bedrooms/2 bathrooms/2 car garage

#### 1/35 STEELE STREET, COWES



- Exquisite modern masterpiece with attention to detail and high-end finishes located less than 500 metres to the beach and vibrant main street
- Features: gas log heater, double Fisher & Paykel ovens, induction cook-top, marble benchtops, butler's pantry, two living areas, expansive rear deck with outdoor kitchen, spacious double garage and established gardens
- 4 bedrooms/2 bathrooms

**SAN REMO OFFICE**  
**127a Marine Parade**  
**5678 5408**

#### 17 WONTHAGGI CRESCENT, SAN REMO



- Expansive 4-bedroom, 3-bathroom coastal retreat sits privately in a peaceful cul-de-sac
- Includes 2 living zones, games room and study, situated on a 779m<sup>2</sup> (approx.) allotment
- Short walk to swimming beach and playground

#### 69 PENNIWELLS DRIVE, SAN REMO



- Stunning water views, versatile design with multiple living zones
- Situated on a 522m<sup>2</sup> (approx.) block that is walking distance to the beach
- 4 bedrooms, 2 bathrooms, double carport

**\$1,050,000 TO \$1,100,000**

[www.alexscott.com.au](http://www.alexscott.com.au)

HOME DELIVERY  
Call your local  
newsagency

ISSN 2200-100X



9 772200 100002

PHILLIP ISLAND & SAN REMO

**ADVERTISER**